



Campaign for Childcare



Story: Lisa Swift | Photos: Erin Blythe

Parents, childcare workers and children took to the streets on December 12th and January 19th, to let the Council know that cuts to Early Years funding is not acceptable.

Burngreave and Fir Vale families were a key part of the protest. Voluntary sector providers Watoto, Fir Vale Pre School and Ellesmere Children's Centre all depend on Council grants that will be entirely cut. While childcare at Burngreave Children's Centre is run directly by the Council, the Council plans to privatise this.

January's demonstration was organised by Sheffield Community Childcare Forum. Speaking on the Town Hall steps to hundreds of protesters, Abtissam Mohammed, representing Fir Vale Pre School, said,

"We were told that the most vulnerable deprived communities would not be affected. By cutting all these Children's Centres and childcare, which are in the most deprived areas in Sheffield, we are targeting the most vulnerable communities."

"The Childcare Forum will be challenging these cuts legally on 2 grounds: the

decision was taken without proper consultation. And no account was taken of the equality duty – many women will be impacted because of these cuts. Many children with special needs, many children from BME backgrounds are going to be specifically affected."

The Messenger spoke to parents and workers who would be affected by the cuts. Lena Mohammed, worker at Fir Vale Pre School, explained what the cuts might mean for their centre,

"We won't be able to employ enough staff and we'll have to downsize. That would be ridiculous because in our area there's a population increase and we need more childcare. We are a multicultural centre with a multicultural staff."

Burngreave mum Charlie, who uses Ellesmere Children's Centre, said,

"I feel like the government is attacking working class women. I want to be able to afford to go to work. They're taking that right away from me."

Nusrat Begum takes her children to Watoto Pre-School. She said,

"I have to look after three children with disabilities. If it wasn't for Watoto, I wouldn't be able to get anything done at home. I think it would make me ill."

Watoto manager Sharon Brown explained,

"Early years and childcare services are crucial to helping our children develop their linguistic, cognitive, social and emotional building blocks in readiness for school and life. We at Watoto Pre-School believe that slashing the early years funding so drastically is unwise and will cost the city and the country in the long term."

Semereab Tesfazghi, a father whose family has used Burngreave Children's Centre for years expressed his concern,

"We have twins who are 4 years old now. Burngreave Children's Centre have supported us since before they were born. There are a lot of facilities there, health checks, midwives, my partner has been to a lot of activities and got help with things like breastfeeding. It's an important part of our community."

A local mother of two from Firs Hill, who takes her baby to Owler Brook Nursery, said,

"The impact will be women becoming more isolated, staying in, getting depressed. This is the contact you have with the outside world. It's part of the community and you get to know what's going on around you."

Parents are beginning to see some action as a result of their protests and the 9000 signatures they have gathered on a petition. The Council's Scrutiny Panel has now referred the matter back to Cabinet and asked them to preserve the current services until the matter is reconsidered.



Green City Action

Telephone: (0114) 244 0353
enquiries@greencityaction.org.uk

Green City Action has a vacancy for the post of:

School for Vegetables Project Assistant

Local Food

Salary: £10 per hour plus 5% pension contribution.

This post is part-time and flexible at 10 hours per week (520 hours per year) and is a 1 year contract.

Purpose of job:

To support the School for Vegetables (SfV) project by assisting with school site visits to a community allotment, horticultural sessions and general organic gardening.

Applicants must have experience of sustainable food growing and working with children.

For an application pack please contact Green City Action on email at enquiries@greencityaction.org.uk or by phone on 0114 244 0353

The closing date for applications is Monday 25th February at 5pm



LOTTERY FUNDED

www.greencityaction.org.uk. Registered Charity 1095725

ST JAMES PARENTS & TODDLERS

We are open to everyone: mums, dads, caregivers, childminders and grandparents. We have a large variety of toys for children aged 0 to 3 years.

**Tuesdays and Thursdays 9am–11am
£1.50 per session**

St. James' Church, Scott Road, Pitsmoor, S4 7BG
www.stjamesplaygroup.com
info@stjamesplaygroup.com



**Lively worship • Growth groups
Youth group • Children's activities
Bible-based teaching**

Join us Sundays for worship at 10:30 a.m.
Just off Spital Hill at 75 Carlisle Street
Phone: 0114 2767630
www.rockchristiancentre.org



**Pitsmoor
Citizens Advice
the charity for
your community**

**Annual General Meeting
Wednesday 20th February 2013
3.30pm – 5.00pm**

**Ellesmere Suite, Sorby House,
Spital Hill, S4 7LG**

**Guest Speaker: Professor Alan Walker
(Chair of the Fairness Commission)**

Those of you who know us, know that we try our best to help people with a wide range of problems. These often involve benefit and debt problems.

Come to this meeting and hear more about us, give us your ideas about how we can improve and perhaps you can consider joining us and helping your local community!

We are very pleased to have Professor Walker as our speaker this year as after many years of work researching the causes and effect of poverty he has an informed insight into the huge differences in wealth and health in our city.

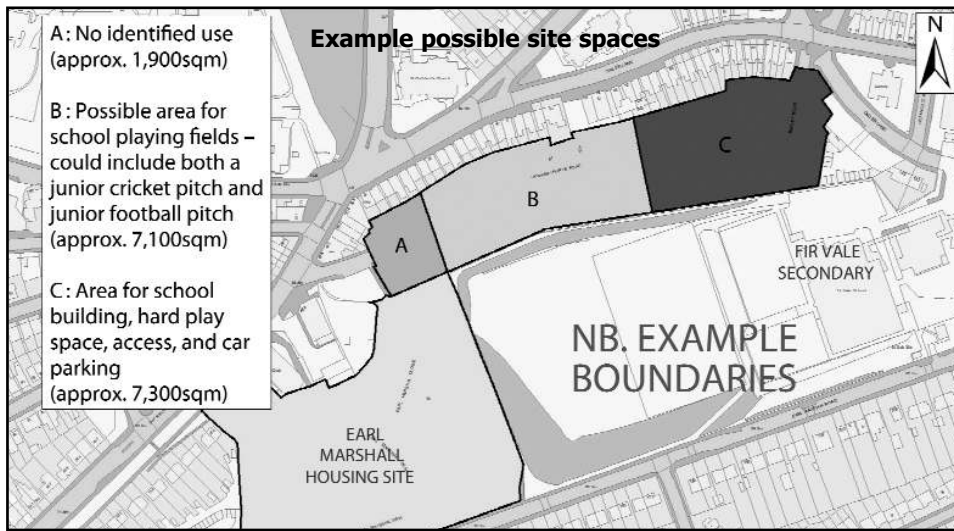
We have an informed insight into the changes that are coming to the benefits system and we want to use this opportunity to let people know what is coming and help the debate about the fairness of it all.

Come and join in. All welcome!



If you would like a copy of our Annual Report and/or would like to know more about Pitsmoor Citizens Advice Bureau or the AGM, please get in touch with Chris Walker

0114 275 5376
c.walker@pitsmoorcab.org.uk



Fir Vale Primary Academy update

Story: Rohan Francis

More information about the proposed Primary Academy School in Fir Vale was revealed by the Council at community meetings in December.

Primary Places

From its opening in September 2014, the school will offer 60 Reception places, with 30 places in years one, two, three and four and 15 places in years five and six. The school will eventually provide 60 places per year across all seven year groups – a total of 420 places.

Members of the Council's Inclusion and Learning Service told the Messenger they anticipated the extra school places will be taken up by local families due to the increased birth rate. There is also a demand for primary school places across the older age ranges in Fir Vale. These children are expected to fill the places offered in years one to six.

This differs from the situation in the proposed new school at Shirecliffe, where the school will be launched with just two reception forms of 30 places each in its first year. The size of the school will grow to 60 places per year across the primary age range as the first group of children flow through it.

New location plan

The Council also revealed an updated plan of the site for the school, on the Skinnerthorpe and Bagley Road area. This plan shows the area of land that could be taken up by the new building, outdoor areas and playing fields, based on the requirements of a typical primary school. It could be adjusted in response to local wishes.

Council staff at the drop-in said they were

listening to all comments about the school. They told the Messenger these comments could influence the final details of the project, suggesting that views on traffic problems, access to outdoor spaces or how the Academy is run, would all be taken into account.

Other regeneration?

The plan shows a small area remaining on the site, which has yet to be designated a use. It is proposed that the development of this area will be decided through community consultation later.

Local comments

Residents' comments on how the Academy should be run were collected at local Libraries, the Pakistan Advice and Community Association and from parents of local schools.

The Council will consider the expressions of interest in running the Academy they had received by the 21st January, combined with the comments, and form a 'Preferred Option'. This will then be forwarded to the Secretary of State who will make the final decision on who runs the school around the end of March. Once this decision is made, there will be a separate opportunity for residents to comment on the planning application for the building.

More information

More information on the new Academy Primaries can be found on the Council's website. A report on the community discussions and details of which organisations have expressed an interest in running the schools will be posted at the same website soon:

www.sheffield.gov.uk/education/about-us/consultation/new-primary-schools.html

Burngreave hit hardest

Putting this issue together has been a grim task as we survey the impending cuts to services in Burngreave in the Council's budget.

Faced with £50 million less to spend than last year, the Council has a difficult and unpleasant task. Having less money inevitably means people in Burngreave will be badly affected.

But Councillors need to bear in mind the population of Burngreave is also facing bigger-than-average cuts in non-Council services, including the severe cuts to benefits and Council tax rebates that so many people rely on. Whilst Councillors may be eager not to raise Council tax for wealthier homeowners across the city, they should remember who is really having to pay the cost of the cuts.

Messenger Info

Copy deadline: **6th March**

Published: **23rd March**

Burngreave Messenger Ltd,
Abbeyfield Park House,
Abbeyfield Road, Sheffield S4 7AT.

Tel: (0114) 242 0564

mail@burngreavemessenger.org

www.burngreavemessenger.org



LOTTERY FUNDED

The Burngreave Messenger is a community newspaper with editorial independence, funded by the Big Lottery, the Tudor Trust, local residents and our advertisers. Registered Charity: 1130836

All content is copyright Burngreave Messenger Ltd or its voluntary contributors, not to be reproduced without permission. We aim to increase and encourage communication in Burngreave. Each edition is put together by an editorial team who write articles not otherwise credited.

This issue's team: Rohan Francis, Carol Holmes, Saleema Imam, Douglas Johnson, Jamie Marriott, John Mellor, Tim Neal, Lisa Swift

Proofing and editing: Fran Belbin, Gaynor Carr, Liz Searle.

Study support campaign continues

Story: Lisa Swift, Emily Haimeed, Nasira Amin, Asha Mohammed



Local parents and study support organisations have been campaigning to prevent Burngreave's four study support projects from coming to an end.

Their current funding comes to an end in March. A massively reduced service may continue until July. After that the projects have no funding in place. Children have written letters and parents have started a petition in the hope of saving the provision. Residents attended Full Council to express their concerns. Addressing the Councillors, Miriam Yafai, a young worker with Burngreave After School Study Support, said:

“Study Support is really important for young people from disadvantaged backgrounds, and that includes my sister who couldn't read after being in a mainstream school. She learned to read at Study Support. You are cutting things for the future generations. I'm asking you not to make these cuts.”

Data shows children in study support did better than predicted in their GCSE, increasing the number of local children who gain 5 GCSEs A-C. However it has been difficult to convince schools to invest money. The support groups and local parents met with David Blunkett MP in January to discuss the issue, who said:

“I can feel the passion and commitment in the room, and the huge importance this has for you. However I can't pretend I can solve this problem. I know you are working with schools, who are themselves struggling for money. I will support you to talk to them. Perhaps we can indentify a range of different funding for the projects. These are very hard times, but good times will come again.”

Education is an investment

Diana Yehya Shaibi works at Byron Wood School supporting children with maths and literacy.

I am a proud, Yemeni-British citizen living in Burngreave. I graduated from Sheffield Hallam University in November, studying BA Education Psychology.

I attended the Burngreave After School Support Project whilst I was a student at Fir Vale School. The after school project encouraged me to work hard and motivated me to succeed in anything I wanted to do. The project had fantastic teachers and mentors that pushed us that little bit extra in helping us in exam preparations and coursework. It also helped me gain confidence in myself to stretch my potential. The project had a great social atmosphere which made it a happy and safe place to be. Staff at the project made it clear that education leads you into your desired profession and is the key to life's challenges.

I strongly believe education is like an investment that gains interest over time, and I will definitely reap the benefits. I am hoping to return to university to undertake a post graduate degree in teaching.

Supporting younger children

Asha Mohammed volunteers at Somali Education Breakthrough and is doing well at school.

I am 12 years old, I go to Parkwood Academy. I went to Somali Homework Club because I was very weak in my English and maths and by attending twice a week, I have improved so much. I am now one of the top students in some of my subjects, I have a lot of confidence to study on my own, I am very much focused in meeting my targets and I get positive feedback from my tutor. My mother suggested that I volunteer to help out younger kids. I thought it was a good idea to help those children including my little 8 year old brother Sami.

These children have got a chance to improve like I did and for the club to give them so much one to one attention that they need. It would be a shame to close it down. What will those kids do?



Springboard into University

Mohammed Ali (pictured right) is in his 3rd year of Bio Medical Science at Sheffield Hallam University

I attended ITCSSS Study Support from year 6 until year 10. I was new to the country. Many Somalis had come from different parts of Europe and we needed help with basic skills, especially with English. We were behind in school, Study Support gave us the environment where we felt comfortable, as we didn't feel like the brightest students at the time. We got one to one support, there was a good work ethic and we were working with older students as well; that helped us get ready for secondary school. It was a huge spring board, now I'm doing a degree and I would like to teach science, hopefully in a secondary school. When I was in Year 10, I helped teach at Study Support and this was definitely an inspiration for me.

Inspired to study dentistry



Sadaf is a volunteer at Reach High 2, and is a 4th year Dentistry student at Sheffield University.

I attended Reach High Study Support Project to improve my school grades and get that extra help in the areas I was finding difficult at school. When I was deciding what I wanted to do at University, Reach High held a “careers day”. There was a Dental workshop held by the Science Teaching Assistant, called Shazia, who was also a Dental student. This inspired me into Dentistry. Shazia was a great role model, she was able to answer my questions and guided me on what subjects and grades I required. After my GCSEs, Shazia and Reach High continued to be a great support. I was given help with my personal statement, University applications and interviews. Reach High was a huge factor in getting where I am today.



Budget cuts

The Council has begun releasing details of its budget cuts for April onwards. After two years of Government cuts, the coming financial year will see even bigger changes to services funded through the Council, which has £50 million less to spend this year.

The Council will make more decisions in February as it prepares to set its formal budget on 1st March. The impact on Burngreave will be huge and the nature of the services being cut means Burngreave can expect to be harder hit than many other areas of the city.

Young people and families

As can be seen, the biggest part of the cuts affects young people in particular. The very successful Study Support schemes and the Adventure Playground face closure and Verdon Recreation Centre will no longer have any staff based there.

There will be a further blow to young people with the end of 'Kids Can Do' funding, which paid for additional activities in the area. Burngreave will lose just under £50,000. The end of some Government funding for gang prevention will probably result in the loss of the Vestry Hall project, which currently supports young men to improve their lives.

Families face extra hardship with the Council decision to cut early years services and libraries.

Community groups and advice

The cuts to community assemblies will include the loss of many small projects funded by their "discretionary budget." Voluntary organisations will be affected by a 7.5% cut to the Grant Aid budget. The cut will not be evenly spread, as some projects will be cut more than others. In Burngreave, advice services, currently provided by Pitsmoor CAB, Yemeni Community Association and Pakistan Advice and Community Association will be affected. There are additional cuts to advice work resources in the Early Years Services.

It's unlikely that any group or service in Burngreave will be left unaffected by these cuts. In fact, some provision that has taken decades to develop will be swept away overnight from the 1st April. The consequences will be very grave for our area.

Community

Assemblies axed

Story: Rachael Pearson

Sheffield Council has been consulting on axing community assemblies to slash spending.

The current council budget of £1.6 million for local projects will reduce to £300,000 citywide. As well as public meetings, the Community Assembly has a budget for small amounts of funding that make a difference. These have helped the festivals, the Messenger, the youth, health and adult learning networks, and groups that do Tae Kwon Do, football, crafts and dance.

Funding has helped the Girl Guides, activities for children and young people, carers and tenants associations.



Future of Forum House

Story: Douglas Johnson

Forum House is being brought back into use – with a Council grant.

The building is on a prime site, on Spital Hill next to the ring road and with a large car parking space. It used to be occupied by the Black Community Forum, who

Saleema Imam, who regularly attends the meetings, said,

"Decisions will be made, without consultation with Burngreave community members, by council officials who often have no grassroots information whatsoever about the area. The old stereotypes about the area and its community will dictate its future."

Councillors plan to have ward based support so elected members can still work with community groups and residents.

Tim Neal, who helps run the Friends of Abbeyfield Park, said,

"My concern is that some sort of public forum for Council decisions to be made accountable is needed."

The consultation ran until 28th January 2013. For more information, call 273 6751 or visit www.sheffield.gov.uk/northeast.

refurbished the building after winning European funding, and then later by the Burngreave Community Learning Campaign. It has been empty since the Council took over the management of the former New Deal buildings.

The Council has now agreed to lease the building to Hamilton College, a London-based training business, for ten years. Councillors will also spend £100,000 on a small programme of works before the new business moves in.

The Council should get a regular rent and it will bring the building back into use. However, at a time of cuts, the Messenger asked why the Council didn't negotiate a rent-free period so the Council didn't have to spend a large sum in advance, a common arrangement for commercial leases. The College made over £1 million profit in their last accounts.

A Council spokesperson said "This rental will save the Council around £550,000 over the 10 years as a result of the rent and cost savings."

Benefits cuts

Benefits will be changing in April due to government cuts. This could affect the Housing Benefit you are entitled to and you may have to pay some Council Tax.

In Burngreave there are 739 working age tenants living in Sheffield City Council properties that are claiming housing and council benefit, 501 are likely to be affected by the welfare

benefit reforms. Over 150 of these will be affected by the 'Bedroom tax'.

Burngreave Tenants and Residents Association have organised an event with Sheffield Homes where you can find out more about how it will affect you.

TARA Benefits Cuts Advice session: Friday, 8th February, 11.30am - 1.00pm at Burngreave Vestry Hall

Cuts to Libraries

The Council is proposing that 14 of the city's 27 community libraries are to close.

The Council is calling on organisations to come forward to manage them. No details have been released about which libraries are to close but Burngreave is

particularly at risk as one of the smaller libraries. In the recent Libraries review, local residents said computer and internet access in libraries is important.

Burngreave Library

Story & photos: John Mellor

Burngreave Library could be under threat of closure under Council budget plans. Regular users of the library and its members of staff believe this would be a critical loss for Burngreave.

Janet and Mary, long-time staff members, told the Messenger that many people in the community depend on the library for essential services. They said,

"Many people are referred to us from the Citizens' Advice Bureau and Sheffield Homes to use the computers to download information and official forms. They need this to make applications for government and council services. Without this facility, many local people would come up against a brick wall. The library is popular with children from Pye Bank School, who visit regularly and do not have to face the hazard of crossing a busy main road to reach us, as would be the case if the library was transferred to Sorby House."

Several of the people using the library said it would be greatly missed if it closed down. Judith said,

"I enjoy the friendly and relaxed atmosphere in the library, as does my daughter-in-law when she works occasional shifts here."

Saleban brings his children to the morning nursery at Pye Bank and uses the library while he waits for them. He told me,

"I am currently studying for an international GCSE qualification on a distance learning course with Oxford Open Learning. Burngreave Library is an ideal and quiet place for me to pursue my studies whilst waiting to collect my children."



Another student, Katje, studying at City College, said the printing facilities were very important for her course work. Margaret, a volunteer with the Burngreave TARA, said,

"I find the library a great place to borrow books and also obtain DVDs for my grandchildren. I always find that the staff create a friendly and welcoming atmosphere, always willing to 'go the extra mile' in giving help to people who need it."

Clearly, Burngreave Library is a very important and essential resource for the large number of local people who use its services. It would be a tragedy for the community of Burngreave to see it close.

Six Book Challenge

Fancy a challenge? Join the Six Book Challenge at any Sheffield library and read six books before the end of May.

Any book counts: short, long, books you read with your children. Not read a book since school? New to English? Why not give it a go! For details contact Sue Taylor at Burngreave Library 203 9002.



Firth Park Library

Story: Carol Holmes | Photos: Rohan Francis

Firth Park library is a modern, friendly place offering activities and services for the public and businesses to use. It is a very busy library, with multi-cultural users from small babies to the over 65's.

It is an important service to the area, as many elderly people who are isolated meet there and have a chat with similar people, making a difference to their lives.

As well as books, CDs and DVDs are available to all users for small fees. The latest novels can be reserved. The computers are an essential service, proving very popular with all ages. The staff always give an excellent service,

never without a smile, creating a friendly atmosphere and getting to know the people who use the library facilities.

Regular user, Frances Bedford, said it is a nice library with friendly and helpful staff. She added

"The library is accessible for my wheelchair. There is a good selection of books to read. I would like to use the computers but it is busy at most times."

Here are some activities the library offers:

- Coffee morning/bring and buy: Every Friday morning, 10-12 am, raising money for charities
- Baby Time for the under 3s: with action rhymes, songs and play. First Monday of the month, 10-11am
- Credit Union: New to the area, held every Wednesday, 10-11am

- Computer classes for beginners: held every Friday, 1-3pm
- Chatterbooks: for ages 7 plus. First Tuesday of the month, 3.45-5pm
- Holiday activities for children: Reading Challenge in the summer
- Visiting museum staff doing children's activities and Off the Shelf: authors' visits
- 2 rooms for hire: costs £5 per hour
- Sheffield Homes desk
- Books, computer access, DVDs, CDs, photocopying and faxing services
- For children who do homework on library computers: 5 copies of black and white photocopying

For more information about what the library offers, contact 203 7433.



"We've been using the centre for about 20 years. We used to work at Stanley Tools on Rutland Road which is gone now but we still come here. We think it's important to have staff based here to make sure the centre is maintained properly. We've had keys in the past but, if something happens while you're here, you end up having to deal with it."
Dave Broadhead, Stanley Tools group

"It needs someone to be here to support the community. Why is it always the things that work that come to an end? We need a worker here, the centre is very well used. This centre represents Burngreave. If you want to see community cohesion in action, here it is."
Fatima Musa, local resident and community worker

"All the women here would never come out of their homes if it wasn't for our group. They do exercise, they relax, they have a social life. We really enjoy it here and the staff are very good, they are very friendly and they support us a lot."
Aamina Xassan, Mothers of Burngreave

The Council says it will still make Verdon Recreation Centre available for hire.

Friends of Verdon Recreation Centre will be holding a meeting on **2nd February, 4pm at Verdon Recreation Centre.**

Bowling greens

Photo: Saleema Imam

Local bowling clubs will have to pay for the maintenance of their greens from April this year.

The Council is offering a standard grant which will not cover all the costs, and players are still uncertain about what the impact of the changes will be.

Bowling clubs have been offered a choice of using their grant to pay the Council's green keepers or go for a private contractor. Our local bowling team at Abbeyfield will go with the Council.

While the grant will cover the grass cutting, other maintenance such as weeding and feeding will not be covered. The Council will allow clubs to keep fees collected from members to help pay for this, but this will unfairly affect small clubs who have less members to raise the money from and could mean an increase in fees for some.



Verdon Rec to lose all staff

Story: Lisa Swift

Under Council budget proposals, Verdon Recreation Centre will lose all its staff from April.

Less than a year ago, local residents expressed their anger at staff changes at the centre. Residents felt that relationships built between the local community and regular Activity Sheffield staff were an important part of the success of the centre and the surrounding neighbourhood. Meetings with councillors and managers saw changes to proposals.

Now the Council proposes a complete cut of any staff support. Users of the Centre told the Messenger what this would mean:



Council proposes Playground closure

Story: Lisa Swift

The Council is proposing to close Pitsmoor Adventure Playground as part of its budget cuts from April.

Activity Sheffield, which runs the playground, proposes that the playground becomes an open park with no staff support. The building would be closed unless rented out by other groups.

The Playground has been part of Pitsmoor life for over 30 years, and has faced cuts and closure many times before. Local residents have always sprung to its defence because they know the difference that it makes to children's lives to have a safe, adventurous place to be. On hearing the proposals local parents and residents expressed their concern ...

"The playground is somewhere safe where both my children can play, can get exercise and take physical risks appropriately with supervision. Here children are supported and encouraged to play together. My son is only 2, but older children will play really well with him, this is because of the influence of the staff. A lot of kids around here need good role models and that's what they get here." Chris Taylor, local parent

"This short-sighted closure will lead to hundreds of thousands of pounds being spent on putting right issues that the Playground currently prevents." John Errington, local resident

"The playground provides opportunities for children to mix. It's seen as a safe place to come. And with so many new people coming to the area, it's fantastic that this place has been here all this time. It will be really missed if it goes."
Steve Pool, local resident and builder of the playground's castle

"Pitsmoor Adventure Playground is a vital resource, not just for children in Burngreave but the surrounding area, and is a lifeline for many families. Although we've got to face up to disproportionate cuts nationally, it's important that we stand together side by side and prioritise what's important in Sheffield. I'd urge people to save this vital resource for children from a range of diverse backgrounds. Some of the most vulnerable families in Sheffield use this service." Patrick Meleady, former playground manager.

Pitsmoor Adventure Playground have begun a campaign to save the playground and hope they can talk to the Council about how to keep the playground going in the future.

To find out more, or to join the campaign, contact Chris Taylor on 07903 453 006 or see www.burngreavemessenger.org/community/adventure-playground/

Scouts Community Challenge

Story: 76th Sheffield Scouts | Photo: Jim Gilbert

On the 3rd of January, 76th Scouts decided to help the community. Lots of Scouts attended a litter picking event as part of trying to earn their Community Challenge Badge where Scouts have to do community service and find out about some aspect of their local community.

There were many participants who helped on the day such as Samier, Kael, Javien, Jacob, George, Dayne and organisations like Carwood TARA and Sheffield Homes. They were based around the area of Carwood and near the Cornerstone Scout Hut at the top of Carwood Road. As Ingrid Gillson said, "It looked a lot better afterwards, and it motivated me to do more litter picking. It also gave us a real sense of achievement."

Most of the scouts did the litter picking because they live in the area and thought it was a disgraceful mess and so they could help the community but some did it so they could get a community challenge badge. They have also done a number of activities like bulb planting and coming to see the Burngreave Messenger. They had to do six hours of litter picking to get the badge.

Scout to Explorer

Young Leader Eden has been in scouting for just over 11 years. Since he started with Beavers aged 6, he now is an Explorer and Young leader helping run the scout nights. He was the first Scout from 76th to earn the Chief Scout's Gold award and has been abroad to an international camp in Switzerland. He said the best bit about scouting is going on camps and learning new skills, for example map reading and bush craft skills.



Explorer to Leader

Scout Leader Nathan has been in scouting for 8 years since he started in Scouts at age 10. He was the first scout from 76th to go to Explorers and has since moved on to Net-work. He is now an assistant Scout Leader. He remembers the best bit about Scouting (as well as camping and learning new skills) was completing the Bronze Duke of Edinburgh award. He wants to make Scouting better and more enjoyable for future Scouts. He enjoys running his 'Bush Tucker Trials' for the Scouts where they are challenged to eat obnoxious food combinations, for example flapjack and gravy or olives and rice pudding, all who tried it thought it great fun, but disgusting!

Group Information

Scout nights happen every Friday 7:30-9:30pm and cost £1 per night, but the first night is free. For more information you can contact Scouts via 76thsheffieldscouts@googlemail.com

Litter complaints

Story: Lisa Swift | Photo: Mathew Rajan

Following concerns raised in the last issue of the Messenger about the high levels of litter and dumping in Burngreave and Fir Vale, residents contacted the Messenger to tell us about their experiences.

An Earl Marshal Road resident told us "The grassed area where the flats used to be is a mess. There are rats and all sorts. And along the school fence there is a lot of litter that just gets thrown over. We report these problems but it just doesn't get sorted."

Dave Woodall from Page Hall explained how he had reported rubbish on his street but it hadn't been picked up. "I reported it to Streets Ahead and they sent me an email back saying it was done, but the rubbish was still there. They had cleaned the wrong street! I had to report it again."

A Burngreave resident had a similar experience: rubbish was reported, Streets Ahead said it was cleared, but the rubbish was still there. It took three phone calls and an email to resolve the issue.



Another resident of Page Hall, Mathew Rajan, explained that the problem was ongoing. "I reported the problem on my street and I received an email saying the cleaning had been done and the request was 'closed' but this was completely false. I took photos and sent them to Streets Ahead. When they came, I went out to make sure it was done. There is litter here all the time. People hang around and eat fast food and leave it a mess."

The Messenger asked Amey, who run the Streets Ahead service, why residents were having to report problems more than

once and if there were plans to increase street cleaning where there were recurring problems.

Cllr Jack Scott, Sheffield City Council's Cabinet Member for Environment, Recycling and Street Scene, said:

"We are very aware of the issues with litter in the Burngreave and Fir Vale area and we are working closely with Amey to overcome them.

"Unfortunately we have found that, on occasions, no sooner have our teams cleared the areas of litter, then more litter is immediately put on the streets. We are therefore considering a range of options to tackle this problem, including additional bins, working more with the community, education and enforcement.

"I am also working very closely with Cllr Ibrar Hussain, my Cabinet Assistant, on this issue. Ibrar is working with litter enforcement officers, Amey and local community workers to develop a strategy for tackling some of the wider social and community issues that are at the heart of this issue."

If you need to report litter or dumping contact Street Ahead on 273 4567 or email streetsahead@sheffield.gov.uk



Parkwood Academy awards

Parkwood Academy's celebration of a year of achievement and success was the finest ever.

Thursday 17th January saw over 300 guests attending the annual awards evening, including past and present students, staff, Governors and visitors. The evening was to present last year's GCSE students with their certificates and to award prizes to students at the school.

Adar Ali, a former Parkwood student who now has a First Class degree from Sheffield Hallam University, was a guest speaker. In a short and inspiring speech, she described her climb up the 'ladder of success.' She commended Parkwood staff for being 'supportive and dedicated'.

The guest of honour was Professor Paul White, the Pro Vice Chancellor of the University of Sheffield. He gave an entertaining and encouraging speech about his passion for learning despite confessing to being not very good at school, whether with lessons or sports or with the opposite sex.

Hasan Baki, who received an award for exceptional progress, was so inspired by the Professor's speech that he made an announcement to all the guests giving, "a special thanks to all the staff but especially to Mr Reed for inspiring me and pushing me on."

Parkwood students put on entertainment with performances of drumming, the ukulele group and the choir. Student Leaders, Ambassadors, House Captains and the Parent Forum received commendations for their contribution to the Academy. Feedback from parents was exceptionally positive. "Hats off to Parkwood, keep it up," said one. Another commented, "The whole evening was a very successful event – well done to all involved".

Parkwood wins design award

Image: HLM Architects

Parkwood Academy picked up a Commendation in the Community Design category of the 2012 Sheffield Design Awards.



The Awards, announced at a special ceremony on the 27th November at the Showroom Cinema, are presented every other year to the City's best architectural projects. Parkwood's designers, HLM Architects, picked up the award alongside two others on the night – the Conservation Award and the People's Choice Award, both in recognition of their work on Sheffield University's Arts Tower.

Half Term Activities

Saturday 16th – Sunday 24th February

All activities are FREE unless otherwise stated

Earl Marshall Youth Centre

Monday 2-4pm [18] February (8-12 years)
 Monday 6-8pm [18] February (13-19 years)
 Wednesday 6-8pm [20] February (13-19 years)
 Thursday 2-4pm [21] February (13-19 years)
 Thursday 6-8pm [21] February (8-12 years)
 Friday 2.30-4.30pm [22] February (8-19 years)
 Friday 6-8pm [22] February (13-19 years)
 Contact Community Youth Teams
 ☎ 201 8600 or 243 5597

All Saints Youth Centre

Tuesday 4-5.30pm [19] February (8-12 years)
 Tuesday 6-8pm [19] February (13-19 years)
 Wednesday 2-4pm [20] February (8-19 years)
 Thursday 6-8pm [21] February (13-19 years)
 Contact Community Youth Teams ☎ 201 8600 or 243 5597

All Saints Youth Club

Every Monday 4-5.30pm (8-16 years)
 Contact Ellesmere Youth Project ☎ 213 3120

Vestry Hall Art Club exhibition

Wednesday 1-4pm [20] February ☎ 268 68

Verdon Recreation Centre

Contact Activity Sheffield ☎ 249 1626

Arts & Crafts and Multi-Sports (8-16 years) 50p

Monday 4-6pm [18] February

Dodge Ball and Table Tennis (8-16 years)

Tuesday 4-6pm [19] February
 Friday 4.30-6.30pm [22] February

Taekwondo Age: 6+ (Under 18's - £2.50 / Over 18's - £3.50)

Tuesday 6-8pm [19] February
 Friday 6.30-8pm [22] February

Multi-Sports (8-16 years) 50p

Wednesday 5-6pm [20] February

Football (8-16 years) 50p

Wednesday 6-7pm [20] February

Activity Camps Unleashed (8-16 years) £5

Thursday 10am-3pm [21] February

Soccer Skills (8-16 years) £1

Thursday 4-5pm [21] February

Mothers of Burngreave - Somali Dancing & Multi-sports

Thursday 7-9pm [21] February
 Saturday 5-7pm [23] February

Open Access Play Sessions (5-14 years)

Tuesday to Saturday 12-6pm through the holidays
 under 8's accompanied by a responsible adult
 Contact Pitsmoor Adventure Playground ☎ 273 4266

International Women's Day

8th March 11am-3pm
Verdon Recreation Centre

The year's theme:
The Gender Agenda: Gaining Momentum

Celebrating equal rights for women
and looking at achievements made by women



- Find out about common health issues
- Feel empowered to make positive changes in your life
- Many stalls including Health checks, health trainers, activities, fashion show, Mendhi artists, raffle and food.

To book a stall please contact
Somshun.nessa@soarcommunity.org.uk
07960 084119 or Shima.nazir@nhs.net



Need more sunshine? Seriously, you might! You might not be getting enough vitamin D

Vitamin D is important as it helps the body absorb calcium for building strong bones and teeth. The majority of this vitamin is made in our body from sunlight. However, due to the weather here in the north of England many of us are not able to get enough vitamin D in this way.

People at risk of vitamin D deficiency

Some people will be more at risk of vitamin D deficiency than others such as **growing children, pregnant women and breastfeeding mothers**. There are people who may be unable to make enough vitamin D from sunlight including people with **darker skin**, people who get very little sunlight on their skin (perhaps because they **cover their skin** for cultural reasons or are **housebound**), and **elderly people** as they have thinner skin. Others may be at risk if they do not get any vitamin D through their diet – people on **very low fat diets** and breastfed babies whose mothers are deficient in vitamin D are at risk for this reason.

Ways to increase vitamin D levels

There are some simple lifestyle changes that we all can make to increase our vitamin D levels:

- Try to spend time in the sun during the summer months but take care not to burn
- Buy vitamin D supplements suitable for you from pharmacies or supermarkets.
- If you are pregnant, breastfeeding or have children under the age of five Healthy Start vitamins are ideal and can be obtained from your local Children's Centre
- Try to eat foods such as oily fish, eggs and liver which naturally contain vitamin D. Some foods such as cereal and margarine may also have vitamin D added.
- **If you are concerned that you might not be getting enough vitamin D you can ask your pharmacist or GP and if you're pregnant or have young children your midwife or health visitor will be able to give you advice.**

Do you know the signs of Ovarian Cancer?

Are you a woman over the age of 50?

Only 3% of women know the symptoms.

When to see your doctor

If you are over 50 and you have any of the following symptoms most days for 3 weeks or more.

- Unexplained bloating
- Feeling full quickly or loss of appetite
- Pelvic or stomach pain
- Needing to pee urgently or more frequently than normal

Seeing your doctor early could save your life

Why don't women go to the doctor?

- They don't realise their symptoms are serious
- They worry about wasting the doctor's time
- They may feel embarrassed

Facts of Ovarian Cancer

- 80% of cases occur in women over 50
- 5th most common cancer in women
- Symptoms are similar to Irritable Bowel Syndrome (IBS) therefore GPs don't always pick it up
- 50% of women confuse Ovarian cancer with Cervical cancer and think screening detects both.
- 39% of cases present as emergency

Talks for Groups

If you would like someone to come and give a short talk about Ovarian Cancer, please contact Chris McCartney on 213 4065 or email chris.mccartney@soarcommunity.org.uk

Emotional wellbeing Group Sessions

If you are working with a group of women in Burngreave or Fir Vale, sessions are available on how to improve emotional wellbeing at home, including advice on domestic abuse.

Somshun Nessa 07960 084119
somshun.nessa@soarcommunity.org.uk or
[Shima Nazir shima.nazir@nhs.net](mailto:Shima.Nazir@nhs.net)

Sheffield Mind and Body Project

Promoting positive lifestyle change for physical and mental health

Women's Wellbeing (Taster) - 26th March
Women's Wellbeing starts 16th April
Verdon Recreation Centre, Verdon Street,

Zumba® Gold starts 28th February
Pakistan Community Association & Multi-cultural Advice Centre,

To book 258 4489 or email: info@sheffieldmind.co.uk

Merline Magdoline Brown 1943 - 2012

Lemuel Banton and Shirley Brown remember their mother Merline Brown, who died in November 2012:

Merline Magdoline Brown (nee Wint) was born in the District of Hyde which is in Trelawny in 1943 to Maud Walters. Merline was one of 16 children and the fifth child.

Mum was brought up in the church and would go as regular as possible. She met her husband Melvin Brown in the church and was married at the age of 17. Her first child 'Peggy' was born in 1962. Soon after that Merline had the chance to go to England and followed her husband, who got a job in the Steel Industry in Sheffield in 1963.

In the early years in Sheffield, Merline worked as an Auxiliary Nurse at Low Edges Hospital and Lodge Moor Hospital and then at a factory until she had to give it up as it was difficult to juggle work and children.

Merline was a keen gardener and had an allotment at Grimesthorpe Road where she derived much pleasure in growing things like, scallions, potatoes and tomatoes. I think this is where some of her children got their green fingers from as well as Mum showing them skills and patience in how to tend to plants and vegetation.

Merline was a very adventurous and fun loving person who also travelled a lot. Many places she would visit with her children, the Women's Group or other voluntary organizations that she was involved in. She travelled numerous times back to Jamaica and to America, France, Germany, Canada, Egypt, Tunisia, Nigeria, Spain, Holland and the Holy City itself – Jerusalem.

Mum loved to sing, she was an active member of SADACCA Women's Group and took part in many performances over the years – many we had pleasure in seeing – some of them extremely funny! In 2008 Merline was presented with a '25th Anniversary – Certificate of Appreciation' from SADACCA Women's Group – what an achievement – what commitment – what dedication!



No matter where Mum went she would make friends; people said she was a sweet lady, and they would do what they could for her. Her local bakery (Ellesmere Bakery) would save broken pastries for her at the end of the week or the butcher would put aside meat for her and give her more generous portions.

Merline loved life, she was a gentle, caring and loving woman who lived life to the full. There is a huge hole in our lives which will not be filled with the loss of our Mum.

Mum is our rock and foundation and we hope the love, generosity and passion that she showed us through her life will help to guide us in ours.

Mum we love you!

Merline leaves behind 8 children, 15 grandchildren and 5 great grandchildren.

Beyond Supplication

By Lingpa Karme Dorje

Since my auspicious birth.

Your worth... Uncalculable measure!

I treasure, your earnest luminescence & primordial presence, pure...

Fecundity of lush lavish cure,

Took me to the other shore of Great Bliss...

Beyond supplication, I kiss. Your Lotus~Born amberish face of pervasive compassionate light!

Your majestic reassurances, "Tings dem a'gu be alright!"...

Now in Empyreans of inconceivable contemplation, where adventitious obscurations,

Never arise...

You're my 7fold radiant wisdom, of cascading waters wise.

Hotep! (Peace)...

Madasi! (Thank you)... Mama...

Heru's Eyes!

A true success story

I am writing to share a story of true success from within the heart of your community.

I would like to tell you about my younger sibling Alia Akram, a former pupil of Firvale School, who left the school with a staggering 13 GCSE's 6A*, 6A, 1B.

Alia went on to Loxley college and gained 4A's at AS level and 3As at A level and then went on to Oxford university to

study law and received a 2:1 BA Jurisprudence. From there she went on to become a barrister. Alia was called to the Bar in the Inner Temple in 2011.

Alia has worked extremely hard at every level and it just goes to show that anyone can reach that level of success. I hope this inspires other young girls to work hard and achieve their goal and be where Alia is today, living the dream. And boy is she living the dream!

My family live in the area and we're extremely proud of Alia and wish her every success in the future.

Regards G. Akram



Owler Brook pupils work to improve Wensley open space

Story: Ayomide 9 years old

We at Owler Brook Primary School want to enjoy Wensley Park. But it is so bare. We are grateful for what we have but we want to add a bit more to the Wensley community.

We want to start with the old green patched park. It has lots of open space, but it's mostly plain - if you've ever walked across its lovely fresh grass, you would see it's not got much.

Outdoors and the eco area is very precious to us. We would love to form this park into an area of enjoyment, with swings and slides and roundabouts. As well as covering the land with equipment, we would also like to consider those of you who appreciate the open space.

School Council organise fashion show

Story: Claire Shaw, Senior Learning Mentor

Our school has been working very closely with Gladys Newbolt from Wensley TARA, Michael Hill from Arches Housing, Community Police Officer Steve Shipley and Derek Hird from PTC sports to provide activities after school and during school holidays.

This has resulted in our children using Wensley open space more. It is just across the road from Owler Brook School and backs on to Wincobank.

Our School Council decided they wanted to raise money to develop the area and park. They spoke to children across the school and did a survey. From the survey, we decided the best way of raising the money would be to have a fashion show.

They made a long list of what we wanted to do and how we wanted to do it.

They asked the Go Green team if they would like to help collect clothes that could be recycled into new designs for the fashion show. They wrote to children



and parents telling them our plans and asking for donations, and to other local schools, shops and colleges asking for their help.

They asked the teachers for a small group of children from each class (Y1 - Y4) to design the outfits.

Fashion student Melissa Wilson came in to help with designs and ideas. The children designed their outfits on paper before moving on to the clothes themselves, cutting, sewing and adding to the clothes that we received. A group of children from Whiteways School came along to show us their traditional clothes.

The School Council planned the whole event by themselves - the letters, the plan for the day, the music and the cost of the tickets.



It all came together on Wednesday 5th December. The stage arrived mid-morning while they directed and rehearsed the show. The children all allocated themselves a job, such as film and music producers, director, and speakers to talk about the individual designs. That afternoon we performed in front of the community.

The school is very proud of what they put together. Since then, they've been busy writing articles for the school newspaper and the Burngreave Messenger and thank-you letters to Whiteways School and Melissa Wilson.

They achieved so much in four weeks, from the decision-making to the actual event. They are now looking at other ways of raising money to develop the area, to make it a fun, enjoyable space for our families to use.

The children have provided themselves with a great life experience and an insight into various careers.



Valentine

by Edgar Lowman

George & Brian

Are you ready for your Valentine's date?

Did you get her the flower, like I said?)

Yes, I got the flour.

Not such a Silent Night!



Story: Kath Hobson

Firs Hill Primary's nativity play "Not such a Silent Night!" was performed by Reception, Y1 and Y2 children.

With fantastic costumes and some beautiful singing, the story was set in a cold winter's night in Bethlehem, when an innkeeper calls his animals into the stable. They make such a noise that they frighten little



Larry Lamb away. It's far from a silent night in the stable – until Mary and Joseph arrive, bringing peace. Meanwhile, Larry Lamb has run so far that he's lost and alone. A donkey, a camel and a sheepdog pass by - but none can help Larry get home as they don't know where he lives. "You should have stayed with your mummy!" they all tell him.

At last an angel guides Larry home. In the stable he is reunited with his mother, surprised to see the animals he met while lost, and meets baby Jesus. Everyone celebrates noisily, and once again it's NOT such a silent night!

A big thank you to Mrs Reid who worked extremely hard to put this play together and ran many rehearsals! Thanks also to the huge number of parents who came to enjoy the play and well done to all the children who took part!

Free Early Learning for two-year-olds

All children aged 3 or 4 are entitled to 15 hours a week at nursery free of charge. Now this is being extended to 2-year-olds from low-income families.

Going to nursery helps a child's development and well-being and gives them a head start for when they go to school. Children do better by going to nursery than staying at home – and it gives parents a break too. The nurseries below offer places in Burngreave and can help parents through the process of applying for the funding from the Council.

The places for two-year-olds are available to families on means-tested benefits or incomes below £16,100 a year. The places are for parents in or out of work. Places for 3 or 4 year olds are available to all.

Watoto Pre School (Catherine Rd)

– see advert on page 15

Tel 275 1817; E-mail info@watotopreschool.co.uk

Fir Vale Pre-School (Earl Marshal Rd)

Tel 303 0176; E-mail firvalepreschool@hotmail.co.uk

Ellesmere Children's Centre (Buckenham St)

Tel 281 2143; E-mail sharon@ellesmere-cc.fsnet.co.uk

Burngreave Children's Centre (Spital St)

Tel 252 5224; E-mail burngreaveycc@lea.sheffield.sch.uk

St Catherine's Talent Show

Story: Lewis, Zara and Ameera, St Catherine's School Council

Our School Council decided it would be a great idea to organise 'St Catherine's Got Talent'! Every class held auditions and one act from each class got through to the grand final that was held in the school hall on December 17th



In the final, we had singing, dancing, hula-hooping and joke-telling. It was great fun and there was some really funny Gangnam Style dancing! Two presenters from our School Council introduced the acts and a panel of judges (members of staff) all got into the spirit of the occasion with some sounding like Simon Cowell! Daniel commented "I thought the show was exciting and tense."

Some of the contestants were very confident on stage but others, like the Men in Blue, told us "We liked the chocolate prize and the comments we got but we felt nervous when on stage."

Alayah from Y6, who watched the show, told us, "I liked that you could see other people's talents and how good they were." Blake said, "It was amazing." The judges took their time but eventually were unanimous in choosing The Five Side Burneers, who did a song about sideburns in the style of a boy band! The whole hall erupted: they were a clear favourite with the audience.

All the acts received a prize for competing and it was such a success that we plan to hold one every year.



Burngreave in the snow



Photos by: Ivor Wallace, Gaby Spinks, Felson Tahir, Patrick Amber, Zabeda Hussain, Shamila & Ersalan Hussain, Rashida Hassanali, John Mellor, Usha Blackham, Lisa Swift and Rohan Francis.





Quality education and play
for each individual child

FREE EARLY LEARNING PLACES FOR 2 YEAR OLDS

ELIGIBILITY CRITERIA

Family income is below £16k

The term after your child's second birthday

Watoto Pre-School is registered with Sheffield City Council to offer up to 15 hours per week free early learning to eligible 2 year olds.

To book your 2 year old's place contact us now:

139 Catherine Road, Sheffield S4 7HJ
Tel: 0114 275 1817
Email: info@watotopreschool.co.uk
www.watotopreschool.co.uk

We have an experienced multi-lingual staff team fully qualified up to degree level

Our Ofsted rating is
GOOD with outstanding features

Ofsted Registered No. EY367292 / Registered Charity No. 1121786
Company Ltd No. 5876584

AmoRa BLINDS

VERTICAL BLIND SALE

VERTICAL • VENETIAN • ROLLER • ROMAN • PLEATED • VELUX

3 Easy Steps



1 Book a FREE appointment

2 FREE Measurement & Quotations

3 FREE Installation

3 FOR
£ 89*

5 FOR
£ 149*

CONSERVATORY FROM
£ 169*

12 MONTHS GUARANTEE

INCLUDES WHITE & CREAM FABRICS

*terms and conditions apply

FREEPHONE 0800 046 1502



Our Spital Hill artwork

Story: Lydia Flanagan | Photos: Richard Hanson

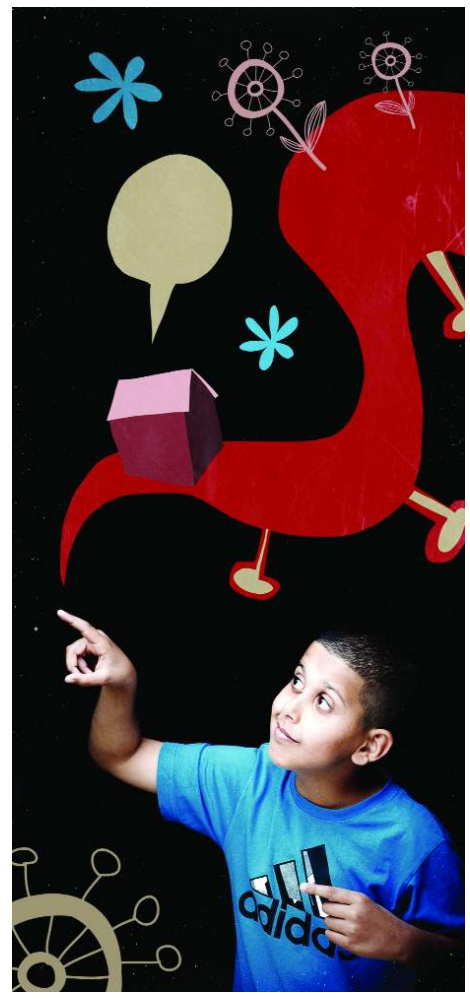
This coming February, part of a new art project run by Sheffield City Council called 'A Common Thread' will be installed on Savile Street.

Hoardings around the undeveloped site next to Tesco, on Savile Street, will display a combination of photos and artwork by artist Fabric Lenny and local photographer Richard Hanson. The artwork forms the backdrop to photos Richard has been taking for the past 6 months of people who live and work on Spital Hill.

The pictures show the variety of businesses and the great mix of people around Spital Hill. They will be a welcoming sight to the area with their bright and cheerful artwork and appropriate caption, 'Our Spital Hill - where variety is the spice of life.'

The aim of the project is to involve people in the changes in their area and express the history and aspirations of the local community. It is seen as a way of creating a visual link through the area and encouraging people to use the local shops.

To see the pictures and artwork, go to: acommonthreadsheffield.blogspot.co.uk





Dave, Boo Boo, Martin and George: the four Goons at Walesby Annual Camp, 1955.



The 205th processing on St George's day along Norfolk Street. Vin Machin on the left in his infamous white socks.

The 205th on the steps at the back of the Holtwood Hut. c.1963.

Holtwood scouts 70th anniversary

Story: Vin Machin Group Chairman, joined the Scouts, aged 7, in 1943

This year is the 70th anniversary of the 205th St Catherine's Scout Group. It was affiliated into the Scout Movement on 1st April 1943, during the dark days of World War II.

The first meetings were held at the old St Catherine's School on Andover Street (now replaced by Pye Bank School). The group was well supported by the school and Canon White, the Parish Priest and it flourished. The Scouts helped harvest the apples from the church orchard and the Convent of Mercy grounds, off Burngreave Road.

Bob-A-Job week was an important time when the Scouts went out to do jobs and raise money for the group. They also used to collect waste paper and jam jars and organise jumble sales.

I can remember making wooden trolleys with four wheels to go out into the community and collect jam jars. Andover Street at that time was a cobbled street and when the trolleys loaded with jam

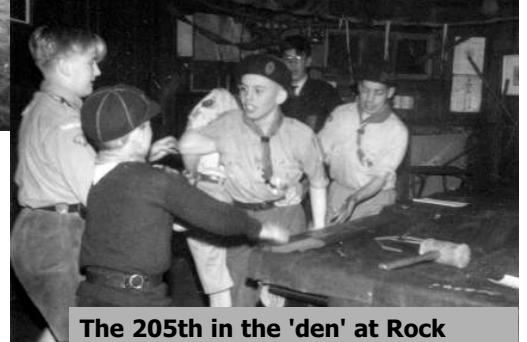
jars travelled on the street – more jars dropped off the trolleys, but it was hilarious and fun.

From 1950 the group used the cellar and billiard room in the old youth club at Rockside (a house now demolished just to the right of Osborne House).

The group had always dreamed of having its own headquarters in the area. In 1956, a fundraising committee was set up: Mr Illingworth, Mr Hammond, Mr Duggan, Mr Jackson, Mr Sheehan, Mr Buckley, Mr Smith and Mr Hart all had children in the group. Agreement was reached with the Duke of Norfolk to rent land at the back of the Sisters of Mercy Convent and work began.

The site was 15ft below the level of Holtwood Road and 20-30 lorries a day for 2½ weeks dumped building material there to build the level up. In 1958 we visited a disused RAF camp in Cannock Chase and agreed to buy, dismantle and bring the hut to Sheffield on three flat loader lorries. Back on Holtwood Road, everyone worked hard putting in foundations and laying the brick wall on which the hut sits.

During all this time, the group carried on meeting, excited by the plans to build a



The 205th in the 'den' at Rock House. You can see the billiard table. c.1956.

group hut. Many of the younger generation were now becoming leaders and patrol leaders for the group. I remember P. Duggan of course, who is still living on Holtwood, where he cares for the hut on a daily basis.

We travelled to collect the hut in 1960 and spent three days getting it loaded. On returning to Holtwood, there was rapturous applause and smiles all round. There was so much work to do to put the hut up and prepare the interior. By early 1962, the headquarters was completed and opened officially in the summer.

We can only thank and remember everyone who took part in these years of work to found the group. We will be holding events to celebrate this later in the year and we hope you will take part. This is the first part of our history. If you would like more information, please contact 205stcaths@gmail.com

Forest Gardening

Story: Tim Shortland, Community Forestry Officer

With the help of Sheffield Interfaith Group the Parkwood Springs Forest Garden has gone from strength to strength.

Five black mulberry trees have been planted on the open space above the helipad. A replacement mountain ash has been planted nearby. In national tree week 100 native trees were planted near the playing fields. The Rotary Club provided the trees through the Queen's Diamond Jubilee Tree Scheme and the planting was attended by members of the Rotary Club, the Friends of Parkwood Springs, Community Forestry and the Lord Mayor.

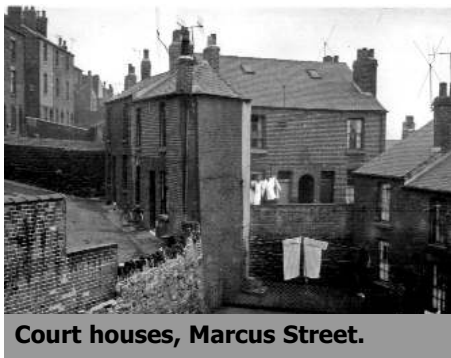


Workdays are open to all on the second Saturday of the month 11am – 2pm. Contact Tim Shortland on 273 4190 or tim.shortland@sheffield.gov.uk.

Harry Brearley: Discoverer of Stainless Steel

Story: Christina White & members of
Burngreave Local History Group
Images: Sheffield Local Studies Library

2013 marks a century since
Pitsmoor-born metallurgist, Harry
Brearley, made his historic
discovery of stainless steel. As the
city celebrates Harry's discovery,
Burngreave Local History Group
highlights the connection to our
area.



Harry Brearley was born on 18th
February 1871, in a courtyard house off
Spital Street. The house was less than
twelve feet square and nine people lived
within its walls. Harry's father worked in
the steel works and his mother took in
washing. When he was about five,
Harry's family moved to a slightly larger
house. The 1881 Census shows Harry,
aged 10, living at number 48 Marcus
Street, with his parents, three brothers
and two sisters.

Harry went to Holy Trinity School and
then Woodside Board School. He
remembers the boys of Woodside being a
ragamuffin lot - many having dirty faces
and tangled hair. Harry went to school in
a smock made of fine sacking and had
clogs on his feet.

Much of Harry's spare time was spent in
the backyard factories and "Little
Mesters" workshops around Woodside
and Nursery Street or in the railway
station at the bottom of Champs Hill
where he would help the drovers drive
the cattle from the station to the
shambles (abattoir). He loved to play at
marbles, pegtop and peggy.

Working Days

Harry started work at age 11, in a clog
shop. The day began at eight in the
morning and finished at eleven at night.
Harry was tired and miserable.



Plaque outside the entrance to the
old Firth Works commemorating
Harry's work.

Eventually he got a job as a 'cellar lad' at
Thomas Firth & Sons. He fetched and
carried for the men working on one of
the crucible steel-making furnaces. Harry
was not a robust lad but his older brother
Arthur helped him with heavy work. In
October 1883, Harry got a job as bottle
washer in the laboratory at Norfolk
Works. The new chemist, James Taylor
got to know Harry and encouraged him
to read chemistry and algebra. Harry also
attended night school where he studied
mathematics, physics, German, Latin and
literary subjects. Harry continued with his
studies and would sometimes read for six
hours a day. When he was twenty-four,
he got married and went to live in a
cottage on the edge of the Derbyshire
moors. He was still very poor. He made
all the furniture for the cottage and
repaired the household shoes.

Research Work

After spending some time in Russia,
Harry was engaged by Firth's to build a
research laboratory and, in 1908, he was
asked to lead a team to find 'rustless'
steel. He discovered this by adding
chromium to molten iron. It was later
called stainless steel. Harry left Firth
Brown's in 1915 following a disagreement
over patent rights.

Honoured by the city

In 1925, Harry became a director of
Brown Bailey's. He was made a Freeman
of the City in 1939. One honour he
greatly valued was the Bessemer Medal



Harry Brearley receiving 'Freeman
of the City', 6th June 1939.

awarded to him in 1920 by the Council of
the Iron and Steel Institute.

Harry died on 14th July 1948 in Torquay.
He is buried in Sheffield Cathedral.
Although Harry's birthplace is now gone,
the location lies closest to the Surestart
Children's Centre on Spital Street.

As part of the 100-year celebrations for
Harry Brearley's discovery of stainless
steel, there are a number of exhibitions
and events across the city:

- **Rustless: The Harry Brearley Story** is on at Kelham Island Museum from 1st April until 17th November.
- **Designed to Shine** runs at the Millennium Gallery from 16th February until 13th October.
- Burngreave Local History Group will also be hosting a **talk by Robin Fielder** on the life of Harry Brearley at St Catherine's School on March 8th at 10am.

For more information about the Local History Group please contact the Burngreave Messenger on 242 0564 or email: mail@burngreavemessenger.org

The Messenger will be joining the
celebration of the life and work of Harry
Brearley with a special piece in each
issue this year. We are hoping to tell the
story of local residents who have worked
in steel, their families or anyone with any
memories of the steel industry near
Burngreave, Pitsmoor and Fir Vale. If you
would like to add your voice to the
project, please contact us on 242 0564 or
email: mail@burngreavemessenger.org

Harry Brearley's story is one of a
collection of articles about the prominent
figures and historic landmarks of
Burngreave, reproduced in the local
history book 'Pitsmoor: a peek into the
past'. Copies of the book are available for
£7 from Burngreave Library or the
Messenger.

Learning English at the Vestry Hall

Since September 2011, the Yemeni Community Association (YCA) has been supporting refugees at Burngreave Vestry Hall.

The Vestry Hall was designed to be a learning centre but several providers moved out in 2011. Now the centre is focused on learning again. The English classes are available to those who have refugee status and range from very beginners to entry level 3.

YCA tutor, Yasmeen Iqbal, explained, "The classes are free for refugees. People have come from all over the world such as Eritrea, Sudan, Iran, Ethiopia, Congo and Nepal. Many people can't go back or are not allowed back and need to make a life in this country. People don't want to rely on interpreters and want to get jobs and be independent. Learning English will help them have a good life here."



Members of the class shared their thoughts on learning English and why it was important to them.

"I want to learn English because I am improving my speaking." Lal Tamang

"I want to learn English so that I can help my family and children and other people." Nirmal Sharma

"I want to learn English so that I can become a great man in future." Sancha Tamang

"I want to learn English because it is very important for me and I need to communicate with everybody." Hadasi Negasi

"In my future I want to learn high level education and I want to be a nurse. I want to learn English so that I can communicate with people and can help myself." Gano Kadir

"I want to learn English so that I can communicate with people such as my friend the doctor at the GP surgery. I want to learn English because I want to study for College." Joma Mohammed

If you have refugee status and need ESOL classes contact Nasreen Iqbal at the YCA on 256 0933.



Ski Village will not reopen

Story: Lydia Flanagan | Photo: Douglas Johnson

Earlier in January, another fire broke out at Sheffield Ski Village, damaging hope of the Ski Centre ever reopening.

The first fires started early in 2012, when the main building was completely burned to the ground. Since then a number of fires have destroyed other areas of the site, making it difficult to insure.

The Ski Village opened in 1988 as Europe's biggest artificial ski slope. Over the years, it accumulated many loyal members and staff. It was home to the Sheffield Sharks Ski Club and produced a number of professional skiers. The Club

had used the slopes since its opening and has around 50 members.

Property developer Kevin Pullan took over the Ski Village in 2007 and promised a £500,000 investment for improvements and expansion into activities for children. More activities were provided, like quad biking, bowling, laser tag. They also held children's birthday parties. However, towards the end, skiers reported the facilities were becoming run down and in desperate need of repair.

Ski Village staff volunteered to accommodate the Sharks after the first fire because the slopes were still usable. In the following fire though, the lift controls and slope surface were destroyed.

It is uncertain what will happen to the site now.

Landfill restoration plan

Story: Neill Schofield

Negotiations between Viridor and the City Council continue about how Viridor will restore the Parkwood Springs landfill site when it closes at the end of 2018. Viridor have until the end of 2020 to restore the site to an agreed plan, although they will continue to own and manage the land indefinitely.

The Friends of Parkwood Springs understand that much of the plan is agreed but there are issues as to how footpaths will connect with the rest of Parkwood Springs and when the public will get access. Viridor will generate electricity from the gas produced from the landfill for many years after the tip is closed. Viridor says it is concerned about

health and safety and vandalism if the public are allowed onto the site prematurely.

Councillor Ibrar Hussain has asked for a special meeting of the Landfill Liaison Group in February, so that local residents on the Group can hear about the current position and give their views.

The Friends of Parkwood Springs, said,

"We understand that, even after the tip closes, it will need to be managed so that it is safe. But it covers an enormous area. It should be possible to maintain adequate security and yet allow access to the public in those areas where it is safe to do so."

"We have put up with the Landfill for long enough. We need to be able to see a time in the future when we will be able to enjoy the hillside and the views! We can't be expected to accept a blanket closing-off of the whole landfill site for ten years or more after it is closed."



Pie and Pea Murder Mystery

Story: Pam Eaton | Photos: John Mellor

On Saturday 19th Jan, despite the poor weather, the DISORIENTATED EXPRESS left Pitsmoor Methodist Church just after 7pm - destination Constantinople - carrying members and friends old and new.

Due to some cancellations some lucky passengers were upgraded to 1st class accommodation whilst others remained in 2nd class.

Not long into the journey, a terrible scream was heard as someone discovered a body, which was identified as Werner Von Black, a rocket designer.

The Guard E Lou took charge of the situation and asked everyone on board to try and discover WHO DONE IT.

Some of the travellers gave accounts of themselves and reasons why they could not possibly be the murderer, whilst others kept quiet about themselves and asked many questions of their fellow travellers.

Eventually everyone was feeling hungry and it was decided to serve a meal.

1st class passengers were treated to silver service by two very young waiters whilst the more common travellers went to the Buffet car for their Pie and Peas. This gave everyone more time to ask questions and listen before Guard E Lou led us to decide who we thought was the murderer.

If anyone would like to register interest in any further events please contact 243 5333.



No.1200. Coal Strike.1912.Poor digging for coal. Sheffield.

Digging deep into local history

Story: Saleema Imam | Image: courtesy of Sheffield Local Studies Library

The Friends of Burngreave Cemetery and Chapel have a new project - 'Digging Deep under the Cemetery.'

It is one of the first groups in the UK to receive an 'All Our Stories' grant from the Heritage Lottery Fund. The £5,300 grant will enable local people to learn skills to research the history of the mines beneath the land the cemetery now occupies.

The course will take place on Fridays

1st February, 1st March, 12th April, 3rd May, 7th June and 5th July covering:

- local history training sessions in the Burngreave Vestry Hall, access to local history archives and other records, writing workshops to produce material for the Burngreave Messenger, a book and a drama production.
- a photographic exhibition and artworks within the cemetery.
- archaeological surveys of the various mineshafts seen on early 19th century maps.

For further information, please contact Saleema on 07950 299 073 or saleema.imam141@gmail.com or visit friendsofburngreavecemetery.btck.co.uk

Cemetery Chapel activities

The 'Friends of Burngreave Chapel & Cemetery' group was set up "to make the cemetery and chapel buildings accessible to everybody and to educate and enlighten visitors into not only its history, but its wildlife, trees and plants, which overlap and interact."

The group of unpaid volunteers transcribe grave records onto computer, help visitors find graves and organise regular fun activities throughout the year.

Sunday craft sessions will take place (2 - 4pm) until 2nd June, including:

- Lantern-making for Sharrow Lantern Carnival - this year's theme is 'Roots'
- Decor-making for Peace In The Park festival
- More experimental shadow puppets and projections using our big screen!
- Pottery with Nick (using potters wheel)

For more info, contact patrickamber@rocketmail.com or phone 07715 270 384

Raising issues with the Council at your local Ward Meeting



Do you have a local or policing issue? Come along to the Burngreave Area Ward meeting where you can raise questions and hear what the North East Community Assembly is doing.

You can find out:

- what services are doing to resolve a particular issue
- what is happening locally
- how to resolve a problem
- get Councillors support and involve other residents in solving a problem.

Thursday 28 February at Fir Vale School Dining Room, Owler Lane, S4 8GB from 6-8pm.

Agenda to include:

- police report
- find out how your local streets are being improved
- future priorities for Burngreave

Do you have a suggestion to improve streets/pavements in your area such as highway markings, double yellow lines, dropped kerbs?

These will be considered as the Streetsahead project moves around the city to improve our streets (Parson Cross area and Owler Lane/Holywell Road/Barrow Road/Ecclesfield road areas are targeted for April-June 2013).

You can submit your suggestions by telephone on 0114 273 4479 or online – www.sheffield.gov.uk/roads. (Please note all requests will need to be for the benefit of the wider community).

Finding out what is important in your area

Thank you to everyone who completed the cards which were included in your last issue of the Burngreave Messenger. Also to those who emailed the Assembly team or completed the survey. You provided interesting and valuable information

that will help in putting together the Assembly Plan. The next stage in the process is for members to consider what the most important priorities are and this information will be available at the Burngreave Ward Meeting – (see details above).

Community First Burngreave

The Community First Burngreave website has now been updated www.burngreavecommunityfirst.com. This has been possible with funding from the North East Community Assembly.

You can find information about the dates of the next round of funding – Year 3 will start in April 2013 and there will be another £50,000 available

– and the projects that have been funded in Years 1 and 2.

The Community First Panel is tasked with distributing the funds available. This panel is made up of people who live and work in Burngreave. They volunteer their time and over the past 2 years have made the decisions about which projects receive funding.

If you would like to join the panel please use the panel's email address – burngreave@hotmail.co.uk

Bring Out Your Rubbish days

If you live in the following areas look out for a leaflet through your door explaining how you can get rid of your unwanted items:

- Abbeyfield Road
- Crabtree Road
- Scott Road
- Vivian Road
- Whiteways Road
- Bressingham Road

These will take place between the 19th and 28th February 2013.



Jackie Drayton Ibrar Hussain Talib Hussain

Councillor Surgery Dates

Your local councillors share surgeries on a rota basis.

9th February: Ibrar Hussain, 11am–12pm Burngreave Library

19th February: Jackie Drayton, 12pm–1pm Norwood and Bishopholme TARA

21st February: Jackie Drayton, 2pm–3pm Pakistan Advice Centre

9th March: Talib Hussain, 11am–12pm Burngreave Library

19th March: Jackie Drayton, 12pm–1pm Norwood and Bishopholme TARA

21st March: Talib Hussain, 2pm–3pm Pakistan Advice Centre

jackie.drayton@sheffield.gov.uk

ibrar.hussain@sheffield.gov.uk

talib.hussain@sheffield.gov.uk

Contact us on 203 7562, email communityassemblynortheast@sheffield.gov.uk, or write to: Firth Park Library, 443 Firth Park Road, Sheffield, S5 6QQ.
Blog – www.sheffield.gov.uk/northeastnews
Website – www.sheffield.gov.uk/northeast



New housing on Ellesmere

Story & photos: Rohan Francis

Despite January's freezing temperatures, the first tenants of the new Ellesmere Road housing scheme received a warm welcome into their highly insulated and energy-efficient homes. Developer, Arches Housing, are likely to complete the remaining properties by the end of February.



When completed, the development of 19 houses will offer a variety of house types including 5, 4, 3 and 2 bedroom properties. Each home is designed to lower the occupants' energy use, particularly water heating, by using lots of insulation in the walls and careful sealing of gaps in the joints to prevent internal draughts. The buildings are fitted with Photo Voltaic tiles which will provide free electricity. Arches say these measures should significantly lower tenants' energy bills.

The 3 bedroom house that Arches showed us round felt nice and warm. The finishings were good quality. The one thing that struck us was the size of the windows, which provide the interior with lots of light – even on the gloomy day we visited.

Standard features such as a fitted bathroom and kitchen, with space for all modern appliances, understairs storage, openable double-glazed windows, gas central heating and a garden with shed, provide families with basic facilities to set up home, whilst a number of the properties have been specially adapted to meet the needs of households with users of wheelchairs or mobility aids.

The properties are awaiting final certification, but Arches said the Ellesmere properties have achieved 'Code 5 for Sustainable homes' – a very high rating for domestic buildings of which there are currently very few in Sheffield.

Those properties not already let, will be allocated via the Council's 'Choice Based Letting Scheme', which can be accessed through the website: www.sheffieldpropertyshop.org.uk or at Burngreave Housing Office.

Although cuts to housing benefit may impact on potential tenants come the changes in April, Arches said they are allocating their houses based on the current benefit allowances. They are, however, offering advice to any current tenants who may fall under a cut when changes come in. Arches think that, even if their tenants' benefits are cut, some will choose to stay, as they could make up the difference through the reduced energy costs of living in such highly insulated homes.

New signs for Bressingham

Sheffield Homes are planning to renew some of the signs around Bressingham because some are worn out and some are confusing.

Burngreave Tenants and Residents Association have been working with Sheffield Homes to suggest which ones should be changed. If you live on Bressingham and you have a view, please contact the TARA, 07983 921 653 Mon-Fri 10am-2pm, burngreavetara@gmail.com. Or come to a TARA drop in at Burngreave Vestry Hall, 2-4pm on 12th February.



Get some help with IT

If you want to learn how to use computers and the internet, then there's help available in Burngreave with your Tenants and Residents Associations (TARA).

Free and friendly computer classes are running at Burngreave Vestry Hall on **Wednesdays 1-3pm**, and at Carwood TARA on **Tuesdays 10am-12pm**, starting 5th February.

You can find out how to use a keyboard and a mouse, get yourself set up on email and Facebook, look for and apply for jobs, and find online advice about personal finance, benefits, healthy eating and exercise, and how to save money on your domestic bills. Margaret Williams of Burngreave TARA said, "Everyone is really enjoying their learning. It's informal, local, and the tutor works really hard. I'd recommend it to anybody!"

For more information, please call James on 07926 109 426.

Carwood craft group

Story: Michelle Cook

Despite the snow, a determined and lively bunch of crafters gathered on Monday 14th January at Carwood TARA for the launch of the new Craft Club.

The club meets **every Monday at Carwood Community Room 10am -12.30pm**. People either bring a project of their own which they are working on or start a new one. This could be knitting, sewing, card making, embroidery, whatever craft they like. All equipment is provided, people provide their own fabric and wool and contribute £1 a week to keep the club going. We hope to bring together people from all over Burngreave and motivate people on the Carwood Estate. We are a friendly bunch, all sharing our skills and having a good natter!

Dear Messenger...



Write to: Abbeyfield Park House, Abbeyfield Road, Sheffield S4 7AT

Why is Fir Vale treated in this disgraceful way?

Dear Messenger

I read with interest Ahmir Hussain's comments about the area in the last Messenger and would like to take this opportunity to endorse everything he says.

Having lived in this area since 1985, myself and my neighbours have watched with dismay its rapid descent from a pleasant, clean neighbourhood.

There is no quality of life here, no real community spirit, all our attempts to improve the area are thwarted by anti-social yobbos. The powers that be show scant interest in addressing these problems.

There are no real facilities, and many elderly folk live in fear and isolation in their own homes, afraid of what's going on outside.

So, Sheffield Council, tell us the answer to the question we're all asking: Why is Page Hall/Firvale being treated in this shoddy and disgraceful way?

*Yours sincerely,
Ian Wallis*

Get something done about Hospital Parking

Dear Messenger

I agree with the local resident that wrote about Fir Vale, especially the parking. Why should residents have to pay to park outside their own houses? We have a garage with one car inside, the other is on the drive. I have lost count as to how many times we can't even get our car out of the drive as people park so far over into our entry we can't get out. And when we do get out we come home after one or two hours and can't get in for the same reason. Also they park opposite the driveway then it's a struggle to get out and we are backwards and forwards which is so annoying.

Today, 4th December, someone blocked us in and we could not get out from 9 o'clock to 4 o'clock. If my husband wants to get his car out of the garage he has to get mine out of the drive and can't even park outside our house as someone is parked there, so he has to drive up the road to find a spot. He then gets his car out, then has to put mine back on the drive as he does not want to obstruct somebody's spot outside their house. A few weeks ago it was the same thing; it was pouring with rain, we came home from shopping, could not get in, cars either side blocking our entry. We had to park half way up the road and carry shopping in the pouring rain. It was parked there all day. Around 5 o'clock the person came and when we complained all we got was cheek. Can you imagine how we felt? This council should get something done about it. Get some marking on the road so only the residents can park. Remember we pay our road tax, as do others on the road.

*Thank you,
A local resident*



New police Commissioner

The new South Yorkshire Police Commissioner Shaun Wright, visited Burngreave Vestry Hall on Saturday 26th January, following an invitation from Al-Taqwa mosque.

Speaking to the residents who had braved the snow, he said, *"This is a diverse community which we should be proud of. Communication is an issue for us in an area with so many languages and we need the help of those who are multilingual to work with services like the police, so that we can work together to get better services for local communities."*

Mohamed Ali, Imam at Al-Taqwa mosque, thanked everyone for organising the event.

"In 2011, young people from our community died. It was a difficult time. We would like to thank the police for the work they have done and we are continuing to develop a better relationship with the police."

Imam Ali invited the Commissioner to join the Somali community again for the launch of the **Somali Community Forum on 2nd March, 12noon at Burngreave Vestry Hall.**

Cobweb bridge reopens

Story & photo: Rohan Francis

The Cobweb footbridge over the River Don at the Wicker Arches reopened in December after Council repairs were made possible by a donation from the Five Weirs Walk Trust.



The work was necessary after the bridge became unsafe due to deterioration of the timber decking. It had been closed for safety reasons and walkers had been forced to take a detour around the inaccessible stretch of the riverbank. This latest work includes temporary repairs which the Council plans to make permanent later this year.

The bridge, which owes its name to its distinctive 'web' of steel suspension cables, hangs beneath one of the stone arches of the Wicker Viaduct. It was opened in 2004 but has seen previous closures due to the repeated theft of metal cables.

ART

ARWA RELAXATION THERAPY

Hot-stones Massage
Full hour: £45
Half hour: £25

Holistic Massage
Full hour: £40
Half hour: £22

Relaxation training
For a group (up to 10): £70
One-to-one: £40

20 minutes extra FREE
on your third hour within 6 weeks
(please call for more information)

Indian Head Massage available

Student discount: 10% off full hour

GIFT VOUCHERS AVAILABLE

Contact Arwa Havard on:
07532 329 723
foreverarwa@gmail.com
artmassage.yolasite.com

Find ART on Facebook
Search for 'Arwa relaxation'



Women only





Seasoned Logs

£3 per sack
£59 per trailer load: 5' x 3' (1½' deep)
£30 per half trailer load

Discounts for bulk buying

Tel: 0114 276 1754
Mob: 07948 822 308

Qualified tree surgeon (CS39)
All aspects of tree surgery undertaken
Fully insured. Free quotes

NO DELIVERY CHARGE





Fir Vale

PHARMACY

- Consultation Room
- NHS & Private Prescriptions
- Free Collection & Delivery
- Health Care Advice
- Repeat Dispensing
- Medicines Use Review





Open 7 days a week, 8.00am–10.30pm
(0114) 242 0009

29 Rushby Street, Fir Vale, Sheffield S4 8GN

THE ACCIDENT PEOPLE™

ACCIDENT: INJURY: COMPENSATION:

Had an accident at the Work Place?
Back Problems? Aches & Pains? Or any other Injury?
We can help you get the compensation you deserve.

Care Homes • Offices • Call Centres
Factory • Warehouse • Supermarkets
All other places of work

If you have suffered an accident at work and wish to find out if you can claim, then feel free to contact us.
We are here to help you.

No Win No Fee : Personal Injury Solicitors

We are passionate about Access to Justice.
You can contact us for absolutely free advice.

Freephone: 0800 034 5150

Sorby House, 42 Spital Hill, Sheffield, S4 7LG
Customer Contact Centre: 01296 318579
Text "JUSTICE" to 0794 6480 017 & we will call you back
Email: info@accidentpeople.co.uk
Web: www.accidentpeople.co.uk

The Accident People is part of Orange Marketing Ltd. Orange Marketing Ltd is facilitating Solicitors Group Marketing on behalf of member solicitors. All member Solicitors are authorised and regulated by the Solicitors Regulation Authority. Orange Marketing Ltd is regulated by the ministry of justice in respect of regulated claims management activities: Authorisation No: CRM26398.

Pitsmoor Dental Health Centre

Wholistic Dental Care

Dr Alan Moffatt
Dr K M Ackom-Mensah

**139 Burngreave Road,
Sheffield S3 9DL**
Tel: 0114 272 3076
Fax: 275 0963
Mobile: 07831 116 340



YOUR LOCAL ACCOUNTANTS

Halisdene Accountancy

Petre House, Petre Street, Sheffield S4 8LJ
Telephone: 0114 261 1867

* SELF ASSESSMENT RETURNS *
* COMPANY, PARTNERSHIP & SOLE TRADER ACCOUNTS *
* BOOK-KEEPING * PAYROLL etc. *

We offer a full range of Accountancy Services

*** LOCAL**  **CINEMA MOT CENTRE LTD**

*** RELIABLE**

*** AFFORDABLE** Class 4 & 7 Tested

Car MOTs only £30

MOT & Service from £99

52 Goddard Hall Road
Sheffield S5 7AP

Tel: 0114 242 3047
Mob: 07852 151 257

 **SWIFT PHARMACY** NHS
BURNGREAVE

Your Local Late Night Pharmacy

We can order, collect and deliver your prescription to your home for **FREE**

Tel: 0114 272 3366 1 Gower Street | S4 7HA

OPEN 7 DAYS A WEEK TILL LATE

Mon-Sat 8am to 11pm Sunday 10am to 8pm

Prime PIZZA and **PRIME CURRIES**

Open 7 days 4.30pm-Midnight

Free delivery on orders over £10.00 and 70p for orders under £10 within a 3 mile radius

All Pizzas have a fresh base of Mozzarella Cheese, Special Recipe Pizza Sauce and Italian Herbs cooked to perfection!

Create your own Pizza!

We also offer Burgers, Southern Fried Chicken, Kebabs, Garlic Breads and Curries

243 9786 or 243 2442
38-40 Firth Park Road, Firth Park, Sheffield
Or order online at www.primepizza.justeat.co.uk



TYRES

PART WORN TYRES **NEARLY NEW** **PUNCTURE REPAIRS** **NEARLY NEW**

Open 7 days 9am - 6pm



490 BARNSELY ROAD

NOW OPEN **KEBABISH**
GRILL BAR

FREE HOME DELIVERY



(0114) 261 80 80 www.kebabish-grill-bar.just-eat.co.uk
46 Firth Park Road, S5 6WN / 25-27 Wicker S3 8HS

WICKER PHARMACY
Open Late EVERY day of the year!

FREE delivery of medicines to your home!

www.wicker.co.uk

Award Winning Pharmacy

Just phone our friendly staff and arrange for your repeat prescriptions to be delivered to your home or place of work. * **(0114) 253 6888**

* Delivery free to Sheffield area only. an ASSOCIATED CHEMISTS (WICKER) LTD service, 55-67 Wicker, Sheffield.

UNIVERSAL PIZZA & BURGERS 

LUNCH SPECIALS (11AM-4PM ONLY)

CHEESEBURGER, KEBAB MEAT, ZINGER BURGER, CHICKEN WRAP, CHICKEN/SPICY WINGS OR TOASTED PANINI MEALS, ALL WITH FRIES & PEPSI

EACH FROM **£2.60**

UNIVERSAL PIZZA & BURGER BAR

OPENING HOURS
Sun: 3pm - 11.30pm
Mon to Thu: 11am - 11.30pm
Fri & Sat: 11am - 12 midnight

FREE DELIVERY
Up to 4 miles • minimum delivery £10

5 Stubbin Lane, Sheffield, S5 6HQ **TEL: (0114) 244 5252**

Advertise in the Messenger

Discounted rates for Burngreave businesses and organisations.

To find out more, contact the Messenger on **(0114) 242 0564**

Or email us at mail@burngreavemessenger.org



Next deadline: 6th March, for publication on 23rd March.