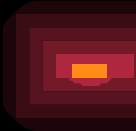
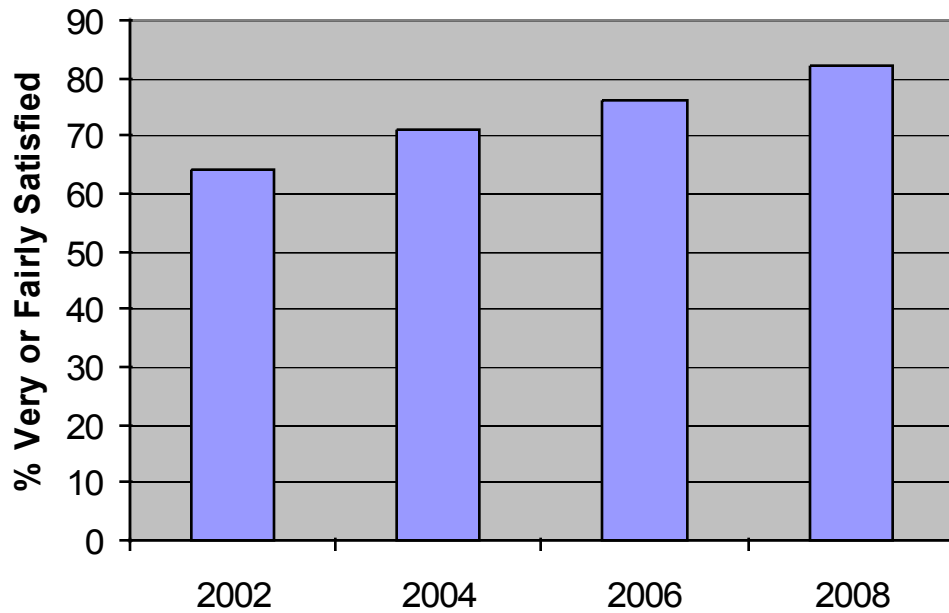


MORI Household Survey



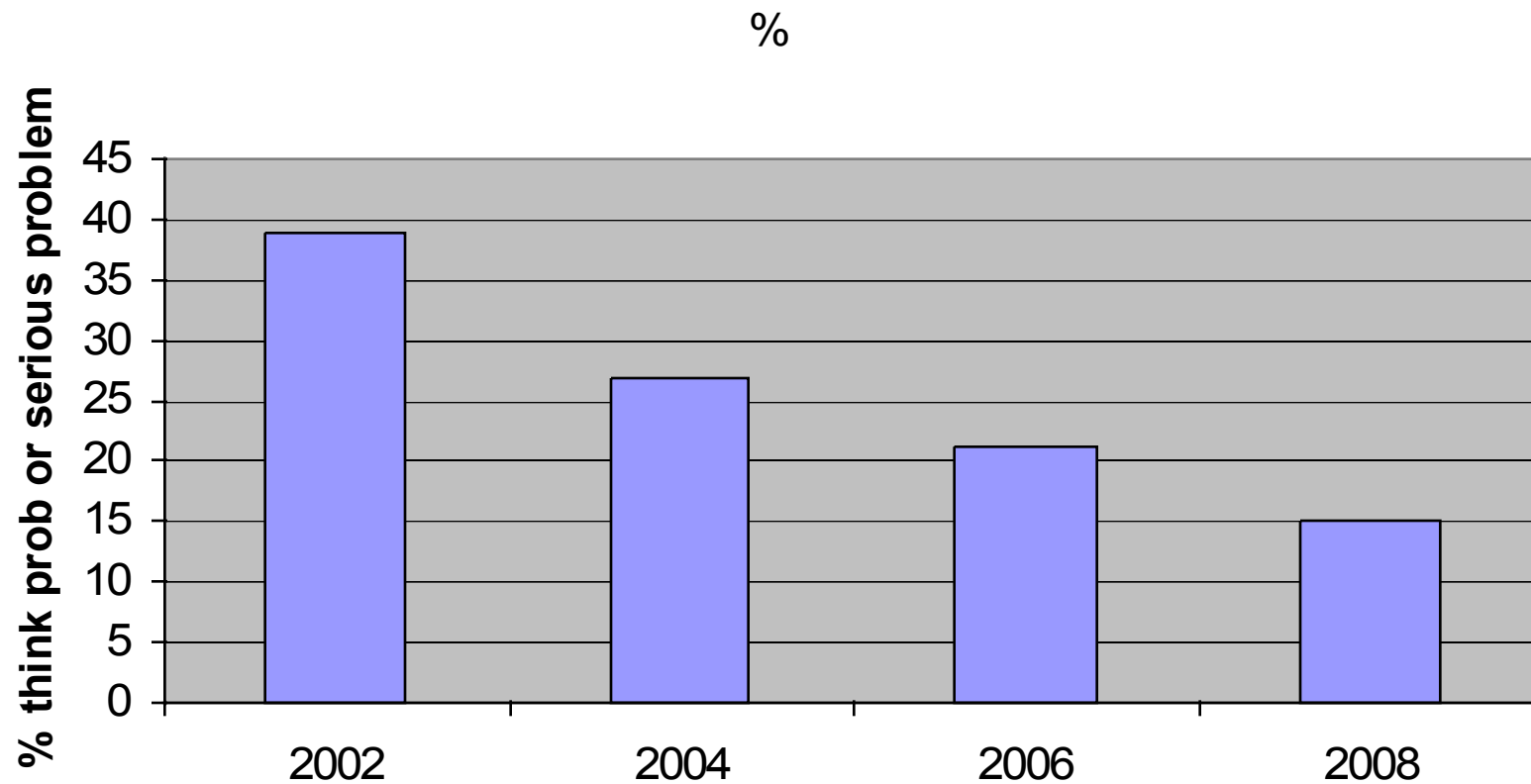
- **Done in every NDC area**
 - **Robust sampling etc**
 - **400-500 people surveyed every 2 years**
 - **Undertaken every 2 years from 2002 - 2008**
- 

Satisfaction with the Area as a place to live

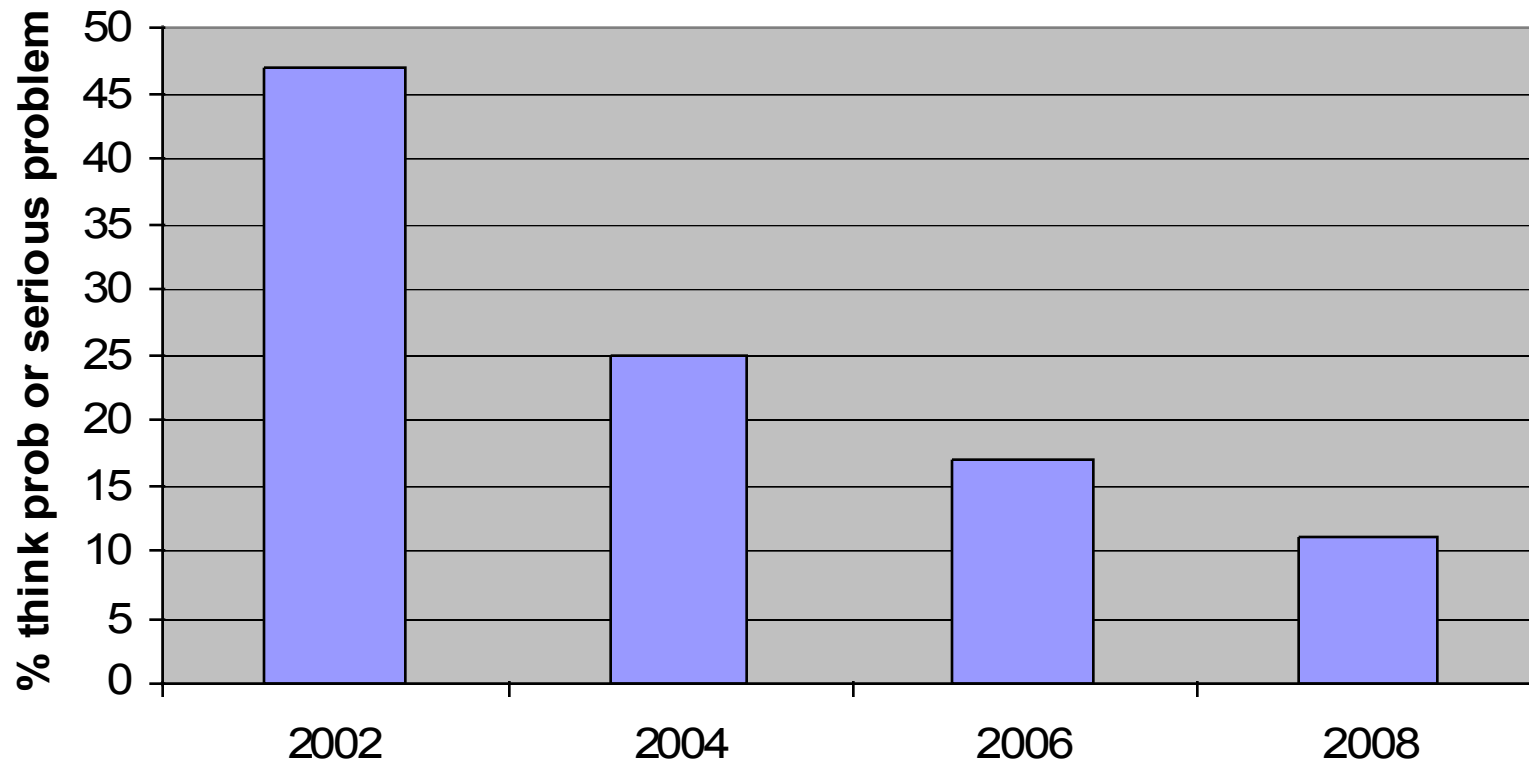


- **% Very / Fairly Satisfied**
- **2002 – 64 %**
- **2008 – 82 %**
- **Significant difference**
- **National – 86%**

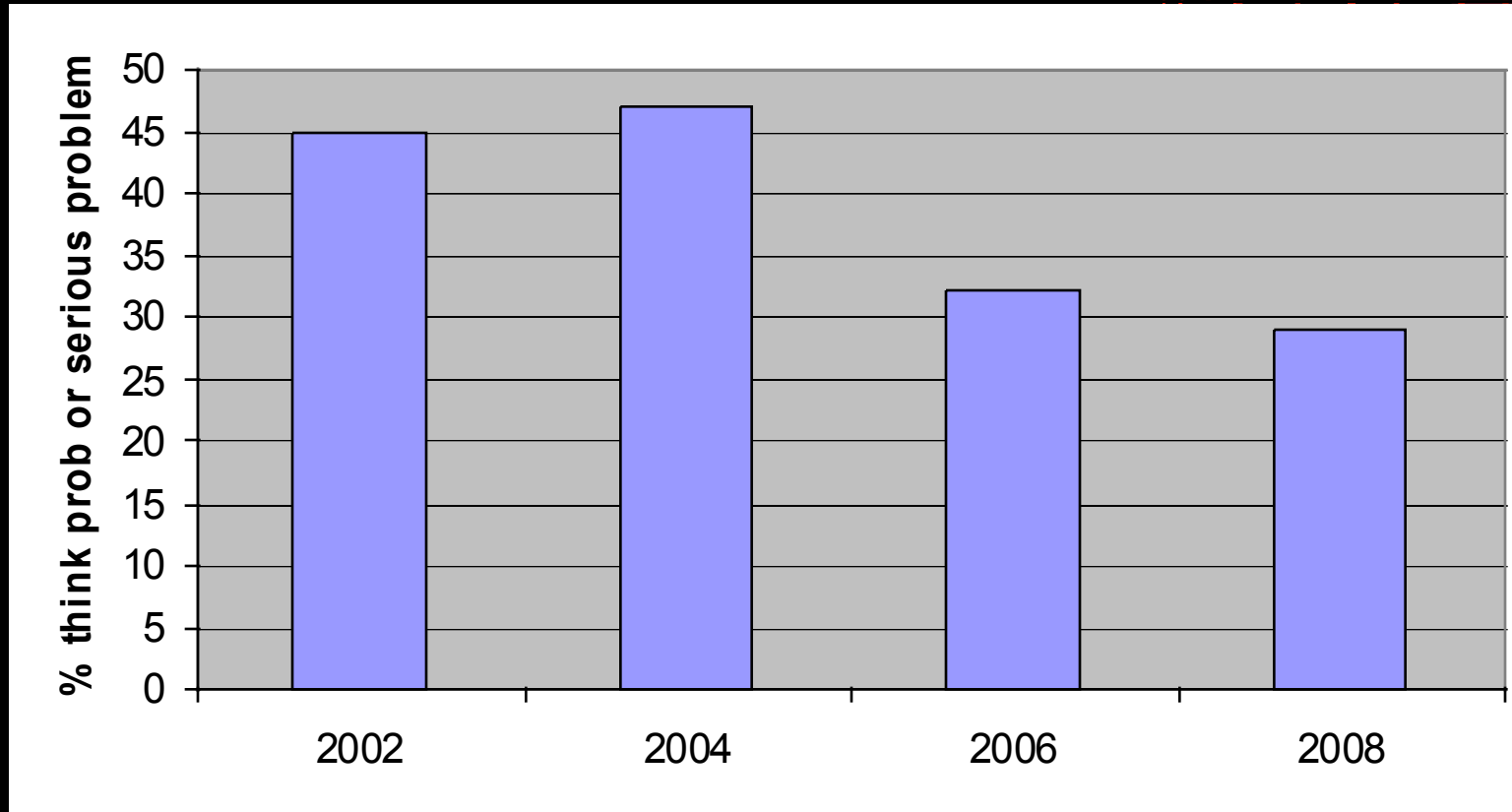
Run down or boarded up properties



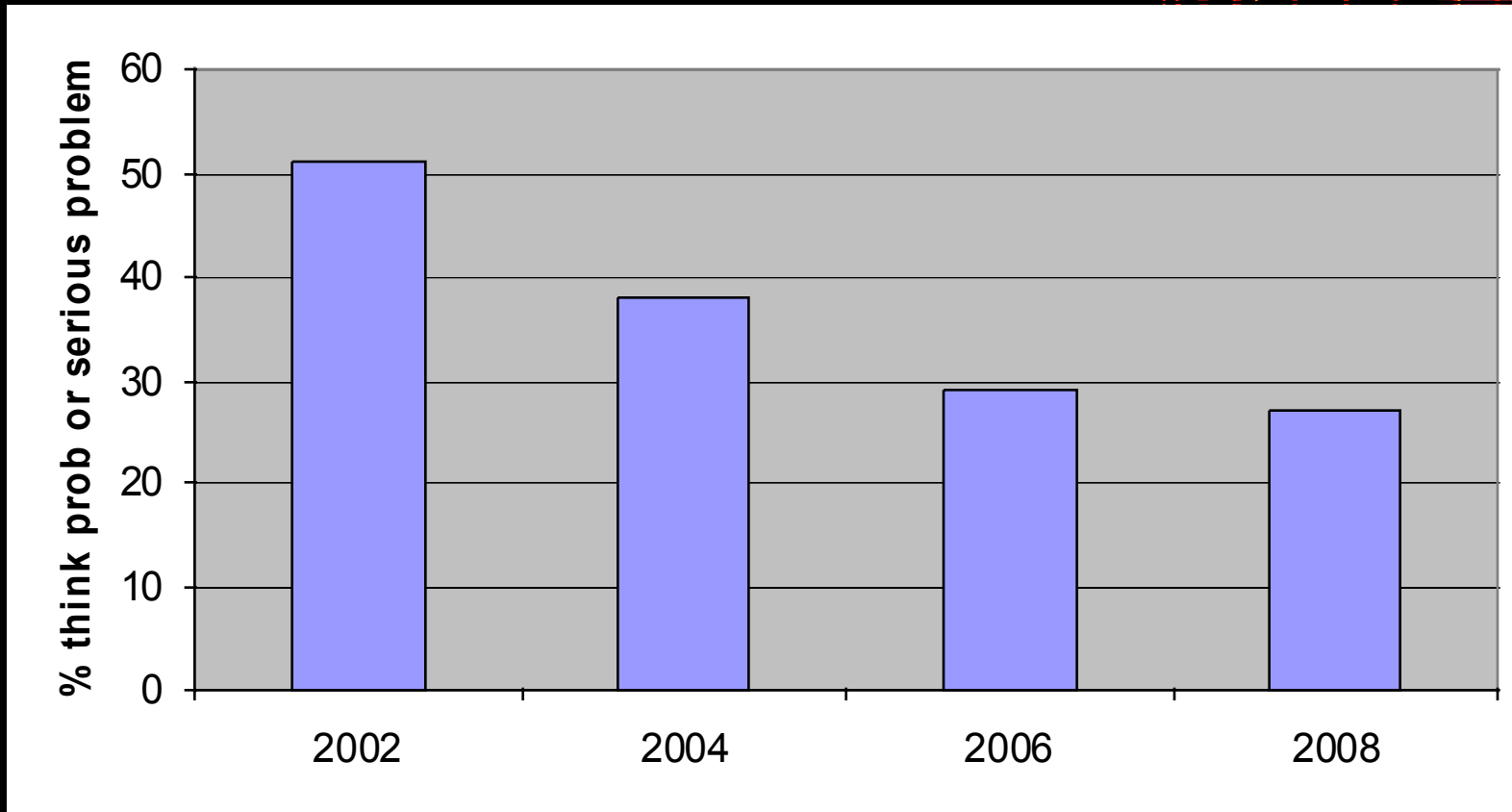
Abandoned or burnt out cars



Poor quality parks



Burglary

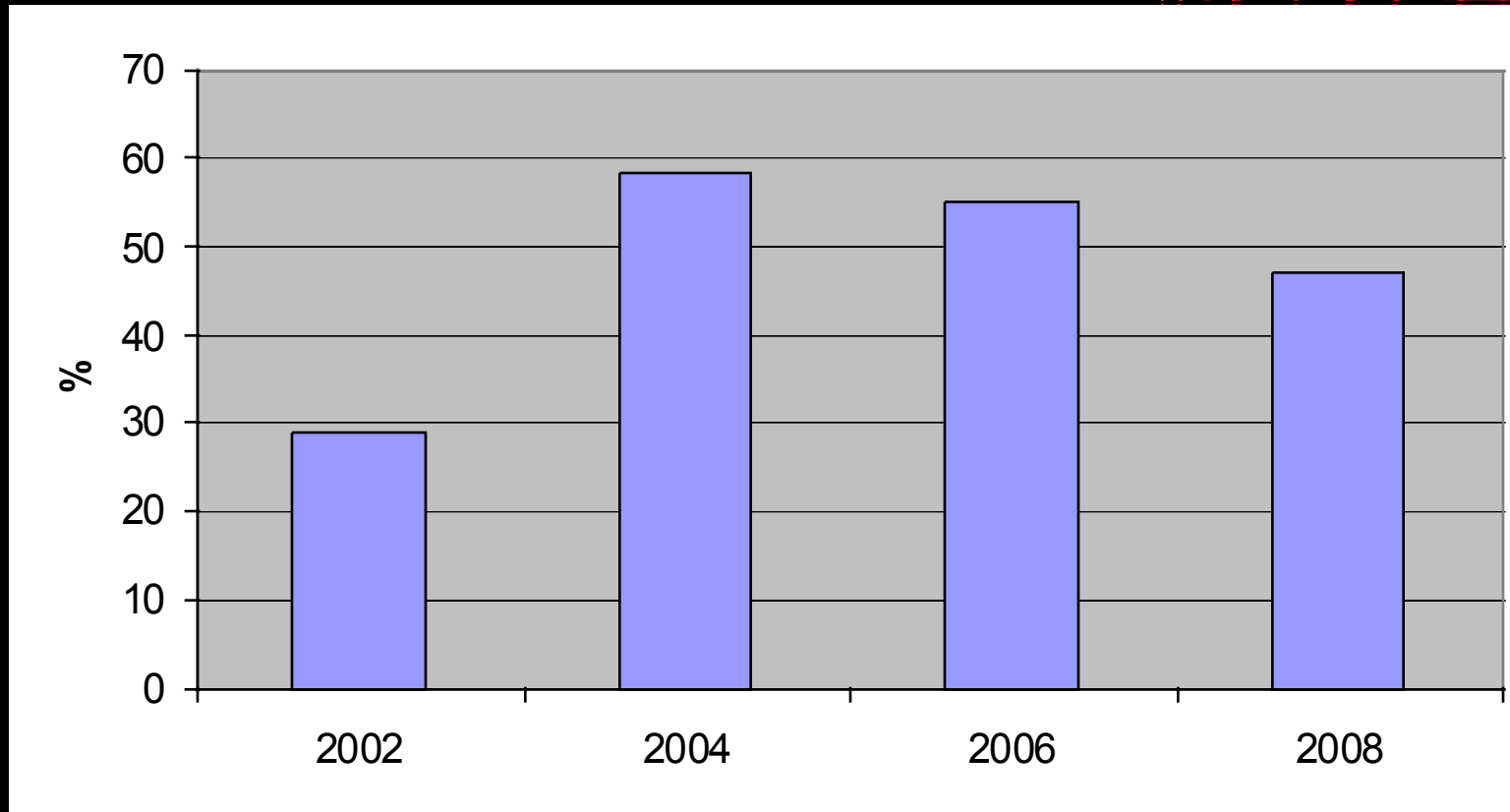


Perceptions of other problems 2002 - 2008

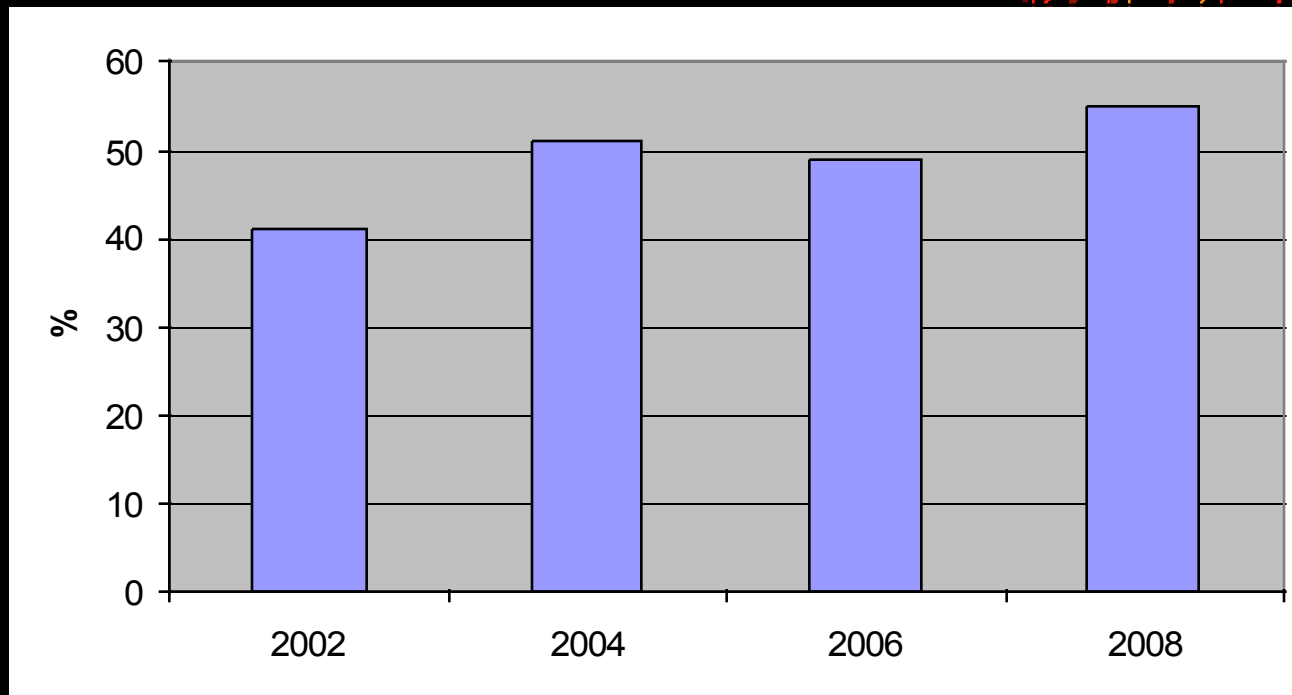
- **Litter and rubbish – 68% to 48%**
- **traffic – 54% to 39%**
- **Vandalism etc – 51% to 34%**
- **Car crime – 56% to 32%**
- **Teenagers – 55% to 42%**
- **Drugs – 69% to 48%**
- **All significant differences**



Area got much or slightly better



% trust Council a great deal or a fair amount



- **2002 – 41%**
- **2008 – 55%**



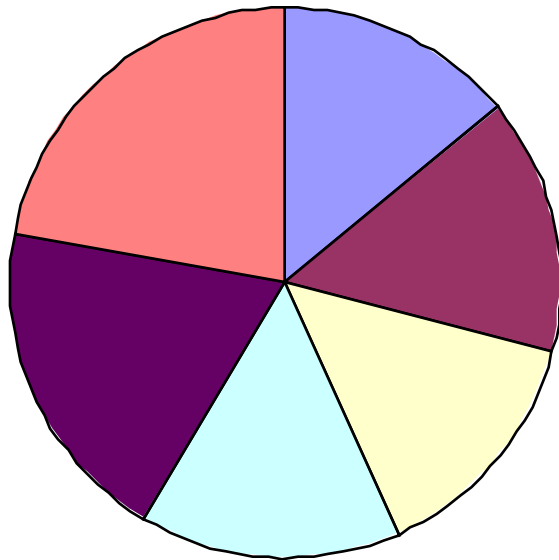
**Are these positive findings just
due to population change?**

**(Gentrification - poor
moved out, rich moved in –)**

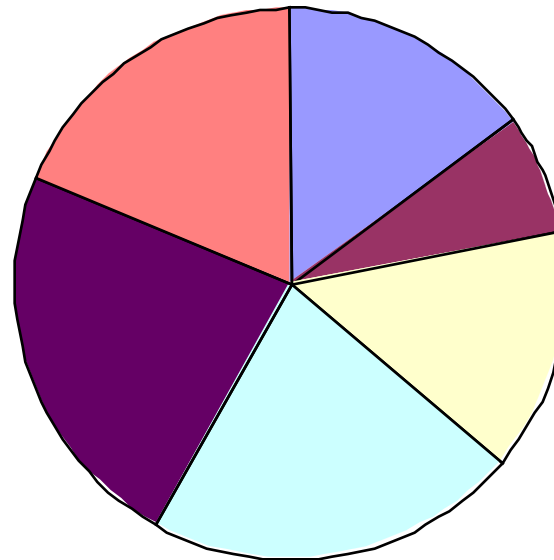
Length of time at address



2002

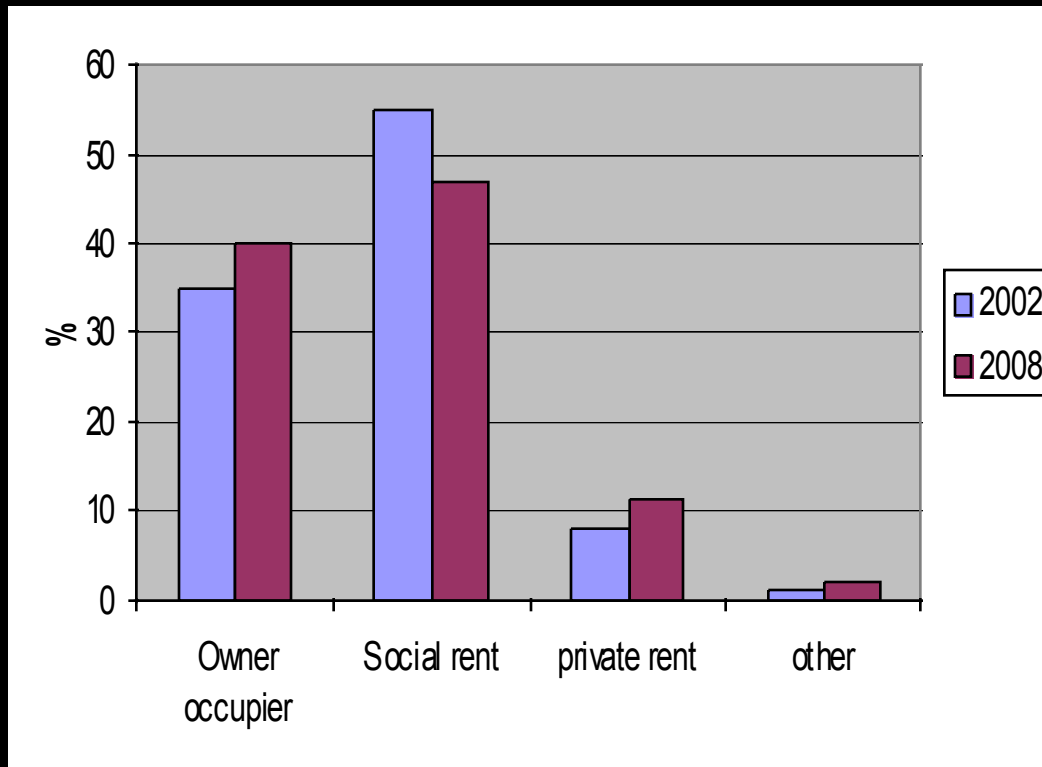


2008



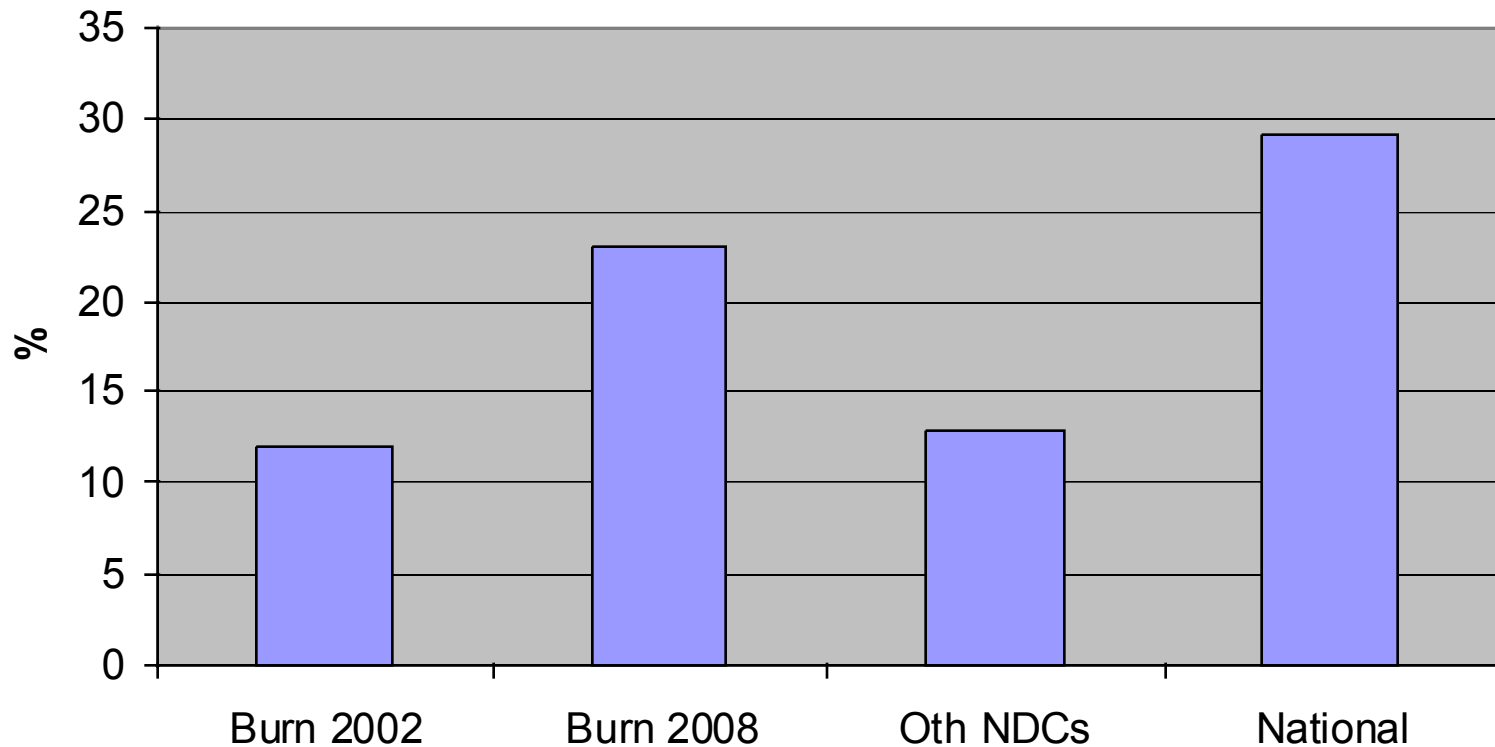
- <1 year
- 1-3 years
- 3-5 years
- 5-10 years
- 10-20 years
- >20 years

Housing tenure

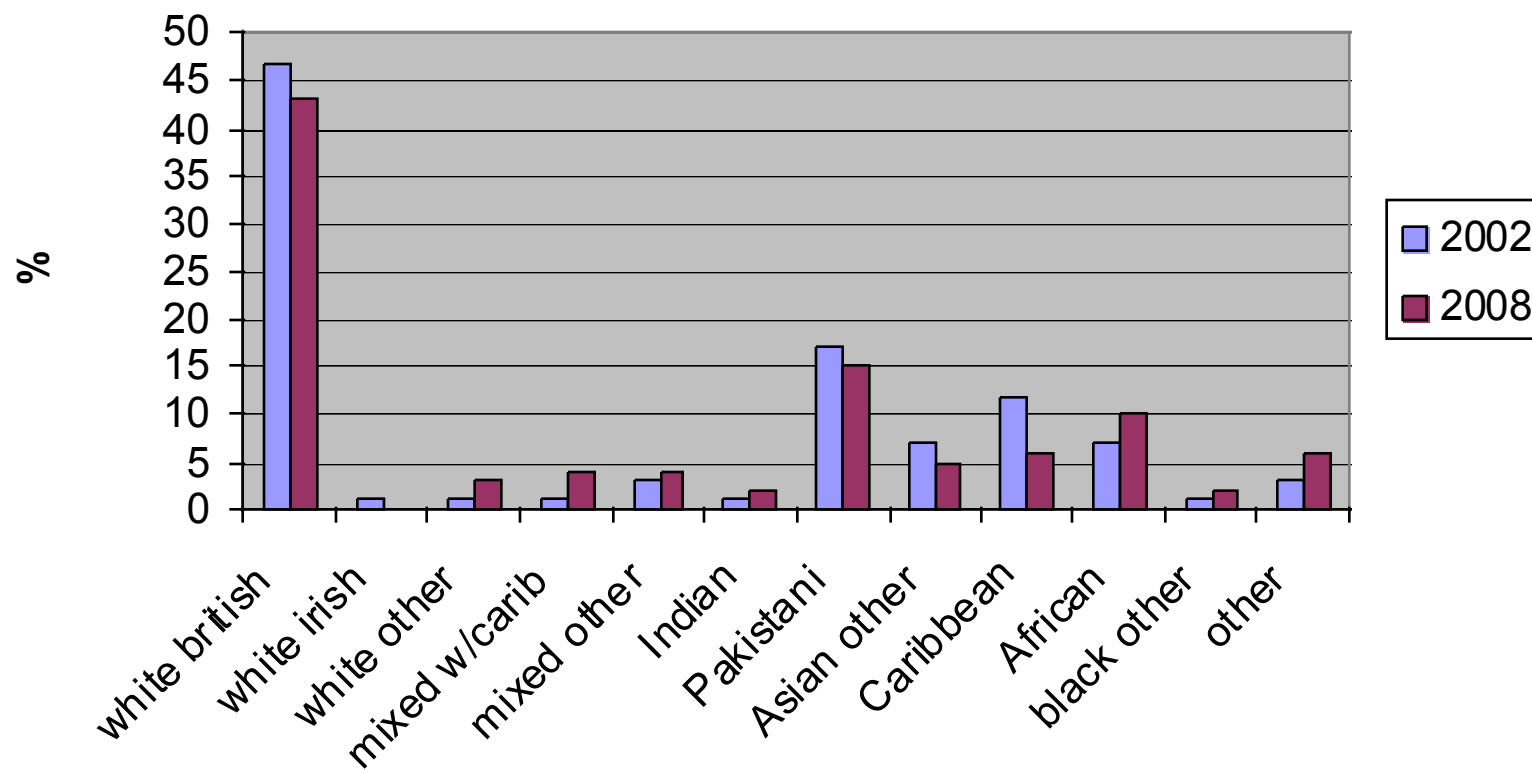


- **Owner occupier:**
 - **35% 2002,**
 - **40% 2008**
- **Social Rented**
 - **2002 – 55%**
 - **2008 – 47%**

Percentage of residents in professional, managerial or senior occupations



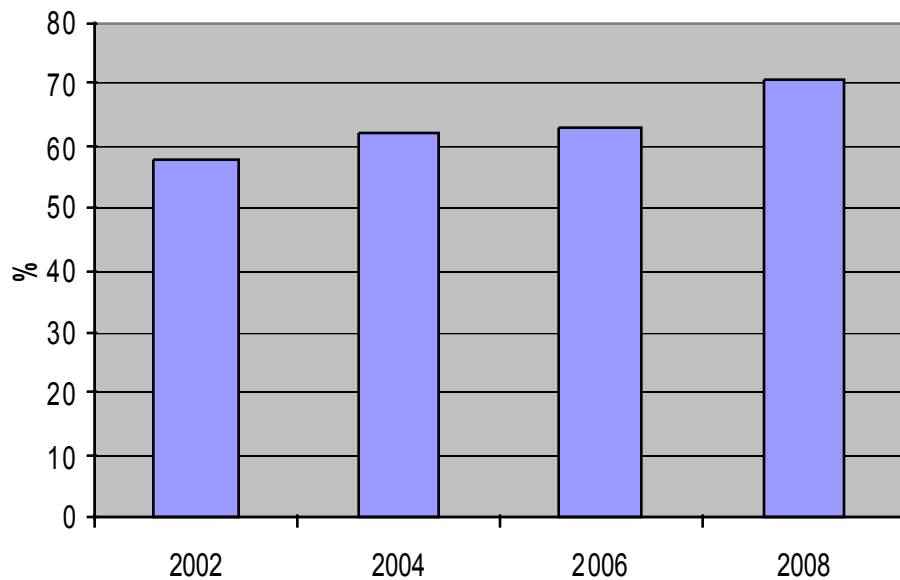
Ethnicity



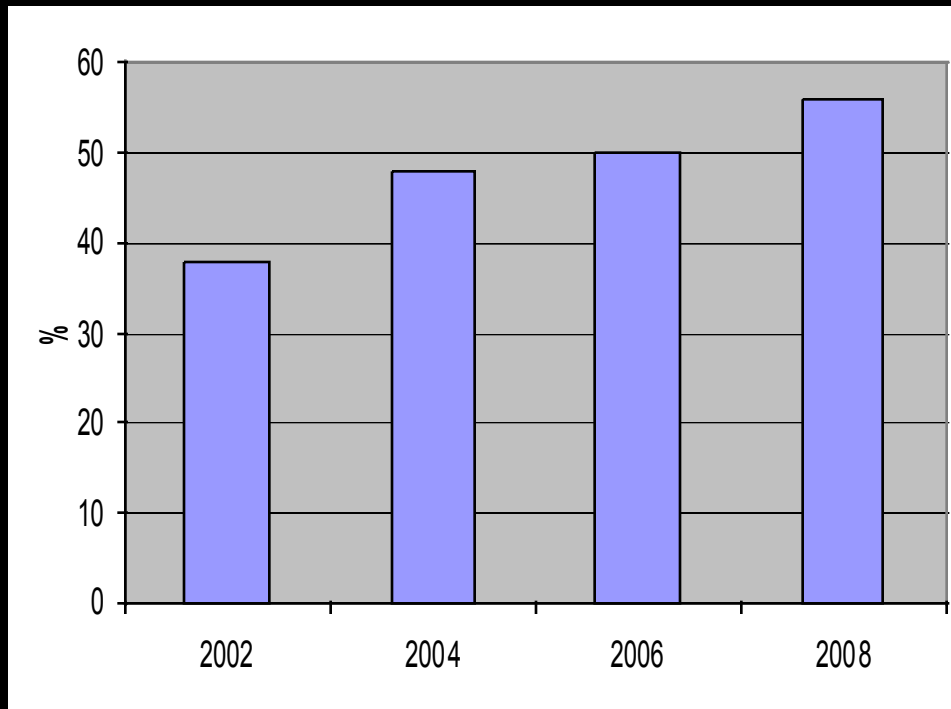
Trust in Police



- **Trust police “a great deal” or “a fair amount”**
- **2002 – 58%**
- **2008 – 71%**
- **National – 75%**

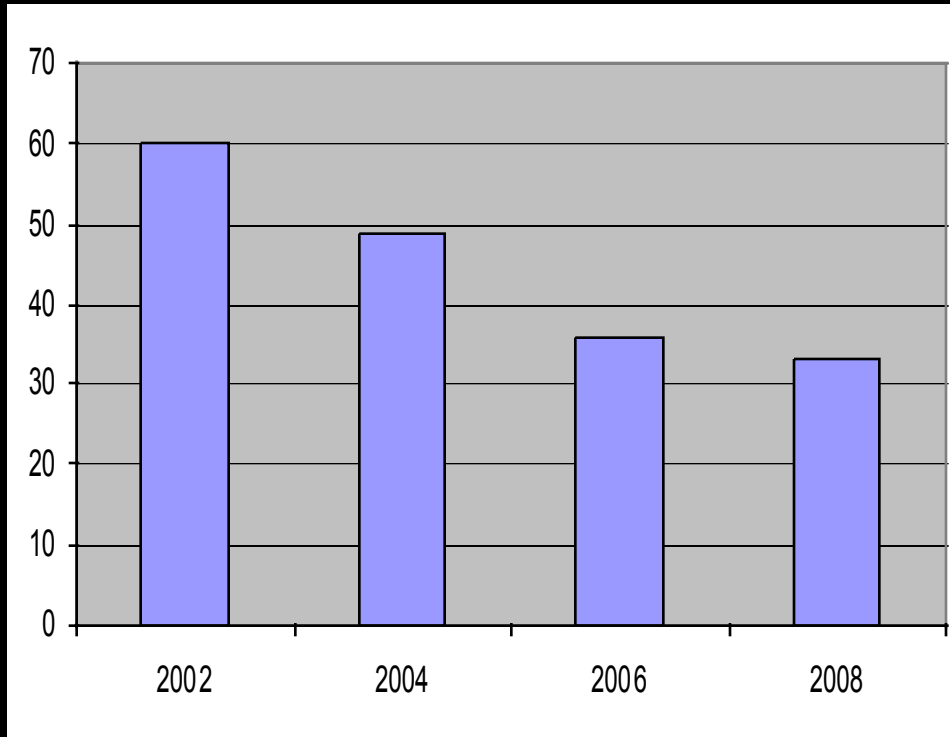


Feeling safe walking around after dark

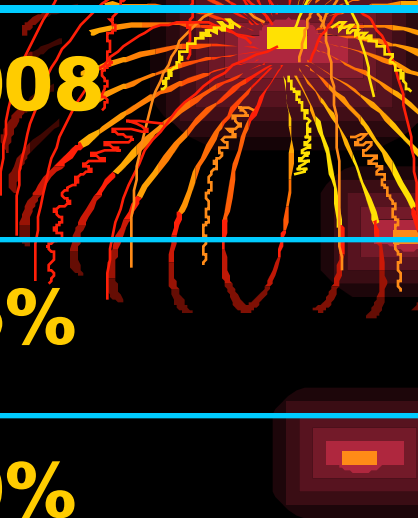


- **Feel Very or Fairly safe walking alone after dark**
- **2002 – 38%**
- **2008 – 56%**
- **National – 70%**

Worried about burglary




- **Feel Very or Fairly worried about having home broken into and something stolen**
- **2002 – 60%**
- **2008 – 33%**
- **National – 43%**



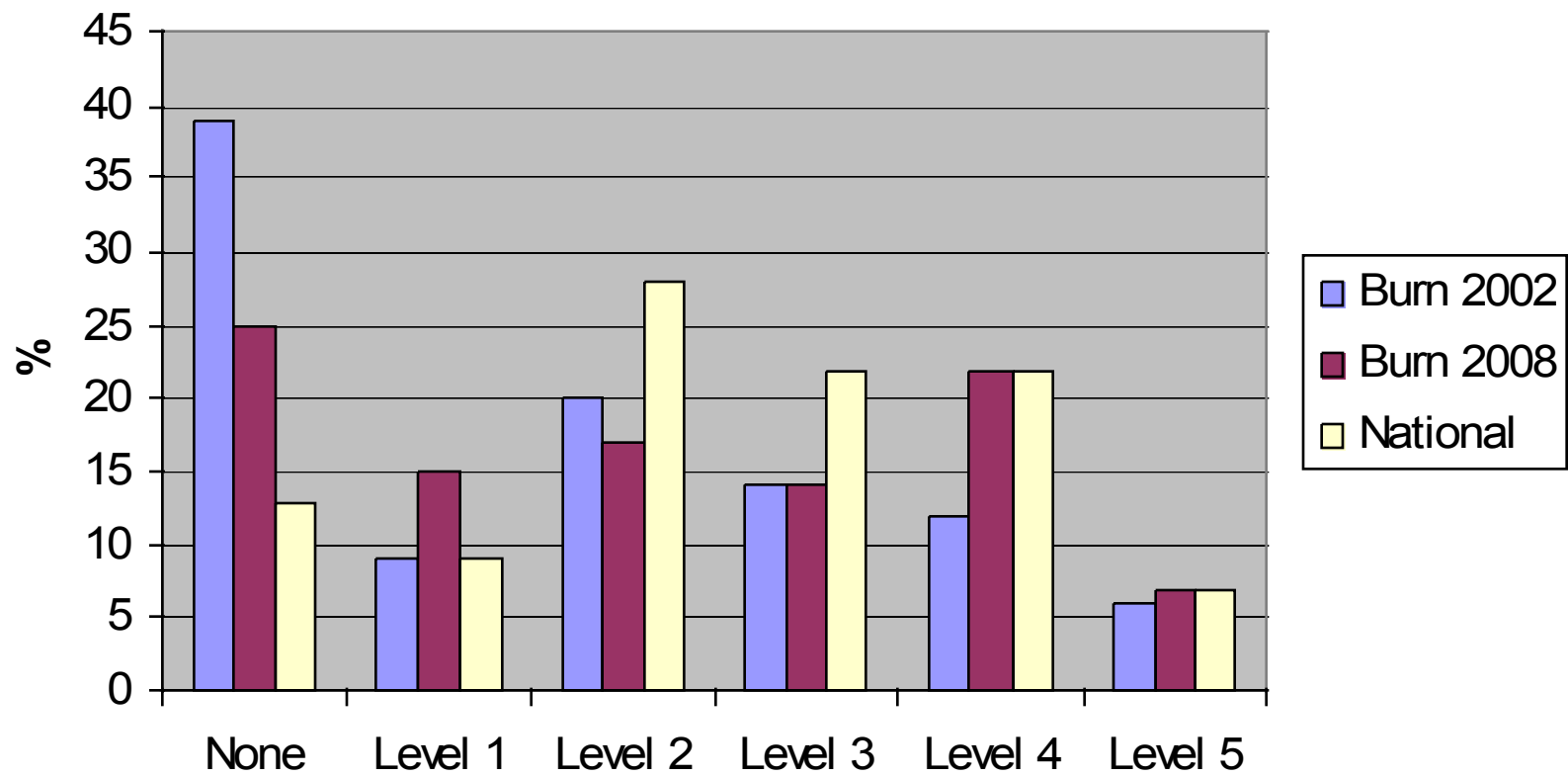
Fear of other crime	2002	2008
Being mugged	58%	35%
Having car stolen	33%	19%
Sexual assault	33%	17%
Being attacked by strangers	54%	30%
Being insulted pestered	42%	24%
Racist attack	27%	19%

Experience of crime



	2008	2008	National
Burglary	9%	5%	1.4%
Stolen outside	10%	10%	3.3%
Mugging	5%	1%	1.7%
Violence	5%	4%	2.6%
Damage outside	13%	11%	-
Threat violence	8%	6%	-
Racial harras't	6%	5%	-

Qualifications - 1

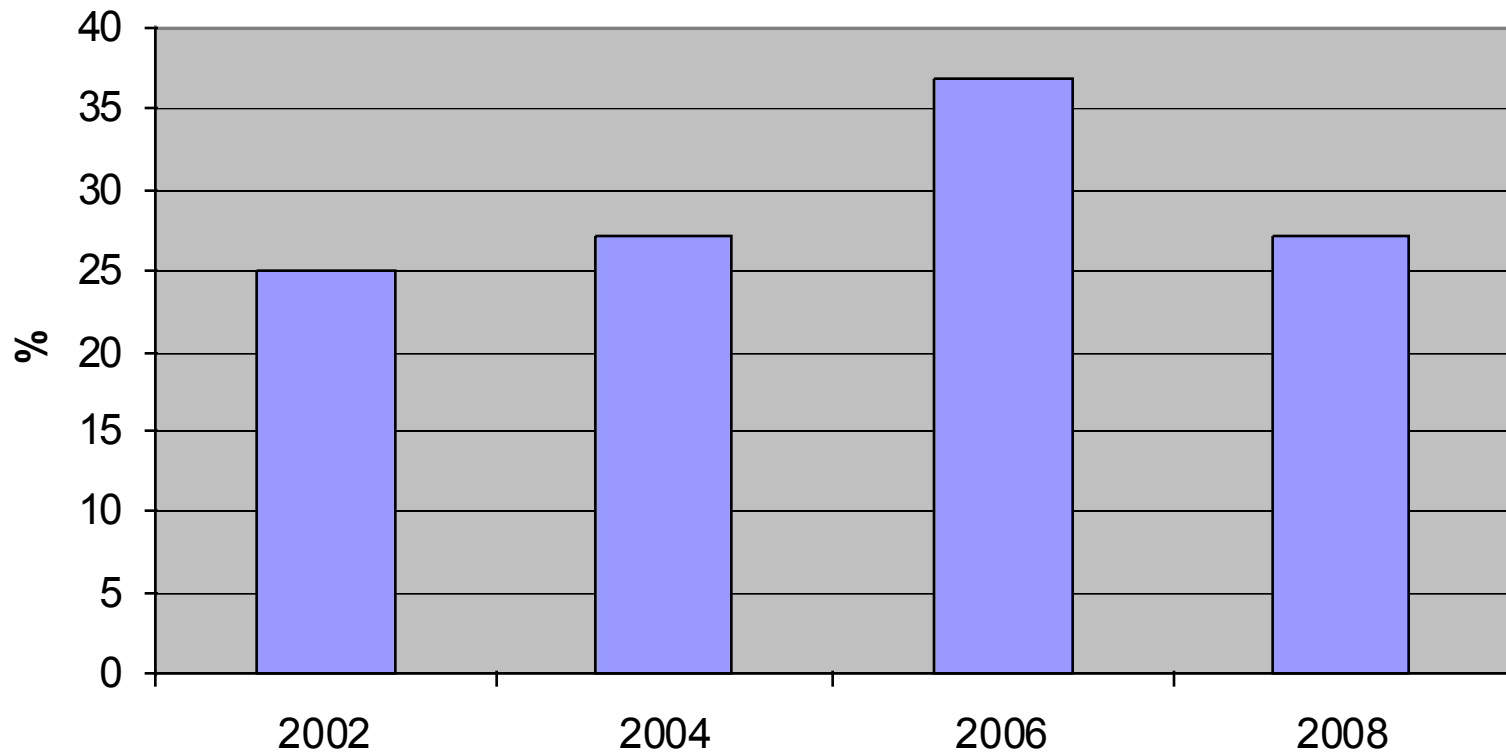


Qualifications - 2

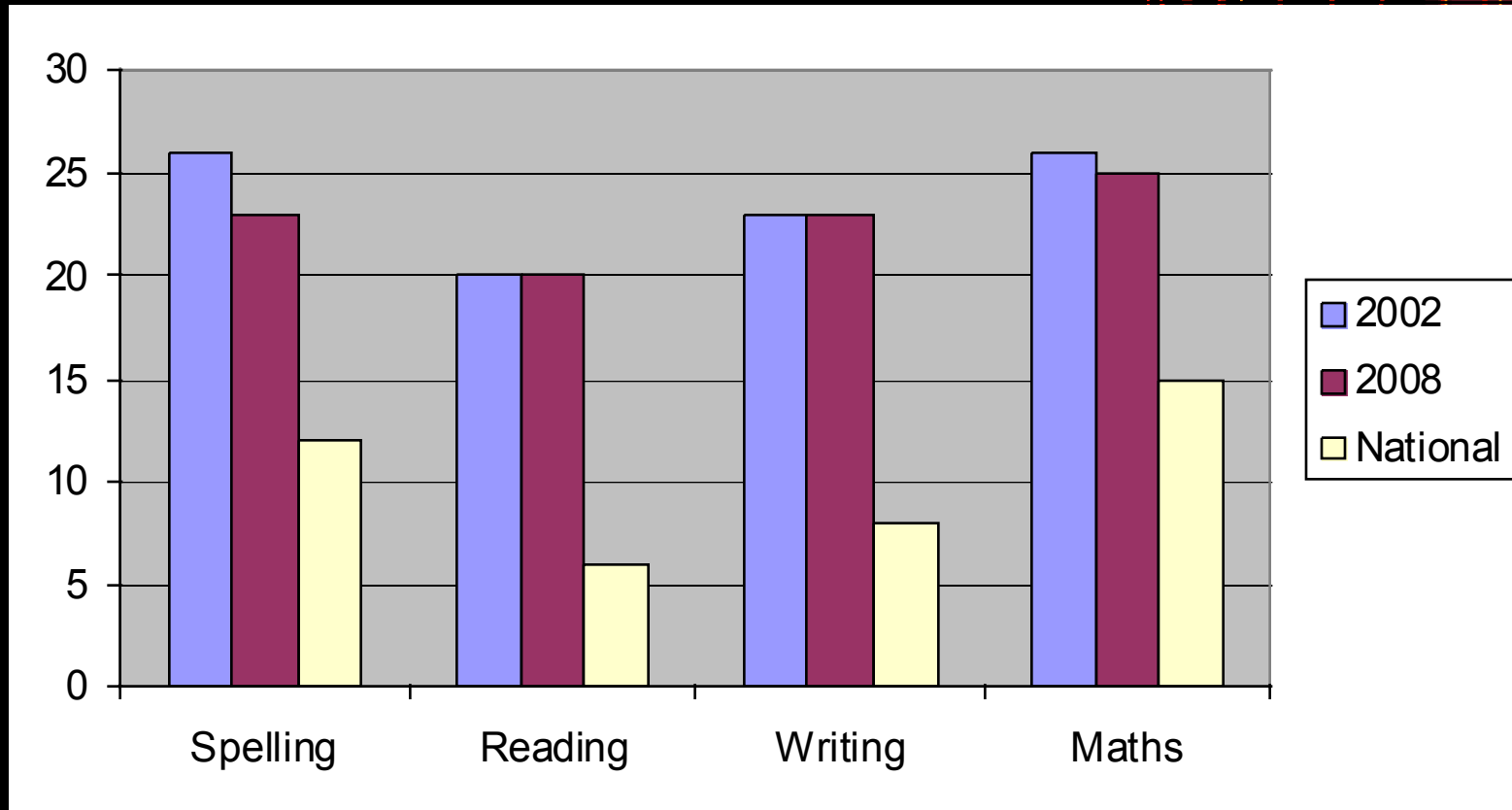


- **No quals**
- **2002 – 39%**
- **2008 – 25%**
- **National – 13%**
- **Level 4+ quals**
- **2002 – 18%**
- **2008 – 29%**
- **National – 29%**

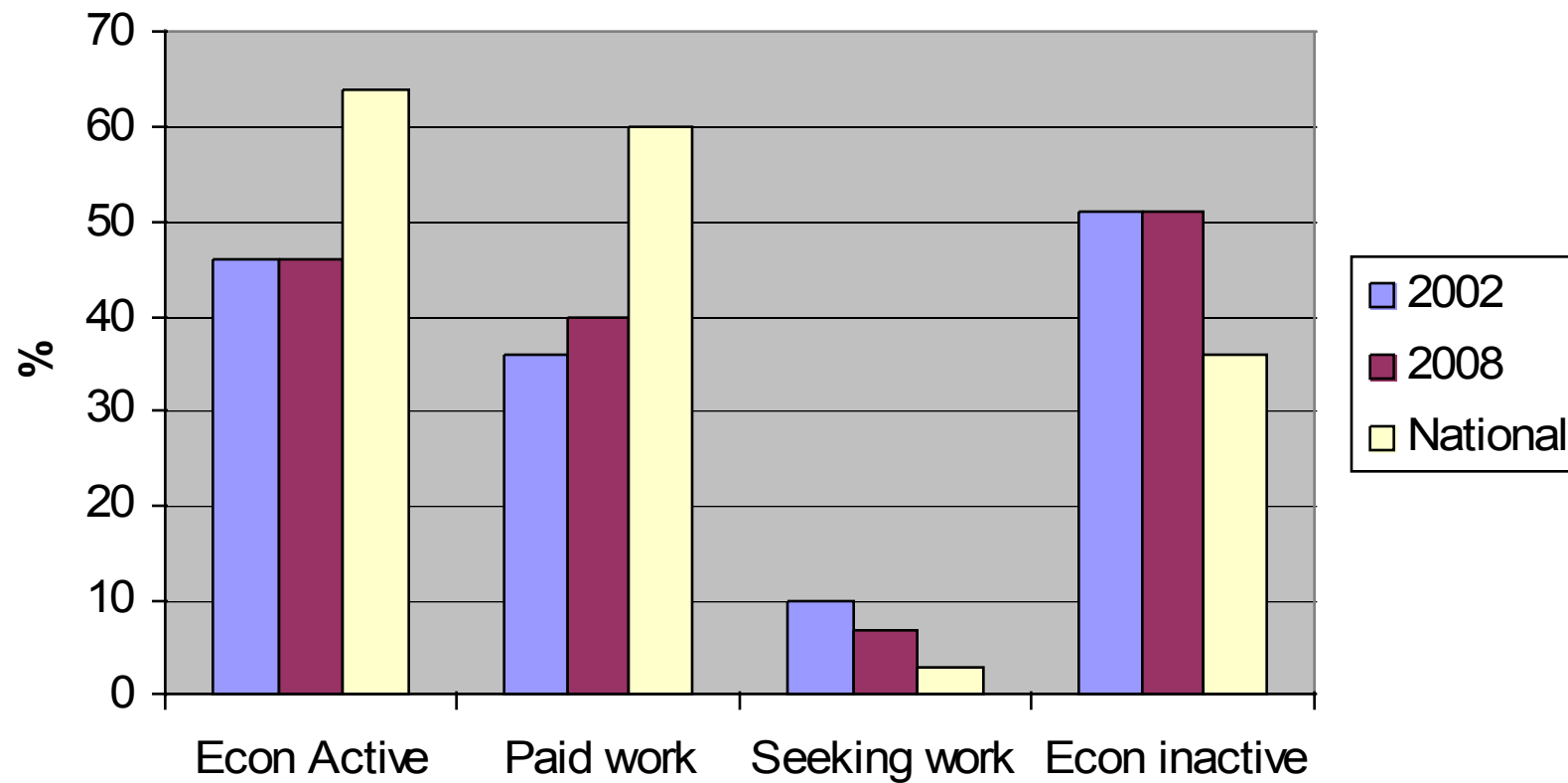
% Taking Part in Education and training in last year



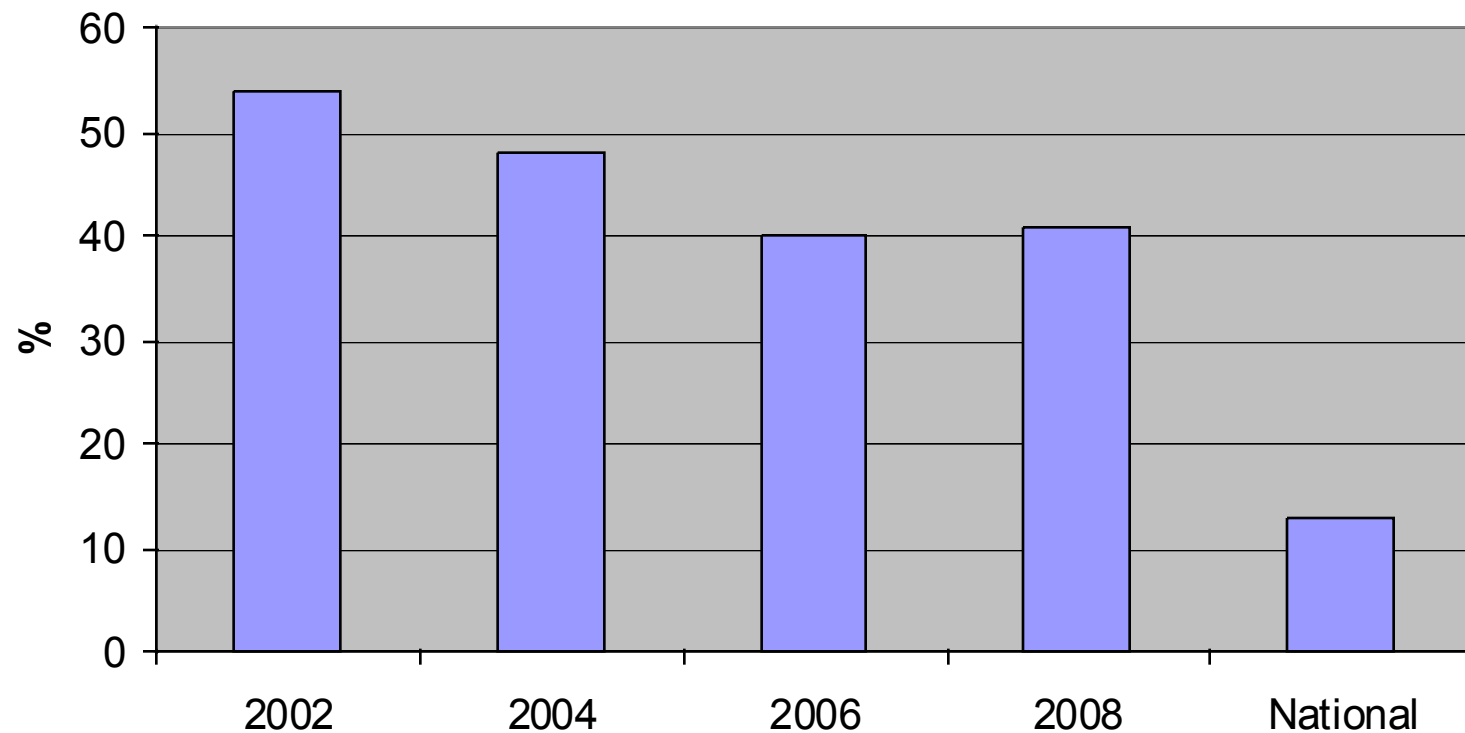
% thinking they need to improve basic skills



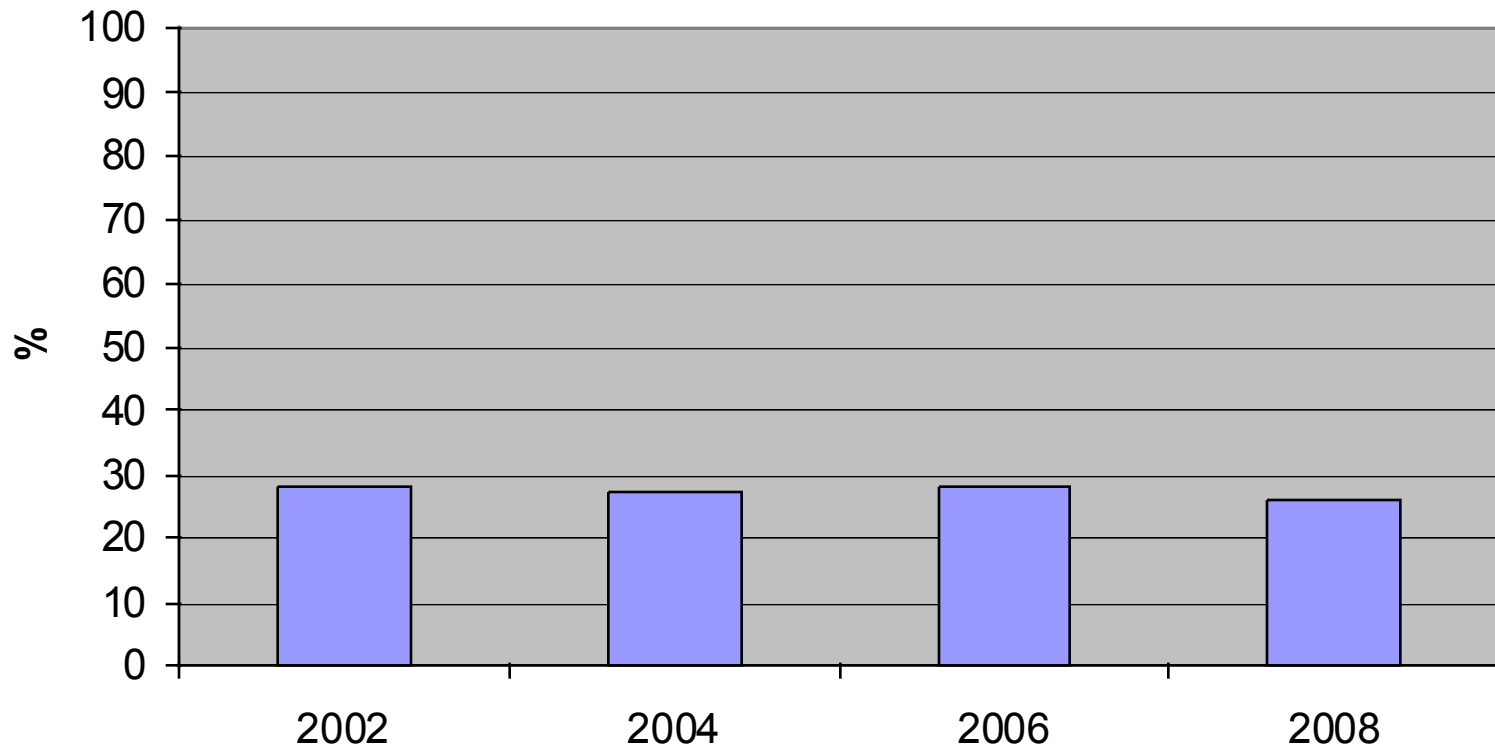
Work Status



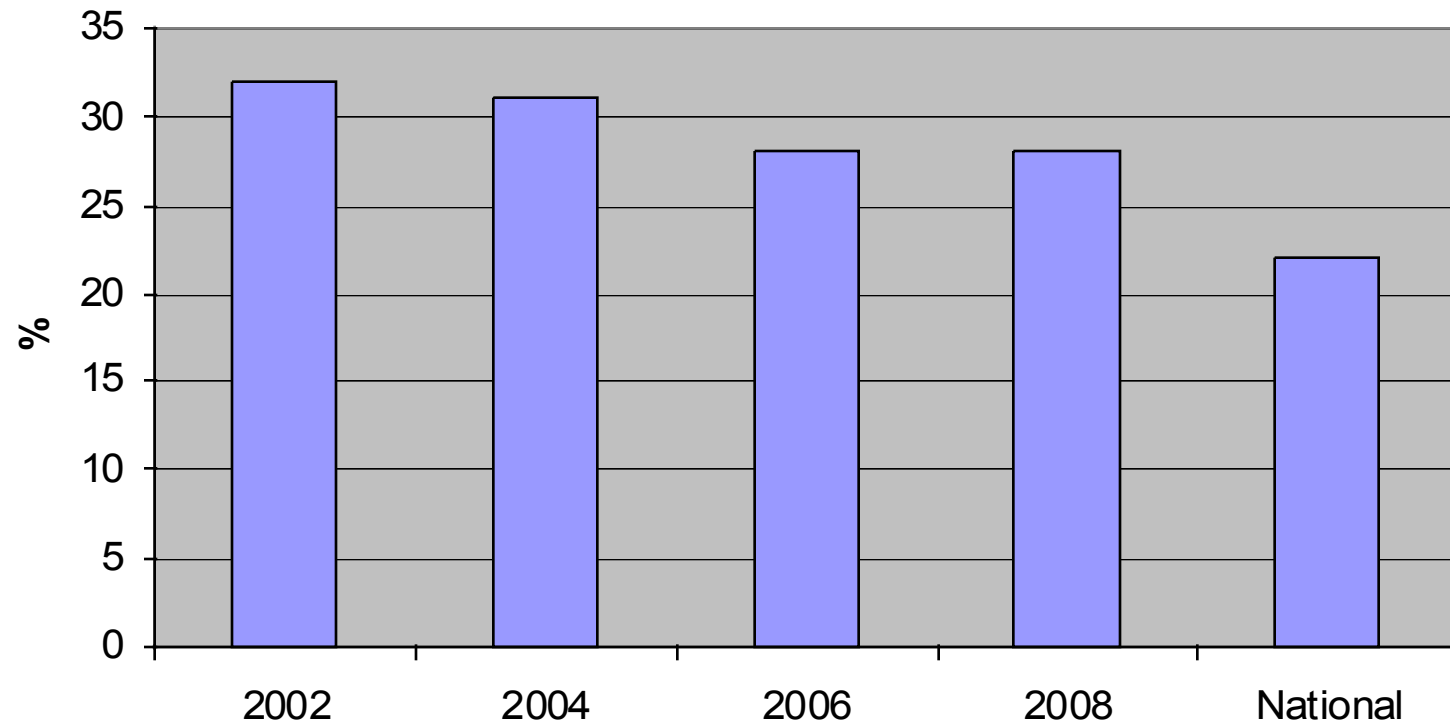
Poverty – households with gross income less than £10,400



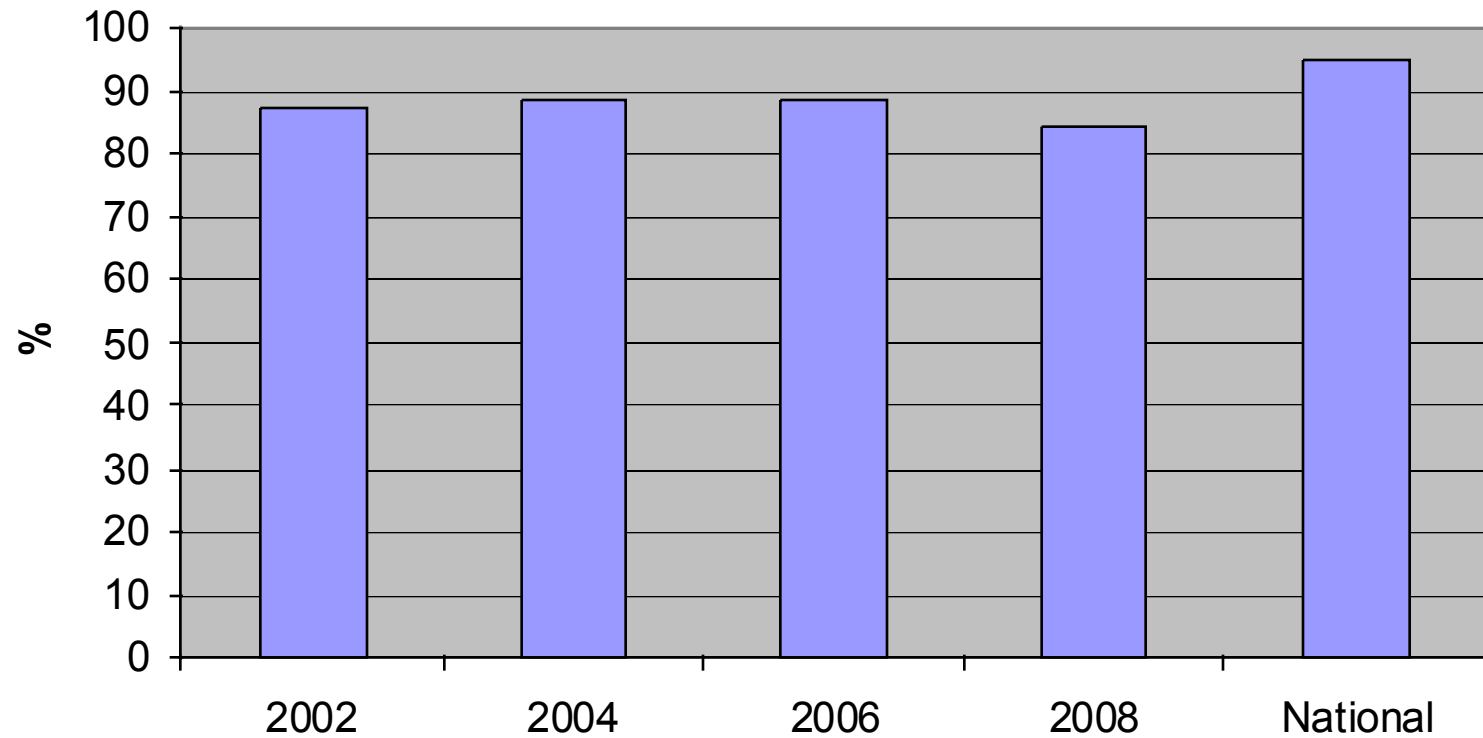
Eating fruit veg 5+ times a week



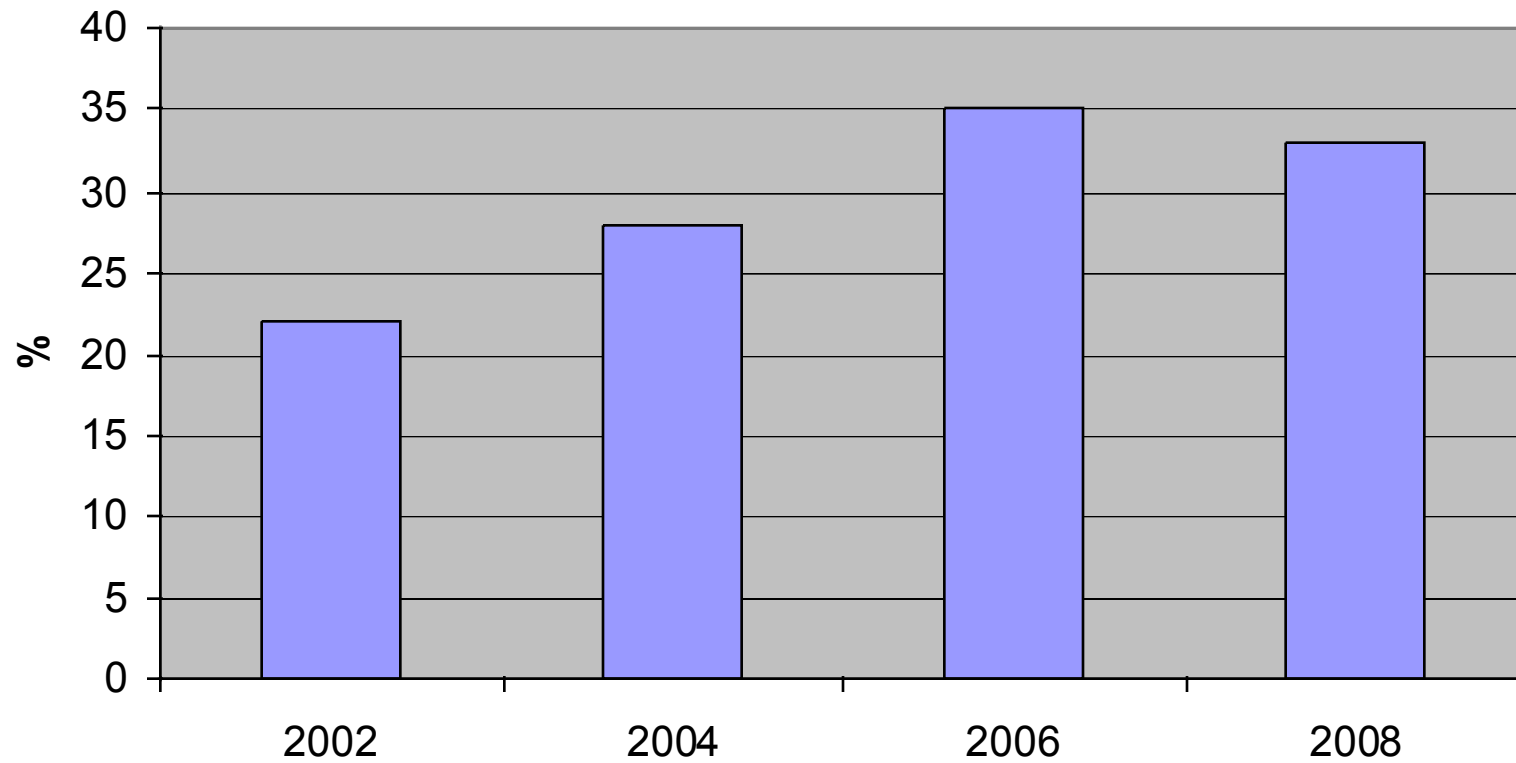
Smoking



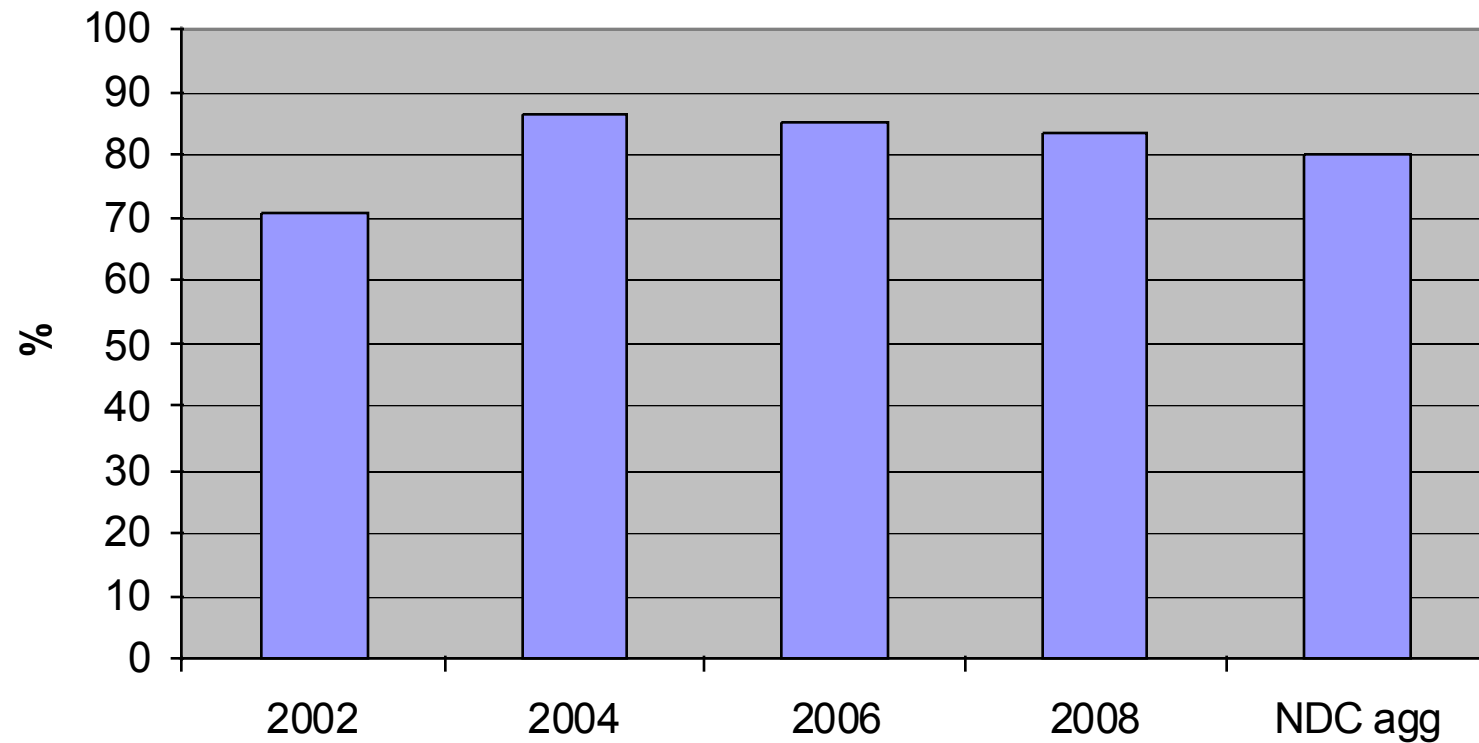
Activity > 20 mins day



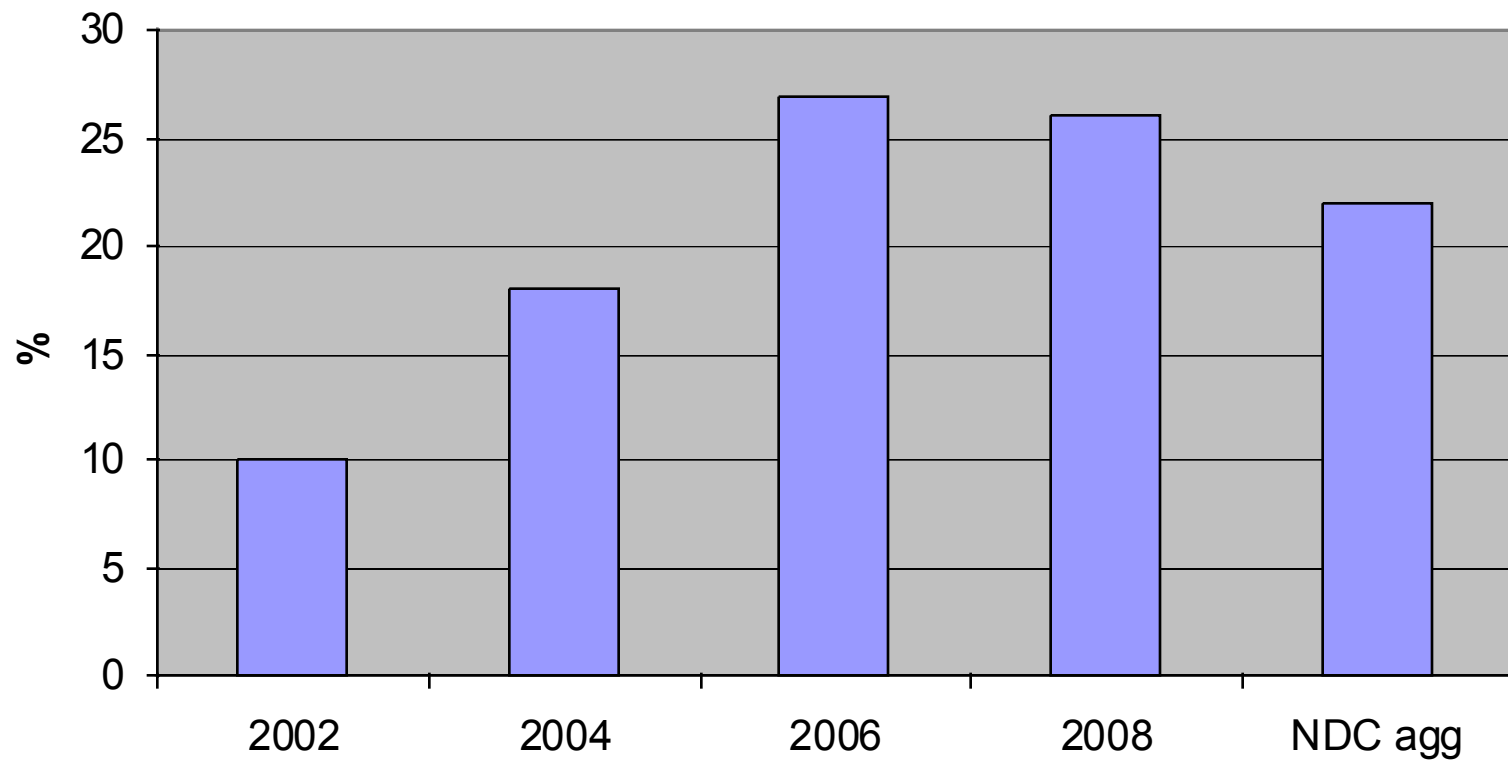
Fairly or very difficult to see GP



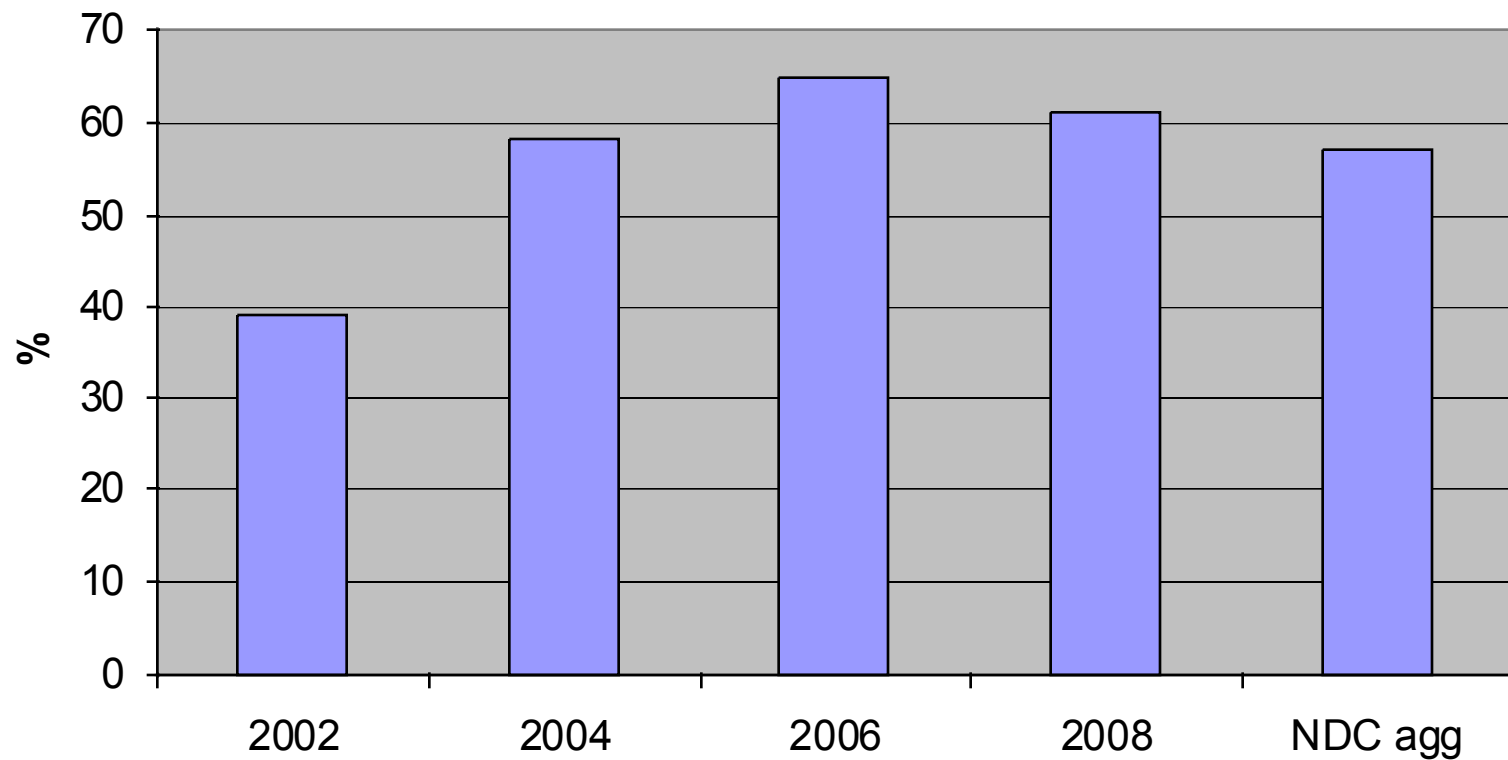
Heard of BNDfc



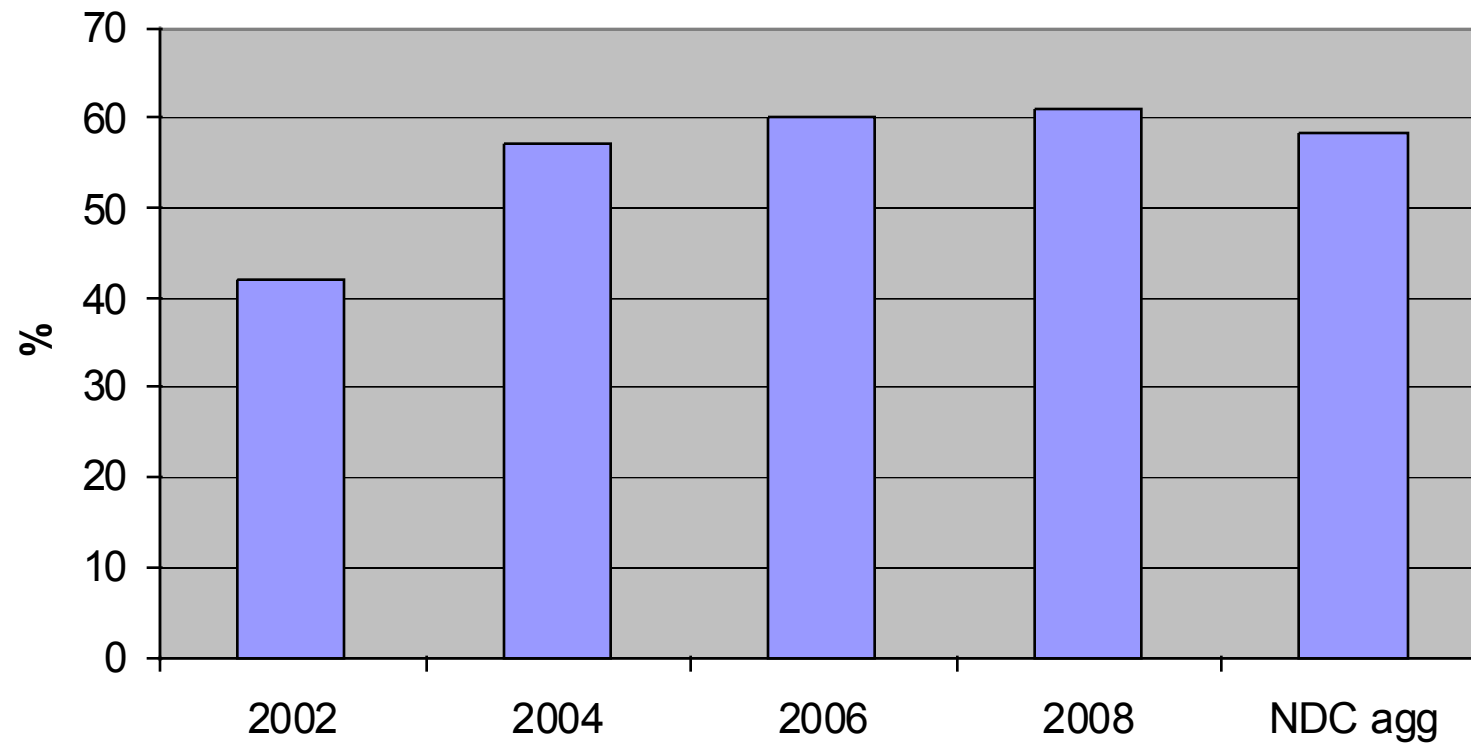
Involved BNDfC Activities last 2 years



**BNDfC activities have
improved area as place to live
a great deal or fair amount**



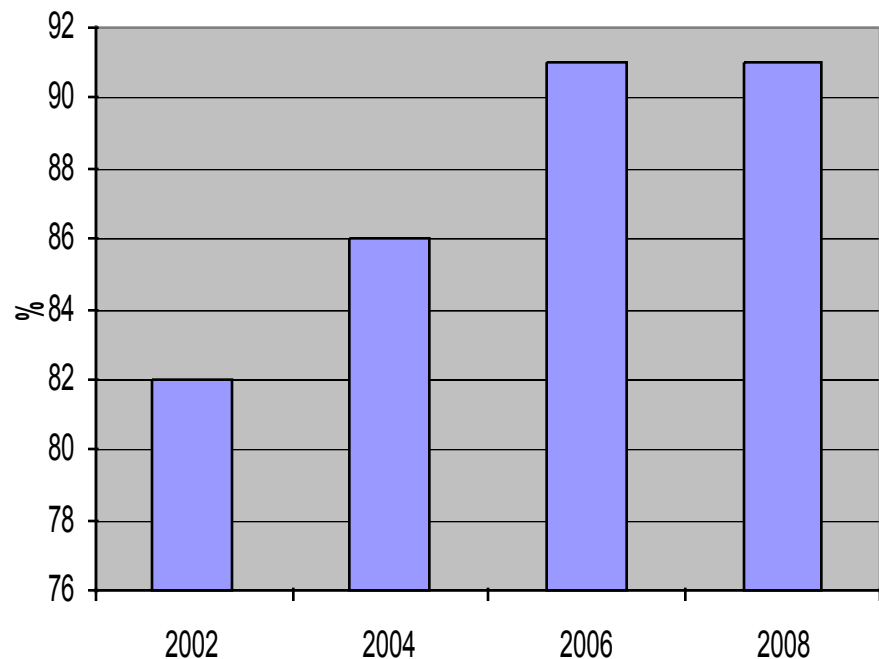
Trust BNDfc



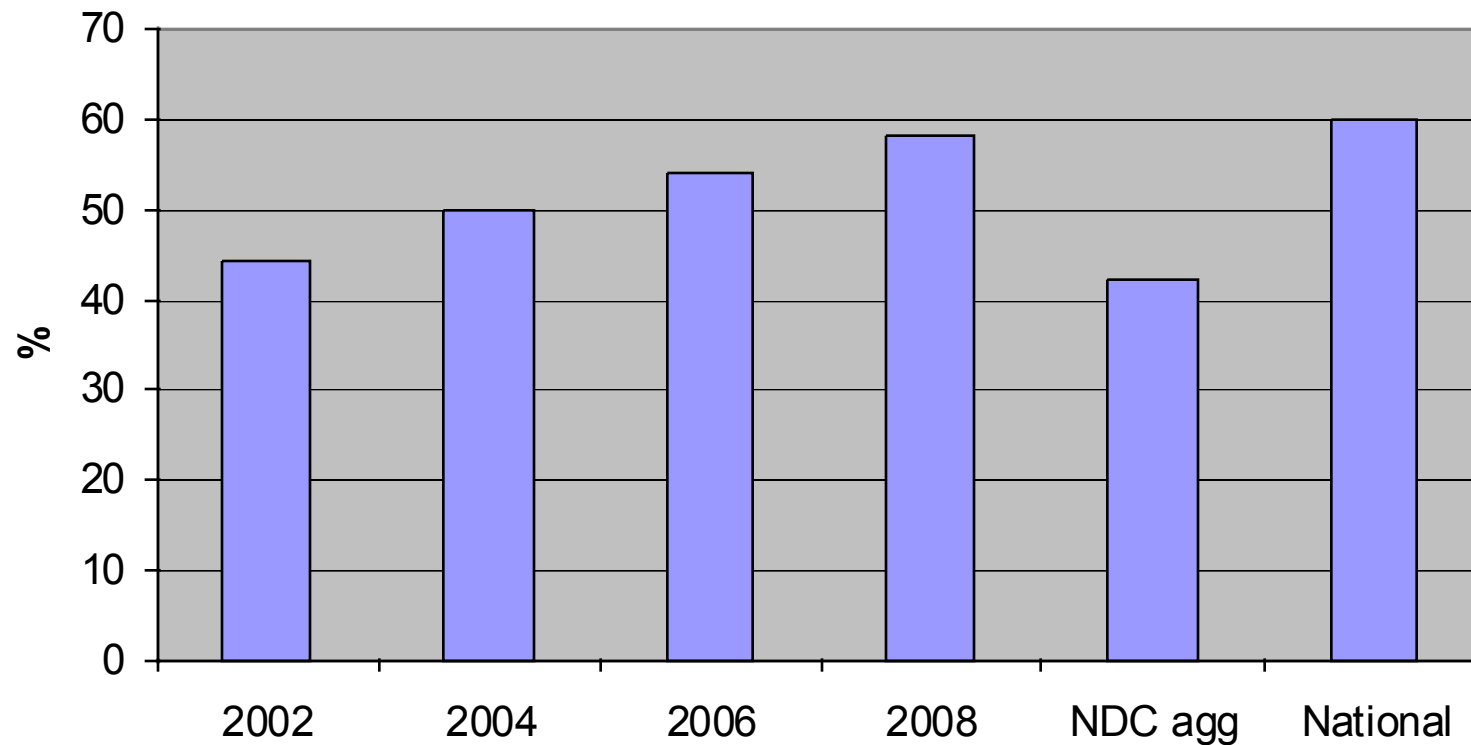
% describe people friendly or very friendly



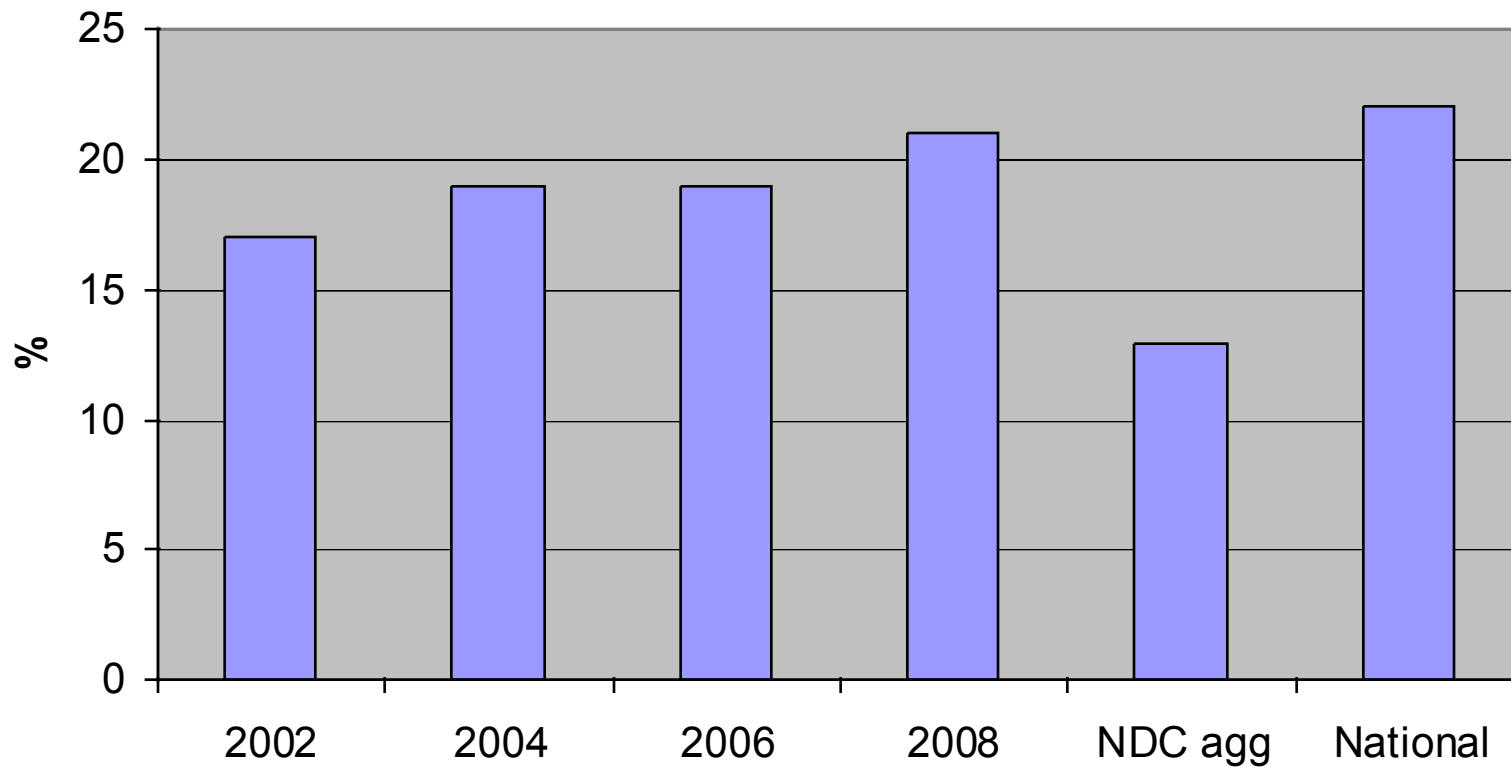
- **Now similar to national figures (90%)**
- **42% describe B'greave peeps as 'very friendly' compared to 31% nationally**



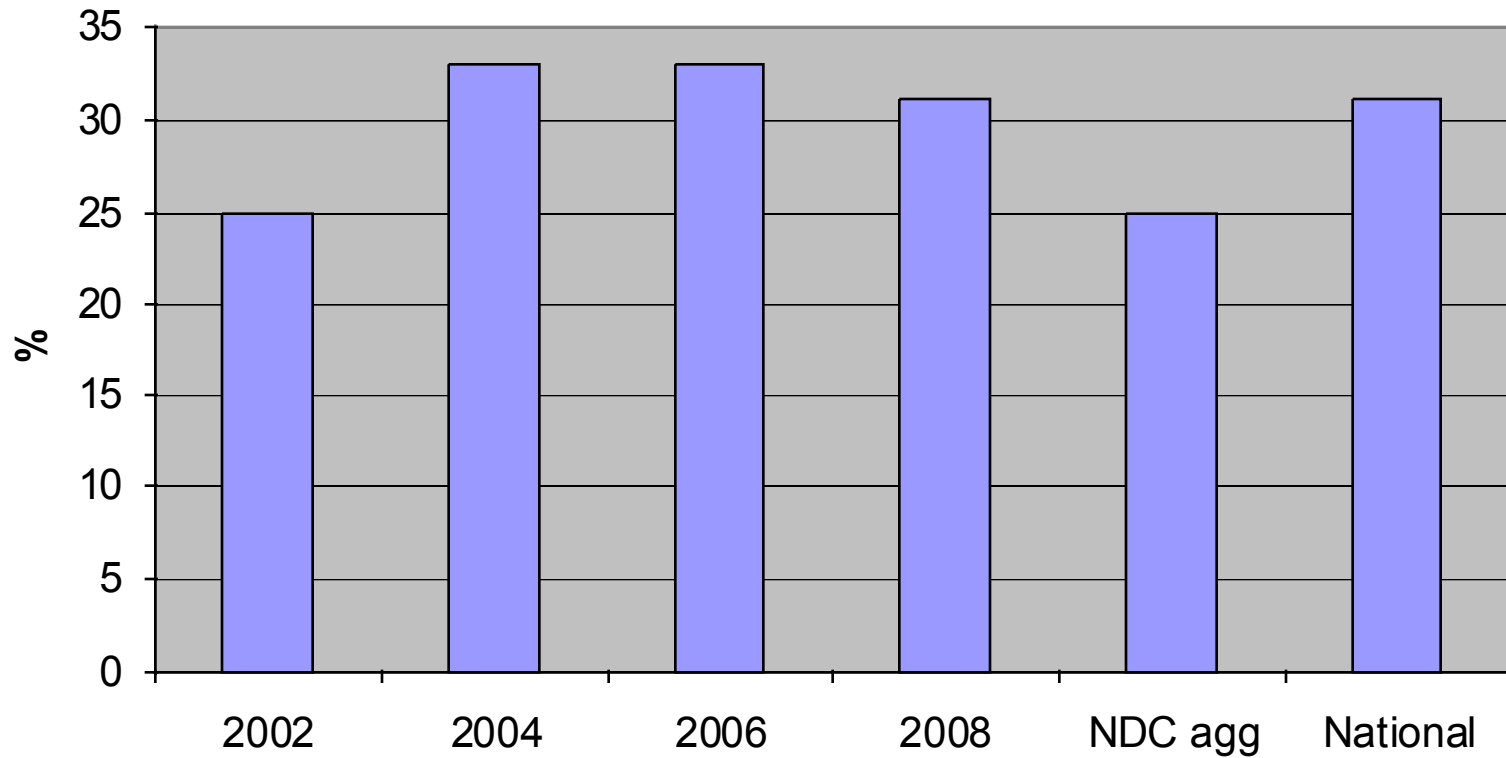
Feel part of local community a great deal or fair amount



Volunteered last 3 years



Feel can influence decisions



Burngreave a place where people from different backgrounds get on well together

