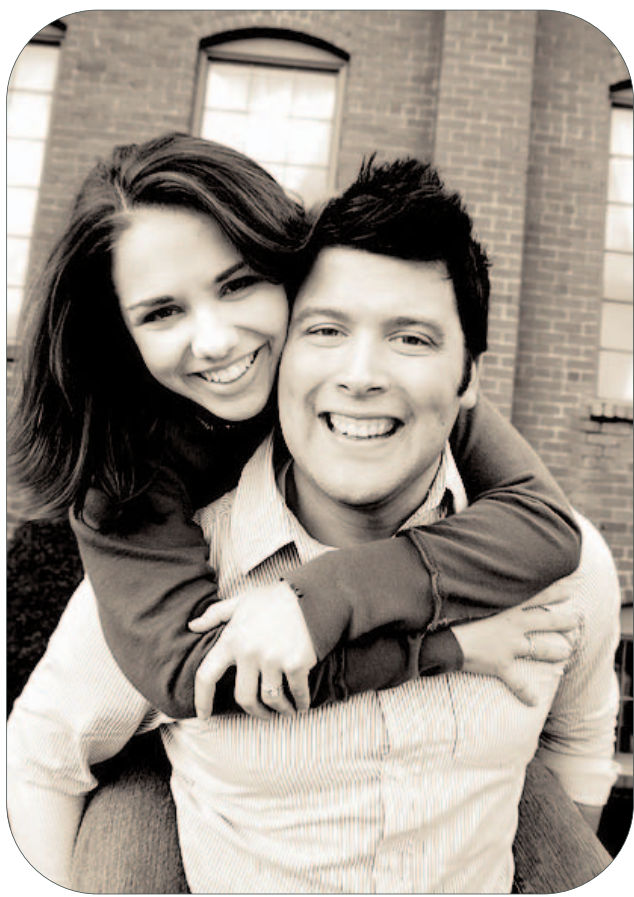


# 21st Century terrace

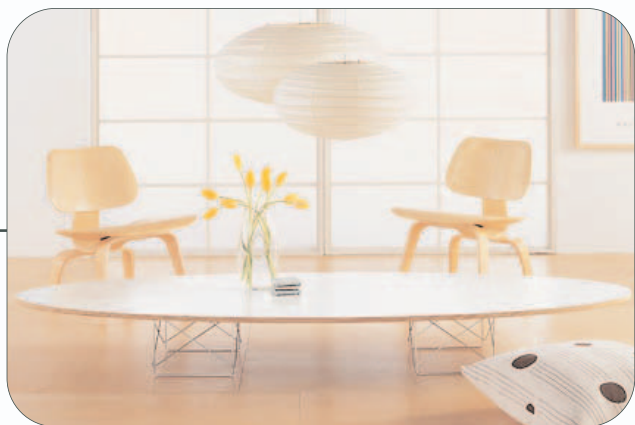
The residents of the 21st Century terrace are a **young urban couple** working in the **creative industries** sector. They want to live and work near the heart of the city but cannot afford city centre apartments or office space. The C21st terrace gives them the possibility to create an **open plan living and working** environment from which their young design business can grow. They have created an inward looking **'cocoon'** space, in which to explore and showcase their design ideas and retreat into, if they wish, from the outside world. **Light** is introduced from above into a dynamic open plan space, where the boundaries between living, work and play are blurred.



storage wall



study balcony



living area



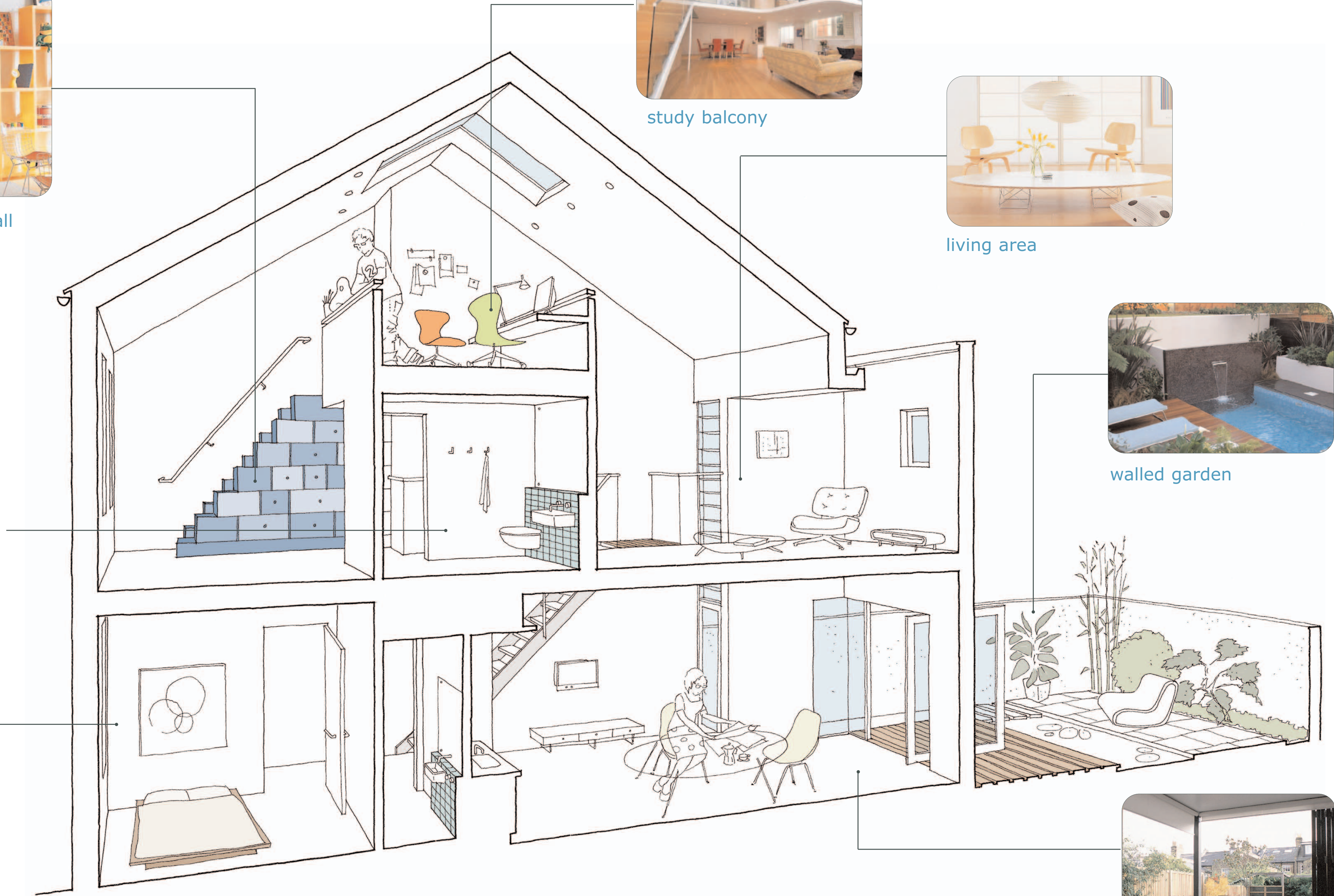
walled garden



bathroom



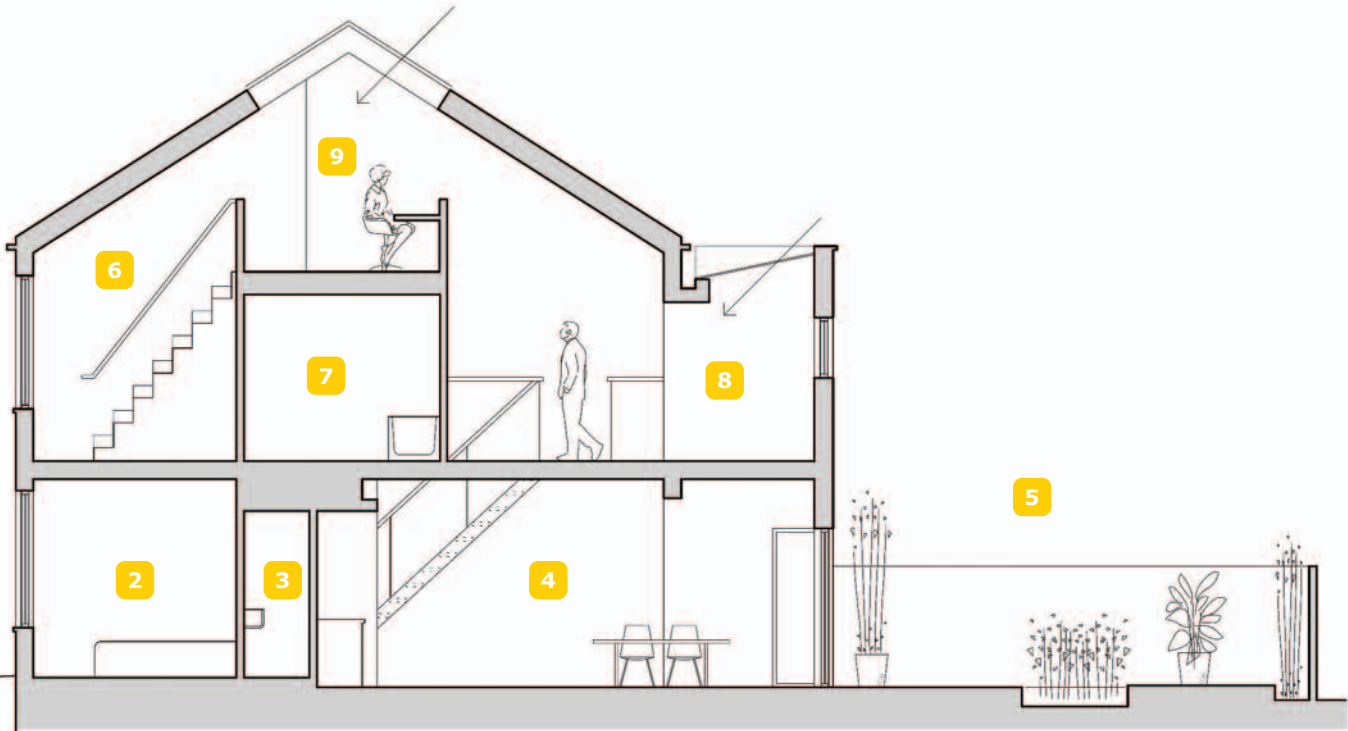
bedroom



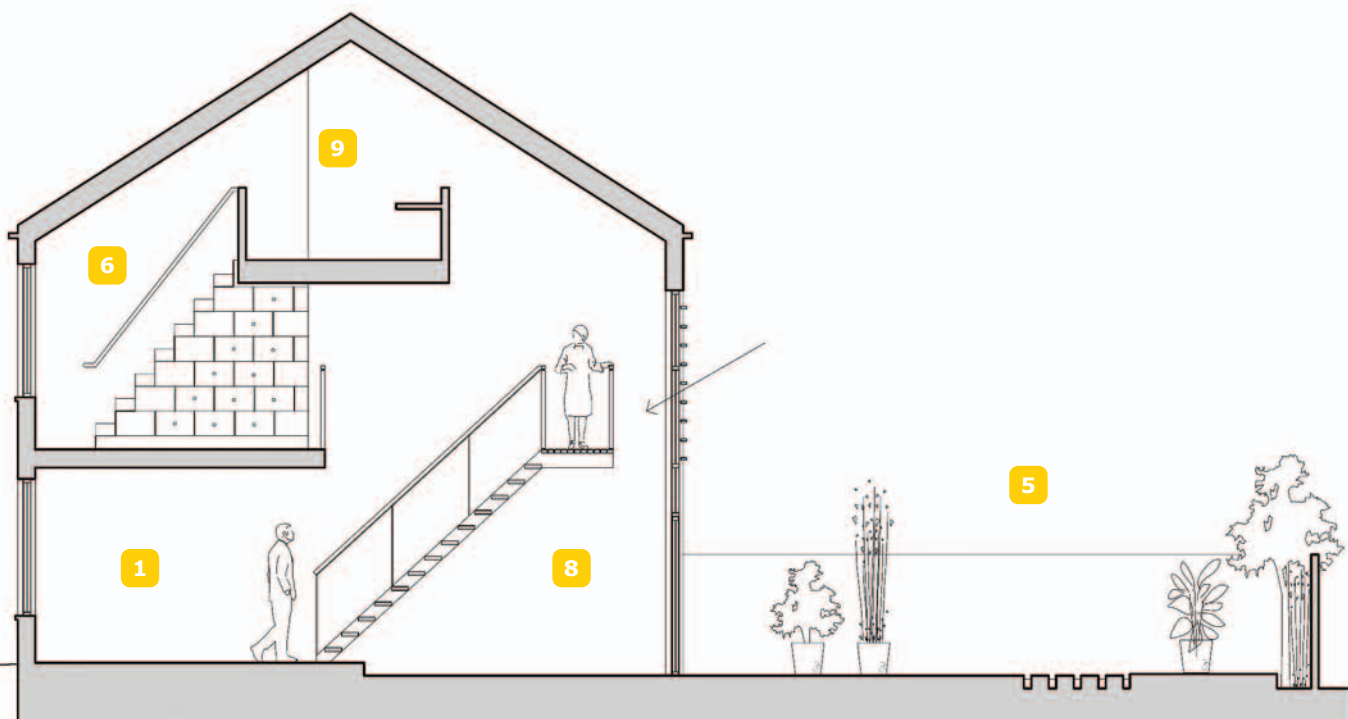
The different spaces are interconnected vertically and horizontally, culminating in the **studio gallery** at the top of the house. The only 'room' is the ground floor **guest room** for visitors. The bathroom, kitchen and storage space are designed as compact **'modules'** or 'furniture' inserted into the open plan design. The main stair is a lightweight, open tread construction allowing **light** to filter down to below. The alternating tread stair up to the studio gallery is made from timber, and doubles as a **storage wall**. Outside the idea of the inward looking sanctuary continues to the **walled garden**, where planting, water, decking and paving create their own ideal and carefully designed environment.



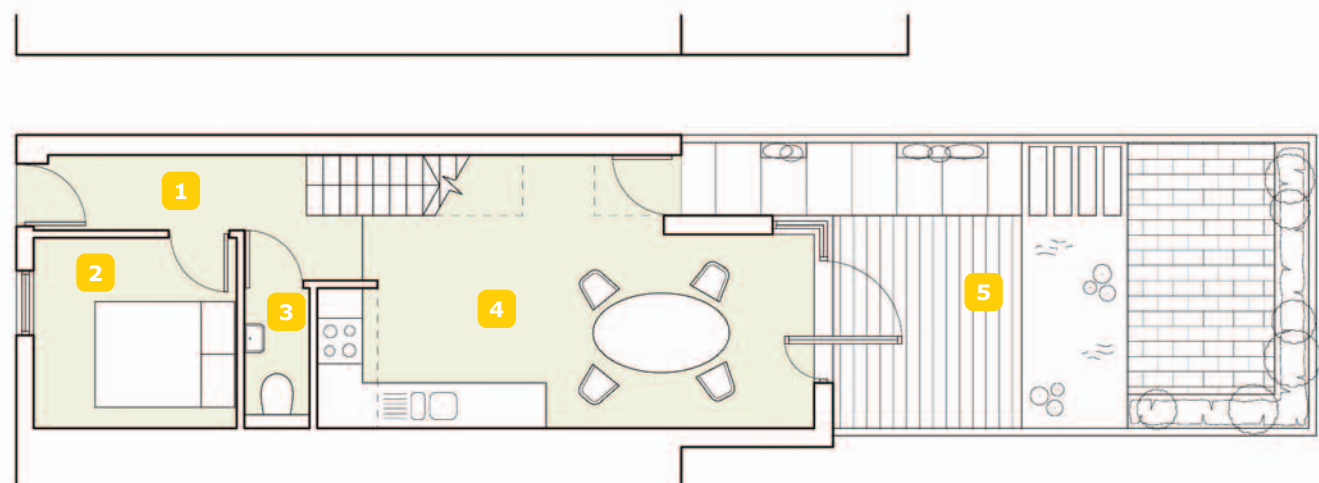
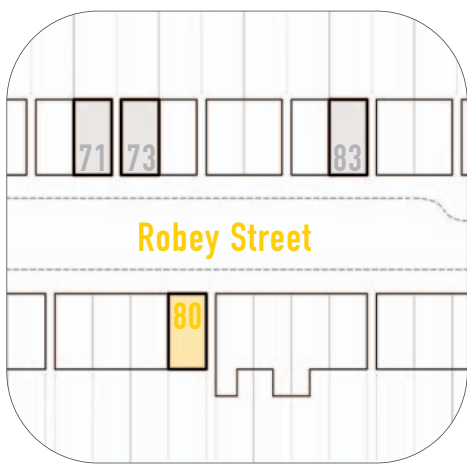
flexible dining



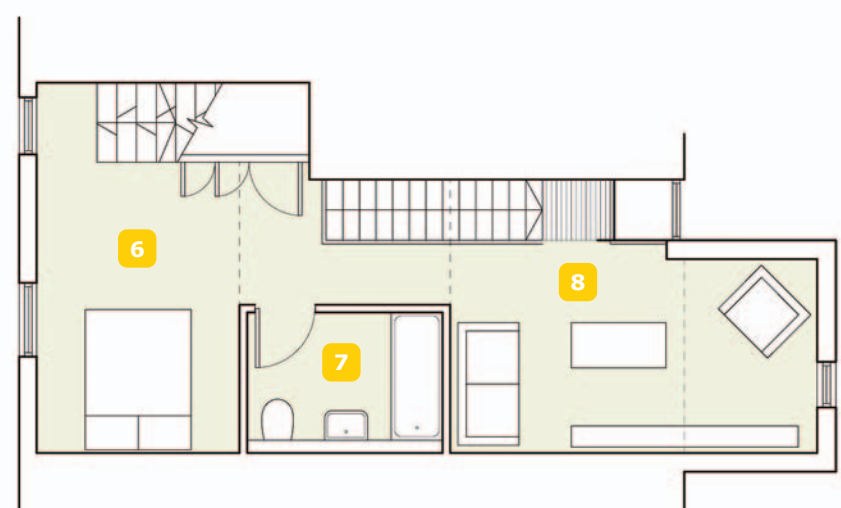
long section through kitchen



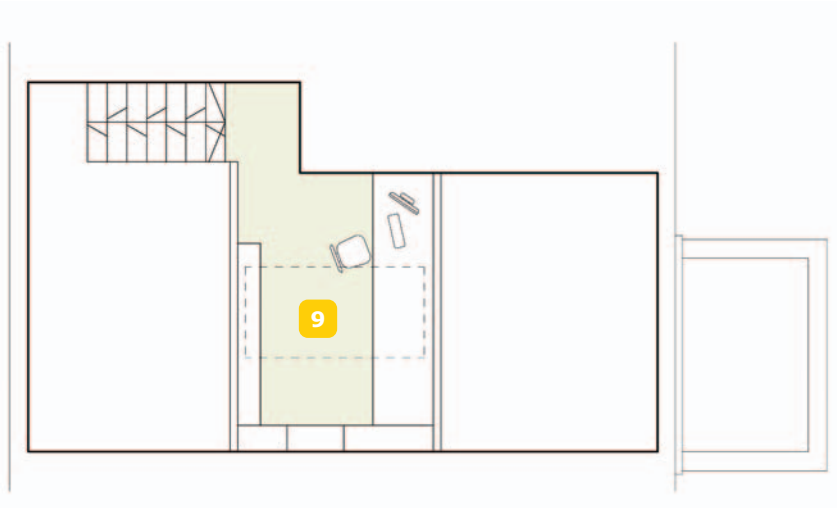
long section through stairs



ground floor plan



first floor plan



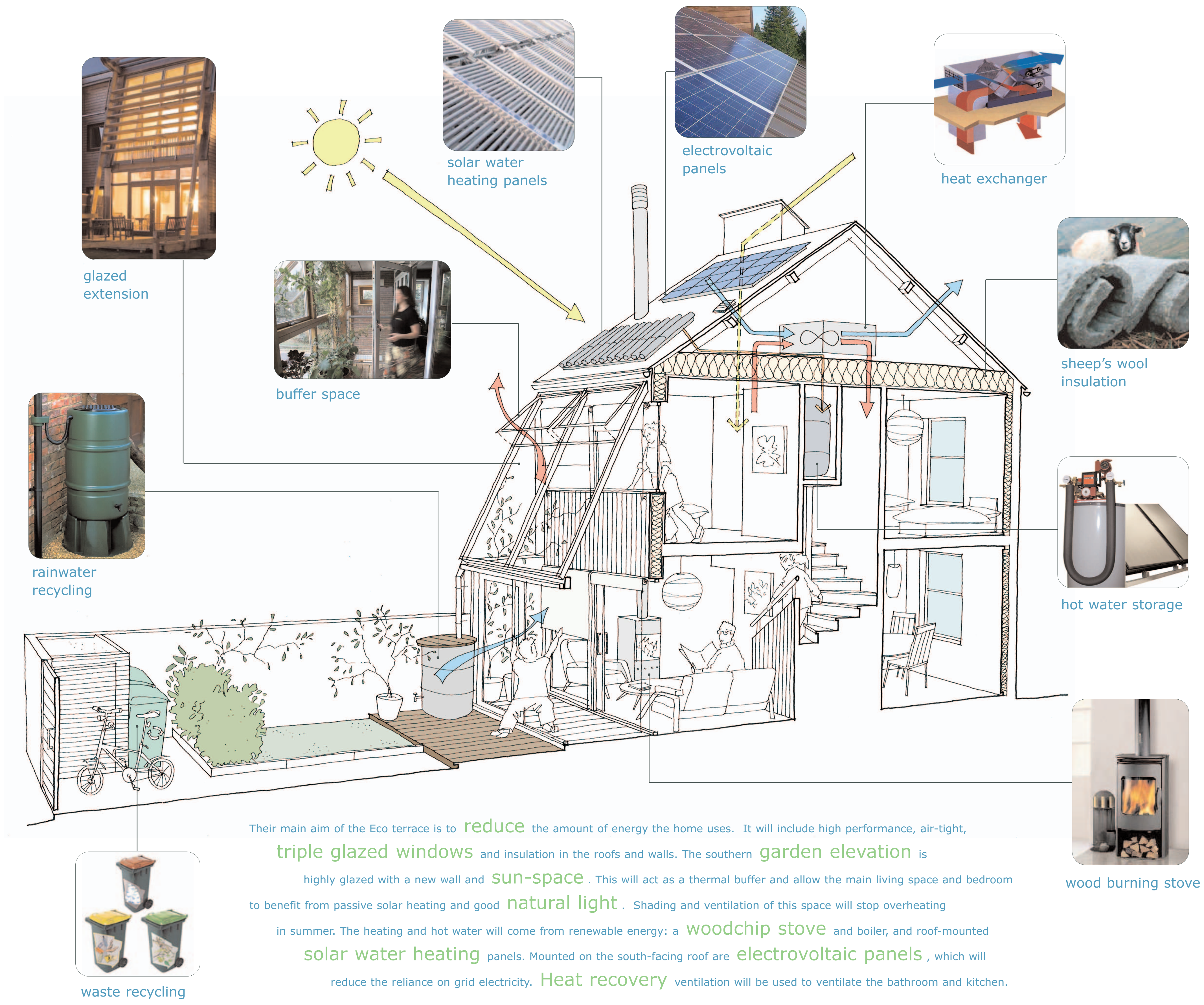
upper floor plan

- 1. Entrance hall
- 2. Guest bedroom
- 3. W.C.
- 4. Kitchen / dining
- 5. Deck / walled garden
- 6. Main bedroom
- 7. Main bathroom
- 8. Living space
- 9. Study

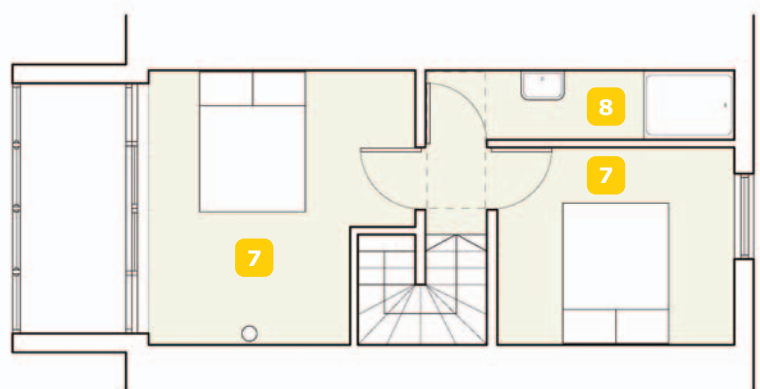


# the Eco terrace

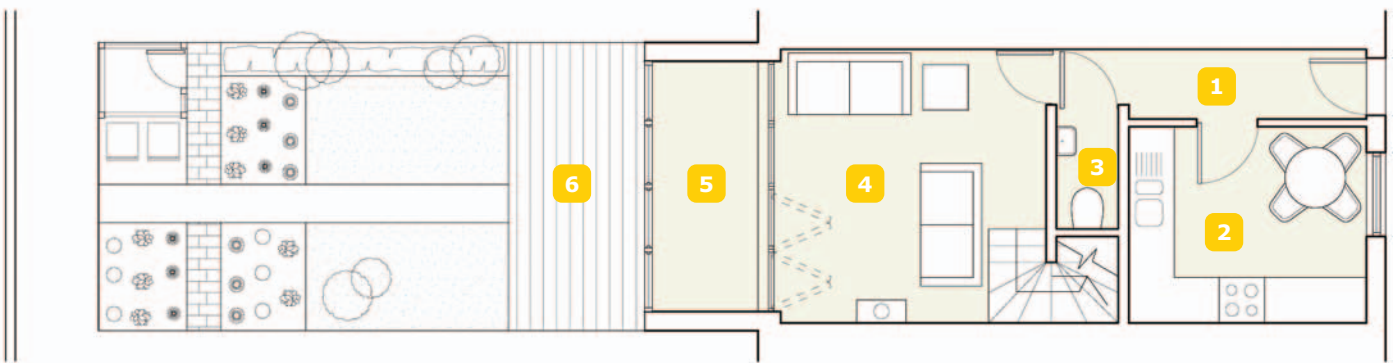
The residents of the Eco terrace are a **young family** who work within the fields of sustainability and environmental advocacy. They wish to make their home a continuation of their commitment to **sustainability**, to create a house that **reduces** their impact on the environment as much as possible. They have chosen to refurbish an existing house, because this in itself is very sustainable. Choosing a house close to the city centre, allows them to make the best use of **cycling**, walking and **public transport** to get to school, work, shops and other amenities. The garden will be able to provide space for their bicycles, **composting** and **recycling** and rainwater storage needs. They will take care to use sustainable materials, energy efficient lights and fittings throughout to complete a house, which is an extension of their **'low carbon'** lifestyle.



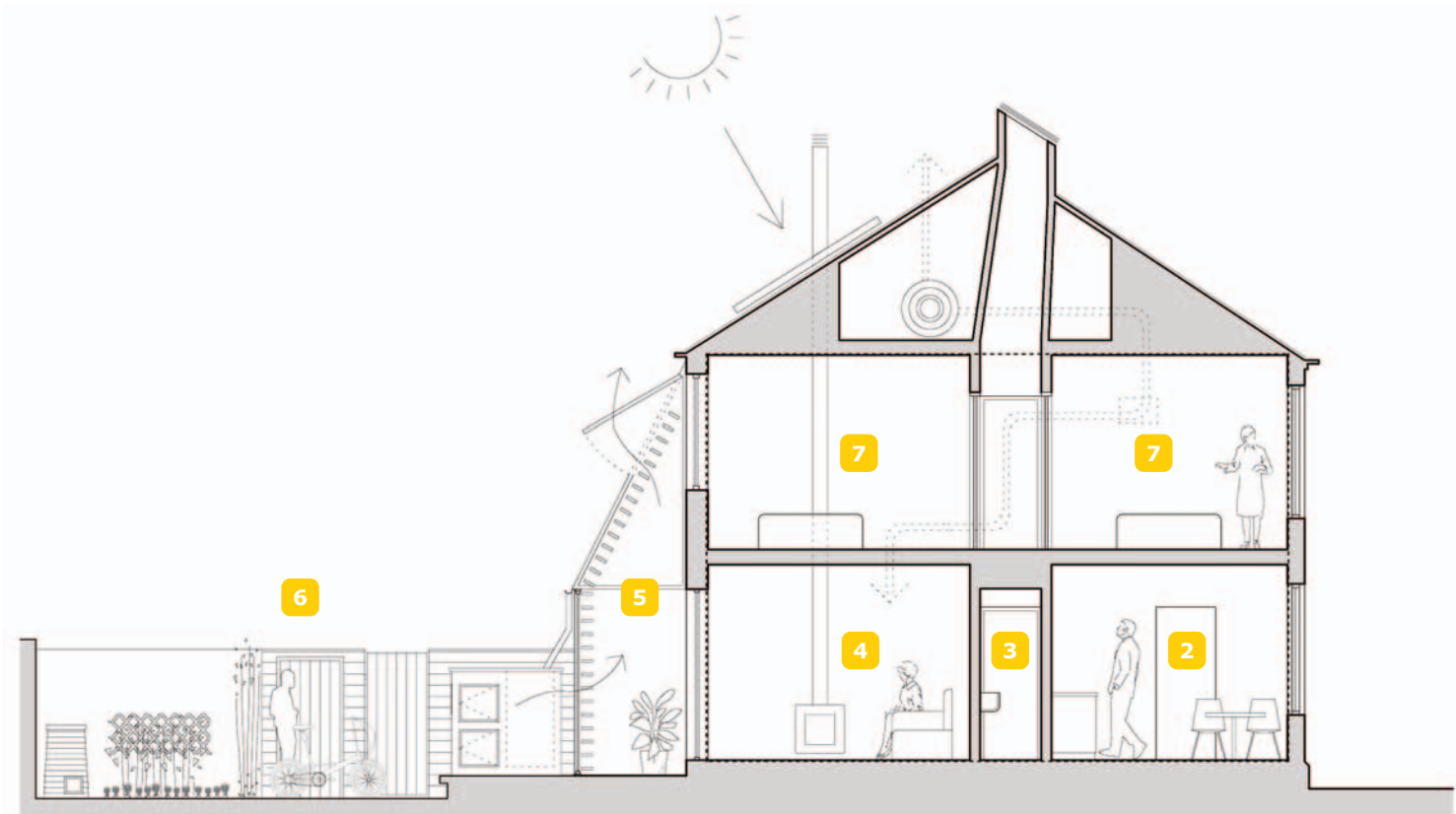
- 1. Entrance hall
- 2. Kitchen / dining
- 3. W.C.
- 4. Living space
- 5. Sun space
- 6. Deck / walled garden
- 7. Bedroom
- 8. Shower room



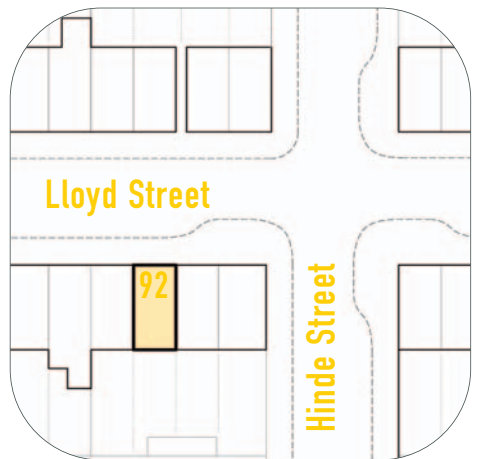
first floor plan



ground floor plan



long section





# the healthy terrace

The family in the Healthy terrace have created a house, which embodies their desire to lead a consciously **healthy lifestyle**, combining light, air, exercise, good diet, home-grown produce and natural materials. The ground floor has been made **open plan**, centring on the **kitchen** and **dining** area, so placing cooking and family meals at the centre of daily life. The kitchen is extended and connected to the garden via a small glass extension. The garden is given over to an intensive **vegetable garden** with planting beds, a **greenhouse** on a south facing wall, and composting, bike and garden stores.



sauna



light pipe



veg plot



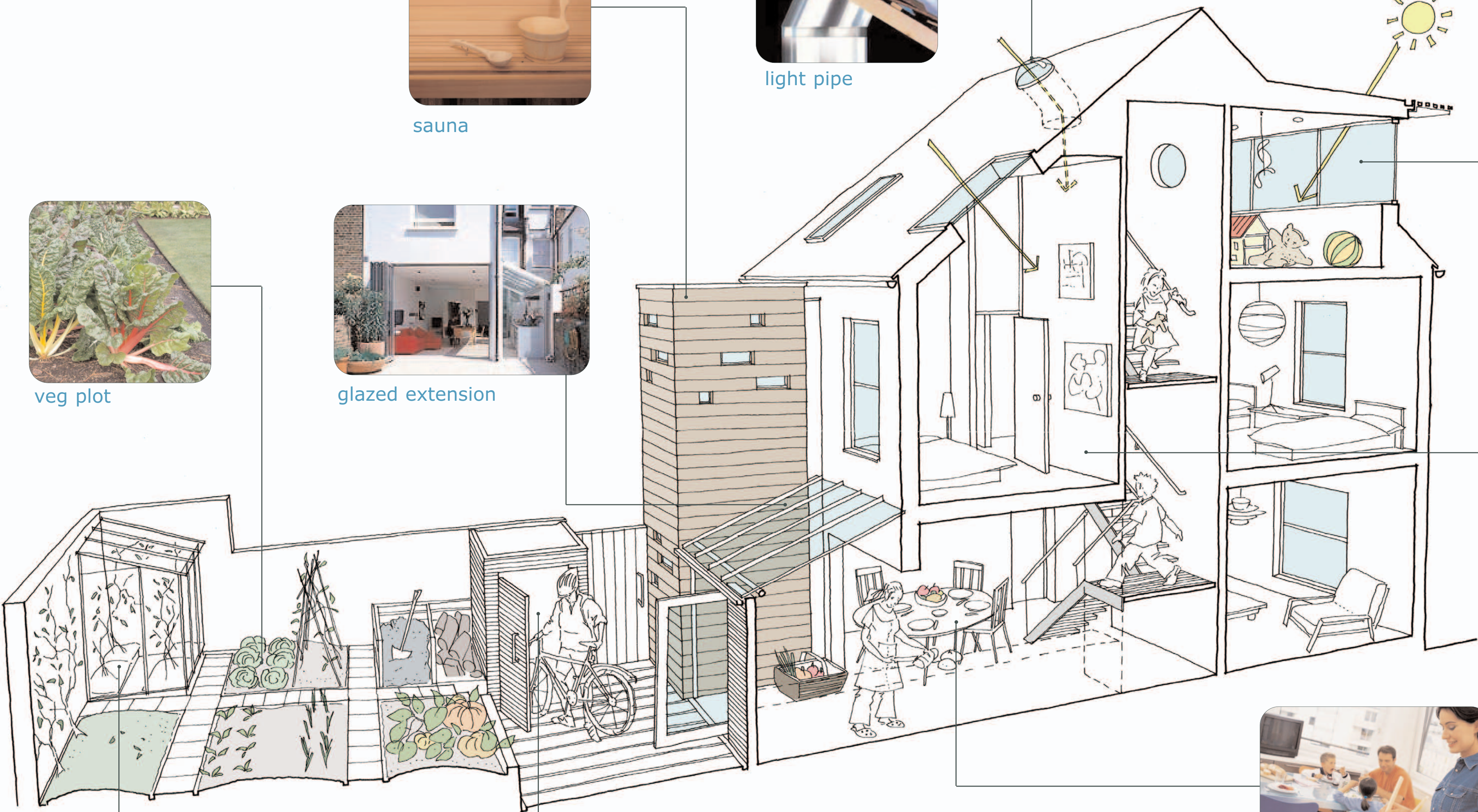
glazed extension



attic play room



top-lit bedroom



family dining

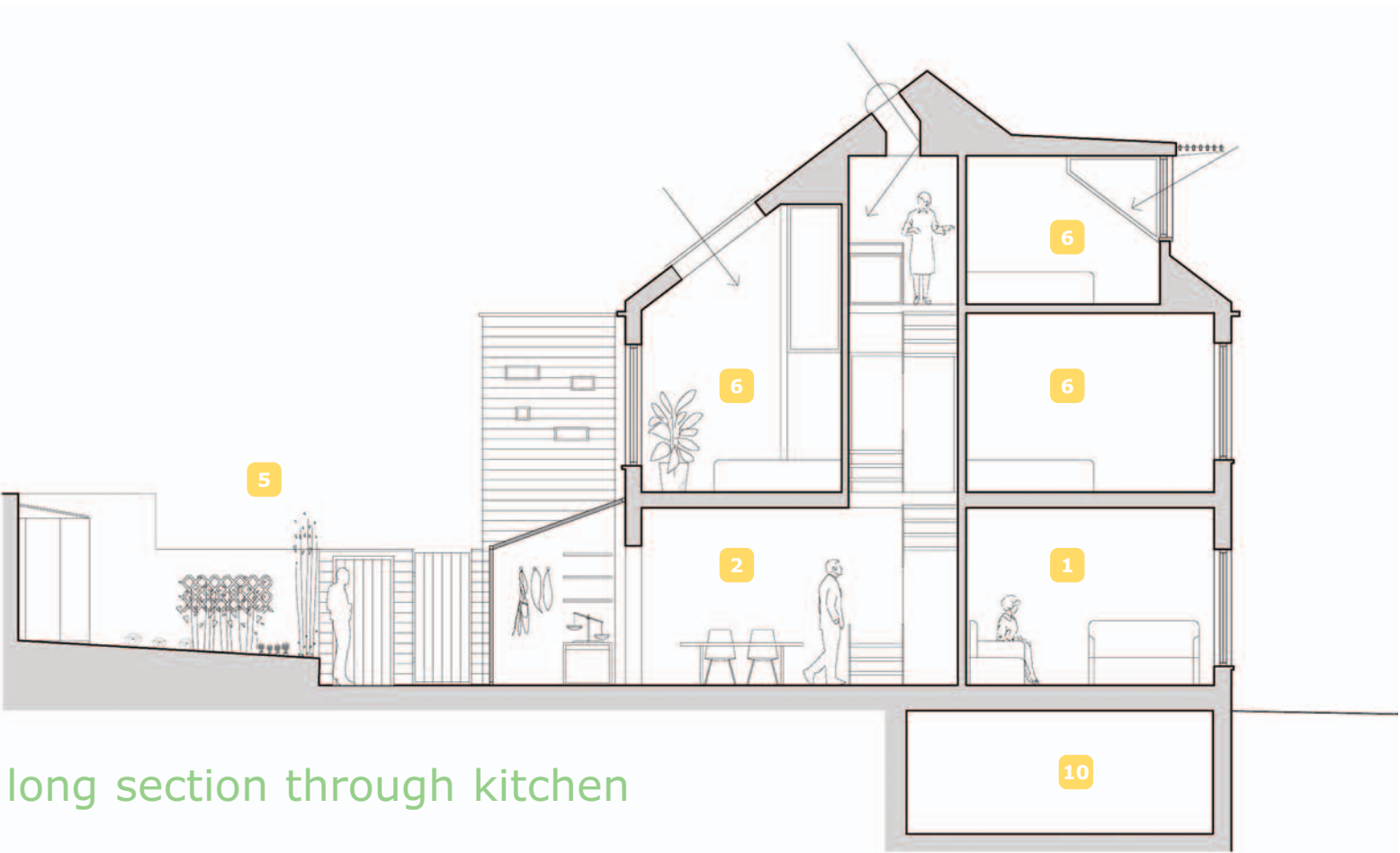


greenhouse

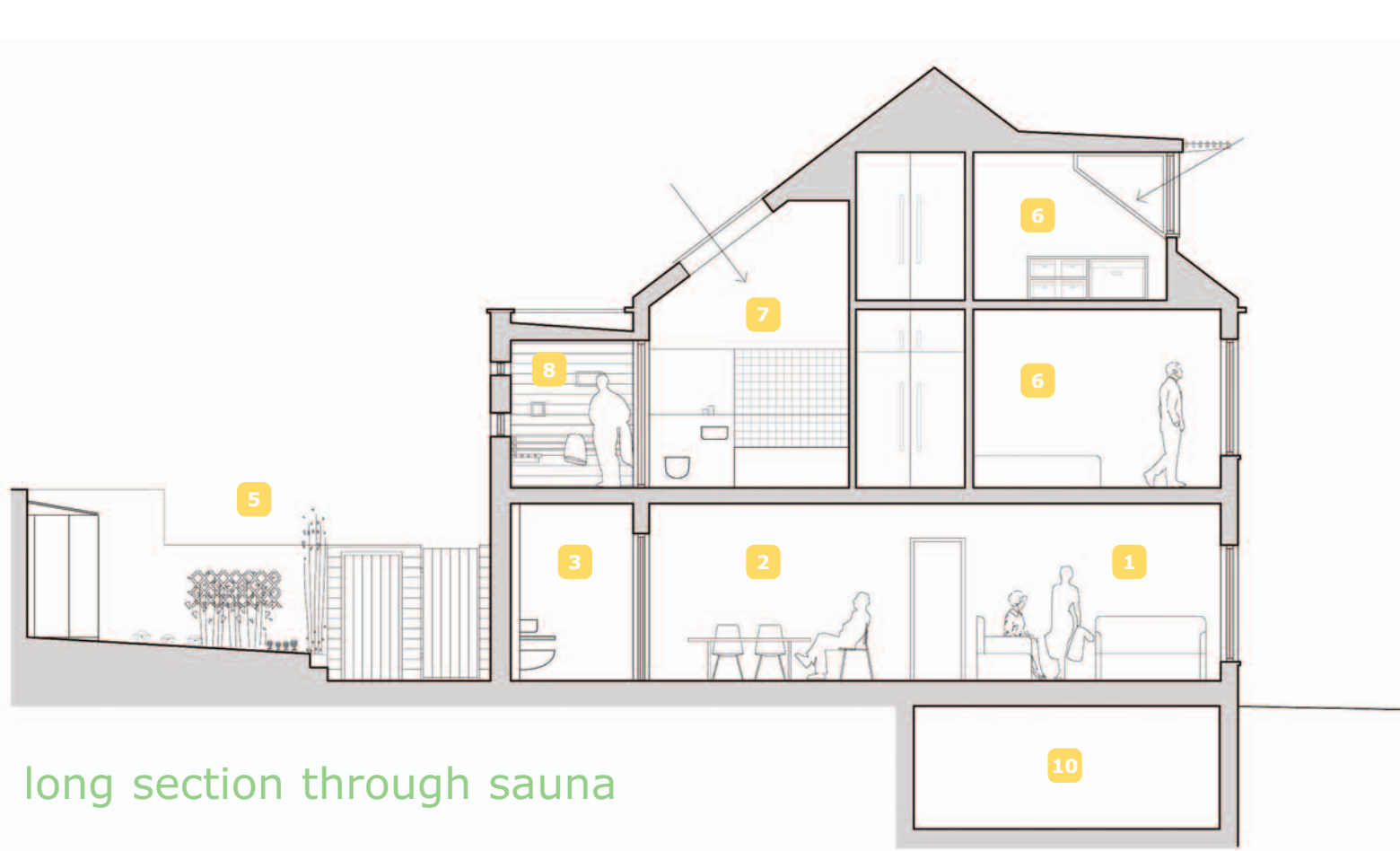


outdoor store

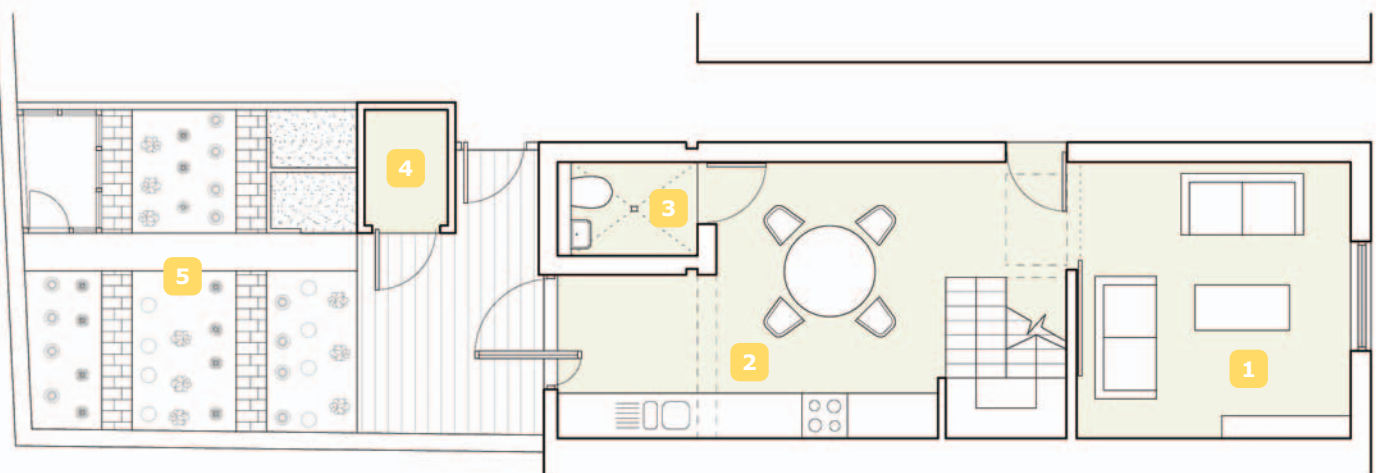
To allow for the future use of the ground floor by the **elderly** or **disabled** a small timber-clad addition provides a **ground floor shower** and **wc**. The front room living space can be separated off with a sliding door to create a sleeping area. Level access is created through the back gate into the new kitchen extension. A new safe, well-lit and **accessible stair** for both the disabled and young children has been added. On the upper floors the bedroom and bathroom have been remodelled to create **taller** spaces, bringing in light and air through new **rooflights**. The bathroom is extended into the timber extension, creating a small **sauna**. In the absence of much external play area, the top floor has been remodelled to create a generous, sunlit **playroom** for the children. Large sliding windows can open up the room to the outside air and sun-shading protects from overheating and glare. Non-toxic, **organic materials**, paints and finishes complement these alterations in their holistic approach to creating a healthy home environment.



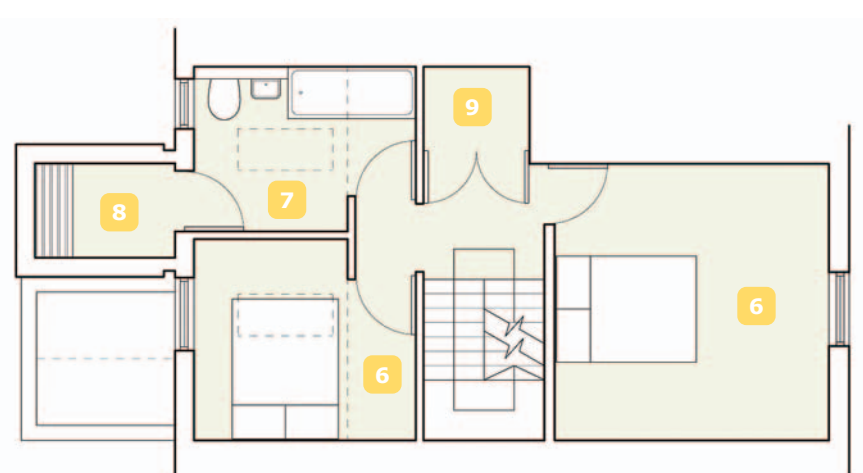
long section through kitchen



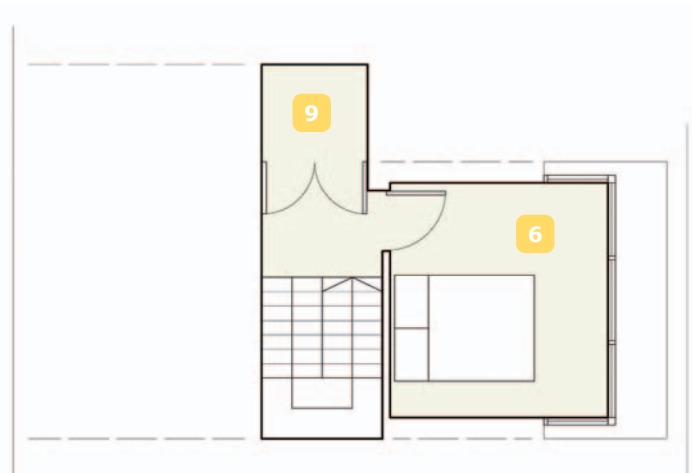
long section through sauna



ground floor plan



first floor plan



upper floor plan

- 1. Living room
- 2. Kitchen / dining
- 3. Shower room
- 4. Cycle store
- 5. Kitchen garden
- 6. Bedroom
- 7. Bathroom
- 8. Sauna
- 9. Store
- 10. Basement



# twice the terrace

The 'Twice the Terrace' residents are a **large family**, who have outgrown their existing house, but wish to remain in the neighbourhood close to their family, **community** ties and schools. 'Twice the Terrace' gives them the opportunity to do this by reconfiguring a typical local terraced house type to create a house design that celebrates the **life** and **energy** of a large household. By **combining** two neighbouring properties, a five-bedroom house is created. The ground floor is given over to **flexible living** spaces. A **large kitchen** and dining room runs front to back allowing for the whole family to eat and cook together. The living room and study can be opened into one to create an equally large room for large **family gatherings** and occasions.



bridge



bedroom porthole



large kitchen



glazed screen



attic bedroom



top-lit atrium

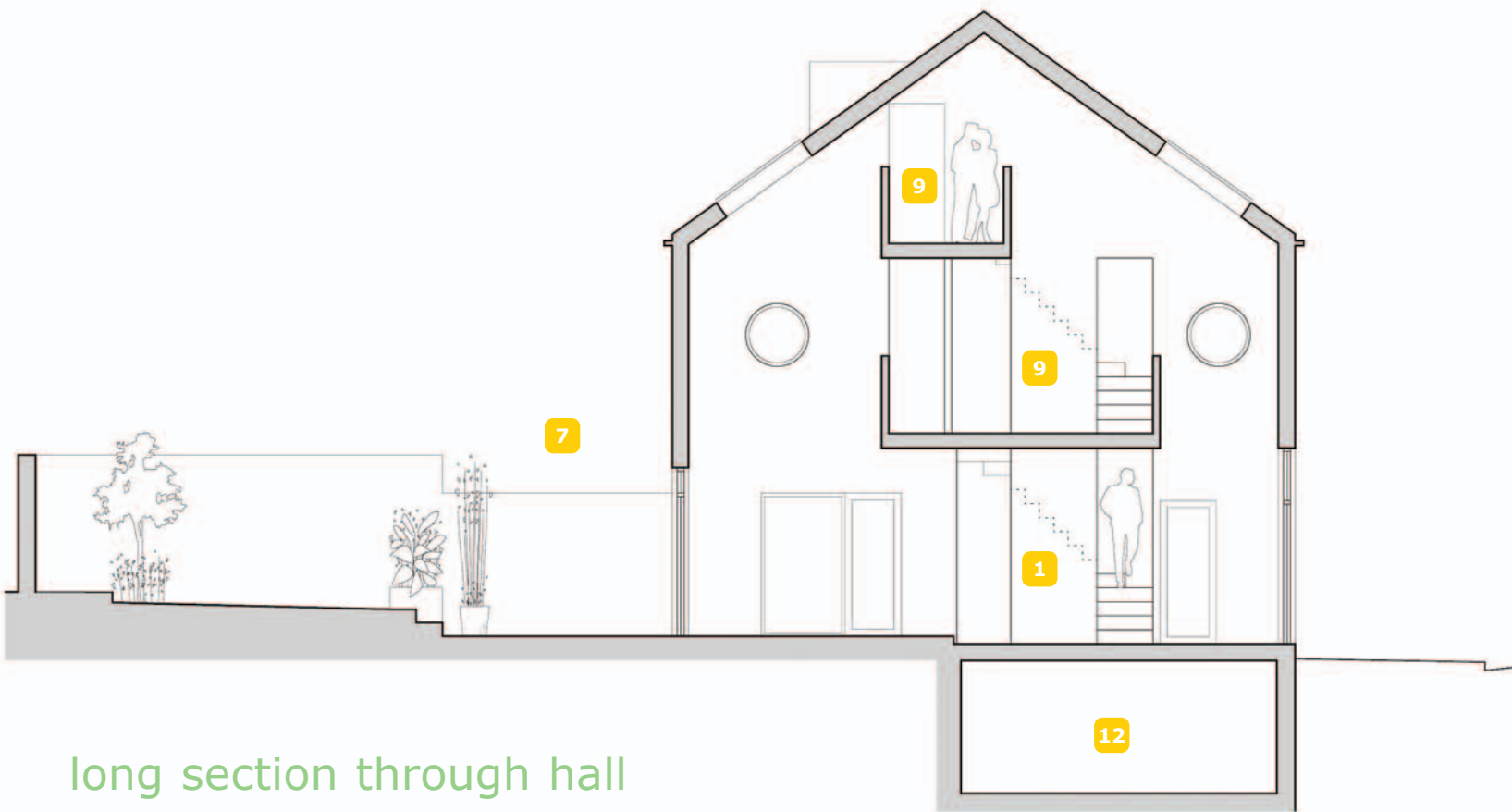


hidden stair

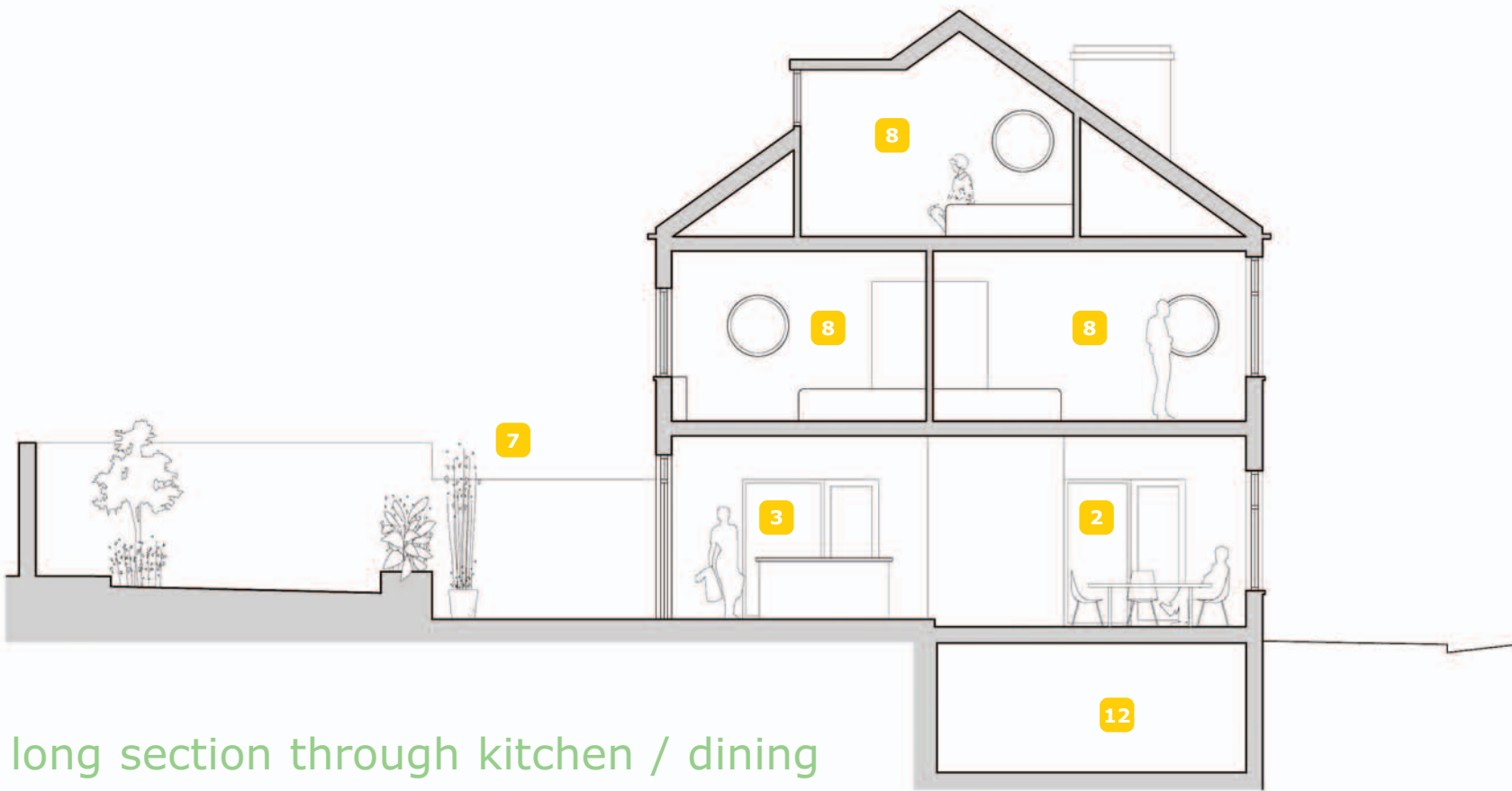


flexible living room

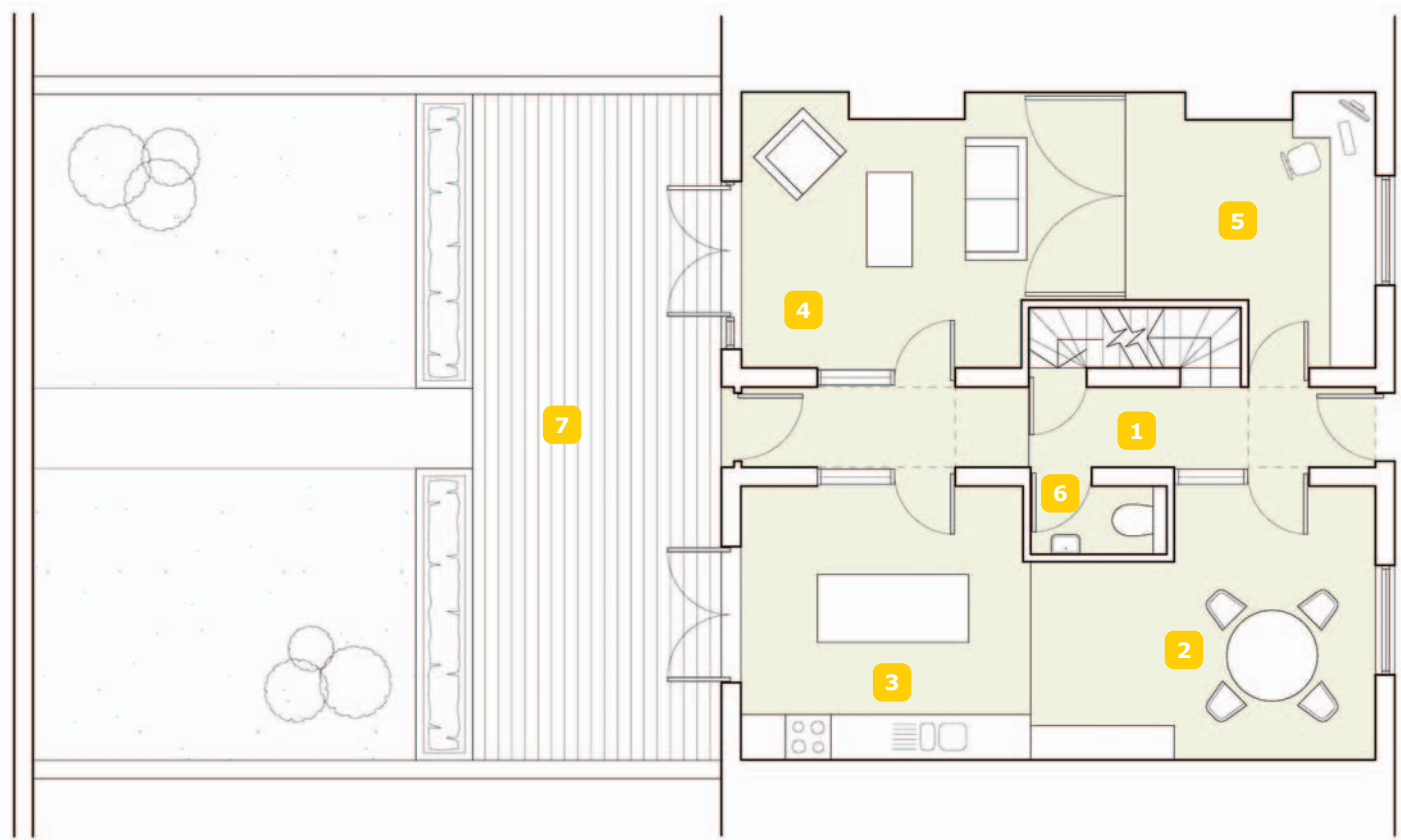
A **vertical atrium** is created up through the middle of the house connecting the entrance hall and ground floor rooms to the bedrooms above. The circulation routes of the upper floors cross this space as **bridges** and the rooms have **glazed screens**, doors and windows, which look into this space. This atrium serves to create a sense of unity, connection and enjoyment of the large household, where one is always aware of other members of the family and **activity** that is occurring in the rest of the house. It also serves functional purposes such as enabling easier **communication**, keeping an eye on children whilst working in another room etc. The upper floors are occupied by the bedrooms, with their **'porthole'** windows looking into the atrium. There are two bathrooms placed next to each other on the 1st floor landing in order to avoid the 'bathroom queue' problem often encountered in large households. A large **lawned garden**, which can accommodate a large number of children, is created from the combination of the two back yards.



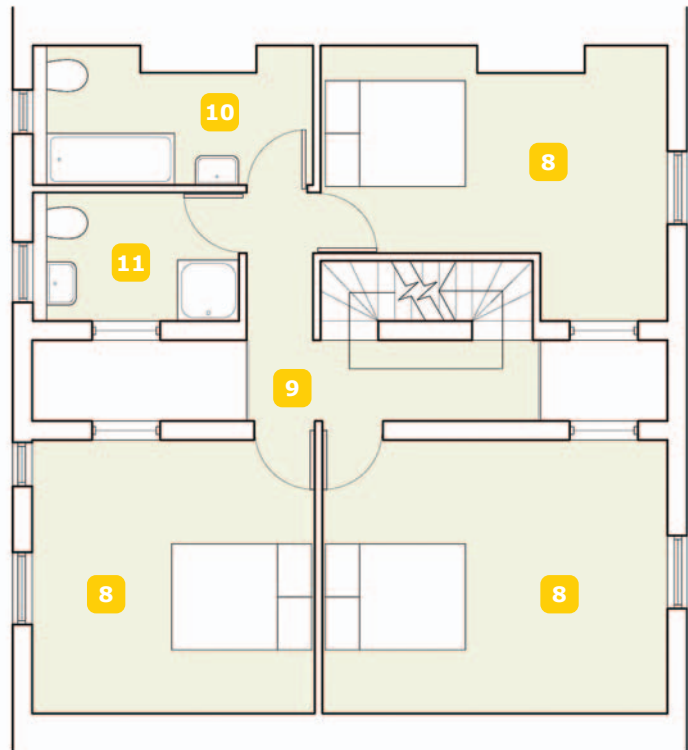
long section through hall



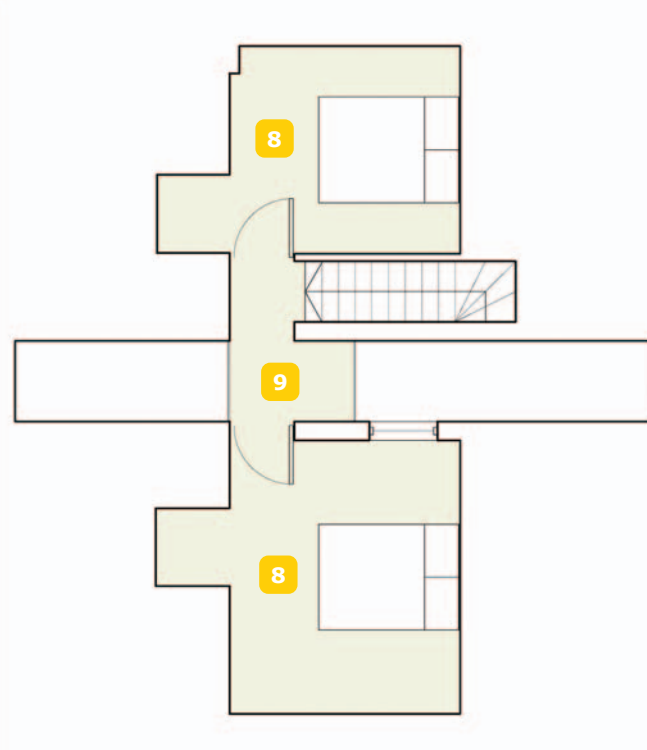
long section through kitchen / dining



ground floor plan



first floor plan



upper floor plan

- 1. Entrance hall
- 2. Dining
- 3. Kitchen
- 4. Living room
- 5. Study
- 6. W.C.
- 7. Deck / walled garden
- 8. Bedroom
- 9. Bridge / landing
- 10. Bathroom
- 11. Shower room
- 12. Basement