

# Burngreave Messenger



**Voice of the Burngreave Community**

Congratulations and good luck to our Lord Mayor Jackie

## Jackie Drayton becomes Lord Mayor

**On 17th May Local councillor Jackie Drayton was made Lord Mayor of Sheffield. Jackie, who has been a Burngreave councillor for many years, was sworn in at a ceremony held at the Town Hall.**

Jackie said in her speech:

*“Well what can I say... I can't believe it and I have to keep pinching myself. Me... Jackie Drayton... Jackie Cooper that was, a young girl off a council estate – Lord Mayor of Sheffield!”*

Jackie has been an active member of the Burngreave community for many years and a local councillor for ten years. She came to Burngreave in 1979 from Coventry and has lived here ever since.

Leaving school at 16 with no qualifications, she later became a mature student at Warwick University and went on to obtain a degree in teaching and worked in education for over 25 years.

Jackie has always loved Burngreave, stating in her speech:

*“I'm fortunate to have lived in Burngreave since I arrived in Sheffield and I have had the wonderful opportunity of meeting and making friends with people*



*from many different backgrounds and cultures. These people have enriched my life and the life of our great city. I have, and always will, value their friendship and support.”*

Jackie will spend the next year as Lord Mayor, and although remaining a councillor she will not be holding any surgeries for residents in the coming year.

But as this issue of the *Messenger* shows, she will be busy representing the Council at events in Burngreave and across the city.

by Tom Sadler

### Lord Mayor's Parade

This year's Lord Mayor's Parade will take place on Saturday 8th July. The parade will begin at 12 noon (meet for 11am) from St James Street and finish on the Devonshire Green in the city centre. Local school children are

currently working on costumes, flags, banners and masks to use in the parade. Funds have been raised by Green City Action, with the support of the Area Panel and New Deal, to send an artist into schools to support them.

For more information, contact Bob Worm at Green City Action on 244 0353.



© Anwar Suliman

**Abbeyfield Park  
Multicultural Festival  
Sunday 9th July 2006**

**ZION TRAIN & TIPPA irie  
Jinx & MANAK-E  
SPECIAL GUESTS BHANGRA SHOWCASE**

**bison & POKE  
PLUS MANY MANY MORE...**

**FESTIVAL INFORMATION LINE : 0114 2440353**



# Free DIY Classes

## Home Owners Maintenance and Advice Scheme



We are running the following DIY classes for Owner Occupiers living in the Burngreave New Deal area:

**22 June (6.00–8.00pm) & 24 June (10.00am–12.00 noon)**

**Paving** (2 part course)– preparation and laying of paving

**29 June (5.45–8.00pm)**

**Pointing** – how to prepare and renew pointing

**08 July (9.30am–12.30pm)**

**Fencing** – how to lay out and install fencing

The classes, for men and women, are being held at the Construction Centre, 21 Buckenham Street. If you require a translator or crèche facilities please advise when booking. The places are allocated on a first come, first served basis.

If you are interested in attending any of the above classes please contact the **Home Owners Maintenance Team** on **273 4623**.



## Burngreave Grant Fund GRANTS OF UP TO £5,000

*Get involved with your community...*

*Does your organisation have a new or innovative idea that would benefit local residents?*

*Would a small grant allow you to develop your idea?*

If so contact the BNDfC Grants Team to discuss your idea.

Organisations can apply for a grant of up to £5,000 and individuals and groups can also benefit with grants of up to £500.

We will even consider groups which are not fully constituted, but we need to be clear who will be responsible for the money.

Your applications will be considered as long as:

- It helps people get involved in their local community.
- The people who benefit are from the Burngreave New Deal Area.

The next closing dates for Grant Applications are:  
**30th June • 28th July • 25th August**

For an application pack, phone the Grants Team on (0114) 292 2906 or 292 2905.

YOU ARE INVITED TO JOIN  
**BURNGREAVE MENS ACTIVITY  
AND CONVERSATION CLUB**  
PRACTICE & IMPROVE YOUR ENGLISH LANGUAGE SKILLS  
COFFEE, TEA, NEW PEOPLE, FRIENDLY FACES

**2pm Every Thursday The Welcome Centre  
Nottingham Street, Pitsmoor Sheffield**



More Information: Jeff on 07949510872

## Travel and Try It

*Would you like to make your life more interesting and improve your social circle?*

*Do you feel isolated and unable to visit local places on your own?*

*Would you like to try new activities but feel too worried to go alone?*

*Do you live in the Burngreave New Deal Area?*

### JOIN THE NEW 'TRAVEL AND TRY IT' GROUP

Meeting in a group will give us more confidence and an opportunity to taste a range of the good things Sheffield has to offer. eg theatres, art galleries, bowling, Ponds Forge, etc.

Also we hope to experience different indoor activities eg arts and crafts.

We have some ideas but maybe you have your own suggestions...

**Come and meet us on:**

**Fridays, 1–3pm, beginning 9th June  
at 30 Minna Road (off Burngreave Road)**

For more information call  
**Patsy at Pitsmoor Surgery**  
on (0114) 276 2644



Funded by BNDfC. Help will be available for the cost of the outings.

# Grimesthorpe inquiry

**Outline planning applications to build houses on the north side of Smithies Field, next to Grimesthorpe Road, were refused by the Council last November, because the Council considers this land to be a greenfield site, partly open space and having trees on it which are subject to tree preservation orders (see *Messengers for September, October and November 2005*).**

The Council argues that there are plenty of unused brownfield (previously built on) sites in Sheffield, and that this area is visually attractive.

The applicants, Redwall Developments, are appealing against this decision. The appeal will be held in public, but no date has yet been given. Anyone who wants their views on this application to be considered must send comments by Thursday 8th June (details below).

An earlier outline application for development of another area, to the east and nearest the existing houses on Grimesthorpe Road was granted in May last year.

Meanwhile Redwall have submitted another outline application, covering both the area for which they already have permission, and part of the area for which permission has already been refused.

Redwall argue that new housing is needed in Sheffield for single people. They argue that this site, although it was very overgrown (or was until they cleared it), used to have buildings on it. Not all the land is affected by tree preservation orders.

Local resident Pat Eckhart argues that the very dense development proposed for the east area is inappropriate, because of the lack of local facilities. Grimesthorpe Road is bordered by mature trees which make it seem like a pleasant country lane.

On their website, Redwall say the their housing projects are 'increasingly "green" – featuring photovoltaic electricity systems, rainwater recycling, low energy designs.' Redwall is a Rotherham company which specialises in working with housing associations. Their website: <http://www.redwall-group.co.uk/index.htm>.

If you want your views to be considered, send three copies of what you want to say, to arrive by 8th June, to: The Planning Inspectorate, Room 3/18a, Temple Quay House, 2 The Square, Bristol BS1 6PN. Be sure to quote references APP/J4423/A/06/2011978/NWF and APP/J4423/A/06/2012014/NWF.

by Andrew Green

## BCAT AGM

**The Burngreave Community Action Trust (BCAT) AGM was held on 24th May at Pye Bank School with approximately 20 people attending.**

The annual financial report was presented by Acting Executive Director, Paul Haine. Questions after included a query about the purchase of their base at 12–14 Burngreave Road. Kevin Hartney of the Forum (BCAF) responded by saying it is possible they may secure the building for less than market value from Sheffield Homes.

The Chair, Lynda Kenyon, presented her report. She felt the hard work of the Board of Trustees as well as the workers was not appreciated by New Deal. She considers the relationship between New Deal and BCAT/BCAF to be hostile and manipulative. She told the meeting that the terms and conditions set out by New Deal are non-negotiable and their proposed quota of four core staff would greatly jeopardise the functionality of the organisation. It was noted that there was no representation from New Deal at the AGM to give any feedback from their point of view.

Trustees were elected as follows: Yvonne Hayes (Chair), Christine Steers (Secretary), Steve Cooke (Treasurer), Lynda Kenyon, Nsrine Ahmed and Chris Sissons.

by Camille Daughma



### A time of change

Burngreave is on the brink of significant change. This month the Sheffield press hailed Burngreave New Deal for Communities a success, but with five years still to go much could happen, and many changes will be beyond the control of New Deal. Decisions about new housing or road schemes will be in the hands of the Council's planning board and this month saw anxious residents around Catherine Street concerned by both Better Buses plans and Masterplan demolition proposals. Residents around Grimesthorpe also face a struggle to protect the valued green space near their homes.

The Burngreave community will need a strong unified voice if it is to get a real say in these changes.

### Volunteers needed

Can you help us cover the Abbeyfield Festival? We need volunteers to take photos, collect people's comments or interview the acts. If you'd like to be involved please get in touch.

The *Messenger* always needs more volunteers, if you can help with writing, photography, proofreading, decision making or if you just want to share the gossip we'd love to hear from you.

## Messenger Info

Meetings: 6.30pm at Abbeyfield Park House

Editorial: Wed, 7th June

Management: Thu, 6th July

All welcome.

Copy deadline: 27th June

Burngreave Messenger Ltd  
Abbeyfield Park House  
Abbeyfield Road  
Sheffield S4 7AT

(0114) 242 0564

[messenger@burngreave.net](mailto:messenger@burngreave.net)

[www.burngreavemessenger.org.uk](http://www.burngreavemessenger.org.uk)

The Burngreave Messenger is a community newspaper, funded by New Deal, with editorial independence. We aim to increase and encourage communication in Burngreave. Each edition is put together by an editorial team who write articles not otherwise credited. This month's team: Kate Atkinson, Annie Blindell, Ian Clifford, Camille Daughma, Rohan Francis, Naheem Hanif, Saleema Imam, Jamie Marriott, Tom Sadler, Rob Smith, Lisa Swift and Paul Taylor. All content is copyright Burngreave Messenger Ltd or its voluntary contributors, not to be reproduced without permission.

## Osgathorpe Park

Grass sledging, climbing and footy! If you fancy having a go at any of these activities, come and join Friends of Osgathorpe Park on Sunday 2nd July 10.30am–1.30pm in the park. There'll also be chance to have your say on how best to improve the sports area by the Pavilion. Call Amie Rowland (Parks & Countryside) on 273 6952 for more information.

## Football players required

Earl Marshal Under 11s are looking for more players for the coming season. Players need to be entering Year 6 in September 2006.

For more information contact Mark Moran-Healy 0777 645 7732.

## Join Burngreave Ramblers

All walks leave from Abbeyfield Park gates on Abbeyfield Road at 10.45am on alternate Saturdays. Walks are five to seven miles long and are usually in the Peak District. Accompanied children are welcome but the walks are not suitable for push chairs or very small children.

Next walks: 17th June, 1st and 15th July.  
For more information contact Jill on 243 8867.

## Verdon Street Agewell & Senior Citizens Groups

Need members to join them.  
They are a small friendly group.

**Senior Citizens: Wednesday 1.00–3.30pm**  
They play prize bingo & cards.  
Refreshments are free

**Agewell Group: Thursday 2.00–3.30pm**  
They have activities, speakers and craft.  
Refreshments are free

Both clubs join together for trips.

*If you are fed up of staying in and looking at the four walls please join us...*

**For more information, contact:  
(0114) 273 8353**

**Saturday  
8th July 2006  
10.30am–2.00pm**



## Verdon Recreation Centre

Come along to this informative and entertaining event for blind and partially-sighted Somali people, their carers, service providers and anyone interested. Display of specialised equipment. Somali food. Parking. Disabled access.

Ka soo qayb gal shirkan muhiimka ah ee uu qabanayo ururka (HABS). Waxaad heli doontaa macluumaad badan oo khuseeya dadka indhaha la iyo kuwa aan si buuxda waxba u arkin.

Waxa kaloo kuu diyaar ah meel aad gaadhiga dhigato, Cunto dhadhan leh iyo cabitaan qabaw iyo kulaylba leh.

**For more information  
contact (0114) 275 0050**

# New system at CAB

**People coming for help at Pitsmoor Citizens Advice Bureau (CAB) may notice a change to our service from 31st May. We will be changing our 'first come first served' drop-in to an appointment system.**

We are a very busy advice centre. When we open the doors there is invariably a queue, which fills our waiting room and results in the people who come in last



*Volunteers and staff at Pitsmoor CAB.*

waiting hours for help. We conducted a survey of our clients and found that nearly half did not speak English as their first language or were not born in the UK. These factors make our job more challenging, take longer – and often more fulfilling.

As well as the team who help people from the open door service we have advice workers who work with local communities, such as Somali, Pakistani and Afro Caribbean communities, or specialise in areas of advice work, such as debt, benefits or immigration.

We believe we do a good job – our team of advice workers (mostly volunteers) give advice to people experiencing a wide range of problems and much more. But we decided that it wasn't good enough to ask people to wait a long time before they got a service and when we asked people how we could improve the service quite a few said they would prefer appointments.

So, when people come in the future they should have a short wait and an initial interview with an experienced advice worker who will: give them an appointment with an advice worker in the near future or refer them to a person who can help them most (this may be in Pitsmoor CAB or in one of our partner organisations) or tell them where they can access a more appropriate service.

We think this will allow us to prepare for appointments better, by arranging an interpreter for example, but more importantly this will allow us to provide a better service without people having to sit for hours in our waiting room.

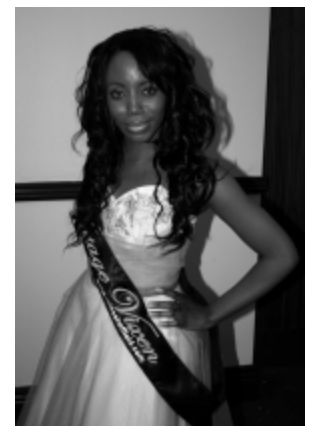
Pitsmoor Citizens Advice Bureau is open Monday, Wednesday and Friday 10am–1pm, or call 275 5376.

**by Chris Walker, Manager**

## Beauty finalist

**Congratulations to Burngreave's Miss Sheffield 2006 finalist Sarah-Jane Madden who made it to the final ten of this year's beauty pageant.**

Sarah-Jane said: "I was delighted to have made the final ten out of the original 200 or so. I consider it a real achievement, and I'd like to thank all of the *Burngreave Messenger* readers for their unparalleled support since the start of my campaign."



# Investing in our Vestry Hall

**An expectant buzz greeted people at the Vestry Hall meeting on Thursday 18th May at Shiloh Church in Spital Hill. The Burngreave community was widely represented with a good turn out.**



There were displays by the various participants on the project, particular interest was shown in the architectural model. Architect, Simon Gedye, was very willing to answer questions and explain the model, the fittings and purposes of each room.

Chair of the meeting, Rev Dr John Vincent, gave a brief history of the previous use of the Vestry Hall, which included weddings, meetings, announcing the election results as well as the early beginnings of many organisations.

In the 1990s the Council could no longer sustain it financially. It was then that Sarah Saxon, a community worker, supported local people to raise funding to refurbish the building. John Mellor (pictured above right) gave a brief history of the Vestry Hall Trust's campaign to renovate the building. He displayed an illustration from an 1879 London newspaper, which showed children lined up at the side entrance for bread and soup.

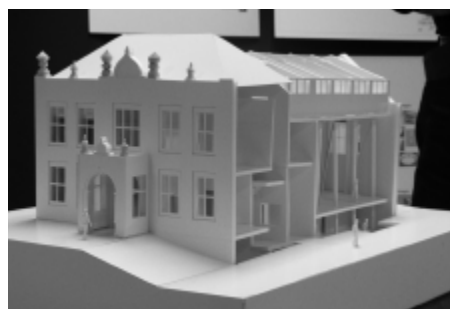
New Deal's Education Theme Manager,

importance of stringent management to avoid it becoming an expensive white elephant. It is intended that it will be used for community activities, youth after-school activities, meetings, weddings and other functions, the main room having a capacity to hold 150 people. Most importantly it will be a place for good education and training to take place. He ended his speech imploring everyone, "It's an exciting time, get involved, we'll make a great success of this."

The architect, designer, and construction team answered questions and invited members in the audience to participate, whether by serving on the management committee, or voicing their ideas. Concern was expressed that the Vestry Hall could suffer from vandalism and that smaller IT facilities would be displaced by the Vestry's facilities. It was promised that the concerns aired would be looked in to and addressed as best as possible.

Vestry Hall t-shirts are presently on sale for £5.00. for more information contact John Mellor on 243 6305.

For more information about the Vestry Hall plans contact Jon Cowley on 292 2908. You can also see Richard Hanson's photos of the renovation work <http://www.vestryhall.co.uk/>.



Jon Cowley (pictured above left), clad in his Vestry Hall t-shirt, conveyed his vision for the Vestry Hall as a 21st century facility, though keeping its original features. He stressed the importance of it being sustainable after the initial 18 months to two years funding from New Deal, this and the refurbishment is estimated to cost £3 million. The ongoing maintenance costs could be £100,000 per year, hence the

**by Camille Daughma**

# Bus plans get no better for some

**The updated Better Buses proposals, aimed at improving bus journeys through Burngreave, have been met with further confusion and opposition. Some local residents think the plans will only create traffic problems and dangers where there are none at the moment.**

The updated plan proposes to move the bus stop, in the lay-by on Burngreave Road up to Cranworth Road and re-open the Catherine Street junction to left turning traffic from Burngreave Road. The Council's Transport Planning Team hope that this will address concerns about lack of parking for the Burngreave Wine Shop (pictured above), which thrives on passing trade.

Residents on Burngreave Road and Catherine Street are particularly unhappy, and have presented a petition of 40 signatures to the Highways Planning Board. The police blocked off Catherine Street fifteen years ago to combat a serious problem of 'rat-running' and speeding. Residents are worried these problems would return if the road was re-opened.

Jennifer Booth, who lives on the corner of the junction and organised the petition, said:

**"The Council is only doing this to be seen to be doing something. There's no problem with congestion on Burngreave Road, but problems will be created by narrowing the road for a bus lane. I don't believe cars will obey the one-way system. Cars will come racing through, putting residents at risk. The bus stop is used by about 40 school children each morning and it will be dangerous having so many on a narrow pavement, where the new bus stop is proposed."**

John Ray, who lives near the new proposed bus stop, said: "This is not good for residents, the bus stop is currently in an ideal place. It doesn't annoy residents because the only thing near enough to it is the Wine Shop."

Raja Saddiq Khan, who lives on Burngreave Road, said that he was really unhappy and didn't think the new proposals were needed, as there are no problems with traffic on Burngreave Road, even at peak times.



An elderly resident, who uses the bus stop regularly, said:

**"I like the idea of new bus shelters with raised kerbs because it will make it easier for me to get on and off the bus, but I don't think they need to move the bus stop. If they want to make buses better they should look at the prices."**

by Will Jones

## Spital Hill response

The proposals to make Hallcar Street one way off Spital Hill, instead of closing it entirely have been met with mixed feelings by local businesses.

Matthew Richardson, from the New Roots Café, said: "If it reduces traffic it would be good, but if lorries are going down the road it will be bad for our customers. If they were to close the road we could put tables outside."

The one-way system may also cause problems for Designer Woodwork Services on Hallcar Street. Dan Stocks of DWS said: "Traffic mostly goes the other way so we may lose out."

The plan to create formal parking on Spital Hill has been welcomed by local businesses, as currently customers find it difficult to park. Malcolm Seddon of Glenmill Carpets said:

**"It will be an advantage for our customers, but not for us who park for nine hours a day. The meters will stop people parking here and going into town."**

Jodie Egan of Hobson's Butchers agreed that customers will benefit from the plans. "It would make a lot of difference. People are parking their cars and coming in here, but at the moment they get tickets, so it puts them off coming here."

by Carlene Hepworth

## Discontent continues

Mr Patel of Burngreave Wine Shop fears the proposals could put him and his family out of business. He said:

**"Along with a lot of other local people, I objected to the first proposals to place double-yellow lines outside my shop and moving the bus bay. The revised proposal still leaves double-yellow lines outside my shop and moves the bus stop outside somebody else's family home, causing them to object."**

**Having served this community for over twenty years I now feel my whole family is facing bankruptcy."**

Mr Patel also fears that the proposal to set up a one-way system on Catherine Street to allow customers to park won't work. "Large haulage trucks, vans and passing trade won't stop on a one-way system. I will lose a lot of trade."

## Residents' ideas

Mr Patel and other local people have written a letter to Cllr Jones and the Director of Development Services David Curtis, outlining their objections to the present plan and also giving alternative suggestions. Mr Patel said:

**"If you move the bus lane five metres back up Burngreave Road, from Catherine Street to Cranworth Road, there would still be space for 50 vehicles queuing on Burngreave Road. Also this would save a lot of money being spent on traffic lights, moving bus stops and opening one-way systems that local people know will cause mayhem."**

by Rob Smith

The Better Buses Team has received less than ten responses to the amended proposals. David Budd, one of the planners, told us:

**"In light of the small number of people who have commented, it is the hope of the Council and the Transport Executive that the revised proposals have been met more favourably by local people. All the issues raised during consultations will be reported to the Council's West and North Planning and Highways Board, planned for 13th June. The Board will decide the way forward on the proposals"**

For further information on the revised proposals, call the information line on 0845 30 343.

# Catherine Street wrangle

**A Burngreave Road resident has won the fight to save his garage, which was under threat of demolition under the Masterplan for Catherine Street.**

Mr Zulfkhar Ali was informed in November 2005 that his private garage was not involved in any redevelopment plans for Catherine Street, but in late March he was told it was in the plan for redevelopment and demolition. Mr Ali then strongly objected to the East Regeneration Team. "I was not given any specific reason as to why my garage was being knocked down," said Mr Ali. He later read to his amazement the Sheffield City Council cabinet report dated 25th January 2006 which stated:

**"This garage has been reported in the local press as attracting nuisance from drug activities and its inclusion in the redevelopment proposals would make for a more coherent development."**

Mr Ali is very annoyed that the East Regeneration Team Manager did not tell him about this report, neither were he or his family given a chance to be involved in any consultation prior to the submission of this document.

**"Since the pub has gone there has still been a real issue with drugs here that has made our lives a misery. Since those flats were built they have created this drug issue from day one and everyone knows the flats are the problem. This has nothing**

**to do with my family or our property."**

Another local resident confirmed that the flats were the problem. Jennifer Booth who lives opposite Mr Ali's garage, told the *Messenger*:

**"There's always an ambulance or a police car outside the flats, and people have even asked me to sell them drugs when I've walked past. But it's not the garage that causes it."**

Brian Somerson, joint chief executive of Arches Housing on Catherine Street, concurs with Mr Ali: "I am not aware of any drug dealing in the garage," he said. "There's nothing coming from Arches Housing either. We have had a guy in one of the Catherine Street houses who found a load of needles in a bin, but any drug problems were a year or so ago. We haven't seen anything recently as far as I'm aware."

Mr Ali has now received a letter informing him that his garage is no longer in the redevelopment plan and offering an apology. When the *Messenger* rang the East Regeneration team for a statement they admitted that, yes, they had made a mistake.

**"Mr Ali contacted us on 4th May, I met with him on 8th May and the following week I sent him the letter. Before that we had nothing to go on, but when he put in his objections, we did act. When we said that there were anti-social behaviour**



**problems, any reports of drug use absolutely did not imply he was complicit in that. It was not written to imply that, but if that is how he feels then I absolutely offer an apology."**

Mr Ali still wants answers. "The main thing for me is why was it put in? They never said anything to me about it before they put it in their report. This apology doesn't change the fact that this drug allegation is still there in the report," he said.

**"I would like that to be taken out of the report; not only taken out, but brought to the attention of councillors that it has been put in there as fact. I would ask councillors to look into it and ask East Regeneration where they got their information from."**

**"I want a public apology, because it was published publicly on the internet. Tomorrow it could be someone else. They should bring East Regeneration to some kind of account."**

by Jennifer McKiernan  
and Rob Smith

## Residents win safer roads campaign

**Grimesthorpe residents have succeeded in their six year campaign for traffic calming measures on Grimesthorpe Road and Carwood Road.**

Burngreave New Deal for Communities have now agreed the funding of £315,000 for the scheme. Andy Godson from the Council says that this scheme is now "definitely a definite" and "is expected to start on site in late September to early October".

Pat Eckhardt, a local resident is "really pleased that something is going to be done at last" but, following the recent consultation event at the Cornerstone, is still worried that the Council did not listen to her about children crossing at the dangerous Torbay Road corner to go to Firvale School. I talked to Andy

again who said that this corner and children crossing had been a real concern to them but that technically, because of the camber of the road, it is difficult to put in a crossing that would meet safety standards. Instead the whole scheme has been designed to slow and reduce traffic at this point. Other changes that have been made based on residents' suggestions include more variety between humps and cushions, and a crossing hump where the round walk crosses Grimesthorpe Road.

An additional £150,000 was also agreed at the meeting to cover a traffic calming scheme on Ellesmere Road, which will go out for consultation as soon as plans are drawn up. Its main aim is to make it safer to cross the road to the bus stops, nursery and open space.

Other road safety schemes currently being planned for the area include one on Burngreave Road/Catherine Road which is funded by the Better Buses Project and a small scheme on Barnsley Road/Osgathorpe Road funded by the Area Panel. The plan for the Pitsmoor Road/Rutland Road junction will not now go ahead because it will cost over £200,000 to install new traffic lights that allow for pedestrians.

If you want any more information about either the Ellesmere or Grimesthorpe and Carwood traffic calming schemes then contact Andy Godson 273 4479. The final date for consultation for the Grimesthorpe and Carwood traffic calming scheme is Monday 5th June.

by Clare Burnell

# “Do they think we are not human?”

**Hiwa Ahmedy arrived early to meet me at the Kurdish Community Centre. He was eager to tell his story. Hiwa is a 30-year-old Iranian Kurd who's lived in Sheffield for ten months. The majority of Kurds in Sheffield originate from Iraq, but Hiwa, like other Kurds, see themselves firstly as Kurdish whether they were born in Iraq, Iran, Turkey or Syria.**



© Carl Rose

He spoke to me via Ari Moustafa, Chair of the Kurdish Community Centre, who translated. Hiwa was a taxi driver in Iran and his chatty manner seemed at odds with the grave story he was about to tell me. He explained that he left Iran after he was imprisoned and tortured because of his involvement with the Kurdish Democratic Party of Iran. He crossed the mountains into Iraq where he lived for 13 years, surviving two attempts on his life by the pursuing Iranian authorities. His sister was hanged for her political activity.

## No human rights

Why did he come to the UK? “Before we heard many things about England, about human rights. Unfortunately when I arrived here I didn't see anything like that. All I heard before was untrue and there's no human rights here”. After three months, the National Asylum Support Service (NASS) stopped all support to him. He still doesn't know why and without an expensive solicitor it is impossible to challenge this decision. Like other asylum seekers Hiwa does not have the right to work. So how did he live? “Kurdish people give me food for the day” and his home for the last six months has been a derelict garage “to hide from the rain and cold”.

## “If I go back, they kill me”

Hiwa has been assessed at the Northern General Hospital and needs a major operation for a stomach problem. He coughed and held his stomach while he spoke: living rough has worsened his condition. But he can't get medical attention while he has no address and he can't get NASS accommodation without agreeing to return voluntarily to Iran. He explained that he would “love to go back to Iran” where his family live but “they (the Iranian authorities) know my name in my area and if I go back, they kill me”.

Despite his situation Hiwa is dignified and generous: “There are many other cases like me,” he stressed. What can we do to help? Hiwa urged people to write to the Home Office, their MP and to demonstrate against this enforced poverty. “Do they think we are not human?”

by Stuart Crosthwaite

## Kurdish Community Centre AGM

Fifty-five people attended the Annual General Meeting of the newly re-opened Kurdish Community Centre (KCC), on 30th April, electing eight people to their Management Committee. KCC has already been running an English class three days a week and has offered advice and support to over 400 people since it reopened in January. They have ambitious plans to organise various Kurdish cultural activities and to become a base for the local Kurdish football team.



The KCC is at 163 Verdon Street. All communities are welcome. Open: 10am–2pm, Monday–Wednesday. Phone: 279 5318 or 0770 426 6613 out of office hours, or email: [kurdishcentre@yahoo.co.uk](mailto:kurdishcentre@yahoo.co.uk).

**GLENMILL  
CARPETS** 

**The Complete Home  
Furnishing Centre**  
Carpets, Beds and Suites

38–42 Spital Hill, Sheffield S4 7LG  
Tel: (0114) 272 0200 • Fax: (0114) 272 0200  
377–381 South Road, Walkley, Sheffield S6 3TD  
Tel: (0114) 232 0011

Double bed for the price of a single  
when you bring a copy of the *Messenger* in!

**JB'S CATERING**

THE BEST OUTSIDE CATERERS

ALL TASTES CATERED FOR  
AFRO-CARIBBEAN AND  
HALAL FOOD AVAILABLE

FOR PARTIES, TRAINING DAYS,  
FAMILY EVENTS, OPEN DAYS,  
CONFERENCES & SEMINARS

FOR MORE INFORMATION CONTACT  
**JUDITH CLARKE** ON 0786 210 5252  
EMAIL: [JBCATERING@BLUEYONDER.CO.UK](mailto:JBCATERING@BLUEYONDER.CO.UK)



# The Pub Guide

## The Grapes

**The Grapes public house on Gower Street has been run by the same family for a number of years now. The present landlord, Martin, took over The Grapes when his mother Lucy retired. He and his wife Gina have worked very hard to make a very successful local.**



The atmosphere they have created is both warm and friendly. You are made to feel very welcome and their presence behind the bar is much appreciated by one and all.

Beers on offer are Stones, Worthingtons and John Smiths Smooth, as well as popular lagers, ciders and Guinness. John Smiths Smooth at £1.70 is very popular. These are kept in excellent condition by the hard work of the landlord Martin, and with the same dedication, Gina keeps the bar area and pub in pristine condition.

There are two rooms, a very cosy snug or tap room and a partitioned room which restricts entertainment somewhat, so no disco or karaoke. Ask most of the customers though and this is what they find as a nice change – to have a conversation, without having to shout over loud music.

They also have one of the best teams in the Burngreave Tuesday Night Social League, and are currently at the number one spot; also the food prepared by Gina for these games is excellent. So if you are in the area and fancy a good drink served in pleasant surroundings call in at The Grapes.

by Bill Nicolas

### Opening times

Monday–Thursday: 12 noon–12 midnight  
Friday & Saturday: 12 noon–1am  
Sunday: 12 noon–3pm, 8pm–12 midnight

Telephone: 249 3473.

## Monte Carlo Pizza

**A local entrepreneur's gamble to turn two shops into one unique café experience has paid off.**

Tawfer Alshemari, manager of Monte Carlo Pizza on Spital Hill, has discovered that an authentic blend of ingredients is the key to success in his bid to bring a taste of the laid-back continental café culture to Burngreave's doorstep.



After previous incarnations, the new Monte Carlo is now in fact two shops knocked into one, which has created room for an ample seating area and even a child-friendly pool table.

And despite only opening in April a large number of customers are already taking a break from the daily grind by enjoying Monte Carlo's impressive range of coffees and hot beverages, delicious home-made sandwiches, fruit juices and authentic pizzas, and by relaxing in its friendly cosmopolitan atmosphere.

"We are doing well now," Mr Alshemari said. "Anybody who comes, comes again and again. They are happy with our sandwiches, our coffee and our prices. We have got a very positive reaction."

Monte Carlo Pizza is open until 11pm every night and will also be screening World Cup football matches later this month.

## Marie-Henriette Hair

**A new salon on the fringe of Burngreave is teasing fashionable residents with a tantalising range of hairstyles and cosmetics.**

Marie-Henriette Hair Salon and Cosmetics has put down roots at 93 The Wicker after it became time for the business, previously next door, to get its own make-over.

Under manager Henrietta Menguele the salon now has a much larger shop floor meaning it can see to more customers and enlarge its exciting range of products.



The shop's best-selling items are extensions, styling products and, to make your preparation for a perfect night on the town complete, even shoes and CDs of African music.

Mrs Henriette said: "What we sell most of are weave-ons made of human hair and of all colours to match the needs of my customers."

Although specialising in Afro-European hair, people of all types are invited to come in for a treatment by the team of expert hair stylists, from a simple wash and set, to plaits, colouring and more adventurous dreadlocks.

Marie-Henriette Hair Saloon and Cosmetics is open from Monday to Friday 10.00am–7.30pm, Saturday 9.30am–8.00pm, and on Sunday by appointment only. Telephone: 270 6667.

by Ben Knight

# Learners celebrate success

**In recognition of Adults Learners' Week Burngreave Community Learning Campaign, in conjunction with other local organisations, launched the Burngreave Celebrates Learning Festival on Saturday 20th May.**

Although rain threatened to ruin the event, it was well attended and most of the programme went ahead. The children enchanted on-lookers with their maypole dancing and the live bands were excellent. Food was provided by Crown Catering and other local caterers. Those businesses and organisations running stalls went in the Verdon Community Centre building. Coral Jarrett from the Sheffield Sickle Cell and Thalassaemia Foundation (SSCAT) and Karen from the Burngreave Drug Project were impressed with the turnout and interest by the community.

One local resident said: "It was an enjoyable day, but it was a pity that the attendance of the event was marred by the weather."

Anne Grange, Burngreave Community Learning Campaign:

*"Hundreds of people were there, and they really enjoyed it, even though the weather wasn't brilliant – a big thank you to people for turning out.*

*"We gave out 40 certificates on the day to adult learners who had taken part in a wide range of courses including ESOL, cooking, IT, healthy living, first aid and food hygiene. Thanks to all the organisations who took part, and helped it run smoothly."*

For more information about BCLC contact 279 4960.

by Yvonne Blake



# Breast is Best!

**A breastfeeding awareness event held at Abbeyfield Park on 15th May has proved to be a huge success.**

The event, which was run to coincide with National Breastfeeding Awareness week, was attended by over 40 mothers from the local community, eager to find out more about the benefits of breastfeeding for them and their children.



Trainee breastfeeding councillor Denise Palmer (*pictured above centre*) was one of the volunteers providing advice to mothers and families along with a Breastfeeding Support Councillor and a midwife.

“There are many reasons why breastfeeding is beneficial,” said Denise. “It provides all the nutrients the baby needs during its first six months of life, builds up the baby’s immune system and protects against infections. It is also easier for the baby to digest.”

*As well as giving the baby a good start in life, breastfeeding is also good for mothers. “It can help the bonding between mother and baby and even help the mother regain her shape after giving birth. Studies have also shown that mothers who breastfeed are less likely to develop breast and ovarian cancer.”*

Partners can even get involved as the mother can express her milk and transfer to a bottle. “It is also good for the environment as you don’t have to use sterilising

chemicals to clean bottles,” added Denise.

If you would like further information about breastfeeding there is a breastfeeding café every Wednesday from 9.30–11.30am at the Burngreave Children’s Centre on Spital Street. The café is open to mothers and their families for advice and support in all aspects of breastfeeding. You can contact Burngreave Children’s Centre on 252 5220.

by Claire Berry

# Braving the rain for Environment Day

**Another successful Environmental Day was organised by Green City Action on Sunday 21st May in Abbeyfield Park.**

Local people braved the rain to browse round the various stalls. The theme was the environment and recycling.

People were encouraged to join the Tool Bank, where they can borrow a variety of tools and gardening equipment. Local gardeners had donated an array of plants for sale and hanging baskets were made up and sold for a very reasonable price, subsidised by the Area Panel.

It was a real family day out. Dozens of children queued in the rain to have their bicycles checked at the cycle MoT.



Burngreave Children’s Centre helped toddlers decorate plant pots and plant seeds in the shelter, built last year by local young people. The football was rained off, but we were entertained by the Junk Percussion Workshop, with Bongo Bert Rogers and Travis. The

children loved making a variety of instruments, from drums to a saxophone, all recycled out of rubbish! Other recycling took place with children making butterflies out of old plastic folders.

A show garden was created, by Grimesthorpe Community Gardens, hopefully this will be on full display at the Abbeyfield Festival in the summer. The Community Foresters were also there, encouraging people to take part in their free plant a tree in your garden scheme and the popular tree trail walks.

Delicious food was provided by the New Roots Café, a wide range of organic snacks like burritos and homemade cakes alongside Betty’s Famous Teas and Cakes.

by Michelle Cook



All © Camille Daughma

## Singin' and dancin'



**Ellesmere Youth Project (EYP) has been keeping children safe and occupied in the Carwood and Ellesmere area for many years. Now some of their young people have brought together a dance group who have been entertaining Burngreave.**

"I began coming here about a year ago," explained Shaniece aged 14. "We then began singing and dancing mainly because we enjoyed it. We are now a group that started because more people were joining the club and we decided to form Militant as a performance group."

"Dancing and singing takes place on Tuesdays at the Cornerstone Building," explains Lorraine Blake, EYP's Senior Youth Worker.

"Our aims it entertain everybody and the whole dancing and singing has given me confidence," adds Shaniece.

"We think this youth club is fantastic for us to come and associate and spend time with our loved ones," chuckled Ayesha and Francesca.

Seventeen-year-old Anton agreed that the scene for them was cool. "Cos we can chill and express lyrics over our music and performance."

Reuben, 12 said, "This is a good place, gets us off the streets and it's a safe place to chill. Could do with it being open more time though."

Fourteen-year-old Raymond explained: "This was a good place for us youngsters to chill out and learn to socialise. Seen..."

Sadie and Amina informed me how they've been able to get involved in many things including cooking and hairdressing. They have also been away on plenty of trips and outings.

"We also gained many certificates of merit which mark our achievements," explains Sadie. "This year we have also worked as play assistants gaining experience with six- to twelve-year-olds," adds Amina.

Any young people interested in coming along for singing and dancing or any other activities contact Lorraine Blake on 0788 677 7068.

by Rob Smith

## Space to chill

**I was recently invited to meet a young man who's leading the way for a great local initiative. Eighteen-year-old Jahshanti Wilson has been a local resident all his life and he spoke to the Messenger about the recent fulfilment of his dream.**



"Hanging around when I was younger, I've always wanted to create a chillout space, you know, for us young peoples.

Anyway, to achieve this, I set up and have finally established a group called Burngreave Young People's Group (BYPG)."

Jahshanti and other young people who are involved in Burngreave Problem Busters have inspired this new project. Creating a bank account and becoming a fully constituted group means they were able to seek and gain local grant funding.

Based inside Rainbow House they have created a chillout space for members only. For further information on becoming a member contact the number below.

**"This will be where us young peoples will be able to chill out, play pool and the latest games on the new Xbox-360. We have a large plasma screen TV, internet access, also music and the latest films. Our group also has plans to go on monthly trips such as quad-biking; motor-biking; paint-balling; ice-skating and eventually trips abroad. Also inside the space there will be a tuck shop catering for refreshments and snacks."**

The launch event will take place 4-7pm on Friday 9th June. At 7pm on the second floor, Rainbow House will be open to all young people to view and chill out.

This project is targeting the age group 14-25. "The aim is to keep others and ourselves off the streets, preventing criminal records and ASBOs etc," continued Jahshanti, "This group plans to run as a yearly private membership club and will only allow members to frequent the Chillout Space. Becoming a member will also allow you to receive discount offers and promotions from agencies supporting this project."

Zain Abdulla, co-ordinator of Sheffield Future's Streetworx project said, "We are supporting BYPG building its capacity to deliver a young people's centre under the banner of the Chillout Space. YASY (Youth Association South Yorkshire) are also providing this group with all the policy and procedures they will be adopting."

For membership contact Jahshanti Wilson on 0775 690 9547. For more information about Streetworx contact Zain Abdulla on 0792 149 1540 or 272 3628.

by Rob Smith

# Warm and friendly homes

**A new development of 'eco-friendly' social housing is under construction at the Earldom site, located on the hillside between Catherine Road and Grimesthorpe Road. The developers, Arches Housing Association, believe that this project might be the first, in Sheffield, to achieve the government's 'EcoHomes Excellent' standard. On completion the site will be officially named 'Burnwood'.**



© Rohan Francis

Twenty-three family homes including three bungalows designed for older people and one purpose built home for wheelchair users are nearing completion. Eleven 3- and 4-bed houses and eight smaller homes designed to suit couples or new families will occupy the remaining site with a third of the area left as open space.

Each building includes a number of environmentally friendly features such as recycled plastic drainage, steel guttering and non-UPVC windows. All external walls, ground floors and loft areas are highly insulated, which dramatically reduces heat loss and energy use. Arches hope that this measure will mean a 50% reduction in occupiers' heating costs compared to that of a post-war property of a similar size.

The development will be a mixture of approximately one-third of homes for rent and two-thirds for shared ownership with Arches. Properties for sale will be available on a 25%, 50% and 75% share basis. Rents will be kept at an affordable level and start at about £60 per week for a two-bedroom house. In all cases allocation of homes in this scheme is being made by the council's housing department, Sheffield Homes.

The *Messenger's* recent article for this project generated sixty calls from people wishing to register their interest. Arches confirmed that the vast majority of these had come from Burngreave residents.

## Eco friendly enough?

Some may argue that this development presented a golden opportunity to incorporate many more 'eco-friendly' features. Arches' view is that currently, investment in some green building systems is risky, both for the home buyer and the developer – new technology has to stand the test of time before people become happy to live and work with it. The developer's efforts to include features like energy saving insulation, wooden windows and recycled plastics, represent the kind of measures that are achievable and easily accepted.

This is the first in a line of new housing projects that could take place on sites like Ellesmere Old People's Home and Woodside. Plans for these sites are being looked at by the Masterplan's New Housing Project Group. Some of its members, such as local resident Saleema Imam, are hoping for substantially more eco features for these developments such as micro turbines, solar power, self-build opportunities and training for builders in fitting low energy and eco-friendly facilities. Saleema said:

***"It's important that small developments like the Earldom site work well, as big developers often say it can't be done. But this is the minimum of what we would want for an area like Woodside. It's a small step in the right direction."***

**by Rohan Francis**

Anyone interested in visiting a self-build housing scheme in Sheffield with the Burngreave Community Action Forum's Buildings Working Group can contact BCAF on 272 8008 or Saleema on 275 5770.



## Green City Action

## Made to measure

Green City Action can provide window boxes up to one metre wide, made to measure, complete with compost, fertilizer and full of plants for up to £25. If your window sill is not suitable, hanging baskets can be supplied complete at £15 including a fitted bracket. Give us a ring if you want to brighten up your home.

## Banking on Burngreave

Residents of Burngreave Bank, the Council's Parks and Countryside and the Deliver It Green team planted three new mountain ash (rowan) trees at the top of Burngreave Bank. This is the first of a series of improvements to this green space as we start to bring about improvements on the ground. We're banking on you to join us in making this small start spread throughout the area. If you would like to volunteer and gain some skills get, in touch. We can arrange free training in conservation landscaping if you are interested.



© Adrian Wynn

## Stop Press

New Deal have approved funding to expand the Deliver It Green project, which started with Objective 1 funding, to overhaul community green spaces. It will build on the foundations laid down by the Burngreave Green Environment Programme. Improvements will begin with work on Firshill Close, Denholme Street and Pitsmoor Road Open Spaces, Nottingham Cliffe and Burngreave Bank.

Contact Green City Action on 244 0353.

Deliver it **green...**

## Dear Resident,

**I would just like to take a couple of lines to introduce myself to you. My name is Alison Reid and I have been with Burngreave New Deal for Communities Partnership for a couple of weeks now as the Communication Manager. Originally from London, I have lived in Sheffield for 23 years.**



BNDfC would like to use these pages to keep you informed about what we are doing and provide an opportunity to discuss, in an open forum, issues which are important to you.

Send me your views by either post or email and I will include in future editions – my contact details are at the bottom right of the page opposite.

You will be aware that BNDfC have purchased a number of buildings in the Burngreave area over the last couple of years. Many of you will have been at the public meetings and been a part of the consultation process that led to the purchase and proposed redevelopment of Vestry Hall and Sorby House.

However, BNDfC had to move quickly over the purchase of Forum House earlier this year, the background to the purchase is set out opposite.

## Partnership Board Meeting

**Wednesday, 26 April 2006**

The Monitoring and Evaluation Manager, Jackie Toyne, made a presentation regarding the proposed evaluation project. Jackie reported that evaluation is a vital tool and a compulsory element of the NDC programme. The project will generate useful information on what works (and what doesn't), and will help guide the development of future work. It will also allow residents to receive meaningful feedback.

The Chief Executive, John Clark, added that this process enables BNDfC and organisations in the area to gather evidence which can then be used to secure other funding and make them more effective and sustainable.

The project was approved to go ahead with immediate effect and will run until March 2009.

John Clark presented the Transport Strategy. There had been a number of amendments to the original plan based on proposals by members of the Burngreave–FirVale Transport Strategy group.

We had originally agreed to fund nine schemes. However, it was identified that a key scheme for local residents was the improvements to Grimethorpe Road. This scheme was considerably more expensive than anticipated which required a reprioritising of the original plan to ensure that this important scheme went ahead.

The proposed changes of the transport scheme were noted and accepted by the Board and work is expected to start in the next few months.

John Clark reported that on average approximately 25% of employees in NDC programmes nationally are employed from the local community as compared to Burngreave where 46% of employees live in the area.

John also updated the Board regarding the Transformational Project and the Board noted the contents of the report.

**Full minutes of BNDfC Board meeting are available on the BNDfC website and copies are available in the Spital Hill library.**

## Community Safety

*Have you been a victim of crime, or do you know someone who has?*

*Do you want to help make your community safe?*

*Do you have a community neighbourhood watch scheme in your area?*

*Do you want information on different types of illegal substances and their misuse?*

*Do you want to help support vulnerable people so they are less likely to commit offences or re-offend?*

If you answered yes to any of the questions above call in and discuss your concerns with the right people. You will have the opportunity to talk, in confidence, on a one-to-one basis with representatives from the: Community Wardens; Street Force; Burngreave Advocacy Project; Police; ASB team; Burngreave Drug Project and Victim Support.

Also don't miss your chance to win one of four car steering locks in our free raffle on the night! The open evening will take place 22nd June at Firs Hill School between 6–8pm. Child minding facilities will be available.

## Theme meetings

Everyone is welcome at the following meetings:

**Crime:** 22 June, Firs Hill School, 6–8pm (*Date changed due to possible football fixtures.*)

**Education:** 14 June, St Peter's Church Hall, Lyons Street, 6.00–7.30pm

**Employment & Enterprise:** 7 June, Ellesmere Children's Centre, 1.30–3.30pm

**Environment:** 22 June, Pitsmoor Methodist Church, 6–8pm

**Health:** 12 June, St Peter's Church Hall, 6.00–7.30pm

**Housing:** 8 June, BNDfC Information Shop, 6–8pm

**Over-arching:** 13 June, The Furnival, Verdon Street, 6–8pm

# A New Deal for Burngreave



## Forum House

**In January this year Forum House was in receivership. The receiver was looking to sell the property and it was suggested that the market rate could be in excess of £750k. BNDfC negotiated with the receivers and offered £450k, which would come from the money already allocated for the development of Spital Hill through the Transformational Projects.**

At a meeting in January the Board Members present agreed that it would be a good idea to keep these resources in community ownership and prevent other commercial interests taking on the property. Chief Executive, John Clark advised the Board that no further costs would be incurred by BNDfC as the office element of the building required no further works.

Forum House was purchased as part of the BNDfC Asset Strategy. The principle underpinning the strategy is that assets remain in community ownership beyond the lifetime of the BNDfC programme. The building will provide a base for the key initiatives aimed at increasing skills and employment opportunities for residents of the area. Jobnet@Burngreave is too small to house the expanded range of providers and services. Forum House will act as a one-stop-shop and include: Burngreave Opportunities, Community Learning Campaign, Supporting Business & Enterprise along with a base for the Streetworx project and the Burngreave Youth Council with is currently being developed. The decision to go ahead with the purchase was made at the February Board meeting.

An article regarding BNDfC Asset Management Strategy will be in a future edition of the *Messenger*.

## Refugee Day

**Supporting refugees across Sheffield  
Saturday 24th June, 2-6pm at Ellesmere Green**

Help celebrate the enormous contribution refugees make to Burngreave. There will be entertainment for all the family including performers, stalls, dancing and food and information and advice for refugees.

For more information contact: from Burngreave Community Action Forum – Patrick Edwards 250 2716 or Nolian Rankin 272 8008, NHS – Norah Brown 271 6978 or from BNDfC – Ophelia Clarke 292 0459.

## Adam's design success

Adam Deeley, a 15-year-old student at Firth Park Secondary school, has just completed a two week placement at MM Design, a leading graphic design agency in Sheffield.

Adam won the opportunity to work with MM Design to design a new logo for the Burngreave Business Forum in a competition at the Burngreave Enterprise Event earlier this year. Burngreave Business Forum is a 50 membership organisation that works to support businesses in the area.

"I now have more skills and experience which will really help me in future. Working alongside professionals has raised my expectations on my own work. When I have completed my studies and graduated from University I would like to start my own business. The work over the past two weeks is what I expected but the experience has been much, much better than I ever expected," said Adam.

MM Design's creative director, Patrick Ross was very impressed at the speed with which he adapted to the professional environment.

"He grasped the new technology very quickly and used them very well to design a professional logo. I can't express how astounded we were at his ability to grasp a concept and then turn it into reality."



## Contact

**Alison Reid  
Communication Manager**

BNDfC  
1st Floor  
Speedicut Works  
Harlestone Street  
Sheffield  
S4 7QB

[alisonreid@bndfc.co.uk](mailto:alisonreid@bndfc.co.uk)



contact: 276 9134

# Burngreave Area Panel

## Walking

In June last year this column addressed, at some length, the number of cars arriving at a local school dropping off or fetching children at 9am or 3pm. Owlter Brook school staff and some parents have been thinking about how to tackle this and at the end of April launched their first 'Walk on Wednesday' day – well over 200 children walked and so were rewarded with a prize.

Firshill and St Cath's parents have recently planned a 'walk and stride' campaign to persuade parents not to drive to school at all – or certainly to park well away from Orphanage Road or Firshill Crescent. This, combined with new double-yellow lines, should start to help more walking.

### Keep walking

It might be a new experience for young children, but some older citizens of Burngreave have been walking for years and years. Many older Yemeni men walked everywhere in Yemen before coming to Sheffield, always walked to and from work until retirement and nowadays walk from home to the shops, to mosque and to the community centre. It would be interesting to confirm that despite the tough working conditions they endured, their health is good partly because of their continual walking.

But it's not just older Yemeni men who walk down Spital Hill into town. It must be one of the most well-worn pavements coming down to the Wicker, up to the markets and town from any residential neighbourhood. Obviously at present, the bus diversions have made it quicker to walk – and certainly cheaper than the £1 fare from Gower Street. But will the new



*Pupils from Firs Hill School collected a STAR award for their school travel plan from Lord Mayor Jackie Drayton at the Town Hall on Tuesday 22nd May.*

inner Relief Road make it harder to walk into town? Colleagues in transport planning say that the new road will be one of the most 'pedestrian friendly' roads – despite the number of carriageways to cross!

### Walking groups

Local walking groups are springing up around the area, including health walks from Pitsmoor Surgery on a Tuesday afternoon meeting at 1.30pm; 'Burngreave Ramblers' walking most Saturdays in Derbyshire (see page 4 for details); 'Black Men Walking for Health Group', who walk on the first Saturday of the month, and 'BME Ramblers', contact

Maxwell for more information about both of these groups on 281 2320.

### Clearing the way

But walking, as we know doesn't mean going to Derbyshire. And one small contribution that the Area Panel's making to walking – and trying to reduce the 41 premature deaths a year in Burngreave caused by inadequate exercise – is to open up local paths. With the local Ranger team, we'll be improving the surfaces and opening up site lines on the local paths and tracks – across Smithy's Field; over Parkwood Springs and through Roe Woods.

Watch out for a walking and cycling audit that will be taking place in the Burngreave and Fir Vale area to see how we can improve the local environment for walking. For more details contact Tracy Allatt or Andy Godson at the Council's Transport Planning Team on 273 4479.

### Bring out your rubbish

The first 'Bring out your rubbish' days are happening in June. First week up in Fir Vale, and the second week around Barnsley Road/Norwood Road/Roe Lane, Firshill estate and Cookswood Road/Shirecliffe Lane. Normal rules apply. Green City Action will deliver leaflets a few days before. Thanks to Streetforce and Veolia (ex-Onyx). Every house in Burngreave and Fir Vale will have this 'bring out' this summer.

No other area enjoys this opportunity – but your Area Panel's decided to make this a priority! And the hanging baskets and planters will appear soon from Streetforce and the Area Panel.

## Councillors' Surgery Dates

Your local councillors, Jackie Drayton, Ibrar Hussain and Steve Jones (pictured left to right below), share surgeries on a rota basis.



Councillors' surgeries are on the second and fourth Saturday mornings of each month, in Burngreave Library from 11.00am to 12.00 noon unless otherwise stated:

- 10th June: Steve Jones  
12.15 to 1.00: Firshill Tara
- 24th June: Ibrar Hussain
- 8th July: Ibrar Hussain  
12.15 to 1.00: Firshill Tara

### Next Area Panel Meeting

- Thursday 27th July – 6–8pm, venue and agenda to be confirmed.





Children's Centre

## Experienced Finance & Monitoring Officer

Fixed-term contract until August 2007

**Salary: £15,000**

**Hours: 37 per week**

This is an excellent opportunity to join a thriving community enterprise. We provide a high-quality service for children and parent/carers in Burngreave.

Working experience of IT is essential.

Applicants should have proven skills in managing financial and monitoring systems, Microsoft Excel and Word.

Previous experience of managing the administration of a small organisation will be an advantage. Candidates should be able to work to strict deadlines.

**Closing Date: Monday 26th June 06**

For an application pack and informal enquiries  
Please call **Sharon Brown** on **(0114) 275 1817**.

BWRC is supported by:

*Sheffield City Council*

*Early Years Education & Childcare Service*

*Burngreave New Deal for Communities*

*South Yorkshire Key Fund • New Opportunities Fund*



## Partnerships for Older People Project

### 16 Community Link Workers

**£17,359 per annum**

+ pension + loyalty bonus

We are about to launch an exciting new project designed to ensure vulnerable, isolated older people have the services they need to live independently.

We need to appoint 16 people who like a challenge and are committed to improving services for older people to be based in neighbourhoods around the city.

You will be able to work confidently with individuals, groups and organisations and have a flexible, 'can-do' approach. You will be good at problem solving, willing to try new ways of working and committed to sharing learning. Comprehensive training will be provided.

Please contact **Sarah Hancock** for an application pack on **(0114) 250 2850** or e-mail **sarah.hancock@ageconcernsheffield.org.uk**

Closing date for applications: **20th June 2006**  
Longlisting: **28th June 2006**

*Age Concern Sheffield is committed to equal opportunities and welcomes applications from all sections of the community.*

## Trainee Apprentice Multi-media Worker/ Office Worker

(16-18 year old)

**Salary: £5,200pa (pro rata)**

**Hours: 22.5 hrs per week (covering 3 days)  
7.5 hrs per day**

**Duration: 6 months**

**Are you interested in:**

- Processing images using Photoshop?
- Creating and editing for our news portal?
- Checking the authenticity of news stories for inclusion in our monthly newsletter?
- Representing the views of KMP to other organizations in Sheffield, across the region and nationally?
- Participating in local and regional decision making structures?
- Training and supporting others in the use of web publishing and broadcasting on our premises and other locations?
- Reception work, fielding enquiries from the public by phone and in person?
- Office work, keeping records, filing, operating a photocopier and laser printer etc?
- Working in a team with others, but also on your own initiative?
- Earning £60 per week for six months training?

For more information contact  
**Adam Barnes** on **(0114) 266 5907**  
**Deadline: 24th June 2006**

KMP, 143-145 Crookesmoor Road, Sheffield S6 3FP



## Job Vacancy Fir Vale Community Forum Administrator

**18½ hours per week**

**Salary: £14,000 (pro rata)**

**Short-term contract: July-December 2006**

*The Fir Vale Community Forum is an umbrella organisation that works to support the local community and groups within Fir Vale.*

The Forum is looking to recruit an administrator. The successful candidate will provide the Forum committee members and staff with support in the following areas:

Producing letters and Reports

Manage filing systems

Deal with enquiries

Conduct mailouts

Maintain financial information

Minute meetings

And any other administrative duties as required

For further information, an informal discussion or an application pack please contact:

**Andrea Martin**

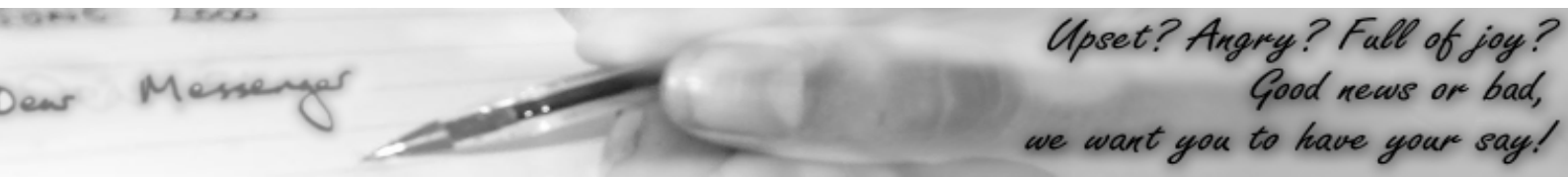
Neighbourhood Development Officer (working with Fir Vale Community Forum), 54 Owl Lane, Sheffield S4 8GA

a.martinfirvale@btconnect.com  
**(0114) 244 3370**

Closing date for applications  
**Monday 26th June at 5pm**

Interviews to be held: **Monday 3rd July**





Dear *Messenger*

It gave me great pleasure to read the article in the April *Messenger* regarding the Wembley Playground at the bottom of Sutherland Road. I spent many a Saturday afternoon playing there in the late 1940s and early 1950s. Trying to get the swings as high as possible to a point where the chain would bend and leave you in free fall for a couple of seconds, having six kids on the rocking horse and seeing who could stay on the longest, the back seat being the most perilous. Of course with today's safety rules these types of activities would not be tolerated, oh what the kids of today are missing out on.

We also used to play at the playground in Abbeyfield Park which had much the same equipment plus a slide. I took my children there in 1972 on their first trip to Sheffield. We live in Australia, and they had never seen rocking horses like the ones there. I trust that playground still exists and is kept up along with the Abbeyfield Park resurrection.

During that same visit I also took them to the Public Swimming Pool across the road from the Wembley Playground. For some 12 years I hardly ever missed having a swim at least once a week at the baths. It was sad to see that it had been pulled down, but even in 1972 it was showing its age. More important for the community in those days would have been two services:

- 1 The slipper baths, where for 6 pennies you could have a hot bath. Bear in mind none of the houses in the area had a bathroom or in fact hot water at the kitchen sink.
- 2 The wash house, where for about 2 shillings the week's washing could be done in large washing machines and then, mainly the bed sheets, could be dried in huge steam dryers.

Old prams and four-wheeled barrows could be found in most back yards which were used to carry the washing down to the wash house and back. My mum, who owned the Petre Street Post Office, used to dash down about 9.30 on a Thursday morning with the washing and load a machine, she would then return to the shop. Fred Shaw the attendant would empty the washing machine and put her sheets into a dryer so by 1.00pm, which was early closing in those days she could return and take the sheets out of the dryer and bring them home. I know Fred was a friendly guy but I often wondered whether he received a small remuneration from her for his trouble.

Gordon Lawton, Renmark, South Australia

Dear *Messenger*

United we should stand for divided we have fallen.

I'm writing in response to the letter about New Deal and Burngreave Community Action Trust (BCAT). The sad truth is that when New Deal was being established, with community participation and consultation, all that we said did not have any real weight when it came to the crunch. Burngreave Community Action Forum (BCAF) wanted, with community support, to have a majority say in what happened with this alleged 'community fund' of New Deal money. We were told that we would only have seven of the fifteen votes thus ensuring that New Deal would be able to claim democracy but know it would always be able to put its agenda and plans into practice whatever the democratically-elected representatives thought.

Pretending that there is democracy when patently there is no real power in the community hands at all, was I think a deliberate deceit. Even though BCAF/BCAT may be viewed as undemocratic this organisation listens and fights to represent TRUE community against this UNDEMOCRATIC central government 'quango'.

New Deal believes in Communities (plural) and defined by ethnic and other dubious definitions, it divides us. Whereas BCAF/BCAT defines community (singular) as geographical and therefore totally inclusive and is unifying.

Name and address supplied

Dear *Messenger*

The statements printed in May from the BCAT and BCAF, were not in response to statements made by John Clark in the April issue. They were submitted for inclusion in April but not printed.

In response to the letter in May, BCAT would like to point out that Trust membership is open to all living or working in the Burngreave area. This includes the whole of the Burngreave ward, not just the BNDfC area.

The BCAT AGM and Forum activities are publicised throughout Burngreave through leafleting, media, and the BCAF newsletter. The announcement of this year's AGM can be found in the May edition of the *Messenger*.

Burngreave Community Action Trust (BCAT)

**Spital Hill Plaza**

**ABESHA Ethiopia**

Traditional Ethiopian clothes, CDs, DVDs  
Spices, Coffee Cups and Incense Sticks

**Opening times:**  
Mon-Sat: 10am-7pm  
Sun: 11am-5pm

0793 183 6460 or (0114) 242 0311



**Simply Red**

*'Flowers for all occasions'*

184 Barnsley Road,  
Sheffield S4 7AF

Wed 10.00am-5.30pm  
Thu 9.30am-5.30pm  
Fri 10.00am-5.30pm  
Sat 9.30am-4.00pm  
Sun 9.30am-1.00pm

**(0114) 244 7007**  
**0770 215 9400**



# Jus Hire

## Prestige, 4x4 and Sports Car Hire

*For Weddings, Birthdays, Anniversaries  
or even a fun day out!*

### Cars available to hire:

BMW M3 SMG Convertible  
Porsche Cayenne (fully loaded)  
Porsche Boxster  
Mercedes S-Class 320cdi  
Mercedes CLK Convertible  
BMW 745 Sports  
and much more...



Based at **Jus Connexions**  
25 Staniforth Road, Attercliffe, Sheffield  
**(0114) 244 8003**

**Opening times:**  
**Mon-Sat: 10am-6pm**  
**Sun: By appointment only**

*Terms and conditions apply, subject to availability. Minimum age restrictions apply (from 21 and over). Call for further information.*

# BURNGREAVE BUILDING Co.



### New Deal Contracts Undertaken

33 Melrose Road, Burngreave, Sheffield S3 9DN

email: burngreavebuilding@hotmail.com

www.burngreavebuilding.co.uk

FREE ESTIMATES ~ FREEPHONE:

**0800 083 0669**

0114 275 1281

Mob: 07977 96 41 42



## Improve your health and your environment!

Get out into the fresh air and get active by taking part in gardening and nature conservation activities in Burngreave's parks and green spaces. Sessions last between two and four hours and are free. Women Only sessions are available.

By taking part in the **BTCV Green Gym** you can improve your health and fitness, reduce the risk of coronary heart disease, make new friends and feel more positive about life. You can also make a real difference to your local environment.

For more information call BTCV on  
0114 272 3591 or email s.hughes@btcv.org.uk



## Tandoori Takeaway & Kebab House Fish & Chips

### Special Daytime Menu (Mon-Sat)

From 11.30am-5.00pm (Collection only)

#### Lunch Specials

Cheeseburger or Vegburger or Chicken Burger  
& Chips and more... Only £1

#### Sandwiches

Sheik Kebabs, Shami Kebabs, Donner Kebabs or Chicken Tikka with  
Salad, Mint Sauce and Chilli Sauce... Only £3.50

Sausage, Chips, Donner Meat, Peas or Curry,  
2 pieces of Chicken with Chips and Coke... Only £2.50

#### Pop-in Special

Fish, Chips, Sausage, Donner Meat, Peas, Curry or Gravy... Only £4.50

#### Free delivery service

On all orders over £7.00 within a 3 mile radius

#### Open

Mon-Thu: 11.30am-1am • Fri & Sat: 11.30am-2am • Sun: 5.30pm-1am

7 Gower Street, Sheffield S4  
272 2285 or 296 6612

## YOUR LOCAL ACCOUNTANTS

### Albert Winter & Peter Dearden

320 Petre Street, Sheffield S4 8LU

Telephone: 0114 261 1695

- \* SELF ASSESSMENT RETURNS \*
- \* COMPANY, PARTNERSHIP & SOLE TRADER ACCOUNTS \*
- \* BOOK-KEEPING \* PAYROLL etc. \*

**We offer a full range of Accountancy Services**

## Landlords

A discounted traders list!

Dump it sites!

A Landlord Housing Benefit Advice Line!

A list of companies giving discounts!

A free landlord training course!



To find out more, drop in

Every Wednesday afternoon, 2-4pm,  
BNDfC information shop, 131 Spital Hill



Or contact Daniel Massey, Dennis Tester  
or Mohamed Hujaleh on 273 5134 or 273 4680

Email: prp@sheffield.gov.uk



Are you a Small Grant Fund or Creative Burngreave funded project and want some FREE web space?

FREE webspace for projects

Then telephone the Messenger on 242 0564, or visit [www.bndfc.co.uk/projects-online/](http://www.bndfc.co.uk/projects-online/) and find out about keeping your own section of the BNDfC website up to date.

BNDfC

# Shear Illuzionz

Now Open

Gents Cut £3 • Ladies Cut £4  
9 Furnival Gate, Top of Moor,  
(opposite Debenhams), Sheffield S1  
0789 900 1285

## Are you strong enough? Specialist carers needed



Community Placements Sheffield, run by the children's charity NCH, is working in partnership with the Sheffield Council to provide specialist foster placements for young people, aged 10-17 years, with complex and difficult life histories. We need carers with employment-based or voluntary experience working with young people with challenging behaviour, but they do not necessarily need previous experience of fostering.

### Each carer receives

A fee of up to £492pw plus a fostering allowance of up to £180pw • 24-hour support  
Regular support visits comprehensive training opportunities  
Up to 4 weeks paid respite and retainer fee • Generous tax allowances

### Interested?

Call (0114) 250 3060 or 0845 200 5162  
or email [necpsheffield@nch.org.uk](mailto:necpsheffield@nch.org.uk)

**AVAILABLE NOW!**

## WHAT » ACTIVITIES ARE IN BURNGREAVE ?

to pick up your FREE GUIDE - please contact Activity Sheffield on  
**0114 273 4266**

# Prime PIZZA

and PRIME CURRIES

Open 7 days  
4.30pm-Midnight

**Free** delivery on orders over £7.00 within a 3 mile radius

All Pizzas have a fresh base of Mozzarella Cheese, Special Recipe Pizza Sauce and Italian Herbs cooked to perfection!

**Create your own Pizza!**

We also offer Burgers, Southern Fried Chicken, Kebabs, Garlic Breads and Curries

**243 9786 or 243 2442**

38-40 Firth Park Road, Firth Park, Sheffield



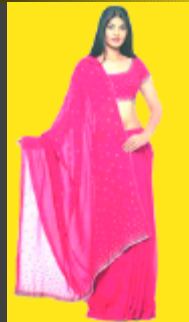
## Sundas

**Now Open!**

118 Page Hall Road  
(opposite Fir Vale School)

Open 10am-8pm  
(7 days a week)

Unique variety of casual ready-made clothing for children and adults  
Large variety of loose fabric, shawls and jewellery  
Imported fabrics and linen available  
Tailoring service available



For more information contact:  
**0799 924 7624**



## Wicker Pharmacy

OPEN LATE  
every day of the year!

55-59 The Wicker, Sheffield

## HAWKINS PHARMACY

Your Community Pharmacy  
NHS & Private Dispensing  
Prescription Collection & Delivery  
Tel: 275 49 20 For full details  
149 BURNGREAVE ROAD

## SM Gas Services

Corgi Registered  
Domestic Work  
Break Down Repair  
Installation  
Landlord Safety Certificate  
(0114) 258 1582 • 0788 678 8528