

# Burngreave Messenger



**Voice of the Burngreave Community**

Including: Pitsmoor, Ellesmere, Carwood, Firhill, Fir Vale, Pye Bank, Shirecliffe and Woodside

## Rec relaunch leads the way

**Verdon Recreation Centre was reopened last weekend by Sports Minister and Sheffield Central MP Richard Caborn. The Lord Mayor came along, saying he was here so often, celebrating the achievements of the community and New Deal, he thought he'd change his title to Mayor of Burngreave. The refurbishment, funded by New Deal in partnership with the Council, is the first of New Deal's capital projects.**



### **£6 million plan for Spital Hill**

The reopening of Verdon Recreation Centre is the first result of capital spending on New Deal's Transformational Programme, combining plans for better facilities with plans for better services. The programme includes £2.1 million investment in Spital Hill's 'public realm', £2.3 million to renovate Sorby House and the Vestry Hall, and work at the Adventure Playground, Abbeyfield and Osgathorpe Parks. As this £6 million transformation gets going the New Deal Year Five Plan (April 2005–06)

contains £10 million of spending, a big rise from last year. For more detailed information about Year Four spending and the Year Five Plan see pages 4 & 5.

### **Sporting splendour**

John Clark, New Deal Chief Executive, said Verdon Recreation Centre was now a quality facility to be proud of. It has a sports hall and training room so local people can get qualifications, deliver their own sessions and get employment, including jobs at the planned new Sports Centre on Petre Street. New Deal paid for the refurbishment and the Council invested in adaptations to the changing rooms and access, making it the first Council facility in the city to be compliant with the new disabilities access laws.

The centre is being run by Activity Sheffield (formerly known as Com Rec) with support from New Deal and will be open seven days per week for sports and healthy activities. Admin worker Shazia Noor explained the Centre was now taking bookings from groups (Sports Hall £15/hour, training room £10/hour). The office is open from 9am–12 noon and 1–4pm, Monday to Friday, or people can ring her on 249 1626.

Verdon Rec has been a centre for sports, events, meetings and social occasions since it was built by the Sports and Sheffield Councils in 1988. Councillor Steve Jones recalled times when people were fed up that the Rec wasn't accessible and had become underused and vandalised, but said it was now a state-of-the-art facility. The centre has secure funding from the Council and New Deal for three years, but he explained the long-term plan is for the Rec to be returned to local control.

### **Election year**

As well as these major building works, Year Five will see elections for the Community Reps on the New Deal Partnership Board and they want your views on how the elections should be run (see pages 14 & 15). The Partnership Board sets the direction for New Deal and awards the funding. Last year New Deal became a limited company, so the Board members are also directors and New Deal Ltd can run its own projects and own property like Sorby House.

Another change in New Deal last year has been the creation of Theme Strategy Groups (with a closed, nominated membership) who now approve projects in their early stages instead of the Theme Groups (which are public meetings). The Year Five Plan is built on consultation with Theme Groups throughout the year and every resident is having details of the Plan delivered to their homes.

You can comment on the plan until 14th February at the New Deal Information Shop or the Theme Group meetings, by email ([infoshop@bndfc.co.uk](mailto:infoshop@bndfc.co.uk)) or by visiting the New Deal website [www.bndfc.co.uk](http://www.bndfc.co.uk).

**by Mark Lankshear**

## Burngreave Green Environment Programme Events



### Sunday 13th February – Love in the Park

1.00–4.30pm. Meet at Osgathorpe Park Playground. Can't afford High Street prices for a Valentine's Day card? Come to the Park and let the Greenwatch Rangers help you make something special for the one you adore. For further details contact the Greenwatch Rangers on 245 9749.

### Wednesday 16th February – Hands on Craft Day for Women

11.30am–1.30pm. Verdon Street Community Centre. Try your hand at a new craft or watch other women demonstrate crafts from all over the world. Organised by the Burngreave Rangers on 278 9651.

## Abbeyfield Park Stables Workshops

### Making Beaded Dream Catchers

Saturday 19th February, 10.00am–4.00pm  
Make traditional dream catchers from seed beads.

### Awakening the Spirit: Art and Gardens

24th February, 17th & 24th March, 9am–3pm  
A course of three workshops to develop your own art skills with guided visits to gardens of diverse cultural and spiritual significance. Transport provided.

### Air, Food and Water

Saturday workshops on 19th and 26th February, 5th March, 10.00am–5.00pm  
Exploring our impact on the environment by using each of the above themes and working with sustainable art materials.

### Map Reading

26th & 27th February, 9.30am–4.00pm  
Suitable for complete beginners. You will learn how to read a map, plan a route and apply your knowledge on a walk in the Peak District. Transport from Abbeyfield Park House provided.

### Birdwatching for Beginners

Friday 4th March, 10.30am–4.30pm  
Come along and learn the basic skills for finding and identifying the many species of birds in Burngreave and Pitsmoor.

For more information about any of the above workshops, call Green City Action on 244 0353.



## Burngreave Voices Family History Funday Thursday 17 February, 1–4pm Burngreave Library Free drop-in event

### Ever wanted to trace your relatives? Or find out more about your family?

Come along to this session offering help to get started.

There will also be fun activities for children:

- a treasure hunt
- writing with quill pens
- and lots more!

For more information contact  
Nicky Wilson on 0114 276 1900 or at  
[nicola.wilson@sheffieldgalleries.org.uk](mailto:nicola.wilson@sheffieldgalleries.org.uk).



Burngreave Voices: Our Stories Celebrated is a Sheffield Galleries & Museums Trust project in partnership with Sheffield Libraries, WEA and Sheffield College.

## Free Computer Drop-in Sessions

The Spectrum Centre  
105 Brunswick Road

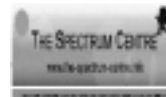
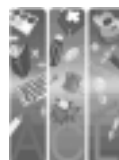
Monday–Friday, 3–5pm

Everyone is welcome

Trained staffs are on hand to help you learn new computer skills in a friendly and informal atmosphere.

- On Tuesdays there will be a **women-only** session.
- On Thursdays a **qualified careers and training advisor** will be on-hand to give advice and information on courses and employment.

Call Sagr Ali Saleh at The Spectrum Centre on 275 4571 or just drop in from Monday 10th January onwards.



# Beacon Status for Centre

The Yemeni Economic and Training Centre, which delivers services in Burngreave, Fir Vale and Attercliffe has gained Beacon Status from the Home Office.

Abdul Shaif, Chief Executive of the Yemeni Community Association which runs the centre, told the *Messenger*:

**"It's a fantastic achievement for the Yemeni Community Association and the Yemeni Economic and Training Centre. It demonstrates we are meeting new challenges. We appreciate the contribution of our funders including the Home Office, New Deal, Sheffield College and European funding. We are especially grateful to the staff at the centre who have been magnificent."**



The award assessed delivery, quality assurance, and relationship with clients. The centre, which provides advice, an ESOL programme and family support for the Yemeni community, was awarded a 5-star rating and is the only Yemeni organisation in the country to be given this status. The Beacon Status report stated that they excelled in all indicators, were highly effective, exceeded original targets, and had significant user involvement.

## Inderjit Bhogal OBE



Local family man, Rev Inderjit Bhogal, was awarded an OBE in this year's New Year's Honours List for services to interfaith relations. "It was a total surprise," said Inderjit when I met him. "It's an acknowledgement that the work I do has national significance. I'm also glad for Pitsmoor; it's not often this area gets positive recognition."

Inderjit is a Minister for the Methodist Church and in 2000 was elected their President. "It surprised a few people – electing an Indian man to be the head of the Church." Sitting at his kitchen table Inderjit says this is his office, and a lot of his work is featured around the principles of food. "I can't believe that there is still starvation in the world, when one half of the world dies from obesity and the other from starvation." He now

works for Christian Aid and their current campaign is called 'Make Poverty History'.

Inderjit is an extremely active campaigner for various causes. He has walked from Sheffield to Downing Street to raise awareness about homelessness. He was a founder of Homeless and Rootless in Sheffield and is joint chair of the Sheffield Stop the War Coalition. Locally he also organised an interfaith walk, 'A Pray for Peace', visiting all the churches and mosques around Burngreave.

by Gaby Spinks

## BACRA searches for status

Bungreave African Caribbean Resource Association (BACRA) held its first event in December. All those who attended the café on Earsham Street were entertained by an array of activities from a DJ workshop to an arts and craft stall, also a carpentry making display conducted by Raul Marsden. The Bungreave Hall of Fame was also on display courtesy of the Listen to Us Project. Free hot food and a tour of the building showed everyone attending the potential Earsham Street has for expansion. Chair of BACRA, Wendell Smith explained:

**"BACRA's aim is to establish itself as a recognisable association that can cater for the needs of all members of the African Caribbean section of Bungreave."**

by Rob Smith



### Eid Mubarak and Happy New Year!

2005 will be an important year for the Messenger, in April we will celebrate our 50th Issue! Many thanks to the Area Panel for the award (page 16) recognising the five years of hard work that have gone into establishing a strong voice for the community.

It can be great fun putting the Messenger together each month and you learn a lot about the area and all kinds of media. This year we want to help more residents get involved in making the Messenger better than ever. To find out more about the different ways you can get involved turn to page 12.

We are also trying something new in February. At the first editorial meeting each month we want people come along and help us review the last issue and debate what should go into the next one. Come along to Abbeyfield Park House at 6.30pm on Wednesday 2nd February, or if you've got ideas but can't be there, please get in touch with the office.

### Messenger Info

Meetings: 6.30pm, Wednesday at Abbeyfield Park House  
Editorial: 2nd February  
Management: 2nd March

All welcome.

Copy deadline: 16th February

Burngreave Messenger Ltd  
Abbeyfield Park House  
Abbeyfield Road  
Sheffield S4 7AT

(0114) 242 0564

messenger@burngreave.net

The Burngreave Messenger is a community newspaper, funded by New Deal, with editorial independence. We aim to increase and encourage communication in Burngreave. Each edition is put together by an editorial team who write articles not otherwise credited. This month's team: Farzana Ahmed, Kate Atkinson, Annie Blindell, Clare Burnell, Martin Currie, Yasmin Dhoomun, Mark Lankshear, Jamie Marriott, Steve Pool, Carl Rose, Rob Smith, Gaby Spinks, Lisa Swift and Paul Taylor.

All content is copyright Burngreave Messenger Ltd or its voluntary contributors, not to be reproduced without permission.

# New Deal claim Year Four success

**As Burngreave nears the end of the fourth year of the 10-year New Deal regeneration programme, spending and satisfaction are up (according to the household survey). We are now in the top third of New Deals nationally. As New Deal start consulting on their Year Five Plan, we bring you news of the plan and how the money has been spent in Year Four.**

New Deal Chief Executive John Clark told the *Messenger*, "It's been a good year. Burngreave New Deal is now seen as a 'safe bet', that can spend money effectively and give a good return on the investment." He highlighted the policing and community safety initiatives that have reduced crime and the fear of crime, the expanded 'Advancing Together' deal with the Council and the sporting achievements as examples of New

Deal making a real difference.

"The major commitments and investments have been made now," John told us, explaining that existing projects and improved services from Year Four are continuing and should become increasingly visible and effective as the full programme gets up and running. "The challenge now is to make sure all the projects deliver and work well together," he said.

There are still some gaps. Health spending remains low due to delays in projects getting started. The youth strategy is still being discussed with Sheffield Futures, while the childcare strategy should be finalised soon, but overall the majority of projects are in place, paving the way for the big 'transformational' capital projects to get going in Year Five.

## Where did the money go in 2004?

These figures show what New Deal put in the Year Four plan (April 2004-05) last year, what they expect they will actually spend and what's in the plan for next year. The figures are all provisional at the moment. Year Four won't finish until the end of March. The Year Five Plan is only a draft at the moment and remains open to public comment until 14th February. After that it will be discussed and approved by the Partnership Board and then submitted to the Government. When the figures are all finalised we will make every effort to publish them on our website.

|                         | Plan Y4             | Projected spend Y4  | Plan Y5             |
|-------------------------|---------------------|---------------------|---------------------|
| Education               | £1.0 million        | £1.4 million        | £1.1 million        |
| Health                  | £670k               | £250k               | £430k               |
| Environment             | £1.9 million        | £1.3 million        | £4.6 million        |
| Overarching             | £1.4 million        | £1.7 million        | £1.2 million        |
| Employment & Enterprise | £650k               | £550k               | £790k               |
| Housing                 | £520k               | £150k               | £575k               |
| Crime                   | £640k               | £750k               | £585k               |
| <b>Total</b>            | <b>£6.8 million</b> | <b>£6.1 million</b> | <b>£9.3 million</b> |

## Who gets the money?

All the money awarded by New Deal is intended for the benefit of residents, and there are well over 100 individual projects now. Different pieces of work are done on behalf of New Deal by a wide range of groups, some of them Burngreave-based community organisations, some statutory or city-wide organisations like the Council or Police and some are being run directly by New Deal Ltd. This is how the funding gets allocated overall. Note: an additional £750k for New Deal management and administration is not included in the Year Five Plan figures.

|                                       | Plan Y4      | Projected spend Y4 | Plan Y5  |
|---------------------------------------|--------------|--------------------|--|
| Burngreave-based Community Groups     | £2.6 million | £3.2 million       | £2.1 million<br>(60 projects)  |
| Statutory and city-wide organisations | £2.8 million | £2.4 million       | £4.7 million<br>(36 projects inc £2.1 million Spital Hill 'public realm')                |
| Internal New Deal Projects            | £1.4 million | £450k              | £2.5 million<br>(12 projects inc £2.3 million for Sorby House & Vestry Hall renovations) |



# Year Five Plans

## Environment – £4.6 million

Includes £2.1 million investment in the Spital Hill 'public realm', including a market on Ellesmere Green, £2.3 million to renovate the Vestry Hall as a Learning Centre with theatres and high-tech media facilities and Sorby House to provide more services for the community as well as Spital Hill renewal and maintenance, other environmental maintenance and improvement, community involvement and recycling projects.



## Housing £575k

Includes the transport strategy and housing work on Catherine Street.



## Overarching £1.2 million

Includes communications, children and young people, arts, community engagement and events.



## Employment & Enterprise – £790k

Includes Apprentice and ILM schemes, a range of training, job and career support, small business support and the Language Support Agency.



## Education £1.1 million

Includes a wide range of study support projects, work with excluded children, sports, language support, Community Learning Campaign and other adult education initiatives.



## Crime £585k

Includes New Deal Police team, Wardens, Anti-social Behaviour Team, Domestic Abuse Project and community and home safety projects.



## Health £430k

Includes Drugs Project, support and advocacy and health promotion projects.



## Are we 'community involved'?

The early days of New Deal in Burngreave were marked by exceptional levels of community involvement. In 2001 the first Partnership Board election turnout was 52% – the highest ever in the country. By 2003 it had dropped to 23%, concerns were also raised about how projects were being approved without community involvement.

The 2004 household survey showed that 20% of Burngreave residents volunteer for local organisations and, of the 270 jobs created by New Deal, nearly half have gone to local people. Many of us are clearly working hard to transform our community, but are we still involved in deciding how the New Deal money is spent? Residents can get involved in discussions about New Deal through Theme Groups, the Information Shop and other consultations, but this is not really where the decisions are made.

At the moment the New Deal Partnership Board, with ten Community Reps, oversees the whole programme and gives projects their final approval. The Executive and staff team run the consultations, write the plans and put them into action. Since 2003 the Community Reps have

provided what John Clark described as a "strong partnership with decision making stability," but he also explained that the Government now talked about 'Community Involved' Partnerships, not 'Community Led' as New Deal used to be described.

A review of the election process is now nearing completion (pages 14 & 15) and a new system has been introduced for the early stages of project approval. New 'Theme Strategy Groups' have taken over the decision making role from the Theme Groups. They are made up of two nominated residents, statutory workers and community organisation reps for each theme. The Theme Group meetings are still open to the public and help debate and co-ordinate the work of the New Deal.

### Balancing act

Richard Caborn MP, speaking at the re-launch of Verdon Recreation Centre, emphasised the Government's continuing belief that regeneration had to empower individuals. "Developing local leadership is key to keeping the respect of the community and rebuilding the social fabric," he said, but also agreed that the approach had changed. "In the early days of New

Deal we didn't get the balance right, people were given power without responsibility and sometimes it was very divisive. Local people do need power, but like all elected representatives, they also need to be accountable."

The Year Five plan contains much more spending than previous years, and major building work that will affect us all. It will also mean New Deal Ltd will own and run two large buildings on behalf of the community. Many in the community now have years of experience, not only of the realities of living here but also of working to improve the area and its services. Their practical knowledge needs to be respected and heard if the New Deal investments are to become community assets, not liabilities.

The Community Reps on the Partnership Board are a vitally important part of the balance that is needed between the community and professionals who work here if the money is to be spent wisely and fairly. To find out more about the upcoming Community Rep elections turn to the New Deal pages, 14 and 15.

by Mark Lankshear

# Hidden costs on the Hill

## Following local traders' discontent about their newly-installed green shutters, I went back to see how some had been getting on.

"I'm annoyed," said Nellie. "The company charges to repair faults, £95 or £150 after 5.30pm. These charges weren't revealed before fitting." Mr Abdullah of Ellesmere Road Newsagents said he'd been billed £167 for an emergency call out. "I disputed this and went to see Saghir of New Deal, the issue is still not resolved."

SR Raja and Nephew said "The shutters aren't that good – the controls are faulty and when they break it's the whole day's business done." Multiple shop owner Mr Shah explained the remotes pack in and cost around twenty five pounds each. "Defence Security Shutters (DSS) got the main lump of the work. In my opinion they've overcharged New Deal for the job."

I spoke to DSS Director, Mr Sufian Abdullah. "Of the 100 products we supplied there've been issues with six, many are teething problems and any outstanding issues are being dealt with on an individual basis." He added that the company felt their call out charges

were reasonable. I asked Mr Abdullah why the charges had been withheld from the original quotes. He informed me, "We were never asked."

Local businessman Nigel Pawarna is annoyed, he feels New Deal have lined the pockets of this business. "I have two shops and had shutters installed for £1,200 just months prior to this scheme. New Deal allocating five grand per shop somehow means we now have shutters installed by this company, who charge over £3,000 each." Lee of Lee's Appliances said he wasn't happy, "I got two quotes – the other from a company across town that was cheaper, but I had no say in who did the work, New Deal had already made their mind up."

I asked Saghir Ahmed, New Deal Business Champion, if he felt the Security and Environmental Scheme had gone through the right process before allowing DSS to supply and fit most of the shutters.

"The contract is between shopkeepers and DSS," confirmed Saghir. "Responsibility for obtaining two quotes for repairs to fencing, lighting, wiring, CCTV installation and security shutters up to the value of £5,000 rested with each business. DSS came

recommended by the Police and gave me a presentation. I suggested they promote their services to the community, that's why they got so many quotes. No one supplier was recommended above others, First Choice Shutters and other companies also did various work."

**"Businesses' quotes were presented to a panel, comprising of a member of the Police, a New Deal Community Rep and a theme manager. They made the final decision." – Saghir Ahmed**

I enquired if Saghir was aware, as many business owners weren't, of the charges. "In the original quotes there was no mention of the charges you're talking about, but each business was asked to confirm they were happy with the work before invoices were paid."

My concerns are not only about the tendering process and the way this contractual agreement was reached, but also the lack of insight into the full costs. Although still under warranty many proprietors are now worried their modern electric shutters may become just as expensive to maintain as they were to install.

by Rob Smith

# Free computer advice and repairs

## "Got a problem with your PC? You've come to the right place."

These words greet every visitor to the completely free computer service – Computer Café – in the basement of the Ashram New Roots shop on the corner of Spital Hill and Hallcar Street. It's open from 12–3 on Saturdays and staffed entirely by local volunteers, most of whom have a weekday job in IT or are studying to get one.

We kept on meeting people with computers that they weren't using because they were 'broken'. What most people didn't realise is that by cleaning up the software and occasionally replacing a chip or two these computers can often be brought back to life.

The Computer Café has screens, keyboards, mice and cables so you can just bring your computer box along – but do remember to bring your discs/product keys if they might be needed.



keep up with the sheer number of computer problems. "We try to help everyone who comes in – although sometimes we can't finish everything in one visit and people might need to come back again" explained Gareth Coleman, a regular volunteer.

"Recently there's been an epidemic of spyware and other internet problems – and it takes a while to clean them off a computer. Afterwards we usually install free anti-virus and firewall programs to protect them – and we explain how to prevent it happening again." The Messenger website has details about this problem and how to protect your computer – visit [www.burngreavemessenger.org.uk](http://www.burngreavemessenger.org.uk) and click on the 'Surfing Safety Net' link.

The Computer Café is keen to recruit more volunteers – and you don't have to be an expert so long as you enjoy teaching others what you have learnt. "It's a great place to be because of the variety of problems we get – I enjoy a challenge!" says Gareth.

Phone 272 8008 or email [cafe@burngreave.net](mailto:cafe@burngreave.net) for more info.

by The Computer Café volunteers

BURNGREAVE MESSENGER

# Healthy eating through Arabic cookery



The course has now been extended to July this year. Course tutor, Laila Wragg, explained how retaining the same students for a 30-week course would give them detailed knowledge and enable them to pass on what they have learned. Laila, who originates from Palestine and has lived in Burngreave since 1987, told the *Messenger*:

*“It is a practical course, the students have learned how to take an individual ingredient, like rice, and create many dishes. We have also looked at how to modify recipes to make them healthier – healthy eating has been an important part of the course.”*

To find out more contact Helen Platt at the Furnival on 272 7497.

by Carl Rose



## Maklba - Rula Jordanian Dish

### Ingredients

2 cups of rice • 1 cauliflower  
2 potatoes • 1 chicken  
1 tablespoon of vegetable oil  
handful mixed spices/salt

### Method

Wash the rice and chicken.  
Boil the chicken till tender.  
Fry cauliflower and potatoes.  
Put cauliflower, potatoes, rice,  
chicken, spices and salt together.  
Simmer for 20 minutes.  
Serve with salad/yoghurt.

**Local women celebrated ten weeks of learning authentic Arabic cooking at the Furnival this December, with a middle-eastern feast prepared by the students.**

Dozens of delicious looking halal meat and vegetarian dishes were spread on tables the length of the room. Everyone was then invited to tuck in and try samples of a huge variety of dishes, such as *fhalafil*, stuffed chicken, *tabula*, meatballs and hummus, to name a few.

# Burngreave's World Forest!

**Olive, eucalyptus, Kashmir rowan, dove, almond and tulip trees are now growing in Burngreave - trees from every continent of the world thanks to a unique event held in Abbeyfield Park on Saturday 27th November.**

Over 60 enthusiastic participants from the local and wider community planted twenty-three large specimen trees in the park.

Children from all our primary schools worked with local storyteller Shonaleigh and illustrator Graham Higgins to produce a collection of illustrated tree stories.



*“It's great to see more trees being planted in Abbeyfield Park, especially from ‘around the world’ that reflect the multicultural nature of the area.”*

to help offset carbon emissions from their plane travel to an exhibition in Australia. A Baha'i faith group planted a tulip tree – a personal favourite of Richard St Barbe Baker, who in 1922 founded the International Tree Foundation.

**“This is a wonderful project – not just for the present community, but for generations to come.”**

The event was the culmination of two years work by the Burngreave Community Forestry Project, which has already involved around 900 people in planting over 7,000 new trees in the New Deal area. Through work with the Friends of Abbeyfield Park, an

additional grant of over £18,000 was awarded by Local Heritage.

The trees will be a lasting tribute to the diverse community of Burngreave that will last for decades, perhaps hundreds of years to come. Thanks to everyone who helped to make the event a wonderful success. The highlighted quotes and caption are comments recorded in the visitor's book on the day.

**“The energy created by this project gives life and love to the whole area. We are all one people, like the different leaves of one tree. May the roots of co-operation grow deep.”**

The Lord Mayor and Lady Mayoress helped to plant an olive tree, an international symbol of peace, unity and prosperity. The International Women's Artists Association planted trees

by Simon Hill

# The man with three names



**Last summer I was talking with Gaynor Naylor, one of the Burngreave Community Wardens, and she told me about her dad, Albert Naylor, a local lad well known for his pranks and mischievous escapades and later as an adult with a great sense of humour.**

## ‘Good Boy Naylor’

Born in 1932 into a family living on Verdon Street, Albert acquired a reputation as a bit of a rogue and the nickname “Good Boy Naylor”: “He weren’t bloody good!” was what people used to say! Some of his favourite tricks were described by Gaynor’s sister, Ronamy: “My dad looked forward to wash days on Verdon Street as that was the day he could visit the cinema.

You see, in those days the women used to wear bloomers with a secret pocket inside. They would put a penny in it so that it wouldn’t blow away on the washing line. My dad cottoned on to this and would replace the penny with a stone! Then he and his pals would go and watch cowboy films, but he always made sure he had enough left to buy a packet of fags. All this at the tender age of ten!”

“He also told me of a shop where the owner thought my dad was the most trustworthy child on Verdon Street. Dad used to get one of his gang to knock something off the shelves in the shop. He would then go in and offer to tidy up the mess. Whilst getting the brush from the back of the shop, he’d help himself to cigarettes and sweets.”



**Burngreave Voices: Our Stories Celebrated is a Sheffield Galleries and Museums Trust project in partnership with Sheffield Libraries and Information Service, WEA and Sheffield College.**

## ‘Albert the Hat’

Even as an adult it seems he still had a wonderful sense of humour: “He always made us laugh when we were children and encouraged us to do daredevil things,” Gaynor said. His second nickname was “Albert the Hat” because he always wore a hat, telling tales of how he had lost all his hair in a parachute jump. He lived all his life in Burngreave, saying he was born and bred here and would never leave. Gaynor has continued that family tradition by raising her own family in the area. She told me “I like it here. It’s more friendly than anywhere else – it doesn’t matter what colour or creed – everyone speaks to you”. And she should know – as a warden she spends a lot of time on patrol.

Thanks to Gaynor Naylor and Ronamy Lomis for sharing the stories of their father’s mischief. If you have a story about a local person, place or event, contact Burngreave Voices on 276 1900 or call into Burngreave Library.

**by Nikky Wilson**

# Well... what have we here?

**As workmen from Bereavement Services were erecting the new sign for Burngreave Cemetery last week, one stumbled as the earth beneath him gave way.**

He had unwittingly discovered the entrance to an old well, predating the cemetery. As the cemetery was being constructed at the beginning of the 19th Century, the well was capped with a large slab of sandstone, and then topsoil was spread over it. This arrangement has worked for the past 150 years or so, but in January the weathered slab gave way. It’s very lucky that no one has been seriously injured or even killed! The drop is about 30 feet and it is said to contain water about six feet deep. Samples of the brickwork were taken away for dating, and it was indeed confirmed that



the well is an ancient structure, used by the local community long before the cemetery was ever thought of.

Rather than fill in the well, which might be considered an act of vandalism considering its historical importance, the Friends of Burngreave Cemetery and Chapel and I are attempting to persuade the Council to cap the existing structure with contemporary bricks and a strong narrow-gauge metal mesh so visitors to the cemetery can look down it.

If the preservation of Burngreave Cemetery has something to do with its historical importance, then the well has got to stay!

**by John Errington, Cemetery Warden**



## Under 8s remain unbeaten

**Burngreave Saints Under 8s have won all their matches this season, and with the last match to play in mid-March, its looking good for them to be the top under 8s team in Sheffield.**

Supporting parent, Stephen Colgraeve, reports from the latest match (each fixture is played as two games of five-a-side).

### Burngreave Saints vs Charnock Ridgeway

The first game started with Charnock playing well and taking a 1-0 lead. However a great performance by Danny Ramsey, who hit the post and brought several good saves from the Charnock goalkeeper, brought us back into the game and an equalizer by Lyndon Edwards and two goals by George Scott gave us a 3-1 win.

In the second game good work in midfield kept Charnock more in their own half and four goals by Callum Wood, three from Marcus Edwards and one by Aaron Thorpe gave Burngreave an 11-1 win on aggregate.



© Rubin Rose-Key

Burngreave Saints are sponsored by AKTARA, Burnbank TARA and Glenmill Carpets. They are also supported by Burngreave Sports Network, who can be contacted on 241 9100.

## Sports Project Winter warmers

Stay warm this winter with some exercise. There are activities in Burngreave to cater for everyone, here is our current list of sessions.

### Mondays

2.00-2.30 Muslim Mums. Abbeyfield Park House  
6.00-7.00 Cricket coaching 13+ years. Fir Vale Sports centre  
7.30-8.15 Indoor football (12-17 years). Fir Vale Sports centre

### Tuesdays

1.30-2.30 Women's Aerobics. Earl Marshall Youth centre  
1.30-2.30 Health Walk. Meet at Pitsmoor Surgery  
2.30-3.30 Tai Chi. Osgathorpe Park  
4.00-6.00 Junior Club (8-14 years). Verdon Rec  
6.30-7.30 Arabic Dance. Women only. Firs Hill parents room

### Wednesdays

5.00-6.00 Stretch and tone. Women only. Pye Bank School  
6.15-7.15 Chairobics. Women only. Firs Hill parents room  
6.00-7.00 Cricket coaching (under 13s). Fir Vale Sports centre

### Thursdays

9.45-10.45 Women only gym session. Cornerstones gym  
11.00-12.00 Men only gym session. Cornerstones gym  
2.30-3.30 Yoga/activities for over 50s women. Verdon Rec  
3.30-5.30 Thursday Club (5-12 years). Verdon Rec  
6.30-7.30 Yoga. Christchurch

### Fridays

9.00-10.00 Yoga. Firs Hill parents room  
4.30-5.30 Martial Arts (8-14 years). Adventure Playground  
6.00-7.00 Tae Kwondo. Women only. Fir Vale Sports centre

### Saturdays

9.30-11.30 Basketball coaching. Separate boys and girls sessions (9-13 years). Fir Vale Sports centre

### Sundays

4.00-6.00 Girls youth club and basketball training (14+ years). Verdon Rec

For more information contact the Burngreave Sports Project - Rebecca (0790 993 6244) or Ben (0781 068 5523).

## Sheffield and District Junior Sunday League

### Results and fixtures

| Date        | Under 7s                    | Under 8s             | Under 9s                      |
|-------------|-----------------------------|----------------------|-------------------------------|
| 12 December | 3-8 Hillsborough [home]     | 9-2 Brunsmeer [home] | —                             |
| 9 January   | 2-3 Beighton Magpies [away] | —                    | —                             |
| 16          | 1-4 Eckington Boys [home]—  | 11-1 Charnock [home] | 1-8 Abbey Lane Juniors [home] |
| 23          | 0-10 Laughton Boys [away]   | 6-1 Wisewood [home]  | 4-10 Brinwood United [away]   |
| 30          | Laughton Boys [home]        | —                    | Nether Green [away]           |
| 6 February  | Wickersley Youth [away]     | Throstles [away]     | Rawmarsh St Joseph's [home]   |
| 13          | Millmoor Juniors [away]     | Bramley [home]       | Dinnington Town [home]        |
| 20          | —                           | Wasps [away]         | Handsworth Boys [away]        |
| 27          | —                           | Chapelton [home]     | —                             |
| 6 March     | —                           | Chapelton [away]     | —                             |

# Pitsmoor Adventure Playground Eid Party

Saturday 5th February, 1-4pm

Everyone welcome - Parents welcome too!  
Food, music, games and Mendhi  
For children aged 5-14



Never been to the playground before?  
You don't need to join, you can just turn up and have fun!  
Open weekdays 3-8pm [not Wednesdays] and  
Saturdays 10.30am-6.00pm. Contact 203 9394.

# Three parties in one

This year's Children's Festive party took place on 18th December at the Spectrum Centre.



The day began its presentation of three parties in one venue by entertaining all those under eight and over five who arrived together to rush about with freshly made sandwiches and cakes.

The bouncy castle was the main attraction alongside the play bus parked at the side of the building. Gift bearers handed out toys and gift vouchers to a happy, but subdued, older group that attended the second party for nine to twelve year olds.

There was more music and fun before moving the whole day on to the teenagers' event. It was opened by Listen to Us who presented the Phone Numbers game before their singers took to the stage.

Hot food and soft drinks preceded Bungereave Music Project's talent competition round 2. This saw a close called split decision, with joint winners Cara aged 15 and Rochelle aged 16 receiving the £200 prize.



© Carl Rose

by Rob Smith

**The Cactus Club**  
**POP & CRISPS NIGHT**  
14-17 YEAR OLDS  
EVERY WEDNESDAY NIGHT  
STARTING FROM 16th FEB 05  
OPENING TIMES  
7.30pm-11pm  
DJ CHILLOUT WITH GUEST DJS  
PLAYING VARIOUS KIND OF MUSIC  
£2 TO GET IN  
NO HOODED JACKETS  
NO ALCOHOL ON SALE THAT NIGHT  
NO SEARCH NO ENTRY  
19-24 EARSHAM STREET, SPITAL HILL, SHEFFIELD, S4 7LS  
TEL: 0114 263 4290 WEB SITE: www.cactusclub.org.uk

# Burngreave Out Of School Club



Working families can claim back up to 70% of the costs.  
All staff are police checked and the club is registered with OFSTED.  
If you would like to take a look around the club, or have any questions please call us on 256 0989.

Play opportunities and childcare for children aged 4-13.  
Based in the middle classrooms at Firshill School.  
Term time: 3-6pm  
£6 per session.  
We pick up children from Firshill & St Catherine's schools.  
School holidays:  
8.30am-6.30pm  
£15 per session





# Burngreave's best businesses

**Business successes were recognised in January at the first ever Burngreave Business Awards.**

The four awards were part of the Burngreave Business and Enterprise Event where entrepreneurs were offered advice and information on issues such as accountancy, marketing and finance.

There were cheers and applause all round when the winners were announced and presented with their impressive, sparkling glass awards. Ellesmere Children's Centre won the Community Impact award, Time For You won the Business Start-Up award, Stress Solutions won Best Customer Service and Allequip UK won Best External Branding. Nellie's was highly commended in this category with sponsor Graham Parker adding, "She always goes that extra mile."



(l-r) Lee Furness, Time For You; Sharon Curtis, Ellesmere Children's Centre; Amanda Wells, Stress Solutions and Peter Handy, Allequip UK with their awards.

The judges also recognised the success of the nominees, The Hook, Francis Feeley Fundraising, Aura Health and Fitness, Hills Office Supplies, John Heath & Sons and Recycling Matters, awarding them with a certificate of commendation.

Talking to the winners and nominees it was clear how much the recognition meant to them. Lee Furness from Time For You said: "I'm really chuffed to have won. I feel really positive that I was interviewed by a panel of people who don't know me, and they saw something in my business and myself."

Everyone agreed the awards were a good idea and suggestions were made for next year.

Adam Taha from *The Hook* said: "Certificates are OK, but it would be better if we got something more constructive, like prize money or training for staff."

Lee Furness added: "I do think it would be good to have the awards again, perhaps next time recognising businesses not everyone knows."

by Kate Atkinson

# Martin Luther King Jr Celebration

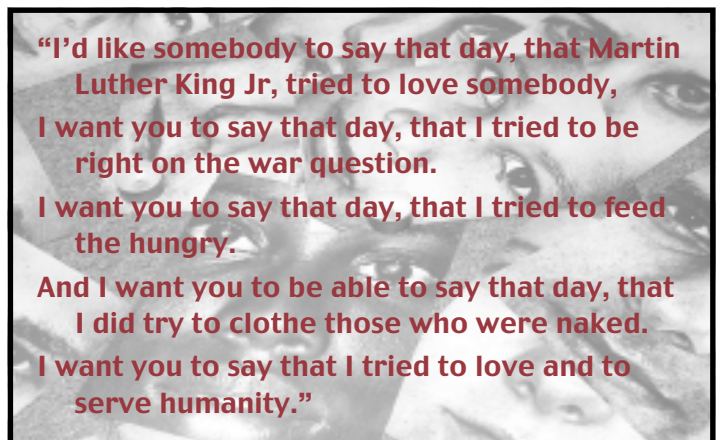
**A breadth of ages and a variety of different faces came together to celebrate the life, work and achievements of Dr Martin Luther King Junior on Monday 17th January in Pitsmoor.**



Our celebrations were organised to coincide with those celebrating in the USA – for whom it is a national holiday. We were encouraged to share our own experiences of racism and consider the effects of racial injustice. We read quotes from King's own writings, shared some food together, watched video clips and were led in singing a civil rights activist song from the 1960s.

The real beauty of the evening was that we each had our own unique insights to offer to the gathering which collectively echoed in one loud voice "They will not be judged by the colour of their skin!"

We ended the evening with some sober words from the King's last public speech before his assassination in 1968 – in the speech King expressed what he hoped would be said at his funeral.



If you are interested in helping to plan next year's Martin Luther King Celebration on 16th January, then please contact Jeff Kirby on 0775 141 2664.

by Vanessa Kirby

# Volunteering for the Messenger



© Simon Gray

**Carl Rose is a freelance photographer and designer, who has both volunteered and worked for the Messenger over the last five years.**

## *What got you involved?*

I started by designing adverts. I was getting into computers and I thought it would be good practice. From there I went on to design and layout 19 issues, I learnt a lot. I left school with no qualifications so I'm self taught and the Messenger gave me access to computers, software and advice. I dabbled a bit with web design but now I'm concentrating on photography and getting out and meeting people.

## *What are you doing currently?*

Still doing stuff for the Messenger, writing the odd bit and photographing events and stuff with Rob, but I've also been doing bits for New Deal, Creative Burngreave and Sheffield Museums Trust.

## *What future plans do you have?*

I hope to have an exhibition in a year

or so. I would like to get into lifestyle and fashion shoots; really I'm just a people person, even if I'm not into chatting I'm always into photographing people.

## *What has the volunteering for the Messenger brought you?*

Little samples of things allowed me to know what I liked and didn't like doing. I've written,

designed, photographed and talked at a public meeting – definitely something I wouldn't have done before. I was doing a media studies course but the Messenger allowed me to focus on what interested me.

## *Would you encourage someone else to volunteer?*

I've lived here since I was ten but since volunteering for the Messenger I've met loads more people. It's really nice being involved with the community. I would always encourage someone to volunteer; you don't know where it might lead!

by Gaby Spinks

## **...So would you like to volunteer?**

Volunteers are at the heart of what the Messenger is about, they decide what is in each issue and there are lots of practical tasks to be done. But it doesn't have to mean a week in, week out commitment, you can decide what you take on.

We have loads of different opportunities:

**Editorial** – come and decide what goes in each issue.

**Correspondents** – keep the Editorial team up to speed on what's happening. For example: in the arts, for young people, health or the environment.

**Reporters** – write articles, do interviews and cover events.

**Photographers** – cover events and stories.

**Proof Readers** – check each issue for errors and spelling mistakes.

**Newspaper reader** – keep the Editorial team up to date about what's being written about Burngreave.

**Web designer** – help update the website.

**Designer** – help design adverts or whole pages.

**Management** – have a say on how the Messenger is run.

If you'd like any more information please contact Gaby Spinks on 242 0564. Or come along to the first editorial meeting for the next issue, Wednesday 2nd February, 6.30pm Abbeyfield Park House.

## **Writing for Life**

**Saturday 12th February,  
10am–12 noon,  
Abbeyfield Park House**

**Free one-off course exploring writing techniques using personal histories from the local community.**

**Limited places, please contact the Messenger on 242 0564 to book.**

# Chinese New Year



**Chinese New Year marks the beginning of Spring, so is called the Spring Festival. Years are noted in 12-year cycles. People bear the qualities of the particular animal that represents the year they were born in. This is the 'rooster' year.**

The sun (*ri*) and moon (*yue*) dictate the Chinese calendar. A day (*ri*), is the time it takes the sun to travel across the sky from east to west. A month (*yue*) is the time it takes for the moon to change from new to full and back again.

Come to Burngreave Library 10.30–11.30am, 9th February, to find out more about the Year of the Rooster, the year you were born in and Chinese customs. Sample some Chinese teas, along with fun challenges with prizes and Xiao Yan Xu will on hand to write your name in Chinese brush writing.

I look forward to seeing you to wish you – *Xin Nian Hao* (Mandarin) or *Kong Hee Fatt Choy* (Cantonese)! For more information contact me on 257 4027.

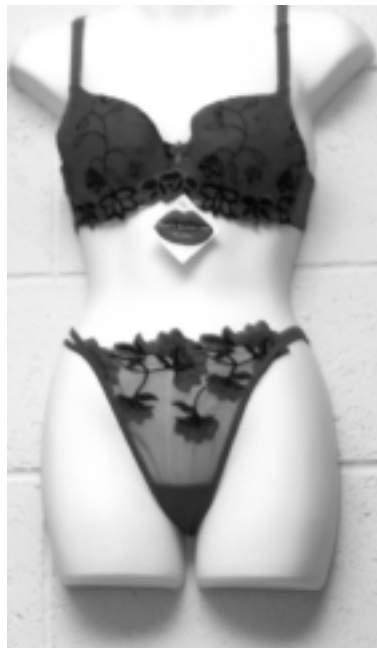
by Panni Poh Yoke Loh

**This year the Messenger is hoping to feature festivals from different cultures and religions. Please contact us if you would like to help us with this coverage.**

# Shops and business features

## Ellesmere News & Food 24-26 Ellesmere Road

Mr Hussein Abdullah took over as proprietor of Clark's newsagent less than a year ago, and he has expanded the services provided. Mr Abdullah has invested in a Pay Point facility for the purchase of essential gas and electricity credits (amidst other utility payments). Ellesmere News & Food also supply access to a cash dispenser. "This I know has become a real commodity to the people of Burngreave," explains Mr Abdullah, "Because it's so busy, I can't always keep it stocked up." Continental fruits, yam, green bananas and plantain are sold alongside many other traditional English fruits, tinned foods, sweets, newspapers and magazines. Towards the rear of the shop is the halal meat and poultry counter clearly observed by Ellesmere News & Food's full security CCTV surveillance.



## Noel's Secrets 68 Spital Hill Plaza

The seductive sensual lingerie displayed on slim waisted mannequin models are to tempt petite- and medium-size ladies. Fine smooth satin material, cotton, lace and cloth in a range of colours, red, yellow, blue, silver and white – the scented aroma of lingerie. Lara Pimental, the Spanish sales assistant, explained more about this new venture inside Spital Hill Plaza. "We sell sexy lingerie for women and shall soon be expanding into party planning, also men's exotic underwear." Providing products for all sensual occasions, Noel's Secrets reveals a full display of her range online at [www.noelssecrets.com](http://www.noelssecrets.com). "You can also order and buy online and this includes delivery," explains Noel. For any further enquires contact Miss Noel on 272 6757 or 0798 544 5090.

## The Glade Newsagent 12 Firs Hill Glade

Mr Kahn and Mr Hussain have recently reopened this essential amenity that serves the people of Firs Hill.

"Everybody is welcome to shop here," said Mr Hussain, tending the store on our arrival. "We sell daily newspapers, tobacco, soft drinks, sweets as well as small household essentials and cleaning fluids." The reopening of the Glade Newsagents is a welcome sight for the people of the Firs Hill estate. Mr Hussain explains that by April they will be licensed to sell a small range of alcohol, foods and beverages. They can be contacted on 261 8190.



by Rob Smith

All © Carl Rose

## Burngreave Community Action Forum Quarterly Forum Meeting

26 February 2005 • 11.00am  
The Welcome Centre, Nottingham Street

*Topic: 'Partnership Working'* – discussing how BCAF can: bring people together, reflect the diversity of the Burngreave community, be inclusive and work with other organisations.

For more information contact  
BCAF on 272 8008.



## The Credit Union comes to Carwood

Residents of Carwood estate are to be offered their own Credit Union collection point, where they can join up, pay in savings and take out loans.

Residents can come along to the **Hallcar Tavern, Monday 21 February at 7.30pm** to find out more about the Credit Union and how it can help them. A free buffet will be provided. Watch out for the flier coming through your door soon.

For more information about **Pitsmoor Credit Union**, see ad on page 19, or call 273 8555.



## Elections – an important



Both © Carl Rose

**It may seem like only yesterday when the last BNDfC elections took place but, now two years on, it's that time again. However, before the campaign trail hots up too much, a number of changes are being proposed to the election process and BNDfC want to hear your views and opinions.**

Burngreave New Deal for Communities has a Partnership Board responsible for agreeing the priorities for the area through consultation with local people and awarding funding to initiatives that tackle these priorities, making Burngreave a better place for people to live, work and play.

The Partnership Board has 25 places of which ten are for residents who are elected by local people as community representatives. The others comprise:

- Five representatives from local voluntary/community organisations
- Six representatives from the statutory sector
- Three representatives from the Business Community
- One local councillor representing the Area Panel

Since the last board elections, NDC has become a Registered Company and Board members now have legal and financial responsibilities as Company Directors. Also, the NDC programme has expanded – theme strategy groups have been established and community representatives have taken on responsibilities as theme champions.

In order to ensure continuity and stability on the Board, a review has been commissioned as the current arrangements mean the valuable experience gained by community representatives could be lost to the Board if all ten places were up for election at the same time.

### Here to help you

If you have a problem that is worrying you and you are not sure where to turn to next then look no further as help is at hand.

The Burngreave Advocacy Now! (BAN!) project, managed by Pitsmoor Citizens Advice Bureau and funded by BNDfC, is now up and running and is here to help you.

Norah Brown, project co-ordinator, explains: "We are here to help Burngreave residents with anything that is troubling them. This could be helping people to access services, going to meetings and appointments with them, reading and writing letters, providing language support, negotiating services, helping to fill in forms, providing information that will give them informed choices and assisting and advising on any problem that is affecting an individual.

"Instead of people not knowing where to turn or what to do next, we are providing the ideal stepping-stone to talk through any issues with people and, if needed, point them in the right direction."

If you need an advocate to assist you please contact BAN!, which is based at SADACCA on the Wicker, on 275 0262, email: [advocacynow@aol.com](mailto:advocacynow@aol.com) or pop in and see us between 10am and 3pm.

### Changing opening times

The opening times of the BNDfC Information Shop have changed. The shop at 131 Spital Hill will now be open from 10am–6pm Monday to Friday and on the last Saturday of every month from 10.30am–2.30pm.

From the end of January the shop will be displaying details of Burngreave New Deal for Communities Year 5 delivery plan – all residents are invited to come down to look at, comment on and contribute ideas to these plans.



**The Information Shop can be contacted on 292 0464.**

## year ahead

### Proposals

So that we can build on existing skills and experience but still offer opportunities for other people to be involved, the following changes are being proposed:

- **To hold the elections in the summer so there is a better chance of decent weather to hold election road shows in various locations within the area. Burngreave radio will also hit the airwaves to keep everybody informed of who is standing and when and where you can vote etc.**
- **The 2005 elections would see five community representative board members extend their service by two years so they are up for re-election in 2007.**
- **The other five members will be up for re-election this year, meaning there are five places up for election in 2005. Those elected will then be in service for four years so up for re-election in 2009.**
- **The election process will continue to take place every two years but retain 50% of the community representative members for continuity. Members will all serve for four years.**
- **No decision has yet been made as to which five of the current board members would be up for re-election in 2005 – options include voluntary redundancy, longest serving members or those with the lowest vote in the last election stepping down. These details will be finalised and the recommendations presented to the BNDfC board once your views as residents have been taken into consideration using the comments leaflet in this issue.**

### Board suggestions

Current board members have given some suggestions and comments about how we can continue to encourage residents to get involved and stay involved with BNDfC based on their experience over the last two years.


The idea of using payment to attract board members, as used by some other NDCs around the country, was examined. However, our current board members were opposed to this as they were worried that it could attract involvement for personal gain, rather than for genuine benefit to the area. It is important to attract members to our board who have a passion for improving Burngreave and participate in the themes in which they have a specific interest so that they can drive the BNDfC programme forward.

However, we recognise the time and effort our board members invest in BNDfC and we ensure they are not out of pocket by reimbursing all expenses. We also recognise the opportunities for our board members to gain skills and knowledge and, following the feedback from our existing board members, we are also going to offer more support through formalised and individual learning and development programmes.

### Get involved

So we can take your opinions and suggestions on board, please fill out the comments leaflet and drop it in at the BNDfC Information Shop at 131 Spital Hill. Alternatively, visit our website [www.bndfc.co.uk](http://www.bndfc.co.uk) or email [infoshop@bndfc.co.uk](mailto:infoshop@bndfc.co.uk).

We are looking forward to hearing from you.

**We want to hear from you...** 


Burngreave New Deal for Communities would like to know your views on the proposed changes to the election process. Please answer the following questions and drop your completed leaflet at the **BNDfC Information Shop** at 131 Spital Hill. Alternatively, visit our website [www.bndfc.co.uk](http://www.bndfc.co.uk) or email [infoshop@bndfc.co.uk](mailto:infoshop@bndfc.co.uk).

**Do you think people elected to be on the Partnership Board should be paid?** YES/NO

If so, how much?

**Do you agree with the proposal to reduce the number of community representatives up for election to five places which will result in candidates holding office for four years?** YES/NO

Have you any ideas of how to attract new candidates to stand for election?



### Safer Homes

The BNDfC Safer Homes Scheme offers target hardening to properties within the NDC area.

Door locks, window locks, spy holes and smoke alarms are some of the items on offer and all are free of charge.

If you are interested in finding out more, please contact Scott Willers on 273 5554 for more details.

### Apprentice launch

The 'Apprenticeships for All' programme, created to offer employment and training opportunities to the people of Burngreave, has now been launched.

The scheme is open to people aged 16–60 and offers a wide range of apprenticeship employment opportunities in a variety of occupations and trades. The Apprenticeships programme will include work experience or an employment opportunity and the study of an NVQ 2/3.

If you are an employer who would like to get involved or you live in Burngreave and would like more information about becoming an apprentice, please contact the freephone number 0800 138 4045.

### Theme Meetings

Everyone is welcome at the following theme meetings:

**Employment & Enterprise:** 2 February, Ellesmere Children's Centre, 1.30–3.30pm

**Health:** 7 February, St Peter's Church Hall, Lyons Street, 5.30–7.30pm

**Over-arching:** 8 February, The Furnival, Verdon Street, 6–8pm

**Education:** 9 February, St Peter's Church Hall, Lyons Street, 6–8pm

**Crime:** 15 February, Pitsmoor Methodist Church, 6–8pm

**Environment:** 24 February, Pitsmoor Methodist Church, 6–8pm

**Housing:** 10 March, BCAT meeting room, 6–8pm



contact: 276 9134

# Burngreave Area Panel

## Area Panel New Year's Honours

On Thursday 27th January, the Area Panel 'honoured' those people and organisations in our community that local people nominated because they 'make a difference' to living in Burngreave. There are three categories of Awards.

The local group/organisation that has made a major contribution to improving the lives of local people or the quality of the local environment Award was presented to **The Pakistani Community Association & Multicultural Advice Centre, The Black Women's Resource Centre and The Burngreave Messenger.**



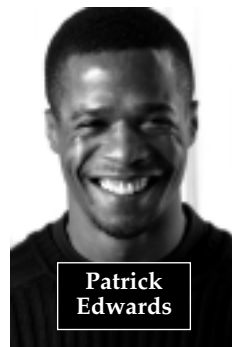
All © Carl Rose except marked

A worker in Burngreave who does 'over and above' what they are paid to do Award was presented to **Laila Wragg**, Co-ordinator for Life-long Learning; **Panni Poh Yoke Loh**, Green City Action Multicultural Events Organiser; **Sue Graville**, Headteacher at Owler Brook Primary School; **Saduf Khan**, Sure Start Parental Involvement Co-ordinator; **Kathy Everard**, Sports Development Worker and **Rashida Hassanali**, Community Education Worker.



© ID\*8

A local resident who has made an outstanding contribution to improving lives of local people Award was presented to:



### Gloria Campbell

Gloria is a regular helper at a local lunch club as well as working tirelessly in helping neighbours, friends and family.

### John Vincent

A New Deal Board Member, involved in the Business Forum, Spital Hill Traders' Group and the Adult Learners Group.

### Betty Smalley

Betty is a founder member of Green City

Action, and involved with many local organisations.

### Patrick Edwards

A founder member of Burngreave Sports Network, he has voluntarily run the Burngreave Soccer School for five years.

### Jean Wood

Jean works hard to improve the lives of the people in the Carwood area through the tenants' and residents' association.

### Jean Armstrong

Jean is a founder member of the Parkwood Landfill Action Group.

### Saleema Iman (not pictured)

Founder member of SCRAP, Recycling Matters and Green City Action.

### Fred Woodbine (not pictured)

Fred has been a governor of Pye Bank School for over 30 years and organised the older persons' lunch club.

## Classroom Assistants 15 Jobs

Are you aged between 18-64?  
Have you been unemployed for six months  
and do you live in Burngreave?  
Would you like a job working in a school?

We can offer you:

**Employment for 1 year  
In schools in Burngreave Area  
£162 weekly gross wage**

33 hours per week – which will include a package of training, on-going support and guidance.

Register your interest by  
Tuesday 8th February at  
Jobnet @ Burngreave, Spital Hill

**For further details ring Suzanne  
at Sheffield Futures on  
201 2840 or 201 2803**

centre for full employment



These jobs are supported by the European Social Fund



## Burngreave Language Support Agency

### Development Worker

37 hours per week  
Salary £16,000-18,000pa (depending on experience)  
Fixed-term contract until May 2006  
(extension subject to funding)

Burngreave Language Support Agency is seeking to appoint a Development Worker to assist local residents in accessing accredited training and becoming interpreters and translators in the Burngreave Area.

To work with community members enabling them to access relevant interpreting, translation, bi-lingual, literacy support and any other relevant language support courses.

For application pack contact:

**Kate Thompson**  
Administration & Information Manager  
Burngreave Community Action Trust  
12 Burngreave Road, Sheffield S3 9DD  
Tel: 272 8008

For informal information contact:

**Dr Mohammed Malik at BLSA on 272 2833**

Closing date:

**Friday, 11 February 2005 - 4.00 pm**

## Private Landlords and Tenants The Private Rented Project Needs You!

The Private Rented Project has been set up to improve standards in all types of private rented accommodation in Burngreave, Darnall, Firvale and Tinsley. We offer free professional support and advice to both tenants and landlords.

'Drop in sessions' every Wednesday, 2-4pm  
BNDfC Shop, 131 Spital Hill

Landlords, improve your business operations by attending the new Landlords' Information and Advice Session...

- Share knowledge, expertise and experience with other landlords.
- Access the free 'Landlords for Excellence' course at Sheffield Hallam University.
- Join a supportive partnership with the Private Rented Project Team, Anti-social Behaviour Officers, the Police and other Council services.

**Don't miss the initial meeting!**

Tuesday 8th February 2005 at 6.30pm  
Bangladeshi Neighbourhood Centre,  
Staniforth Road, Darnall.

Refreshments Available!

For more information tel: 0114 273 4642

'Private Rented Project',  
Private Sector Housing,  
3rd Floor, Howden House,  
Sheffield S1 2SH



## Security grants for local companies and voluntary groups Are you missing out?

Following the successful pilot project on Spital Hill, the security grant scheme has been extended to cover the whole of the BNDfC area.

Your group or business could qualify for a grant of up to £5,000 towards security improvements such as CCTV and alarm systems, roller shutters, fencing and door entry systems.

Businesses can get two thirds of the work funded; voluntary, community and faith groups may be eligible for 100% funding (up to a maximum of £5,000).

The grants are spread throughout the year and applications can be submitted at any time.



For an application form and  
further information please contact:  
**People United Against Crime**

**275 8688**  
[security-grants@people-united.org](mailto:security-grants@people-united.org)





Dear *Messenger*

Having finally managed to read to the end of the November issue I would like to give you my experience of the 'Burngreave Link' bus service.

I have caught the Burngreave Link twice. The first time it left exactly on time from Spital Hill and returned from Meadowhall exactly on time too and I thought Wow! Brilliant! I encouraged all my friends to try it, saying how much more reliable it was than MainLine and you could get places without having to walk miles or go into town and out again.

Then I tried to catch it again on the following Saturday with my husband. We caught it on Grimesthorpe Road and only managed to catch it because we were at the road side ten minutes early. On returning we arrived at the bus stop at Meadowhall five minutes early and sat there for 40 minutes until finally accepting that it either wasn't running or had left extremely early again.

In conclusion, I have discovered to my satisfaction that the service is only reliable 50% of the time, so I have returned to MainLine. Perhaps Burngreave Link runs empty most of the time because others in the area have tried the service and found it wanting as I have, and told their friends?

Maybe you can investigate!

Yours faithfully Ann Creasey

**We raised the concerns in this letter with South Yorkshire Passenger Transport Executive, who are part of the steering group managing the Burngreave Link project. Howard Varns, chair of the steering group and Transport Development Officer for SYPTe gave us this response:**

*Local interest in the service is very welcome and important to the project's success. I am concerned you have received this feedback from a resident and would be keen to investigate these incidents, but to do this we must have specific information on times and dates. On every occasion that we have monitored the service it has operated reliably and we have only received one other complaint about the service, when it left the Northern General early in November 2004. This has been addressed with the operator and we are not aware of any other difficulties.*

*I would like to encourage residents to comment on the operation of the B1/ B2 service and contact me directly with at the Transport Executive on 0114 221 1233. Any suggestions of unreliable operation will be followed up.*

Dear *Messenger*

I am a learning assistant with the Burngreave Community Learning Campaign. I have just read the December issue of the *Messenger* and I felt that I must write to voice my opinions about an article you wrote called 'Lessons Learnt'.

As I am one of the new learning assistants I found it very disturbing to see the photo of my colleagues and me at the top of an article which seemed more about what the campaign did wrong with the first 18 learning assistants, and not about what it is doing right now.

With our picture being at the top I fear that the Burngreave community may think the problems relate to us, and not to the initial learning assistants.

The campaign is a very useful tool for this community and the learning assistants are very dedicated and helpful people, who want nothing more than to see this campaign improve the lives of the local residents, and to be a success for years to come. Also I must point out that the education program has been improved drastically for the learning assistants, and the majority of us are very happy with this, as we all know we will gain vital qualifications to help progress our careers, and to enable us to give appropriate help and advice to the local community. I hope you will take this letter into consideration if you write any future articles about the BCLC and I personally would be happy to give you any more information if you require it.

Thank you for taking the time to read this letter.

Yours sincerely Rebecca Cram

Dear *Messenger*

I live in Australia, but for the first 20 years of my life I lived at 160 Petre Street, which was the post office at the corner of Lyons Street. Today the only reminder is the post box which stands where the post office was. Even though I have lived longer in Australia than in Sheffield I still have fond memories of the area where I grew up.

My wife and I visited the UK last year and drove around the Pitsmoor area. I have to say that because of warnings given by relatives we did not stop and walk around, although I would have loved to have walked in the wooded area that now seems to have grown up below Petre Street. This area was my play ground, Edgar Street, Thorndon Road, Earsham Street etc. Reading your paper has made us realise that at least some one is trying to make this area very pleasant.

The wood, better known to us as Smiths Field was always quite a pleasant playing area, especially on Saturday afternoons when the cricket matches were played. How that cricket club managed to have a cricket pitch on the side of a hill was quite amazing. The last time I walked on that field was in 1982 to visit my father who had a pigeon loft. By this time the slum clearance had begun and not many people used the field, so it was overgrown more than I had ever seen it before.

It was sad to see All Saints' church had gone under the hammer, I was a choir boy there for about seven years and thought it would last for generations to come. The 76th Sheffield Boy Scouts used to march from the Institute at the top of Carwood Road, with a full band playing, every fourth Sunday. After the service they would then do a lap of the block Sutherland Road, Petre Street, Lyons Street and then back up Grimesthorpe Road to the Institute.

I trust my ramblings have been informative and would be only too happy to supply any info that you may be requiring regarding the Pitsmoor area post war.

Regards Gordon Lawton



*Upset? Angry? Full of joy?  
Good news or bad,  
we want you to have your say!*

Dear Messenger,

According to last year's census, 60 percent of the population of Burngreave described themselves as British white, 0.7 percent as Irish white and 1.7 percent as 'other white'. Therefore, in total, white people make up 62.4 percent of the population of Burngreave, yet we are consistently grossly under represented in the Burngreave Messenger. In fact, although there are many articles specific to other ethnic groups, I have never known the Anglo-Saxon community ever to be mentioned. We also, incidentally, have a multicultural festival that ignores the culture of the host nation. Where are the Morris dancers, clog dancers or brass bands?

I have lived happily in Burngreave for fourteen years, but I am now beginning to feel excluded. I'm sure that I would feel more 'included' if the Messenger were to be more representative of the population in the Burngreave area.

Yours sincerely Sally A Stracey

*The population figures for Burngreave from the last census held in 2001 (figures: <http://neighbourhood.statistics.gov.uk/>):*

*White [including white Irish]: 58.5%*

*Asian or Asian British: 22.9%*

*Black or Black British: 12.2%*

*Mixed: 4.8%*

*Chinese or other Ethnic Group: 1.6%*

*However these figures are of little importance when making decisions about the content of the Messenger. The Editorial team is committed to achieving balance and we hope individuals and groups from all communities feel they can use the Messenger. We rely on local residents and groups to approach us with stories, ideas and requests for articles; the content reflects what people bring to us. This has always included stories from Burngreave's white communities.*

*It is important the whole community is included in the regeneration of our area and sometimes we all need support support to get involved.*

*If you have suggestions or ideas about what you think should be in the Messenger, please get in touch on 242 0564.*

# BURNGREAVE BUILDING Co.



**New Deal Contracts Undertaken**

33 Melrose Road, Burngreave, Sheffield S3 9DN

email: [burngreavebuilding@hotmail.com](mailto:burngreavebuilding@hotmail.com)

[www.burngreavebuilding.co.uk](http://www.burngreavebuilding.co.uk)

FREE ESTIMATES - FREEPHONE:

**0800 083 0669**

0114 275 1281

Mob: 07977 96 41 42



## Pitsmoor Credit Union

**Your Local Savings and Loans Co-operative - Join Now!**  
For more information, phone 273 8555 or come to a Collection Point

Office open for enquiries Monday-Friday 10.00am-3.00pm

Tuesdays 8.00-9.00pm

at The Rock Public House, Rock Street

Thursdays 11.00-12.00am

at the Welcome Centre (Christchurch Community Hall)

Pitsmoor Credit Union is regulated by the Financial Services Authority. Reg No: 213562

Can't use a needle and thread? Need that little sewing job done? Alterations, curtains or is that special occasion coming up? Fancy dress.

Give Val a call on: (0114) 243 1199

## SIGNPOST GARAGE

**Class 4, 5 & 7 MOTs**

Up to 16-Seater Minibuses Tested

Auto Electrics, Petrol & Diesel Engine Management  
ABS, Air Bags, Air Conditioning Service, Key Coding

General Electronic Control Module Diagnostics

Smart Diagnostics for Peak Performance

Proprietor: Javed MIRTE, MSOE, MIMI, CAE, LCGI



Tel: (0114) 272 9216  
[www.signpostgarage.co.uk](http://www.signpostgarage.co.uk)

8a Kilton Hill, Sheffield S3 9EB

## Year 3 Funding

Funding to support  
and fund arts projects  
within Burngreave through  
the Creative Burngreave  
Project Grant.

Grants available up to  
a maximum of £4,000.

The total project grant is £42,500.

The deadline for all applications  
is 29th April 2005

For more information and  
an application form, contact:  
Alka Prabhakar on 0114 221 1891  
Creative Burngreave  
Sheffield Arts Education  
Arundel Street  
Sheffield S1 2NS

creative  
burngreave

## Amanda Wells • Massage Therapist

In spite of being constantly  
trampled on, our feet are amongst  
the most sensitive parts of our  
bodies. Each has 26 bones, 7,200  
nerve endings and 107 ligaments.  
Don't yours deserve a treatment?



Nominated for the  
Burngreave Business  
Awards 2004-5

**Mobile Reflexology**  
Best foot forward

Experience a  
'Walking on air'  
feeling

- in the comfort  
of your own home

Phone: 0114 273 0976  
Mobile: 0779 110 6885  
Email: [stressolutions@aol.com](mailto:stressolutions@aol.com)

Amanda J Wells BA (Hons), ITEC, IGPP  
Qualified, Registered & Insured



@ DAKKA'S ALL NEW FULLY LICENSE

# Cactus Club

OPENING TIME 9pm-4am

MONDAYS FEB 14th '05 - VALENTINE DANCE  
CHILL OUT & GUEST DJ's  
HIP HOP & RNB NIGHT

TUESDAYS  
KC FROM EXPANSIONS  
BEST OF 70s, 80s, 90s SOUL

WEDNESDAYS  
14-17 YEAR OLD NIGHTS

THURSDAYS  
CHILL OUT & GUEST DJ's  
HIP HOP & RNB NIGHTS

FRIDAYS  
MECHANIC T & DJ GUESTS

SATURDAYS  
GARY 'O' THE ENERGY god  
PLAYING THE BEST OF RAGGA, HIP HOP & RNB

SUNDAYS  
JR  
BEST OF 70s, 80s, 90s REVIVAL

NO SEARCH NO ENTRY  
NO HATS OR HOODED JACKETS  
FREE CLOAK ROOM FACILITIES

18-24 EARSHAM STREET, SPITAL HILL, SHEFFIELD S4 7LS  
Tel: 0114 263 4090  
Web Site: www.cactusclub.org.uk

## Flowers for Valentines

from

### Simply Red

184 Barnsley Road  
Sheffield S4 7AF

Wed: 10.00-5.30  
Thu/Fri: 9.30-5.30  
Sat: 9.30-4.00  
Sun: 9.30-1.00



Tel: 0114 244 7007  
Mob: 0770 215 9400

## Greentop Community Circus Centre

### Youth Circus Workshop

Every Tuesday until 12th April


8-12 year olds: 5.30-6.45pm  
12-16 year olds: 7.15-8.30pm

This course aimed at 8-16 year olds will include juggling, clowning, manipulation, stilt-walking, acrobatics and performance.

12-16 year olds will also be taught aerial skills (trapeze etc).

At the end of the course there will be a short public performance

Cost per session:  
8-12 year olds - £1  
12-16 year olds - £2



**Greentop Community Circus Centre**  
St Thomas' Church, Holywell Road  
Brightside, Sheffield S4 8AS  
Tel: Tracey on 244 8828

# BURNGREAVE OPEN MIC

## CALLING ALL

SINGERS • RAPPERS • STORYTELLERS  
POETS • COMEDIANS • MUSICIANS ETC

- Gain performance experience
- Improve your confidence
- Take home recordings
- Facilities for backing tracks
- All standards and styles welcome

**FREE ENTRANCE**

Witness the latest talent coming out of your communities

**WHERE:** At the Furnival, Verdon Street  
Bus route: 47/48 to Rock Street

**WHEN:** 1st Mon and 3rd Tuesday of each month  
**TIME:** 6.30-8.30

**UPCOMING DATES:**

|  |         |
|--|---------|
| Mon 7 <sup>th</sup>  | Feb '05 |
| Tues 15 <sup>th</sup>  | Feb '05 |
| (with special guest speaker, local actor, Danny Poysse, appearances in Coronation Street, Casualty, The Ward and more) |         |
| Mon 7 <sup>th</sup>  | Mar '05 |
| Tues 15 <sup>th</sup>  | Mar '05 |
| Mon 4 <sup>th</sup>  | Apr '05 |
| Tues 19 <sup>th</sup>  | Apr '05 |
| Mon 9 <sup>th</sup>  | May '05 |
| Tues 17 <sup>th</sup>  | May '05 |

**MORE DATES TO FOLLOW**



**GOT Productions**  
creative burngreave

Supported by  
BNDC Grant Fund  
**SMOKE AND ALCOHOL FREE EVENT**

For further information: Vincent Turner at Creative Burngreave  
Tel: 0114 221 1892 email: v.turner@sheffielddartsed.org.uk

**HAWKINS PHARMACY**  
Your Community Pharmacy  
NHS & Private Dispensing  
Prescription Collection & Delivery  
Tel: 275 49 20 For full details  
149 BURNGREAVE ROAD

**Wicker Pharmacy**  
OPEN LATE  
every day of the year!  
55-59 The Wicker, Sheffield

**Pitsmoor Dental Health Centre**  
Dr Alan Moffatt Dr K M Ackom-Mensah  
wholistic dental care  
139 Burngreave Road, Sheffield S3 9D1  
Tel/Fax 0114 272 3076 Mob: 0831 116340