

Burngreave Messenger



Voice of the Burngreave Community

Merry Christmas and Happy New Year to all our readers

Last of the New Deal Money?

New Deal have announced the projects they have prioritised for the remaining five years of the programme - full details are on pages 8-9.

No projects will lose their current funding, but each project has been allocated a traffic light: Green indicates 'must do' projects, Amber 'funding only renewed if more money becomes available', Red 'funding not to be renewed'. New Deal will decide early next year how the remaining £5.5 million will be divided up among the 'Green' projects.

Of the 85 projects, 42 were given green lights. Red decisions were given to 62% of community managed projects and 65% of externally managed projects (such as those run by the Council).

When asked why none of New Deal's internal projects had red lights, Rose Ardron, Community Rep and Chair of the Partnership Board, said that they are all "necessary for the running of New Deal", explaining that:

"When we funded community projects, it was to build their capacity to become self sustaining because New Deal won't be there for ever. With externally managed projects, we need to make the agencies think about how they can deliver without New Deal money."

Rose explained how the decisions had been made, taking into account their top five priorities – wealth creation, governance, safety, health and environment:

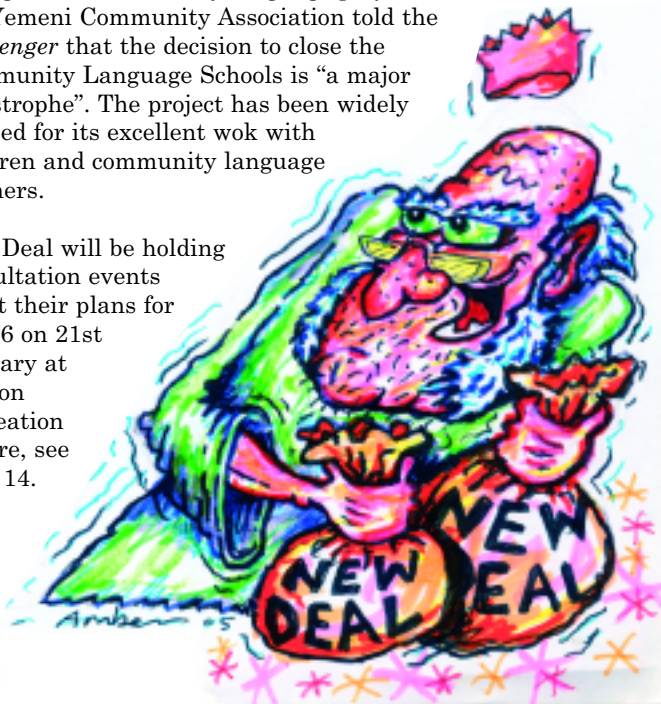
"Over a series of away days we set priorities around what New Deal want to achieve by 2011. We asked ourselves 'is this project going to help us achieve our priorities?' A project's past performance wasn't considered, nor how much money each project might ask for. We want to achieve long-term change; so projects have to be sustainable."

Of the 43 projects with a red light, 13 will have no New Deal money by April next year, leaving these projects with little or no time to find alternative funding. Seven have already ended.

New Deal insisted that childcare and young people remain a priority, yet community provision is under threat with projects such as Ellesmere Youth Project, Cellar Space, Ellesmere Children's Centre and Black Women's Resource Centre affected by red and amber lights.

Concern was also expressed about the decision to red light Burngreave's community language projects. Abdul Shaif of the Yemeni Community Association told the *Messenger* that the decision to close the Community Language Schools is "a major catastrophe". The project has been widely praised for its excellent work with children and community language teachers.

New Deal will be holding consultation events about their plans for year 6 on 21st January at Verdon Recreation Centre, see page 14.



The Burngreave Business Event & Awards 2006 – Be part of it

Have you got a business idea?
Do you want to start a business?
Do you want your business
to be more successful?

Verdon Recreation Centre
2nd February 2006, 4-8pm



Events will include...
Business support
agency exhibitions
Advice and guidance
on all business issues

Including
workshops on:
New business ideas
Training &
Development Funding
Manufacturing Excellence

For further information contact the Business Support
Team on 292 0463 or email businesssupport@bndfc.co.uk

www.bndfc.co.uk/

Firth Park Community Arts College Adult Education Classes for January 2006

Enroll on the first night, all courses are **free, ongoing** and start week commencing **9th January** unless otherwise stated.

Mondays

- 1.00–3.00pm *Helping in Schools* – 2 days/week (Mon & Tue)
10 weeks, OCN Level 2 accredited – crèche
- 6.30–8.30pm *Computers for All*
Free if on benefits – 10 weeks – Jan 16th
- 6.00–7.00pm *Keep Fit* – £1 unwaged/£2 waged
- 4.30–5.30pm *Stop Smoking* – 7 weeks

Tuesdays

- 3.00–4.00pm *Salsa* – at Hucklow Primary School
- 5.00–6.00pm *Yoga* – £1 unwaged/£2 waged
- 6.00–7.30pm *Healthy Eating & Food Safety*
10 weeks, accredited
- 6.00–7.30pm *Pottery* – £1 unwaged/£2 waged weekly
- 6.30–8.30pm *European Computer Driving License*
Free if on benefits – 10 weeks, accredited
- 6.30–8.30pm *Holiday Spanish* – Free if on benefits – 10 weeks
- 7.30–9.00pm *Badminton Club* – small charge

Wednesdays

- 4.30–6.30pm *Confidence Building for Women*
Free if on benefits, Jan 18th, 10 weeks
- 5.00–7.00pm *International Cooking* – £1 unwaged/£2 waged

For more information contact

Panni Poh Yoke Loh

Community Education Co-ordinator

Firth Park Community College,

Fircroft Avenue, Firth Park, Sheffield S5 0SD

tel: 0114 257 4027



SYBS

Roofing Specialists

Re-Roofs

Roof Repairs

Guttering

Insurance Work

Grant Work

Velux Windows

Soffits & Fascias

Leadwork

Free Estimates

Probably the lowest quote you will get!

Tel/Fax: 0114 275 4698

Mob: 0785 548 8141

SYBS Ltd

80A Clun Street, Sheffield S4 7JS

SYFAB IT PROJECT

South Yorkshire Funding Advice Bureau (SYFAB) has free training and resources available to help voluntary and community groups access funding information using IT and the internet.

We have resource packs containing information and guides to get the best out of some of the key funding IT tools and websites.

These are available for groups to use in IT rooms at:

- **SADACCA Centre**
48 Wicker, Sheffield
- **Yemeni Economic & Training Centre**
43 Attercliffe Common, Sheffield

We offer free training sessions for groups interested in developing their internet skills to find funding information. The courses will cover the basics of using the internet for those with limited experience, and a more advanced session on using the internet to find funding information.

Details of the training dates are available on the SYFAB website: <http://www.syfab.org.uk/>.

For more information contact, **Danny Antrobus**, Project Development Worker on 0114 249 4343 or email danny@syfab.org.uk.

Burngreave Grant Fund

Get involved with your community...

Does your organisation have a new or innovative idea that would benefit local residents – would a small grant allow you to develop your idea?

Organisations can apply for a grant of up to **£5,000** and individuals and groups can also benefit with grants of up to **£500**.

It could be an activity for children or young people or a trip for local residents. Perhaps you want to organise a sports activity?

Your applications will be considered as long as:

- It helps people get involved in their local community
- The people who benefit are from the Burngreave New Deal Area

Closing date for grant applications:

12pm, 19th December 2005

Subsequent deadlines:

27th January, 24th February & 31st March 2006

For an application pack:

Phone the Grants Team on 292 0462

For help filling in an application:

Phone Leroy Betts on 292 0393 or 0791 701 4312

Concern for Iraqi Kurds

Imagine this choice: being forcibly deported to your home country where you face interrogation, possibly torture, perhaps even execution. Or living on the run in a foreign country without any income or accommodation, risking arrest at any time. This is the choice facing many Iraqi Kurds in Burngreave.

During November there were at least 165 evictions of Iraqi Kurds from their homes in Sheffield, many in Burngreave and Firth Park. Acting for the Home Office and the National Asylum Support Service (NASS), Angel Housing made 100 people homeless and Refugee Care threw 65 people out into the cold. The victims were mainly Kurds who had refused to sign a recent Home Office ultimatum: agree to return voluntarily to 'safe' Iraq or "You will be required to leave your accommodation and will not be entitled to any other form of support". Some Iraqi Kurds who had, in desperation, agreed to return to Iraq voluntarily were also evicted.

Forced deportation

The Home Office continues to claim that northern Iraq is safe for Iraqi Kurds to return to. However, the Foreign Office cites suicide bombings and 'recent insurgent activity' to advise against 'all but essential' travel to northern Iraq. Neither the United Nations nor any European government agrees with the UK Home Office.

The first forced deportations – of fifteen people – to northern Iraq were on 19th November. Karwan, an Iraqi Kurd from Bolton, recently responded to a Home Office request that he attend an interview. At the 'interview' Karwan was arrested, driven to an airport, and deported. Three other detainees were arrested and beaten by Iraqi security forces on their arrival in Iraq. Since I began to write this article I have learned that another man deported on this plane killed himself within two days of his arrival in 'safe' Iraq.

Deliberate creation

Asylum seekers who are waiting to find out if they have the right to stay in the UK are not allowed to work. Many have to work illegally to survive. I was told about Jalal (not his real name) who works at a city centre takeaway, six days a week for £100.



Asylum seekers' legal status, regarding the right to work, makes them open to exploitation. Indeed it has been suggested that this unprotected workforce is a deliberate creation: "The Government, they support the businessman," Ari summed up as he gave me examples of low wages, long hours and racist employers.

To continue to receive £35 a week food vouchers and accommodation, asylum seekers must report monthly to police stations. Many have stopped doing this for fear of being detained and deported back to northern Iraq. The subsequent withdrawal of food vouchers and accommodation creates more destitution and desperation.

With evictions and the threat of forced deportations it appears that the human rights of part of our community have been suspended. The treatment of Iraqi Kurds from Burngreave concerns us all.

by **Stuart Crosthwaite**

What you can do

Support the demonstration against detention and deportation of Iraqi Kurds: Saturday 17th December, 12pm, Peace Gardens.

Donate to ASSIST, a charity supporting destitute asylum seekers: c/o Central United Reformed Church, 60 Norfolk Street S1 2JB. Charity no: 1100894. Volunteer for ASSIST. Contact volunteer@assistsheffield.org.uk.

Get involved with the Campaign Against Detention and Deportation of Iraqis (CADDI). Contact: 0791 370 1740 (English) or 0770 426 6613 (Kurdish).

Also see letter from Burngreave Councillors on page 18.

The Editorial

New Deal's traffic light decisions [pages 1, 8 & 9] are likely to make many projects unhappy, the decisions are obviously very difficult and the issues complex. It should be recognised that it is a good thing these decisions have been made, now rather than later. Projects need to understand the reality of the situation, that New Deal will end. But the main flaw in these decisions is New Deal's belief that it can make community projects sustainable simply by removing their funding. We don't have to accept New Deal's conclusions there is still time to demand they are changed if we want them to be.

New Deal has always boasted community involvement. Now is the time to be involved and say something about New Deal's direction. New Deal will be consulting the community on what projects should be funded in Year 6 of the programme. Take the opportunity to tell them what you think.

Burngreave Messenger
www.burngreavemessenger.org.uk



Our copy deadlines & publication dates for 2006 are on our website...

Messenger Info

Meetings: 6.30pm, Wednesday at Abbeyfield Park House
Editorial: 4th January
Management: 25th January
All welcome.
Copy deadline: 11th January
Burngreave Messenger Ltd
Abbeyfield Park House
Abbeyfield Road
Sheffield S4 7AT
(0114) 242 0564
messenger@burngreave.net
www.burngreavemessenger.org.uk

The Burngreave Messenger is a community newspaper, funded by New Deal, with editorial independence. We aim to increase and encourage communication in Burngreave. Each edition is put together by an editorial team who write articles not otherwise credited. This month's team: Farzana Ahmed, Annie Blindell, Clare Burnell, Naheem Hanif, Saleema Imam, Mark Lankshear, Jamie Marriott, Gaby Spinks, Lisa Swift and Paul Taylor.

All content is copyright Burngreave Messenger Ltd or its voluntary contributors, not to be reproduced without permission.

Supermarket plans approved

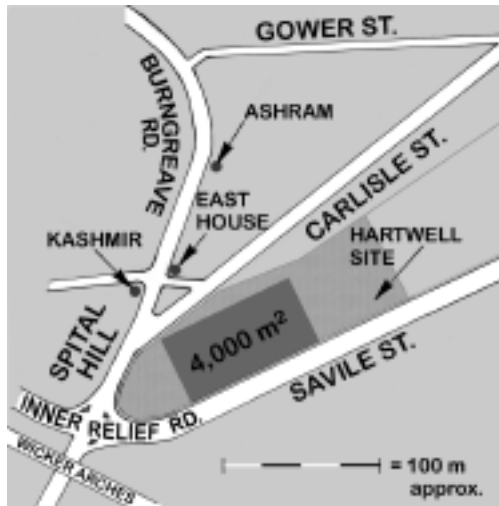
Initial approval has been given for the development of a large food retail outlet on the Hartwell Site. The plan involves building a two-storey retail outlet with the main pedestrian access being from the Carlisle Street-Spital Hill junction.

The Spital Hill Report

The Spital Hill Project Group, chaired by Cllr Drayton, was convened to consider the recommendations made for the location of a supermarket on Spital Hill. The report, commissioned by the Council in September, suggested Spital Hill could take a food retail capacity of approximately 4,000m², comparable in size to the Hillsborough Morrisons. The report considered the Ashram, the East House, Ellesmere Old People's Home and Hartwells as possible sites.

Recommendations

The report recommends the Council support the development of a larger food retail outlet on the Hartwell site. This should be on two levels with parking at the Savile Street level and the main pedestrian access to the upper retail level being from the Carlisle Street-Spital Hill junction. This development is compared to the Archer Road Sainsbury's. A further condition to the planning application would be a



contribution from the developer to improve Spital Hill.

Consensus & concern

There was overall support for this plan. This reflected relief at the ending of insecurity about demolition around Spital Hill. Some voices felt that the increased footfall from a larger retail outlet with an entrance on Carlisle Street would be good for local business. Concern was expressed about the provision of parking for access to the new shop. Other voices expressed discomfort with this plan stating that it was only through demolition and rebuilding with new, purpose-built business outlets that the commercial life of Spital Hill could be revived.

Next steps

The overall mood of the meeting was positive, a consensus was reached and a vote duly recommended the plan. The November meeting of the Area Panel endorsed the decision of the Project Group which will now go before the Council Cabinet on 25th January.

The earliest possible date for the completion of the development would be mid-2008 with 2012 as the latest date at which work would start.

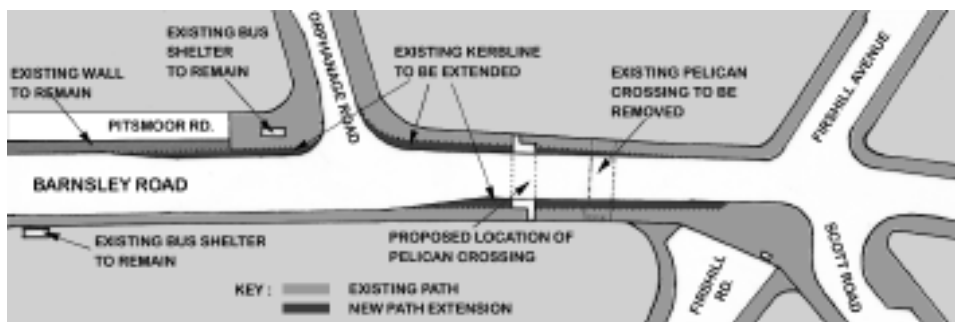
The Council have agreed to contact the business community in and around Spital Hill to confirm that no demolition is proposed for the East House or the Ashram sites. The part demolition of lower Spital Hill down from the Kashmir will still go ahead.

Caution

If, for whatever reason, the larger food store was not to be pursued, then the original planning permission for the Hartwell site would still be active, which is for six retail units and a food and drink unit. This option must have pedestrian access from Spital Hill although the actual shopping level would be at the Savile Street level. This option would not bring so many benefits to Spital Hill.

by Tim Neal

New crossing for kids



In the New Year, a road safety scheme will start on Barnsley and Orphanage Roads.

The scheme is going to narrow the carriageway along the section of road where the pelican crossing currently is – next to the school. This is to reduce the bottleneck of children who are waiting to cross and allow other pavement users to pass more freely. The pavement is to be extended at the

bus stop on the corners of Barnsley and Orphanage Roads. The pavement will be built in front of the wall – this will allow two buses to stop safely.

As part of Firshill School's travel plan, sections of Orphanage Road are to be double-yellow lined to enforce the no parking and no stopping zones outside the school gates. The school is promoting the 'Walking Bus' and 'Park and Stride' schemes.

"Too many parents are driving to school as a matter of convenience as opposed to necessity," a concerned parent said, "The double-yellow lines and a £60 parking fine will hopefully make people think a little more about whether they need to drive."

SCC Transport & Highways said that the work is to be scheduled to start early January and be finished by March. The work will be carried out seven days a week, but not during morning and evening rush-hour.

If you're interested in getting involved with Firshill School Travel Plan please contact Dina Martin on 242 0109. The schemes are being funded by New Deal and SCC Better Buses. For information about the work, contact Highways on 273 4567.

by Gaby Spinks

Join Pitsmoor Credit Union

Are you fed up with impersonal service and unexpected charges from your bank? Or find it hard to get a bank account or credit? Then why not try your local credit union?



© Carl Rose

That is what Steve did. He was fed up with being charged extortionate interest by local moneylenders and decided to take control of the situation and join Pitsmoor Credit Union.

Steve, being self-employed, had two or three weeks over Christmas when he had no money coming in. He would go to a local moneylender and borrow some money to tide him over this period. He'd then end up paying back around one and half times what he had borrowed. And before the week was out, the moneylender was back looking for the first instalment, which would come out of the money he'd just borrowed.

So Steve started saving just £10 a week with Pitsmoor Credit Union and after a few months was able to take out his first loan of £440. He is paying this back over 31 weeks at just £15 per week. This goes off his loan and another £5 goes into his savings, which means he will have more savings and can apply for a bigger loan next time he needs one. The total Steve will pay in interest for this loan is just £16.08. If he had used a moneylender he would have paid around £273.36 in interest – seventeen times more than with the credit union.

Steve said he would never go back to using moneylenders and if only he had known about Pitsmoor Credit Union years ago he would have been able to save hundreds of pounds. "I tell everyone I know to join the credit union as I can honestly say that it is the best thing that I have done. I have access to low cost credit and savings to call my own."

Pitsmoor Credit Union welcomes people regardless of their circumstances. We encourage even the smallest of savings, and when you borrow, there are no hidden charges or penalties for paying off your loan earlier. And your money is helping others in the same position as yourself.

Interested? Contact me at our office on 273 8555 – open for enquiries Monday to Friday, 10am–3pm at Christchurch, or come to one of our collection points. They take place 8–9pm on Mondays at the Hallcar Tavern, 8–9pm on Tuesdays at The Rock public house and 11am–noon on Thursdays at the Welcome Centre on Nottingham Street.

by Brendan Adams

News

Not enough school places

Last summer the *Messenger* reported on the lack of local secondary school places for children. Now we have learnt that this is affecting all the school years from Nursery upwards.

Firs Hill, Byron Wood, Pyebank and Whiteways schools and nurseries are all full, if not over subscribed. Sally Turnbull, nursery teacher at Byron Wood, thinks that there is enough overall nursery provision in the area, but it might not be at the school or centre of your choice.

There is a bigger problem at Reception level (age 5) as all schools in the area are currently full. Sally Turnbull has eleven children on her waiting list who should be starting in January, but who have been offered places outside Burngreave, for example at Netherthorpe and Parkwood schools.

If you have concerns over your child's school place call LEA Admissions on 273 5766.

by Gaby Spinks

Kashmir fundraiser

Around 70 people enjoyed a fundraising meal at the Burngreave Methodist Church Hall on Thursday 17th November. The meal was organised by Burngreave RESPECT and raised £420 for the Kashmir earthquake appeal.

An extremely diverse audience enjoyed a gastronomic feast supplied by Sabir Hussain from the Kashmir Curry House, and listened intently to Firmida Din, from the World Aid Foundation. Firmida is a nurse who has just returned from Kashmir after spending two weeks working in a hospital over there. Everyone was shocked as she spoke about the sheer scale of the disaster and the devastation it has caused.

A number of other fundraising schemes are planned and the long-term aim is to raise enough money to build a small school in Kashmir which would be called The Sheffield School. Sheffield people are especially asked to take part in the scheme.

For more information please get in touch with Steve 272 3136.

by Steve Williams

Fundraising spectacular

In October, Fir Vale School, Winterhill School (Rotherham), and Barnsley and Doncaster Technology Colleges took part in a fund-raising challenge. Fir Vale planned a charity fair involving poetry from Debjani Chatterjee, food and mendi from the Pakistan Muslim Centre, music from Fir Vale's music department, Green City Action, silent auctions and lots of other activities.

We raised £950 collectively from all our mini projects and have donated this to the Pakistan earthquake appeal. We would like to thank everyone for coming. It was all of the community that made our event successful. Thank you to everyone who came or gave money or donated items.

**by Hashim Din & Jo Edmondson
Fir Vale Fundraising Managers**

Time for another?

Pubs in Burngreave are staying open later, after new government legislation was introduced UK-wide on 24th November.



None of the pubs will be extending their opening times for more than a couple of hours beyond 11pm, however: "At the end of the day, I want to go to bed!" said Bay Horse landlady Carolyn Little.

The Government have decided to get rid of the old opening times in an attempt to curb binge drinking in the UK. According to the British Crime Survey, 47 percent of all crime is alcohol related and drink-related attendances at casualty are vastly higher between 8pm and 6am at weekends.



Government ministers say that relaxing the licensing laws will make people drink more sensibly as they won't be rushing to finish their drinks before last orders. Critics say it will have the opposite effect: that extending

the time people can drink will simply allow them to drink more.

The idea is borrowed from countries in Europe, such as Germany, that take a more relaxed approach to drinking: "I've seen 24-hour drinking in Germany, when I was in the forces. It did work out there, but took a long time to implement," said Tollgate landlord Kev Doughty.



The general consensus between publicans, staff, customers, a local councillor and the police, however, is that the new opening hours will have little effect. "It won't alter drinking habits here at all," said

Sportsman barman Richard Bennett.

Everyone is expecting the usual revelry in the run-up to Christmas, but most



say that the biggest consideration for drinkers is how much money they have or haven't got.

"The important thing to remember is that the Government are not giving away

any extra money for the public to spend on drink," said Chris Brown, South Yorkshire Police Sergeant (HQ Liquor Licensing).

"After the festive season, when we're all skint, we'll revert back to our former drinking habits. What may change is the time people go out and return home."



Customers are generally happy with the more relaxed opening times, especially those working shifts who can now go for a drink afterwards. Staff are also content with the new arrangement,

which is only a slight change for them.

However, there was a mixed reaction from residents living close to the pubs. One complaint was made by a local resident about the potential for an increase in noise and the volume of traffic.



"Only two customers drive to these premises: one brings an elderly couple who couldn't get here if they didn't drive, and the other comes in a car because she's disabled," said Bay Horse

landlady Carolyn Little.

Pitsmoor Road resident Ray Tredoux said: "I don't think it will make any difference. This is a busy road, so it's noisy anyway."

But a Shirecliffe Lane resident disagreed: "When people are inebriated they don't understand what they are

doing. I think there will be a rise in noise."

"I always hear them. The new licensing hours are not significantly different but they will have an effect," said a resident of Barnsley Road.

Reassurance for residents came from Burngreave Councillor Steve Jones, who said: "This is not just about controls being taken off; we do have new powers to control anti-social behaviour."

by Jennifer McKiernan

Pub opening hours

Bay Horse Inn

Mon-Thu: 11am-12 midnight
Fri & Sat: 11am-1am
Sun: 11am-11pm

Corner Pin

Mon-Thu: 11.30am-8.00pm
Fri & Sat: 11.30am-11.00pm

Gower Arms

Sun-Thu: 11am-11pm
Fri & Sat: 11am-1am

Grapes Inn

Sun-Thu: 11am-12 midnight
Fri-Sat: 11am-1am

Hallcar Tavern

Everyday: 11am-12 midnight

Pitsmoor Inn

Sun-Thu: 11am-12 midnight
Fri & Sat: 11am-1am

Rock House

Sun-Thu: 11am-12 midnight
Fri & Sat: 11am-1am

Royal Oak

Mon-Thu: 11am-12 midnight
Fri & Sat: 11am-1.30am
Sun: 11am-11.30pm

Sportsman Pub

Mon-Thu: 11am-12 midnight
Fri-Sun: 11am-1am

Staffordshire Arms

Every day: 11.30am-11.00pm

Tollgate Inn

Mon-Thu: 11am-12 midnight
Fri-Sun: 11am-1am

Supporting local businesses

Blue Mountain Café

Spital Hill Plaza

Open: Mon–Fri 8am–6pm, Sat: 10am–6pm

Blue Mountain is a new café that has opened at the recently-developed Spital Hill Plaza and specialises in freshly-ground coffee espresso blends including cappuccinos, lattes and mocha.



“We also sell speciality teas, hot chocolate, a selection of cakes, hot and cold sandwiches and paninis,” explained owner Steve ‘Mongoose’ Naylor.

With a background in IT consultancy and property development, Steve is also a DJ and music producer who has pioneered the hip hop, RnB and drum & bass scene in Sheffield since 1984 and has travelled all over the UK and Ireland.

Steve’s inspiration to open a café came as he was travelling through Burngreave. He said: “I was driving through Spital Hill on a gorgeous day and the sun was shining on the Plaza building. That instantly gave me an idea and after extensive research I decided to open a café that would welcome everybody in our diverse community.

“There are a lot of good food outlets in Spital Hill and the area is known for that throughout the city, but there were no open access cafés in this locality.”

The Spital Hill Plaza is a new development on the site of a former supermarket which remained derelict until its recent renovation.

In the summer, the café plans to have outdoor seating and Steve hopes this will create a ‘continental-style’ atmosphere right here in Spital Hill.

Steve is now looking forward to serving all sections of the community from his new café. He has close links with the local community and has many friends from Burngreave.

by Naheem Hanif

UnLtd*

Got an idea that will make a difference in the community but don’t know how to take it further?

UnLtd is a charity which supports people who have the ideas and the commitment to make a real difference in their communities.

“We provide advice, training, cash awards and other types of support that individuals may need to develop and run their project.

“The awards are aimed at individuals or informal groups of people who want to set up new projects in their spare time,” explained Local Development Manager, Saghir Ahmed.

The Awards are designed for entrepreneurs who want to ‘kick start’ their own enterprise. Help is given towards the running costs of the project and this includes marketing and promotional costs, venue expenses, insurance costs, refurbishment expenses and equipment costs. Business planning support is also given and where appropriate UnLtd can advise of funding sources.

To apply, you must be over the age of 16, living in the UK and applying as an individual or an informal group. You could apply for up to **£5,000**, if you have an idea for a project which will benefit your community. You must show that there is a need for the project and demonstrate that you will learn new skills from carrying out the Project.

Projects are not eligible for an award if they:

- Are part of your paid employment
- Are a formal group – this is a group that has previously developed a set of rules and has been working in the past.
- Involve employing people other than yourself to carry out most of the project work
- Are mainly to fund living expenses

For more details please contact your local Development Manager, **Saghir Ahmed** on **0114 292 0463** or email saghirahmed@unltd.org.uk.

UnLtd are working in partnership with Burngreave New Deal for Communities to help people in Burngreave.

Case Study

Name: **Jo Goodison**
Project: **Women in to tools**
Location: **Buckenham Street, Burngreave**

The project offers a tool loan service to qualified women in non-traditional trades. This enables women to work in jobs such as plumbing, plastering and tiling without having to buy expensive tools.

The Award helped Jo buy the tools.

Her advice to other budding entrepreneurs: “If you’ve got an idea and the drive and passion to take it forward, UnLtd will work with you to make your dream a reality.”

Cliff Southcombe has used his UnLtd award to introduce wireless-based broadband to Robin Hoods Bay, near Whitby. Cliff used his award to pay for equipment and volunteer training.

Michael Harding used his UnLtd award to buy music equipment for the Ryedale Rock School.



Green-lighted New Deal projects

New Deal is now in its fifth year of a ten-year programme to spend £52 million regenerating Burngreave. After committing large sums of money to projects such as the Sorby House and Vestry Hall refurbishments (due to start in a few months time) it became apparent that New Deal faced some difficult decisions, as there would not be enough money to continue all the projects.

Listed on these pages are the decisions they have made: Green indicates 'must do' projects, Amber 'only funded if more money becomes available', Red 'will not be funded from New Deal money'.

The dates listed with each project refer to when their current funding runs out. Some red lighted projects will continue for several years with New Deal funding.

The decisions were not based on the performance of projects. Where a project has ended due to poor performance it is marked 'closed'.

The projects marked 'community' are managed by Burngreave organisations, 'external' projects are managed by non-Burngreave-based organisations, such as the Council, and 'New Deal' projects are managed internally by New Deal.

community

BCAT Organisational Development	OA • Mar 06
A project to develop local community organisations currently run by Burngreave Community Action Trust.	
Burngreave Advocacy Now	HE • Mar 07
Free culturally-appropriate community advocacy, eg help with appointments etc.	
Burngreave Community Learning Campaign 2	ED • Jul 08
Local learning assistants help residents access learning, while undertaking training themselves.	
Burngreave Community Radio	OA • not started
A radio service to be run by and for Burngreave residents.	
Burngreave Messenger	OA • Nov 06
Contribution to the costs of producing the Messenger.	
Community Study Support Consortium	ED • Jul 08
After-school study support for children from the Yemeni, Somali and Pakistani communities now brought under one umbrella and managed by the Yemeni Educational Relief Organisation (previously Burngreave After School Study Support, IT Community Schools & Study Support, Reach High 2, and Somali Education Breakthrough).	
Greenfingers	HE • Sep 06
A horticultural project for people with mental health difficulties.	
Pitsmoor CAB Home Visiting Project	HE • Dec 06
Provides advice to people who are isolated in their homes due to disability, old age or caring responsibilities.	
Supporting Advice Provision	OA • Mar 07
Providing targeted advice provision to a range of communities in the New Deal area.	
Supporting Play Phase 2	OA • Mar 06
Funding extended for a limited period to the Out of School Network to run local Out of School clubs and holiday playcare.	

external

Advancing Together – Education	ED • Jul 07
A number of different LEA projects in local schools providing bilingual teaching assistants for reception upwards, breakfast and after school clubs, study support and language learning. It includes 'Celebrating Success', an annual award ceremony for pupils who have achieved success at school or made an outstanding contribution to the local community and 'Raising Achievement, Reducing Exclusion' (funded to July 06) – a programme that identifies and targets pupils who can benefit from extra support at critical points in their schooling.	
Anti-social Behaviour Team	CR • Mar 06
Deals with all complaints about anti-social behaviour using mediation or legal action if necessary.	
Apprenticeships For All	EM • Sep 07
Offers local residents access to work-based training and employment opportunities city wide.	
Burngreave Sports Project	ED • Jul 07
Delivers a variety of sports sessions and weekly activity sessions	
Burngreave Streetwork Project	OA • Mar 10
New Sheffield Futures project to co-ordinate youth services in Burngreave in consultation with youth and voluntary groups.	
Community Education Co-ordinators	ED • Jul 07
Work in schools to engage parents in adult education, and help them support their children's learning	
Green Environment Tendering	EN • not started
Continuing the work on green spaces previously done through the Burngreave Green Environment Programme.	

external

Neighbourhood Wardens	CR • Oct 06
Patrol the area looking after the interests of local residents and taking practical action.	
New Deal Police Team	CR • Mar 06
A dedicated Burngreave police team which focuses on community policing.	
Pitsmoor Adventure Playground	EN • not started
Project to build a new indoor play facility.	
Public Realm/Transport Strategy	EN • Mar 10
Improvements to the footpaths at Ellesmere Green and Caborn Corner and remodeling of the main access routes to make them safer.	
Sheffield ILM Scheme	EN • Mar 08
Provides opportunities for unemployed Burngreave residents to train and work as classroom assistants.	

New Deal

BNDfC Communications Co-ordinator	OA • Mar 06
Pays for dedicated Communications Officer to get Burngreave New Deal's message across to the community.	
Burngreave Small Grants Fund (2)	OA • Mar 10
Grants of up to £5,000 to individuals and groups for local community activities and events.	
Communications Vehicle Revenue	OA • Mar 11
Covers costs of upkeep, storage etc of BNDfC communications vehicle including its use by local groups.	
Community Engagement Team	OA • Mar 06
Encourages, engages with and supports residents to become involved with BNDfC projects.	
Community Reps (2)	OA • Mar 11
Pays the out of pocket expenses for volunteer Partnership Board members.	
LEDS (Raising Skills)	EM • ongoing
Creation of a local economic development strategy and the development and maintenance of a commissioning framework.	
Local Evaluation	OA • Mar 11
New post managing the evaluation of the New Deal programme and all its projects, internal and external.	
New Deal Information Shop	OA • Mar 06
Pays for BNDfC events and services provided through the BNDfC Information Shop.	
One Stop Shop	EM • May 08
Taking over management of Jobnet/Joblink services from April 06. Will also administer training grants and have more staff.	
Partnership Development	OA • Mar 11
Pays roomhire for BNDfC Board meetings; Theme Group meetings and training events.	
Partnership Support	OA • Mar 11
Enables local and statutory partners to get involved in the New Deal process through theme groups etc.	
Sorby House	EN • Mar 07
To refurbish Sorby House to provide a community resource centre for commercial and community activities.	
Sorby House Rev Costs	EN • Aug 07
Agency fees, service costs until building work is completed and the property is generating income.	
Supporting Business	EM • May 08
Funds post of manager to advise and support to new and existing businesses in the BNDfC area.	
Vestry Hall	EN • Feb 08
Refurbishment of Vestry Hall into a community learning centre.	

Red- and amber-lighted New Deal projects

community

- Access to Employment (YRO)** EM • Sep 06
Project offering skillbuilding to refugees and asylum seekers through voluntary work. (Yemeni Refugee Organisation)
- Burngreave Domestic Abuse Project** CR • Mar 06
A community-based support project for residents experiencing any form of domestic abuse.
- Burngreave Language Support Agency** EM • Mar 06
A social enterprise helping local residents to become multilingual interpreters and translators.
- Burngreave Sports Network** ED • May 07
Pays for two workers to plan and deliver sports activities and events in Burngreave.
- Cellar Space** ED • Mar 06
Project working with young people (11-16) in danger of exclusion from school or who have become excluded.
- Community Language Schools** ED • Mar 06
Project supporting children from the Arabic, Urdu and Somali speaking communities to learn these languages.
- Ellesmere Children's Centre** EN • Mar 07
Project to create an outdoor facility for the Ellesmere Children's Centre
- Ellesmere Youth Project** OA • Mar 07
Detached Youth Work project working in the Ellesmere and Carwood area.
- Halal Lunch Club** HE • Aug 05
Provided meals and an environment where the elderly from different BME backgrounds could meet.
- Listen to Us** OA • closed
Project to put on events for young people and refer them on to other provision in the area.
- Nett Driving School** EM • Sep 06
Provides local residents with low/no cost driving lessons to increase their ability to get and stay in work.
- Pitsmoor Credit Union (Step 2)** EM • Mar 06
Contribution to core costs to enable long-term planning.
- Pitsmoor Somali Youth Project** OA • closed
Youth project, which had funding withdrawn.
- Promoting Healthy Lifestyles for Asian Families** HE • Jun 05
Provided weekly activities for Asian families to encourage healthy eating and exercise.
- Recycling Matters** EN • Mar 05
Provided advice to residents, businesses and local schools on recycling issues.
- Training for Employment & Business** EM • Sep 05
Helped women of Somali background to learn about business and employment related issues.
- Yemeni Community Association Phase 2** OA • Mar 06
Contribution to core costs to enable delivery of community projects in Burngreave.

external

- Burngreave Circular Bus** EN • Apr 07
Provides a bus link to Meadowhall and Catcliffe.
- Burngreave Drugs Project** HE • Jan 09
Support, education and therapies for local drug users and their families.
- Burngreave Voices** OA • Mar 07
Project to involve local people in the celebration of the oral and local history of the area.

comm

- Burngreave Bookstart** ED • Mar 06
Free book packs for young families plus courses and events.
- Multicultural Festival (4)** OA • Mar 07
Organises four Festivals each year, including the award-winning Abbeyfield Park Multicultural Festival.

external

- Advancing Together for Health** HE • not started
A programme to tackle the high rates of heart and chest disease and diabetes with extra health staff, community work and health promotion.
- Community Childcare Consortium** OA • Mar 06
Provides subsidised childcare places at Ellesmere Children's Centre and Black Women's Resource Centre, and free crèche places through Yemeni Community Association, for parents taking up training in Burngreave.

external

- Catch the Drift** ED • Mar 06
Programme to re-integrate young people into mainstream education and provide interactive training courses.
- Catherine Street Area Action (Capital)** HO • Mar 06
Major facelift and redevelopment in the Catherine street triangle incorporating Rock Street.
- Catherine Street Area Action (Revenue)** HO • Mar 06
Funded the planning and development work. From April these costs will be met by Masterplan funding.
- CCTV Spital Hill** CR • Mar 07
Five CCTV cameras in Burngreave area and the costs of maintenance, monitoring and response to 'panic buttons'.
- Childcare for Training** ED • Sep 05
Pilot project to fund students' childcare costs, when they were ineligible under LSC rules for mainstream help.
- Childcare Strategy Phase 2** OA • Mar 07
Project to develop and implement a childcare strategy for the Burngreave area to include childcare training.
- Counselling Provision in Burngreave** HE • Mar 08
Provides extra counsellors in Burngreave's GP surgeries.
- Creative Burngreave** OA • Apr-06
Offers training courses for artists and small grants for arts activities.
- Education Data Project** ED • Mar 07
Identifies and tracks the progress of children receiving support from BNDfC-funded learning initiatives.
- Emotional Support & Well Being** HE • Mar 08
Emotional well being and stress management project for BME Communities, targeting Yemeni men and Pakistani women.
- Environmental Maintenance** EN • Sep 06
Provides for an additional maintenance team for Burngreave's streets and open spaces.
- Family Support Phase 2** OA • Apr 06
Provides help to families and children in the New Deal area who are experiencing difficulties.
- Fir Vale Business and Enterprise Centre** ED • Mar 06
A contribution to capital costs of Fir Vale school's proposed new Business centre.
- Green Gym** HE • Mar 07
Encourages local residents to get exercise by maintaining community gardens and other local green areas.
- Home Owners Maintenance Scheme** HO • Dec 06
Provides an inspection and advice service on housing maintenance with small grants and free DIY classes.
- Open Access Play Development** EN • Jul 05
Development of local open access play schemes and accredited training for local residents.
- Safer Homes** CR • Mar 06
Providing free door and window locks, security lights etc and subsidised burglar alarms.
- Security Grants for Burngreave area** CR • Mar 07
Grants of up to £5,000 to increase security for local businesses and organisations
- Smartwater Property Marking Scheme** CR • Apr 07
A property marking initiative free to every Burngreave resident to deter theft.
- Spital Hill Renewal Team** EN • Aug 06
The team managing the redevelopment of Spital Hill, Sorby House and the Vestry Hall.
- St Catherine's School Learning Mentor** ED • Nov 05
Identifies and supports children at risk of exclusion and underachievement.
- Women's Health Screening** HE • Mar 06
Encourages Pakistani, Somali and Yemeni women to use cervical and breast screening services.
- Workplace Health Programme** EM • Sep 05
Provides Occupational Health advice to employers and local BME residents.

Theme key

CR: Crime
EM: Employment & Enterprise
EN: Environment
HE: Health
HO: Housing
OA: Over-arching

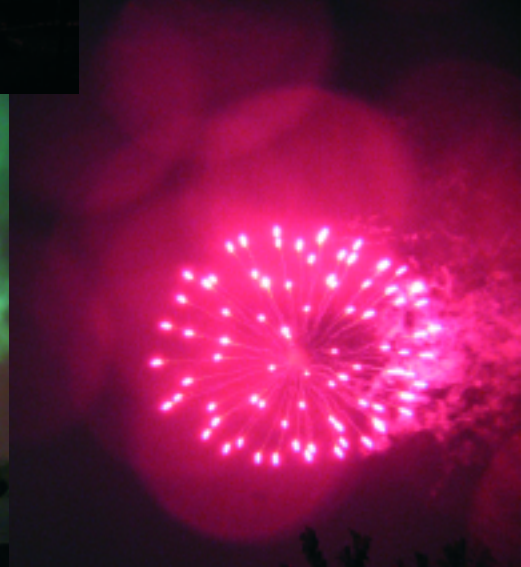
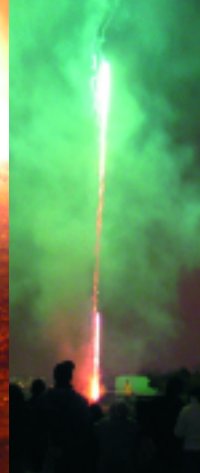
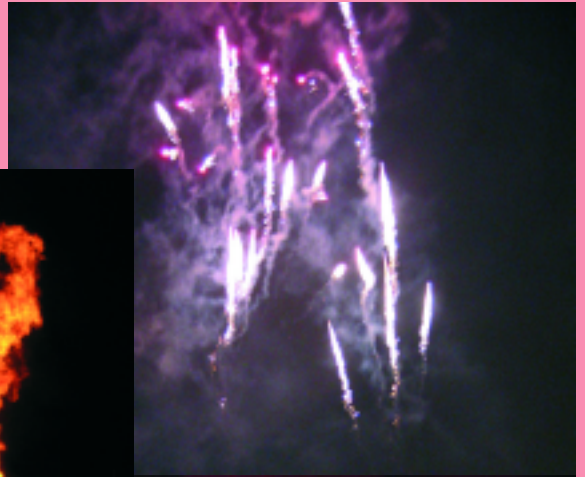
For more information about projects, see bndfc.co.uk/.

Dazzling display

The Burngreave Bonfire Night Celebration on Petre Street saw a dazzling show, glittering with colourful explosions, set against the backdrop of the Sheffield hillsides.

There were rides, music and activities through the day and hundreds braved the mist and November drizzle to enjoy the spectacular main display.

Thanks are due to the Burngreave Sports Network and the New Deal Community Engagement team, the local acts and many others for all their hard work making it bigger and better than ever.



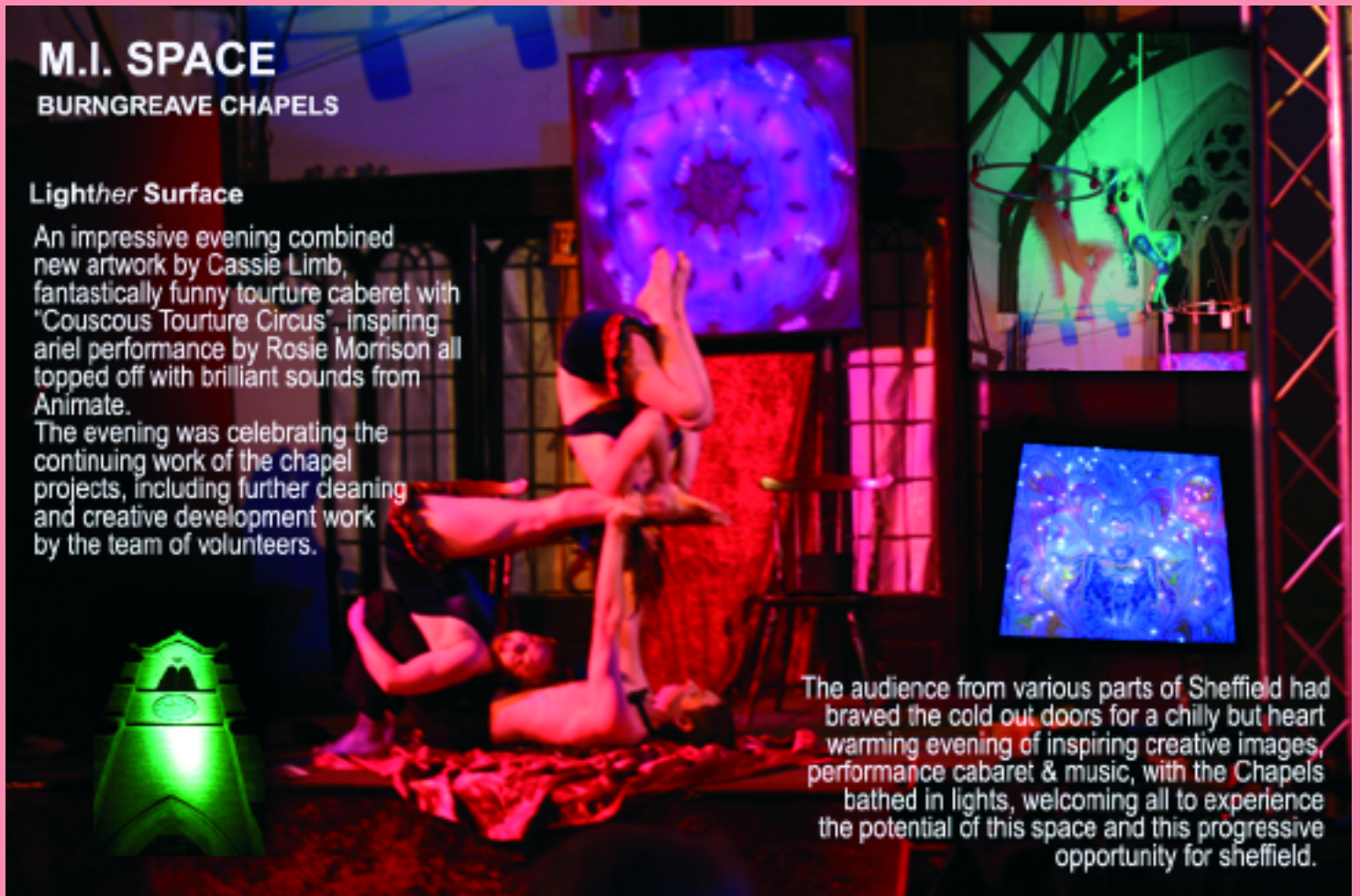
Report and pictures by
Mark Lankshear

M.I. SPACE BURNGREAVE CHAPELS

Lighther Surface

An impressive evening combined new artwork by Cassie Limb, fantastically funny torture caberet with "Couscous Torture Circus", inspiring ariel performance by Rosie Morrison all topped off with brilliant sounds from Animate.

The evening was celebrating the continuing work of the chapel projects, including further cleaning and creative development work by the team of volunteers.



The audience from various parts of Sheffield had braved the cold out doors for a chilly but heart warming evening of inspiring creative images, performance cabaret & music, with the Chapels bathed in lights, welcoming all to experience the potential of this space and this progressive opportunity for sheffield.

Crafty Christmas

Do you spend too much at Christmas? Why not save the cards and paper you receive and use them to make your own cards, decorations and even presents? They are classy, individual and appreciated by the recipient for the care that has gone into producing them.

Cut out pictures from used cards to make postcards – save time, save envelopes, save paper, save trees, save money!

Make your own envelopes – use a small opened envelope as a template. Open a large envelope, mark around the template and cut out your new envelope using the inside of the old one. White envelopes generally have coloured patterns inside already and brown envelopes can be sprayed or painted to brighten them up. Make your card to fit the envelope and close with a Christmas seal.

Punch a hole in pictures from old cards to make gift tags and use coloured wool as ties.

You can make original tree baubles from used light bulbs. Pattern them with glass paint and glitter, and make hanging loops with fuse wire.

For the Christmas table, paint small sauce jars with glass paints and fill with tea lights. And for a stunning free door decoration, prune your Virginia Creeper, twist the stems into a wreath and fasten rowan or holly berries and stems of ivy to it.

For other ideas come to the Crafty Christmas workshop at the Chapel in Burngreave Cemetery on Sunday, 11th December, 11 am–3pm.

Other planet-friendly ideas

Rent a Christmas tree for £20 from Heeley City Farm to avoid the hassle of needles and disposing of it afterwards. Reserve your tree at the garden centre and collect it from 10th December. Call 258 0482.

For presents that can change people's lives in a real way, try the following catalogues:

'Oxfam Unwrapped' has alternative gifts in Oxfam shops, on 0870 410 5030 or at www.oxfamunwrapped.com/. A goat at £20 is their best seller – over 38,000 of them have been sent so far to help alleviate poverty in one of the 70 countries Oxfam works in.

'Good gifts' has Kalashnikovs at £25 to be turned into farming tools in Sierra Leone and bicycles for midwives at £35. Call (0207) 794 8000 or go to www.goodgifts.org/.

Don't forget you can recycle your Christmas tree at any Onyx recycling centre – the nearest is on Longley Avenue West in Shirecliffe.

by Saleema Imam

Burngreave annual

FESTIVE PARTY

Tickets are Free and available from 7th December

Venue: Verdon Street Recreation Centre

Parties on Saturday 17th December 2005

First Party	Second Party
Age: 5-8 years	Age: 9-12 years
Time: 1-3pm	Time: 4-6pm

Third Party

Friday 30th December

Age: 13-19 years

Time: 7-10pm

Tickets available from Burngreave New Deal Information Shop, 131 Spittal Hill

For more information: 292 0464



All people are welcome to come and celebrate Martin Luther King Jr. Day



This year's theme

Rosa Parks

The woman who dared to challenge injustice

Challenging Racism Through

Quotes, Films, Discussions, Open mic Artistic displays.

Bring and share supper

Monday 16th January 2006

6:30pm at the Welcome Centre
Nottingham Street, Pitsmoor



Would you like to Contribute?
Contact Jeff on 07949510871

Entrance : Free

Keep on running

On Friday 4th November at SADACCA (Sheffield and District African Caribbean Community Association), three local sisters were honoured at the Black History Month achievement dinner and award ceremony.



http://bbc.co.uk/tyne/

I personally spoke to the three sisters Pauline, Kathleen and Annette Neita, who told me how active they have been, working voluntarily for many years in our community. Pauline is currently studying British Sign Language at Castle College, Annette is a lunchtime supervisor and an after-school club volunteer at Pye Bank Trinity School, and Kathleen is a support teacher at East Hackney School in London.

“We were inspired by Kathleen,” explains Pauline. “Oh yes,” says Annette, “Pauline and Kathleen ran in the 2003 Flora Light Challenge for Women, a five-kilometre run in Birmingham. I followed in their footsteps when we ran our first London marathon in 2004.” All three sisters completed the London marathon in less than seven hours. “Together we have raised more than £5,000 for the London Sports Forum for Disabled People,” explains Kathleen. “We chose this cause because one of our eldest sisters is deaf,” adds Pauline “We are very proud as sisters and enjoy all the charity runs and voluntary work that we do.”

The three Neita sisters are happy to have received the award and enjoy keeping fit while raising awareness for an important cause making a real difference to our communities.

by Rob Smith

Football appeal

Working with local Iraqi Kurds, Carwood resident Jean Wood has been fundraising to support their football team, Shirwana.

The Kurdish community have faced many difficulties in recent months and Jean is keen to make something positive happen. “The boys need football boots, because they have no money to buy these themselves. We’re trying to raise more money so the team can travel to the games.”

If you would like to help the team with a donation or fundraising contact Jean on 243 1911.

It’s about the team

The Caribbean Sports Club’s adult football team have been going for thirty years. They’ve had their ups and downs, but this season has seen an exceptional start.



They are fourth in the league with two games in hand, and only one loss in thirteen games. The team’s coach, Andy Kiwomya, told the *Messenger*:

“We are playing in a hard division, but we’re looking good for promotion. All the games are tough in Division Two and it’s a test of how consistent the team can be. We have individual players that can turn a game but it’s about the team really – from the secretary, to the manager, to the goal keeper to the scorers.”

Andy is only five seasons out of professional football himself, having played for Barnsley, Bradford City and Sheffield Wednesday. But even during his professional career he coached in Burngreave, and is pleased to see other teams developing in the area.

“It’s important kids can progress at all age ranges and eventually play for adult teams. That’s why we want the Sports Club team to play at a good, semi-professional level so the kids can have something to aim for.”



Both © Carl Rose

The team is open to anyone over the age of 18, from any section of the community:

“We really reflect the Burngreave community with players from the Yemeni, Somali and African Caribbean communities. Refugees often come and play with us.”

Andy is encouraging people to come and train on Wednesday evening at Fir Vale Sport Centre (Fir Vale School) 8.00–9.30pm. You don’t need to join the team – just turn up on the night and enjoy some football.

Under 8s



© Mark Lankshear

After a turbulent pre-season where Burngreave Saints Under 8s lost quite a few players, we basically assembled a whole new squad, only retaining half of last season's squad. After only a couple of friendlies, we went into the season not really prepared and lost the first three games.

But we improved steadily every game, before finally winning two games on the spin and playing really well. After this we came up against a couple of really quality sides and were well beaten.

So far, the coaches and myself cannot fault the players' effort, and we hope before the end of the season we can win a couple more games.

We are always on the lookout for players of any ability, either boys or girls. We train between 5 and 6pm at the Sheffield United Academy at Firshill on Wednesday evenings. If anyone is interested, they can contact me on 281 6885 or 0791 365 830, or come along on Wednesday evening.

by Rob Jolley (Manager)

Under 9s

After last season's stupendous record of twenty games unbeaten, Burngreave Saints Under 9s started the season with confidence.

Although the team lost several players to bigger teams at the end of the season, it has repeated last year's success – played: 10, won: 10. Despite one loss in their last game, they are top of their league.

This season will be crucial for the team, as they will be seeded based on their performance. The division that teams play in next year will depend on where they finish in the league this year. The top ten teams from the league will play in the Premiership.

It's looking good for Burngreave Saints to be up there with the best.

Under 10s

Local Under 10s team Earl Marshall Juniors have enjoyed an excellent start to the season. Although the sequence of seven wins and a draw against league leaders Maltby Juniors was upset with a narrow 1–0 away defeat to Whiston Wildcats, the team is through to the quarter finals of the Trophy Competition and is well placed to push for promotion in the second half of the league campaign.



This is the third season together for many of the boys, and the strong sense of team spirit that has developed is a credit to the players, parents, manager Garfield Walters and his assistants Tony and Cecil.

Earl Marshall Juniors always welcomes new unregistered players from the local community. If you are interested please contact Club Secretary Mark Moran Healy on 0777 645 7732.

by Mick Ashman



Both © Rohan Francis

Football with Burngreave Sports Network

Burngreave Sports Network (BSN) and Netherthorpe and Uppertorpe Young People's Project (NUYPP) are seeking skilful, determined and enthusiastic young footballers to be part of new under 14 and under 16 teams and represent that local talent is out there.

On Thursdays BSN and Sheffield Futures are running football sessions for all local young people aged 13–19. "We have at least 25 young people attending and they are extremely active, some play for teams and for some it's just a hobby. We are looking to develop a football team out of this session," said Ghamdan Asan'ani (BSN coach). The sessions are from 7.45pm until 8.45pm Fir Vale Sports Centre. Everybody is welcome regardless of ability.

BSN contact details are 241 9100 or 0791 740 3299 email: bsn@bcatsheffield.org.uk.

Year 6 consultation

The BNDfC Partnership Board is responsible for deciding how BNDfC money is spent to meet the priorities of the local people. Each year we produce an Annual Delivery Plan detailing the projects and activities to be funded that year.



We would like to invite you to our Year 6 consultation event to help you understand how the money is being spent and to offer you the opportunity to contribute to how this work is delivered.

We will be holding consultation events in various locations around Burngreave throughout January. You will receive a leaflet delivered to your home inviting you to these events in the New Year.

The main meeting will take place at 11am on Saturday 21 January at Verdon Recreation Centre.

If you can't make one of these events but want to contribute, you can visit the BNDfC website to download a feedback form or you can visit the Information Shop on Spital Hill.

Look out for your summary of the Year 6 Delivery Plan being delivered to your homes in the New Year. Additional copies will also be available from the BNDfC Information Shop.

News in brief

Festive fun

Calling all Young people in Burngreave...

Don't forget to attend our Festive Fun parties in December. We have got two parties on Saturday 17 December at Verdon Recreation Centre:

5–8 year olds from 1–3pm and
9–12 years olds from 4–6pm.

A third party for 13–19 years olds will take place on Friday 30 December at Verdon Recreation Centre from 7–10pm.

Please contact the BNDfC Community Engagement Team on 0773 987 8601 or 292 0393 – we look forward to seeing you there!

Thank you

A big thank you to everyone who attended the public meeting on 3 December at Verdon Recreation Centre.

Responses to questions will be printed in the January edition of the *Messenger*.

Theme meetings

To find out more about an issue that concerns you then why not come along to one of the following theme meetings? Everyone is welcome.

Health: 5 December & 9 January, St Peter's Church Hall, 5.30–7.30pm

Employment & Enterprise: 7 December, Ellesmere Children's Centre, 1.30–3.30pm

Over-arching: 13 December & 10 January, The Furnival, Verdon Street, 6–8pm

Education: 14 December & 11 January, St Peter's Church Hall, Lyons Street, 6–8pm

Environment: 15 December & 26 January, Pitsmoor Methodist Church, 6–8pm

Housing: 12 January, BCAT meeting room, 6–8pm

Crime: 17 January, Pitsmoor Methodist Church, 6–8pm

Burngreave New Deal for Communities was established in 2001 to deliver a 10 year £52m regeneration programme tackling the issues of deprivation in the area.



Employment Advisors

**Salary £17,649–21,551
Project ends June 2008**

We are looking for two individuals to work as Employment Advisors in our One Stop Shop, working with local residents to help them overcome their personal barriers to employment or training; once successful in securing employment or training to provide continued support.

To be considered you will need to have:

- Experience of employment and employability support services
- Experience of working with a diverse client mix.
- Experience of engaging and working with clients and employers
- Knowledge of key issues and barriers to employment
- An understanding of statutory agency working
- Excellent communication skills

Closing date: 4pm Monday 9 January 2006

Interview/Assessments: Wednesday 25 January 2006

If you are interested, have the relevant skills and want to know more, contact **Lizzy Clark** on **0114 292 0391** or alternatively request a recruitment pack via our email address **enquiries@bndfc.co.uk**.

A New Deal for Burngreave

Burngreave shines at national awards

A Burngreave resident who has helped numerous local parents into education is celebrating her success after receiving a special award at a glittering national awards ceremony.

The Office of the Deputy Prime Minister's (ODPM) New Deal for Communities and Neighbourhood Management Awards 2005, held in London and hosted by Baroness Andrews, Minister in the ODPM, saw Rashida Hassanali win the Personal Achievement for a Resident Award for her work with Burngreave New Deal for Communities.

A mother of three young children who all attend Firs Hill School, Rashida started her community work as a volunteer after getting involved in her children's learning. The school was struggling with little engagement from parents so Rashida helped to establish the first parent-education course.

After a year as a volunteer, Rashida started paid-work through a BNDfC funded project as a community education co-ordinator at Firs Hill and St Catherine's Primary.

Three years on from setting up the very first course as a volunteer, there are about twenty courses at both schools ranging from Islamic Textile Design to Move into Social Care.

All the courses are driven by the desire of parents and other local people to build self-confidence, gain qualifications, have the chance of getting job, support their children's education and expand their interests.

Says Rashida:

"I am really pleased to receive this award because I am aware of how much potential there is in the community here. The things holding people back are their lack of confidence, not recognising the skills they already have, and possibly childcare.

"It frustrates me to think that there's so much talent in this area – people who can sew, cook, sing, play instruments, speak numerous languages and are skilled trades people – yet this isn't given the credence that it would get in some other areas of the city.

"But we're trying to change that and increase people's confidence as well as their skills – it definitely gives me a lot of job satisfaction."



Partnership Board Meeting – Wednesday, 26 October 2005

What was discussed

Communication Strategy Update

Board Members were informed of the progress of the Communications Strategy over the past 12 months.

BNDfC Asset Update

Whether BNDfC should hold assets that bring improved services to the area or generate income.

What we decided

Members welcomed the progress made and stressed the continued need to engage local people in the decision making process.

BNDfC would invest in assets that were sustainable but brought about improved services in the area, eg Sure Start Centre that delivers children and family services, Vestry Hall which will offer learning opportunities for adults and children and Sorby House which will be a focal point for delivery of other services such as job search and the Citizens' Advice Bureau.



contact: 276 9134

Burngreave Area Panel

It's not just sports.

leadership, to act as walking guides, and in child protection procedures so that they can act as either volunteers or as sessional staff.

But it's not just sports. At Wensley estate, the Activity Sheffield worker organised a walk and picnic in the summer all round Wincobank Woods – ending up with kite making. This October, she organised 45 people to go to Twycross Zoo – all ages, no restrictions on access, parents with large and small children. And every Wednesday at Wensley Community centre, for 20p admission there's an hour of a fitness session for 'Fit Kids'. And after working there for six months, more parents and more children are getting to know each other – the beginnings of a re-birth of community life on the estate?

In the local traditional centre at Verdon Street, you'll now find trampolining on a Tuesday at 6pm for £1 (age 8–16), women's aerobics on Wednesday mornings at 10am for £1 and Somali dance classes starting on Fridays at 5pm. And twice a week on Tuesdays and Thursdays for 20p the staff run Kool Club from 4pm with arts and crafts activities or sports sessions in the main hall.

Activity Sheffield are putting together a sports directory that will include all these activities, available in March. Or look out for the green and yellow posters advertising activities near you!

If you or your organisation are putting on sports or physical activities in the area you can appear in the sports directory too. Contact Rebecca Norton, Activity Sheffield Burngreave Area Worker, on 0790 993 6244.

Two- & four-legged friends

At last month's Area Panel meeting questions were raised about rat infestation. We've also received complaints about rats being seen in some local parks – possibly connected with food left for birds. The pigeon flock at Ellesmere Green is still being fed. We've also heard that dog biscuits (possibly for squirrels or foxes) have been left on grass on Firshill estate.

The message is dead clear – don't feed pigeons unless you want to encourage rats. Pigeons won't die they'll only breed less, and the flocks will get smaller. If you want to feed birds, put food out on a raised level.

Area Panel outcomes

At last month's Panel meeting, the scheme for deciding on which streets would get priority for any future Facelift scheme was agreed. And there was a warm welcome to the proposal that any supermarket should be located on the Hartwell's site at Spital Hill – with pedestrian access off Carlisle Street/Spital Hill and the sales area on the same level. This still has to be approved by the Cabinet.

And finally...

The Panel's annual New Year's Honours will be awarded at the Town Hall on Thursday 26th at 6pm – late nominations can still be accepted by rushing them to Marilyn King at the Area Panel office by 16th December.



You may have seen the Burngreave Sport Project activities in the Messenger each issue, it's run by Activity Sheffield, part funded by the Area Panel, and its doing all sorts of physical activities in the area. So what sorts of things are happening?

At three of our local schools (St Catherine's, Firshill and Whiteways) on one day a week, from 8am sports workers are ready to organise team games of kwik cricket, football or something more informal for children before school. Up to 20 children are now getting to school really early – and it seems, they are more alert and sorted when lessons start.

Working with adults, 24 people in the area have just got qualifications in sports

Councillor's Surgery Dates

Your local councillors, Jackie Drayton, Ibrar Hussain and Steve Jones (pictured left to right below), share surgeries on a rota basis.



Councillors' surgeries are on Saturday mornings in Burngreave Library from 11.00am to 12.00 noon unless otherwise stated:

17th December 2005: Jackie Drayton
24th & 31st December: no surgeries

7th January 2006: Steve Jones
14th January: Ibrar Hussain
12.15–1.00, Firshill TARA, Ibrar Hussain
21st January: Jackie Drayton
28th January: Steve Jones

Next Area Panel Meeting

- Thursday 26th January, 6.00pm – the Burngreave Area Panel New Year's Awards at Sheffield Town Hall, Pinstone Street.

Uncle Joe: A very special person (1940–2005)

Staff, pupils and parents at St Catherine's primary school joined together to make a mosaic as part of Family Learning Week last October.

However the exercise had much more significance; it was part of the plan to create a 'Quiet Garden' in one of the school courtyards to honour Joe Butler, a much-loved school governor and local figure who died in January this year.

Like many other people, Joe wasn't a native of Pitsmoor but had made it his home for many years. He was born in County Kilkenny in Ireland in 1940 and moved to Sheffield in search of work when he was 17. At first he lodged in Shiregreen but once he got married to Eileen (also Irish: they met dancing at the City Hall), they bought a house on Rutland Road, raising a family of three boys and playing an active role in the local community. He worked first in a steel mill and then as a bus driver, and despite 48 years in Sheffield he still had a soft Irish accent.

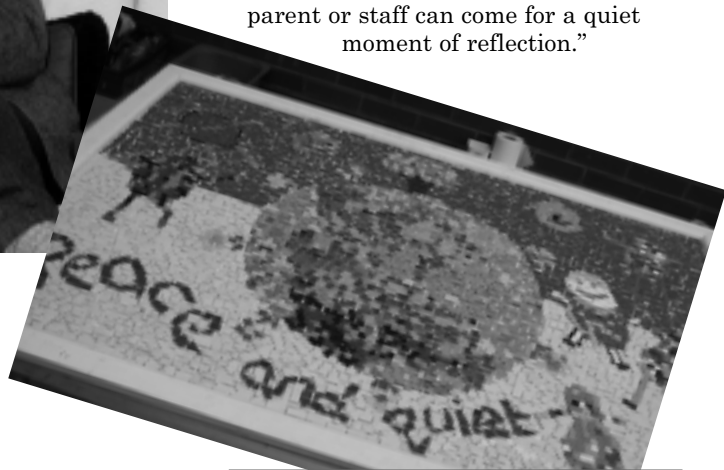
"What made him so special?" was the question I put to his nieces, Geraldine and Margaret, when I met them at St Catherine's to find out about plans for the garden. "He was a really caring, inspirational person!" said Margaret, "But down to earth and straightforward too. He was very approachable – all the kids at St Catherine's knew him and he would always find time to listen. Everyone called him Uncle Joe. For sixteen years he was a governor at the school and deeply committed to looking after everyone there."

"He was very active in the church too," added Geraldine. "His faith was very important to him and over the years he organised and fundraised for hundreds of disabled people to travel to Lourdes. And he would come to church every week just to get to know people and make them feel at home. But at the same time he loved a party and his family gatherings were legendary: even after he was diagnosed with a brain tumour, he held a party at home. All the relatives from Ireland came over for the occasion and Joe joined in the fun from his bed. He accepted death gracefully, saying he had had a good life, having seen his children grow up and give him grandchildren."

Aside from his faith and his family, the other great love of his life was gardening. So it seemed a fitting way to celebrate his life by building the garden at St Catherine's school, a place he



had given so much of his time. "After he died, we decided to raise some money for Joe's garden," Geraldine told me. "We've made the mosaic to honour him. We'll plant some new flowers and we'll also have a small fountain in the courtyard – and maybe even a stained glass door into the courtyard, if we have enough money. It's going to be a place where anyone, pupil, parent or staff can come for a quiet moment of reflection."



A ceremony to celebrate Joe's life will be held in the school on 19th January 2006.

"We'll have a grand opening of the garden with Eileen turning on the water fountain!" said Margaret. Anyone wanting to attend please contact the school.

Thanks to Margaret Lonsdale and Geraldine Flynn for talking to me about their uncle, Joe Butler – a very special person.

by Nikky Wilson

Burngreave Voices: Our Stories Celebrated

Would you like to learn the skills needed to interview people professionally and earn some money by recording interviews?

**Come along to a
one-day training course:**

'An Introduction to Oral History Interviewing'

**Thursday 19th January
9.30am–4.30pm**

At Burngreave Library, Spital Hill

Free to all Burngreave residents

For more information please contact **Nikky Wilson** on **276 1900** or call into Burngreave Library.

Burngreave Voices: Our Stories Celebrated is a Sheffield Galleries & Museums Trust project in partnership with Sheffield Libraries, WEA and Sheffield College, and is supported by Sheffield City Council and BNDfC.

Burngreave Ramblers



Interested in walking? The Ramblers are a small friendly group who welcome new members on any of their walks.

All walks... leave from Abbeyfield Park Gates, Abbeyfield Road at 10.45am, returning about 3.30pm

...are moderately easy, 5–7 miles, usually in the Peak District

...are FREE! Just wear suitable gear, bring packed lunch and drink

Next walks... Sat: 17th Dec & 14th Jan • Wed: 28th Dec & 28th Jan

Still interested?

Phone David (242 3870) or Jill (243 8867) for more info.



Dear *Messenger*

Can you explain to me why there was no mention of the BCAF AGM on the 21st October in this issue of the *Messenger*? If this publication is indeed a 'Messenger' for the people of Burngreave, then surely it should have mentioned the Burngreave Forum, which is composed of, and is for, the residents of Burngreave.

If you are interested, it was a very good meeting. The theme of the AGM was the effect of the London bombings on our community. The attendants broke off into smaller discussion groups and gave their thoughts on the events, and gave suggestions on what we can be doing as a community to ensure that racial equality isn't compromised.

I hope in future that you will take more of an interest in what the Forum is doing in Burngreave, and report this to the community.

Yours sincerely, Rebecca Cram

We didn't cover the BCAF AGM because we didn't have a volunteer who could attend and write the report. If anyone would like to report on future BCAF meetings, please get in touch. – ed

Dear *Messenger*

I am writing as an Outreach Needle Exchange Worker for Turning Point in response to 'Wardens at the Sharp End' in the November issue. I particularly want to respond to the quote, "We definitely need a drugs project to come in [to Burngreave] and offer needle exchange and health advice".

Sharp Action is a mobile Needle Exchange working as part of the Turning Point service Rockingham Drug Project to provide drug users with health advice, clean equipment, a means to dispose of used equipment, and referral into other drug services in their locality. Posters advertising the service can be found in the Information Shop, in the Citizens' Advice Bureau, the Wicker chemist or the Burngreave Drug Project.

Since 30th October the mobile needle exchange service has been visiting Burngreave once a week parking close to Denholme woods, within walking distance of the railway arch at the bottom of Brunswick Road, both areas highlighted by the report as being the worst for needle littering in Burngreave.

We have also worked with Burngreave Drug Project to provide free Drug Awareness and Sharp Handling training sessions to the Burngreave Wardens featured in the report, addressing some of the issues they face when working to clear the sites you mention.

Our primary concern is safety, that of the individual and the community. As a group of agencies working together we are committed to addressing all aspects of drug use in Burngreave.

Emilie Taylor, Turning Point, Rockingham Drug Project

Dear *Messenger*

Thank you for raising awareness of the problem of needle litter in Burngreave. I have spoken to the Burngreave Drugs Project (BDP) and the Wardens' manager to suggest a 'needles protocol' is drawn up, so that the Wardens provide information about numbers of needles found by location, so that BDP can request the Sharp Action team to work effectively in the area.

The majority of drug users in Burngreave are not injecting heroin but are users of khat, crack, cannabis and alcohol. People often

think the only treatment available for heroin users is a methadone script or rehab and are often unaware of how they can be helped. The Burngreave Drug Project can help residents access complementary therapies including ear acupuncture, shiatsu and Indian head massage and support residents to access structured drug and alcohol counselling and other support services. Most importantly this project can work with people who may not be ready to think about stopping or reducing their drug use and help them use drugs or alcohol as safely as possible.

Those people injecting drugs may need help to look after their own health. They can get free Hepatitis A and B immunisation as well as testing for HIV and Hepatitis C through Rockingham Drug Project in the city centre, where they can also get advice and support from drugs workers and nurses on safer injecting and wound care. Free overdose training is also available through the Safer Communities Partnership to families and friends of drug users and to users themselves.

We are all committed to reducing harm from substance misuse and work closely together.

Best wishes Magda Boo, Safer Communities Partnership
Substance Misuse Section (formerly the Drug Action Team)

Rt Hon Charles Clark MP, copied to the *Messenger*.

Dear Home Secretary

As three local Labour Councillors for the Burngreave Ward on Sheffield City Council we are concerned about the plight of the many refugee and asylum seekers who have made their home in our community. At present though we are particularly concerned about the Iraqi Kurds who do not have 'leave to remain' and who have had letters informing them that they will, in the near future, be returned to Iraq. We are deeply perturbed about the return to Iraq, at the moment, of these Kurdish asylum seekers, as we believe the situation in Iraq is unsafe.

Although we understand there is a need to have a system to assess all those individuals who seek asylum in this country and, if those people do not gain refugee status that they will have to return to their country of origin. We feel that the withdrawal of accommodation and vouchers to those Iraqi asylum seekers who have signed the Section 4 forms, will only drive these unfortunate people underground into the 'black economy' and to earning money through illegal means.

Indeed, we have heard of incidences where Iraqi Kurds in our Ward are being paid just £1 an hour, working over 15 hours a day for unscrupulous people exploiting their need to have money to be able to buy food to live on. This is surely wrong.

We would ask you please to rethink this policy, and stop returning people to Iraq at this present time. Also please reconsider the withdrawal of accommodation and voucher rights and also consider the possibility of asylum seekers working whilst waiting to hear if they have 'leave to remain' granted. The majority of asylum seekers, from whatever background living in our community, don't want handouts but want to work legitimately. They want to give something back to the country that has helped them at their time of desperate need.

Many thanks, we look forward to hearing your response.

Jackie Drayton, Steve Jones and Ibrar Hussain

BURNGREAVE BUILDING Co.



New Deal Contracts Undertaken

33 Melrose Road, Burngreave, Sheffield S3 9DN

email: burngreavebuilding@hotmail.com

www.burngreavebuilding.co.uk

FREE ESTIMATES - FREEPHONE:

0800 083 0669

0114 275 1281

Mob: 07977 96 41 42



SIGNPOST GARAGE

Class 4, 5 & 7 MOTs

Up to 16-Seater Minibuses Tested

Auto Electrics, Petrol & Diesel Engine Management

ABS, Air Bags, Air Conditioning Service, Key Coding

General Electronic Control Module Diagnostics

Smart Diagnostics for Peak Performance

Proprietor: Javed MIRTE, MSOE, MIMI, CAE, LCGI

Tel: (0114) 272 9216

www.signpostgarage.co.uk

8a Kilton Hill, Sheffield S3 9EB



TREES FOR FREE!



Do you live in the Sheffield Burngreave area?

Have you got space in your garden for a tree

– a specimen tree, perhaps a fruit tree, a tree to keep in a container, a tree to celebrate your cultural background, a hedge instead of a fence?

If so, we are taking orders now for this season (November to March). We also provide information, support and advice on suitable species, planting, pruning and aftercare.

Please contact:

Tim Shortland at Sheffield City Council; Parks, Woodlands & Countryside; Meersbrook Park, Brook Road, Sheffield S8 9FL

tel: **0114 273 4190**

email: **tim.shortland@sheffield.gov.uk**

Improve your health and your environment!

Get out into the fresh air and get active by taking part in gardening and nature conservation activities in Burngreave's parks and green spaces. Sessions last between two and four hours and are free. Women Only sessions are available.

By taking part in the BTCV Green Gym you can improve your health and fitness, reduce the risk of coronary heart disease, make new friends and feel more positive about life. You can also make a real difference to your local environment.

For more information call BTCV on
0114 272 3591 or email s.hughes@bctv.org.uk



YOUR LOCAL ACCOUNTANTS

**Albert Winter
& Peter Dearden**

320 Petre Street, Sheffield S4 8LU

Telephone: 0114 261 1695

* SELF ASSESSMENT RETURNS *

* COMPANY, PARTNERSHIP & SOLE TRADER ACCOUNTS *

* BOOK-KEEPING * PAYROLL etc. *

We offer a full range of Accountancy Services

STRESS Solutions

Try the immediate
stress reliever:
back, shoulder and neck massage

Vouchers available
Be prepared for Christmas

Amanda J Wells BA (Hons), ITEC, IGPP
Qualified, Registered & Insured

Tel/Fax: 0114 273 0976

Mobile: 0779 110 6885

stressolutions@aol.com

**Announcing
the 'at home'
service**
Prices start
at £20



Winner of the
Burngreave Business
Awards 2005

Hot & Cold Sandwich Delivery Service And Buffet Service

Includes Sandwiches hot/cold
on a variety of Bread cakes

Baked potatoes with various fillings, Hot roasts
Desserts, Fruits, Drinks

Caribbean food also available
All Halal

For your service please contact

JB's Catering on
0786 210 5454 or 0798 186 4983
fax on 0700 580 6670



Are you a Private Tenant?

Problems with housing disrepair?

'Drop in session'

Free advice and help about repair and management
Come and have your say!

Every Wednesday afternoon, 2-4pm, BNDfC Shop, 131 Spital Hill

Burngreave Private Landlords can access

Advice • Access to the Responsible Landlord
Scheme and its range of benefits • 'Landlords for
Excellence' course at Sheffield Hallam University - FREE

For more information tel: 273 4642 or 273 5134

'Private Rented Project', Private Sector Housing,
3rd Floor, Howden House, Sheffield S1 2SH



Did you know...?

Burngreave Messenger



...that the Burngreave Messenger offers a full graphic design service to many local organisations and businesses?

We can design and produce:

- Brochures
- Leaflets
- Newsletters
- Flyers and posters
- Press adverts
- Magazines
- Exhibitions and display panels
- Packaging and labelling

We offer very competitive rates and are keen to support local groups as well as city-wide organisations.

Our Portfolio

We have designed and developed:

City Talk - the newsletter for Sheffield City Centre. 9,000 copies are distributed quarterly to all businesses and residential apartments in the City Centre.

Burngreave Business Directory - A directory that lists the majority of businesses and services offered in Burngreave.

Firs Hill School Prospectus - A prospectus that celebrates the success and rich diversity of local school Firs Hill.

Pension Credit Campaign - Posters and leaflets encouraging pension credit take up in the Burngreave area.



If you would like to talk to us about promoting your business or organisation, please contact Naheem Hanif, Business Manager at the *Messenger* on 242 0564 or email messenger@burngreave.net



Our portfolio can be viewed on our website at:

www.burngreavemessenger.org.uk/

Are you strong enough? Specialist carers needed



Community Placements Sheffield, run by the children's charity NCH, is working in partnership with the Sheffield Council to provide specialist foster placements for young people, aged 8-17 years, with complex and difficult life histories.

We need carers with employment-based or voluntary experience working with young people with challenging behaviour, but they do not necessarily need previous experience of fostering.

Each carer receives

A fee of up to £485pw plus a fostering allowance of up to £180pw • 24-hour support
Regular support visits comprehensive training opportunities
Up to 4 weeks paid respite and retainer fee • Generous tax allowances

Interested?

Call 0114 229 4980 or email necpsheffield@nch.org.uk



Wicker Pharmacy

OPEN LATE
every day of the year!

55-59 The Wicker, Sheffield

+ HAWKINS PHARMACY +

Your Community Pharmacy

**NHS & Private Dispensing
Prescription Collection & Delivery**

Tel: 275 49 20 For full details

149 BURNGREAVE ROAD

A2B MINIBUSES

**24 Hours 7 Days a Week
5-16 Seater Minibuses**

Airport Runs • Day Trips • Corporate Travel
Contract Work • Weddings • Nights Out • Hen & Stag Parties

Competitive Rates • Friendly Reliable Service

Tel: 0786 130 8750